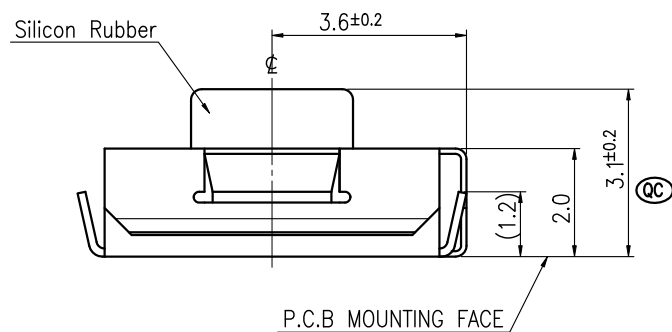
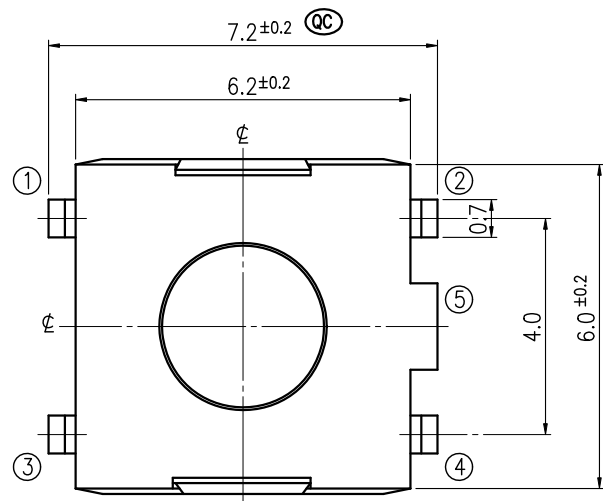
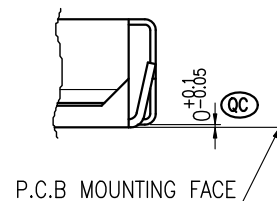


RoHS Compliant

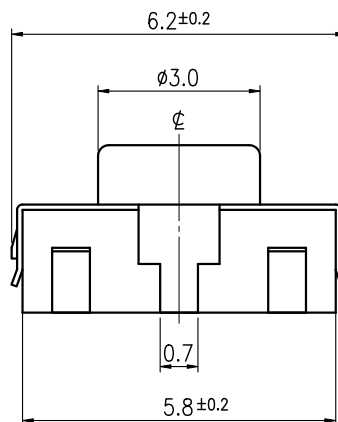
For Reference Only



MODEL NO.	STROKE	OPERATING FORCE	LIFE
ETC020-CA1J-F160TG	0.3±0.15	160±50gf	1,000,000
ETC020-CA1J-F260TG		260±50gf	500,000
ETC020-CA1J-F320TG	0.4±0.2	320±80gf	300,000
ETC020-CA1J-F520TG	0.5±0.2	520±130gf	200,000

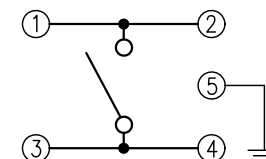


TERMINALS DETAIL

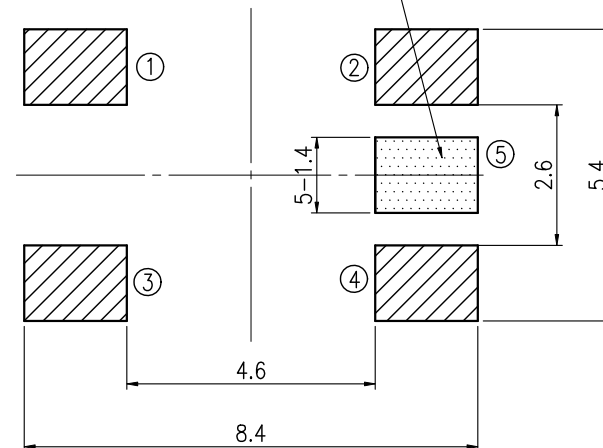


REVISIONS							
Rev	DESCRIPTION	DATE	DRAWER	Rev	DESCRIPTION	DATE	DRAWER
A	Initial Drawing	2011.08.08	Jane Shen	C			
B				D			
SPECIFICATIONS							
RATING		DC12V 50mA		TIMING			
CONTACT RESISTANCE		100mΩ MAX.		OPERATION (TORQUE)			
INSULATION RESISTANCE		DC500V – 100MΩ MIN.		STROKE (ANGLE)			
WITHSTAND VOLTAGE		AC250V – 1 MINUTE.		CONTACT RESISTANCE		2Ω MAX.	
REMARKS:				(AFTER		CYCLES LIFE TEST)	

SCHEMATIC



P.C.B. MOUNTING PLAN



HATCHED AREA SHOWS SOLDERING LAND

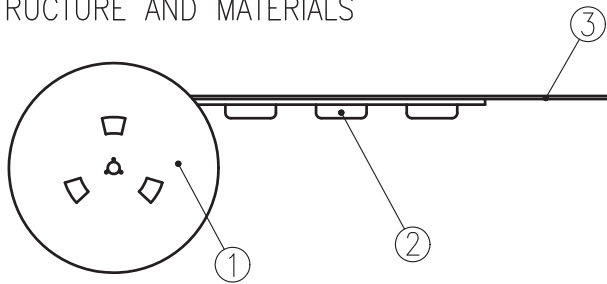
TOLERANCES UNLESS OTHERWISE SPECIFIED ±0.1		SIGNATURES		DATE	MODEL
		DRAWER	Jane Shen	2011.08.08	TITLE
		CHECKED			TACT SWITCH
		REVIEWED			NO.
		APPROVALS			See Model No.

TAIWAN MISAKI ELECTRONICS CO., LTD.

THE PACKING SPECIFICATIONS

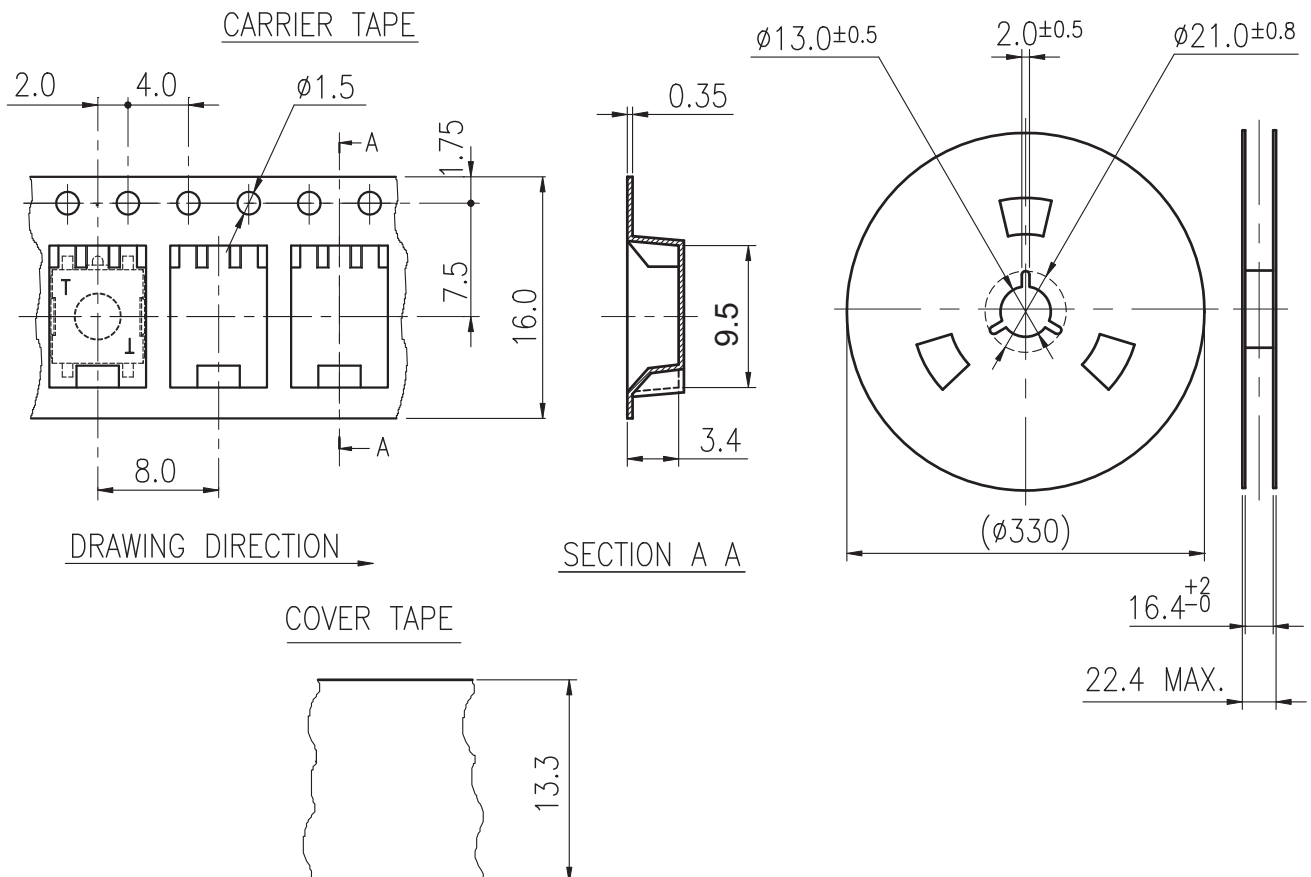
RoHS Compliance

1.STRUCTURE AND MATERIALS



③	COVER TAPE	POLYESTER
②	CARRIER TAPE	POLYSTYRENE
①	REEL	POLYSTYRENE
NO.	PARTS NAME	MATERIALS

- PACKAGING QUANTITY : 2,200 PCS/REEL
- MORE THAN 10 EMPTY POCKETS SHOULD BE REMAINED AT BOTH ENDS OF THE CARRIER TAPE FOR EACH REEL.
- SHORTAGE LESS THAN 10 PCS A REEL IS ACCETABLE BUT MORE THAN 3 RUNNING POCKETS SHORTAGE IS NOT ALLOWED.
- STRIPPING STRENGTH OF COVER TAPE IS BETWEEN 10 gf TO 70 gf AND STRIPPING ANGLE SHOULD BE WITHIN 165° ~ 180°.
- THE PRODUCT IN THE POCKET OF CARRIER TAPE SHOULD BE PLACED IN A SPECIFIED CORRECT POSITION.
- TAPE AND REEL PER EIA-481.
- DIMENSIONS :



				APPROVED BY	REVIEWED BY	CHECKED BY	DESIGNED BY	MODEL NO.
				<i>Fred Chen</i>	<i>Ken Lin</i>	<i>Max Chen</i>	<i>Jane Shen</i>	NTC020- CA1J -F__TG
				2009-07-20	2009.07.20	2009.07.20	2009.05.07	PAGINATE.
								1/1
								SPEC NO.
								P-542
SYM	DISCRIPTION	DATE	APPROVED					

TAIWAN MISAKI ELECTRONICS CO.,LTD.