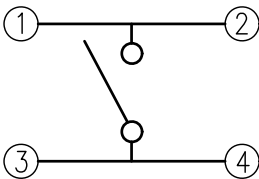


RoHS Compliant

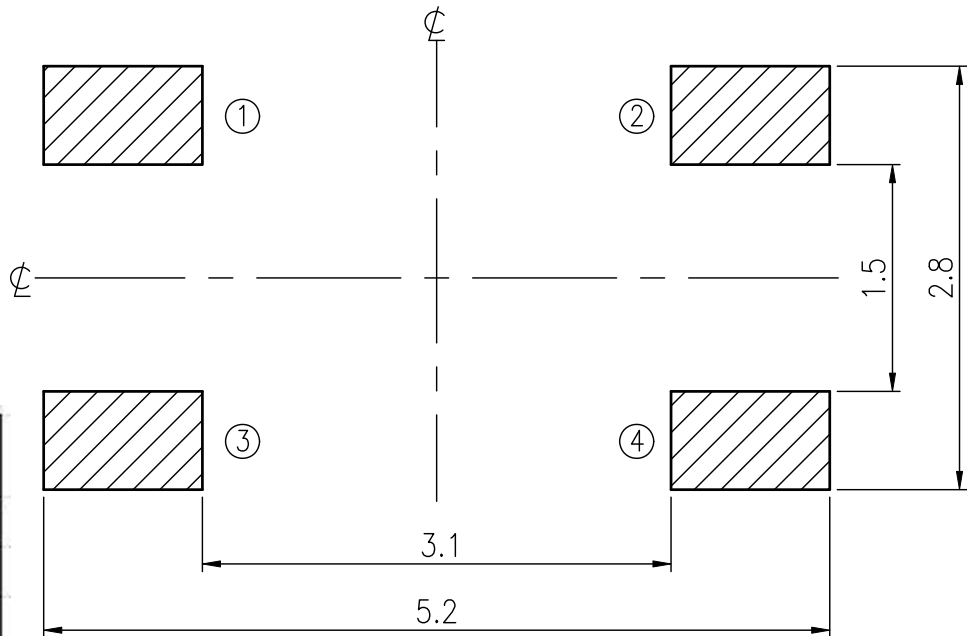
For Reference Only

REVISIONS							
Rev	DESCRIPTION	DATE	DRAWER	Rev	DESCRIPTION	DATE	DRAWER
A	Initial Drawing	2024.05.20	Jane Shen	C			
B				D			
SPECIFICATIONS							
RATING		DC16V 50mA		TIMING			
CONTACT RESISTANCE		500mΩ MAX.		OPERATION (TORQUE)			
INSULATION RESISTANCE		DC500V - 100MΩ MIN.		STROKE (ANGLE)		0.2±0.1 mm	
WITHSTAND VOLTAGE		AC250V - 1 MINUTE.		LIFE		CYCLES	
REMARKS:							

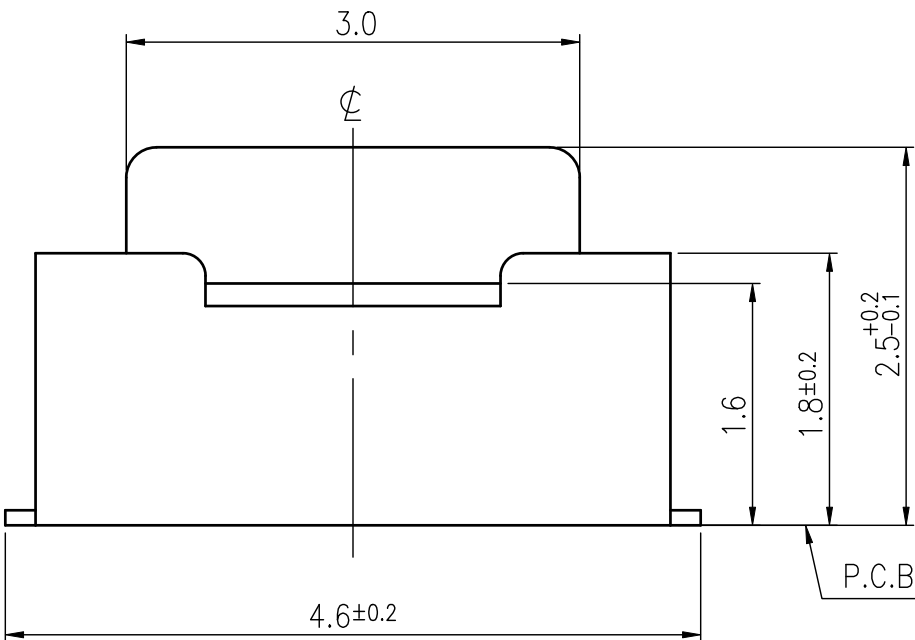
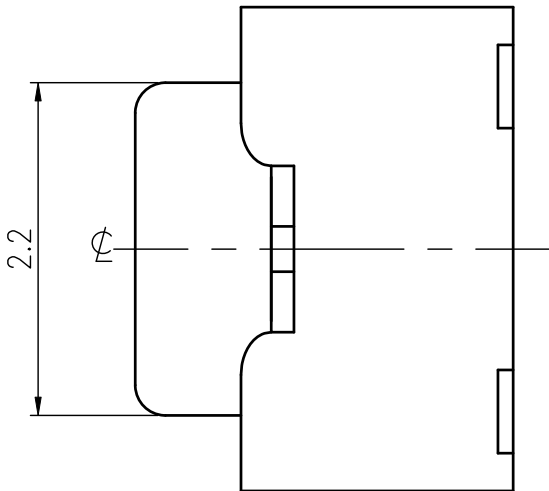
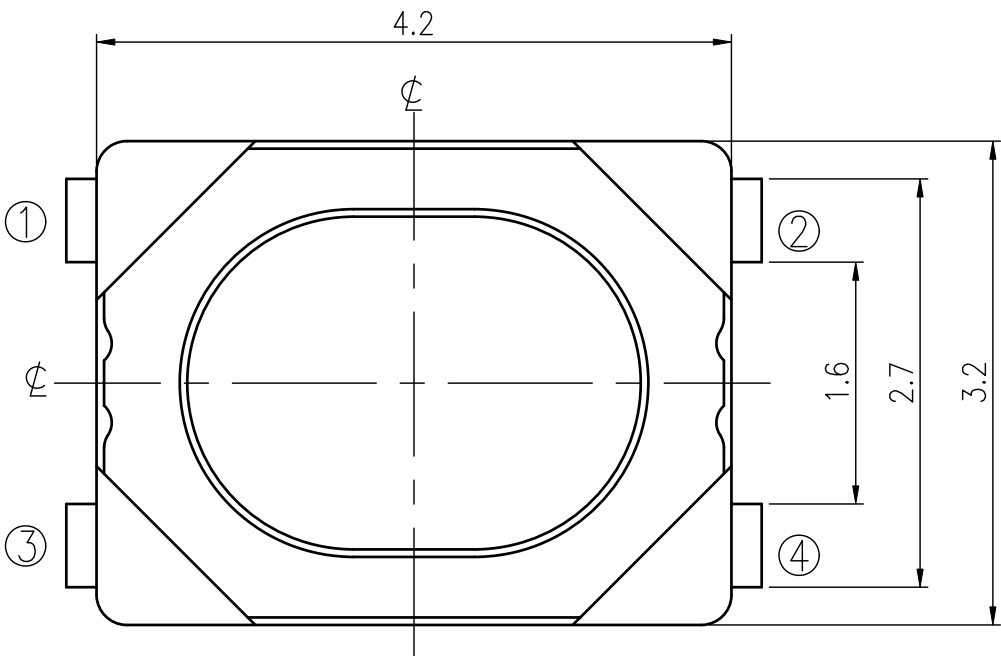
SCHEMATIC



P.C.B LAYOUT



HATCHED AREA SHOWS SOLDERING LAND



MODEL NO.	OPERATING FORCE	LIFE
ETC013-K-A16001	160±50gf	100,000
ETC013-K-A26001	260±70gf	50,000
ETC013-K-A40001	400±100gf	100,000

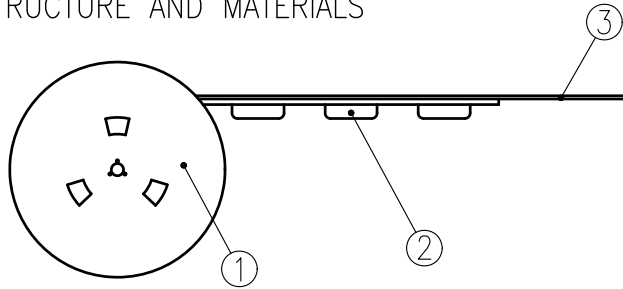
TOLERANCES UNLESS OTHERWISE SPECIFIED ±0.1			SIGNATURES	DATE	MODEL
			DRAWER Jane Shen	2024.05.20	TACT SWITCH
			CHECKED		
			REVIEWED		NO. SEE MODEL NO.
			APPROVALS Quyyuan Chuang	2024.05.20	

TAIWAN MISAKI ELECTRONICS CO., LTD.

THE PACKING SPECIFICATIONS

RoHS Compliant

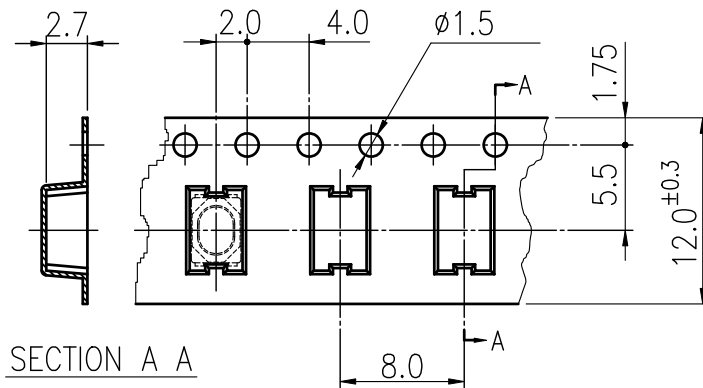
1.STRUCTURE AND MATERIALS



③	COVER TAPE	POLYESTER
②	CARRIER TAPE	POLYSTYRENE
①	REEL	POLYSTYRENE
NO.	PARTS NAME	MATERIALS

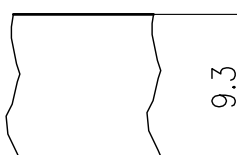
- PACKAGING QUANTITY : 2,900 PCS/REEL
- MORE THAN 10 EMPTY POCKETS SHOULD BE REMAINED AT BOTH ENDS OF THE CARRIER TAPE FOR EACH REEL.
- SHORTAGE LESS THAN 10 PCS A REEL IS ACCETABLE BUT MORE THAN 3 RUNNING POCKETS SHORTAGE IS NOT ALLOWED.
- STRIPPING STRENGTH OF COVER TAPE IS BETWEEN 10 gf TO 130 gf AND STRIPPING ANGLE SHOULD BE WITHIN 165° ~ 180°.
- THE PRODUCT IN THE POCKET OF CARRIER TAPE SHOULD BE PLACED IN A SPECIFIED CORRECT POSITION.
- TAPE AND REEL PER EIA-481.
- DIMENSIONS :

CARRIER TAPE

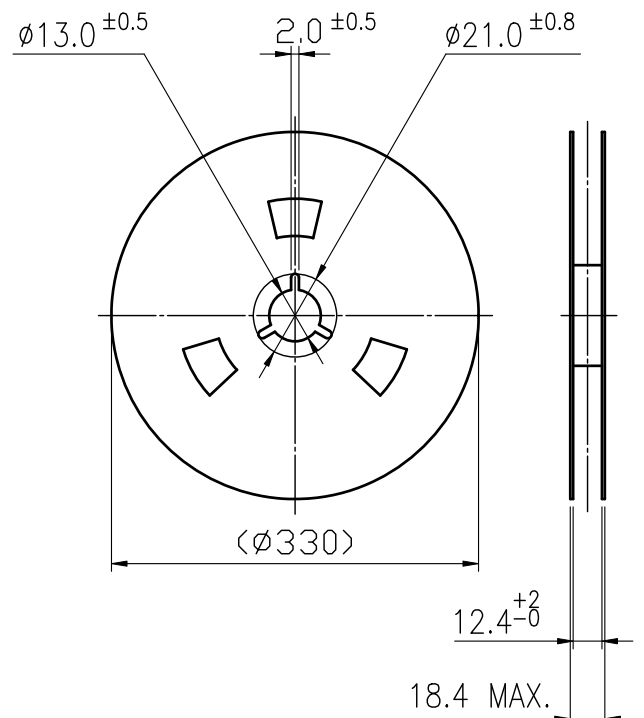


DRAWING DIRECTION

COVER TAPE



REEL



				APPROVED BY	REVIEWED BY	CHECKED BY	DESIGNED BY	MODEL NO.
				Qiuyuan Chuang			Jane Shen	NTC_013-K-
								PAGINATE.
								1/1
								SPEC NO.
								P-433
SYM	DISCRIPTION	DATE	APPROVED					