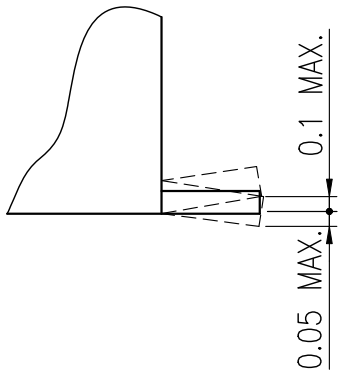
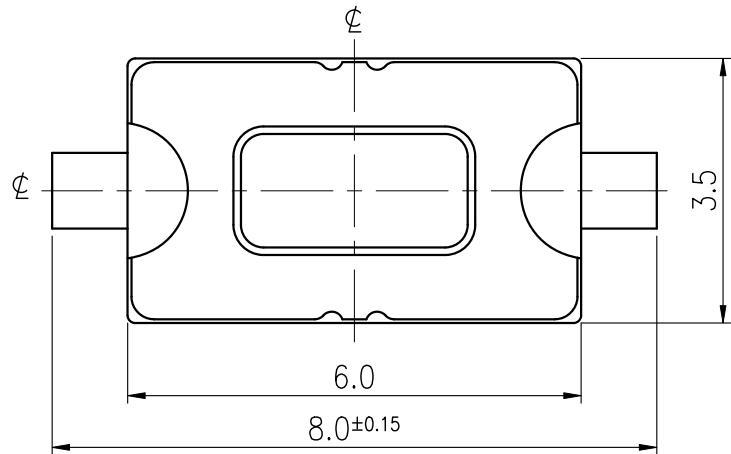
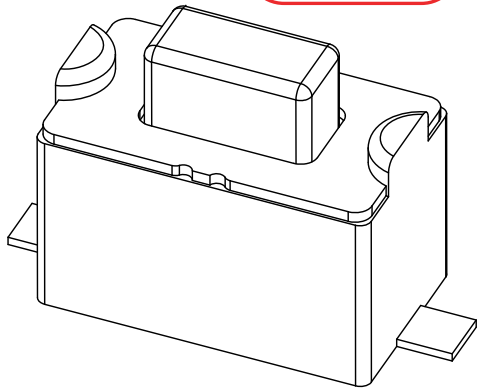


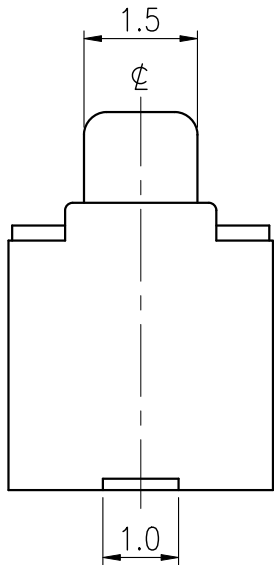
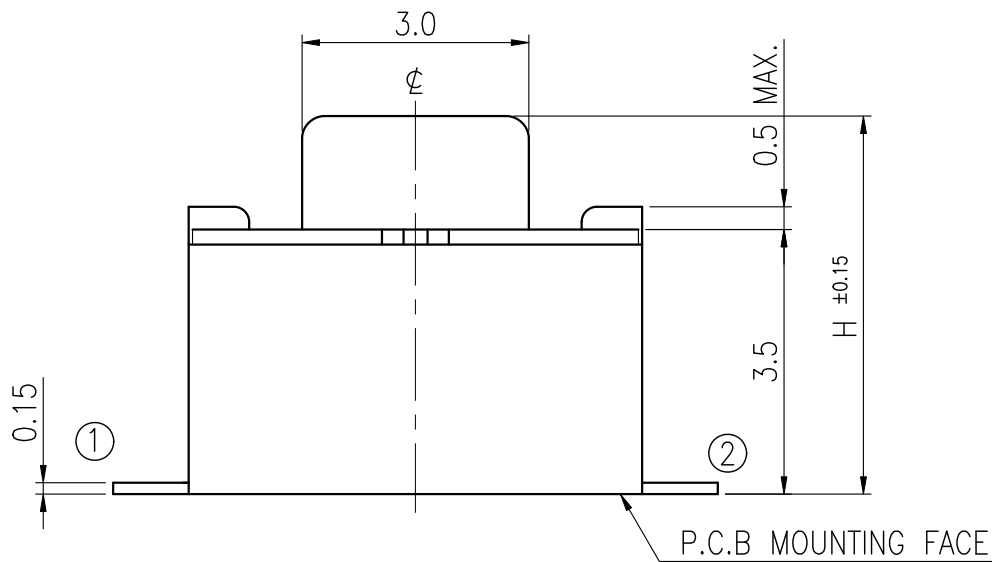
RoHS Compliant

T-MEC  
TAIWAN MISAKI ELECTRONICS CO., LTD.  
ISSUED  
2012.11.21  
RD DCC

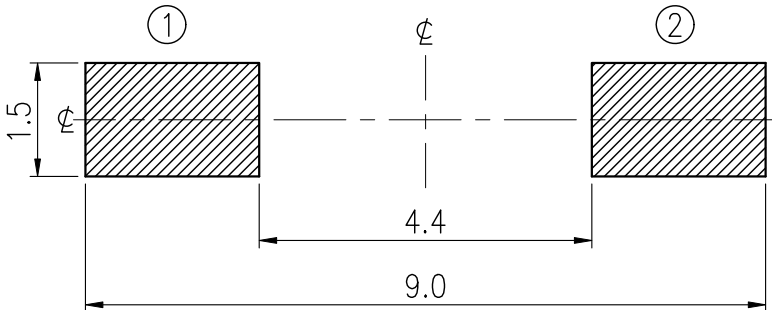


TERMINAL DETAIL (20/1)

SCHEMATIC



P.C.B LAYOUT



MODEL NO.	OPERATING	H	LIFE
ETC003-CC1G-A160T	160±50gf	4.3	50,000
ETC003-CC1G-B160T		5.0	
ETC003-CC1G-A260T	260±70gf	4.3	30,000
ETC003-CC1G-B260T		5.0	
ETC003-CC1G-A360T	360±90gf	4.3	50,000
ETC003-CC1G-B360T		5.0	

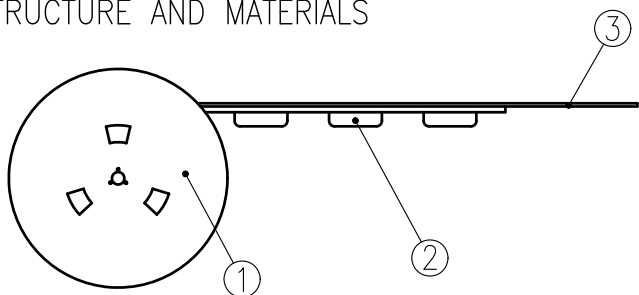
TOLERANCES UNLESS OTHERWISE SPECIFIED ±0.1			SIGNATURES		DATE	MODEL	
			DRAWER	Catherine Lee	2012.11.09	TITLE	TACT SWITCH
			CHECKED				
	UNIT mm	SCALE 10/1	REVIEWED			NO.	SEE MODEL NO.
			APPROVALS Dennis Hung		2012.11.09		

TAIWAN MISAKI ELECTRONICS CO., LTD.

# THE PACKING SPECIFICATIONS

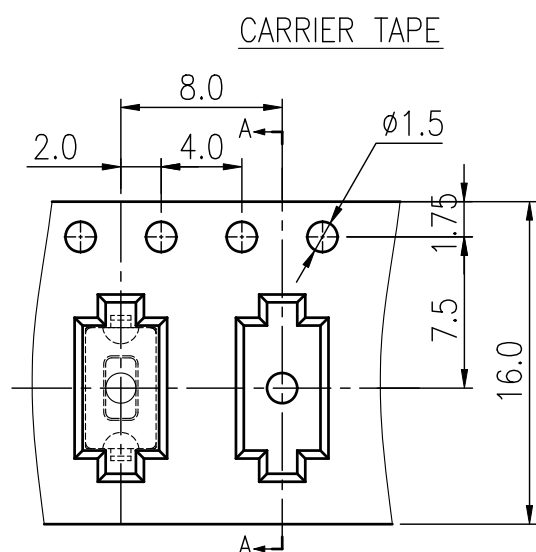
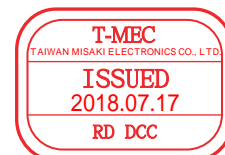
RoHS Compliant

## 1. STRUCTURE AND MATERIALS



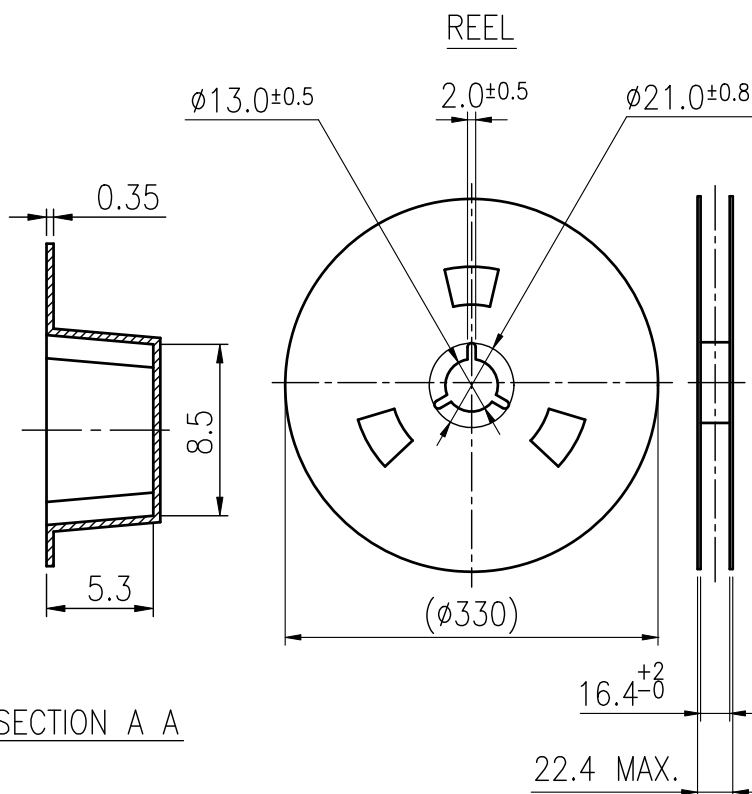
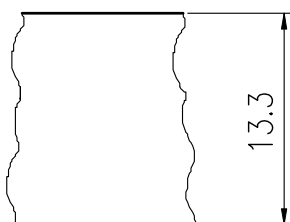
③	COVER TAPE	POLYESTER
②	CARRIER TAPE	POLYSTYRENE
①	REEL	POLYSTYRENE
NO.	PARTS NAME	MATERIALS

- PACKAGING QUANTITY : 1,500 PCS/REEL
- MORE THAN 10 EMPTY POCKETS SHOULD BE REMAINED AT BOTH ENDS OF THE CARRIER TAPE FOR EACH REEL.
- SHORTAGE LESS THAN 10 PCS A REEL IS ACCEPTABLE BUT MORE THAN 3 RUNNING POCKETS SHORTAGE IS NOT ALLOWED.
- STRIPPING STRENGTH OF COVER TAPE IS BETWEEN 10 gf TO 130 gf AND STRIPPING ANGLE SHOULD BE WITHIN  $165^{\circ} \sim 180^{\circ}$ .
- THE PRODUCT IN THE POCKET OF CARRIER TAPE SHOULD BE PLACED IN A SPECIFIED CORRECT POSITION.
- TAPE AND REEL PER EIA-481
- DIMENSIONS :



DRAWING DIRECTION

COVER TAPE



SECTION A A

				APPROVED BY	REVIEWED BY	CHECKED BY	DESIGNED BY	MODEL NO.
							Jane Shen	NTC003-C -B
							2018	PAGINATE. 1/1
								SPEC NO. P-584
SYM	DISCRIPTION	DATE	APPROVED					

TAIWAN MISAKI ELECTRONICS CO.,LTD.