

专业连接器制造商  
Professional Manufacturer of Connectors



**DOSiN**<sup>TM</sup>  
---RF CONNECTOR

01011010110111011010101001101001001010100110001111111101110010110101010

PROFESSIONAL SHAPING ACHIEVEMENTS  
SUCCESS DEPENDS ON QUALITY



源头工厂，专业制造，货通南北，服务东西

**胡开兴** Kaixing Hu  
业务经理

18518765758 (微信同号)

kaikai@dosin.cn

1102292886

www.dosinconn.cn | www.china-guan.com

江门市新会区大泽镇深江产业园大泽园区万洋众创城5栋  
东莞市虎门镇南栅民昌路3号永福科创中心园1栋8楼

**dosinconn**  
CONNECTOR & CABLE ASSEMBLY



江门市德索**连接器**有限公司  
东莞市德索五金电子有限公司

**Dosin Industrial (HK) co.,Ltd.**

Add:Rooms 1318-20,Hollyuood Plaza,610,Nathan Road,  
Mongkok,Kowloon,HK

Tel: 18518765758 QQ: 1102292886

**Dongguan Dosin Hardware Electronics Co.,Ltd.**

Add:No.19 Jingfu Road, Xiabian Village,Chang'an Town,  
Dongguan, China

Tel:18518765758

**HuBei Dosin Hardware Electronics Co.,Ltd (Plant)**

Add:NO. 358 QiChun Road Qichun County HuangGang City  
Hubei Province

E-mail: kaikai@ dosin.cn

http://www.dosinconn.cn



■ HD-SDI VIDEO

■ SSD CAMERA

■ 1080P

■ WIRELESS AP

■ CATV

■ ANTENNA

**德昕实业(香港)有限公司**  
**东莞市德索五金电子有限公司**  
Dongguan Dosin Hardware Electronics Co.,Ltd.





## COMPANY INTRODUCTION

Dongguan Dosin Hardware Electronics Co., Ltd. was established in 2005, and specializes in design, development and manufacturing of RF Coaxial Connectors (BNC, MINIBNC, F Type, SMA, SMB, SMC, N Type, TNC, RP-TNC, SMP, Mini-SMP, MCX, MMCX, 7/16DIN, L9, CC4 ... ..), RF cable assemblies, RF adapters, antenna series, Fiber optical cable assemblies and other custom made connectors. We offer an extensive range of interconnect solutions for applications in telecom, security surveillance, automotive, healthcare, military and aerospace industries.

Our company covers more than 3000 square meters, with well-equipped workshop, automatic production lines, and hundreds of employers. Since our establishment, our products and services have received a good reputation home and abroad. So far, we have built business relations in many countries, 70% products being sold to all over the world.

Our company adheres the business philosophy of "hardworking, pragmatic, innovation, excellence" and values "trust, quality, service, Thanksgiving" to make constant effort to perfect our products. The company is ISO9001 certificated, and all products are RoHS, REACH compliant.

If you are interested in our company or our products, please contact us. We will be here to respond to you the first around. We promise you the top-quality and the most cost-effective products and services. Looking forward to cooperate with you!

- Specialty
- Innovation
- Quality
- Service

PROFESSIONAL SHAPING ACHIEVEMENTS  
SUCCESS DEPENDS ON QUALITY

Dongguan Dosin Hardware Electronics Co., Ltd.

# PRODUCT CONTENTS

PRODUCTION EQUIPMENT .....	03
TESTING EQUIPMENT .....	04
BNC CONNECTORS .....	05-10
F CONNECTORS .....	11/14
SMA/SMB CONNECTORS .....	15/19
MCX CONNECTORS .....	20
TNC CONNECTORS .....	21/22
N CONNECTORS .....	23/24
UHF CONNECTORS .....	25
DIN CONNECTORS .....	26
ADAPTER SERIES .....	27/29
RJ45 SERIES .....	30
CABLE SERIES .....	31/32
ANTENNA SERIES .....	33
CABLE REFERENCE TABLE .....	34





Automated stamping workshop



Stamping Workshop



Die-casting workshop



Injection workshop



Assembly workshop



Assembly workshop



Projector



Network Analyzer



Resistance to pressure tester



Pulling force testing machine



Quadratic elements



Scaling machine



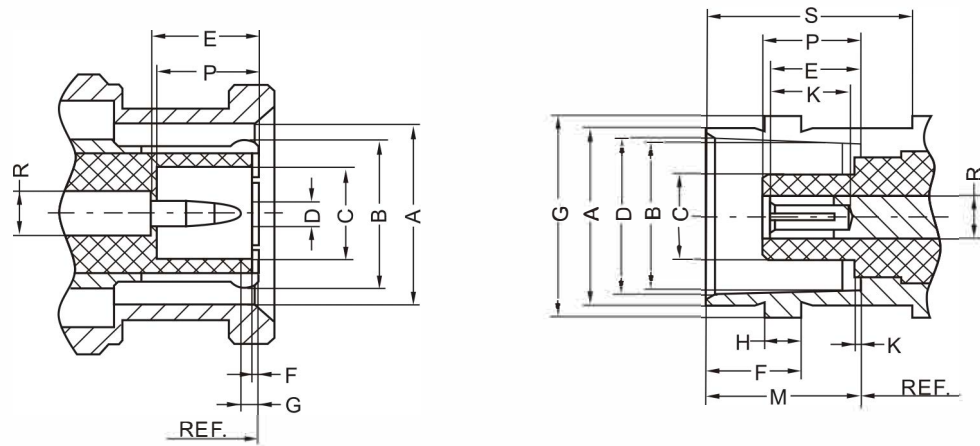
Salt spray machine



## BNC CONNECTORS

The Bayonet-Neil-Concealment, or BNC connector derives its name from the surnames of the type N inventor Paul Neil and type C inventor Carl Concealment- the "bayonet" refers to the style of locking mechanism employed by this series. Developed in the late 1940s, the BNC is basically a scaled down erosion of the Type C, and its compact design, easy quick connect/disconnect coupling and economical manufacturing cost have all helped to ensure that it is consistently applied in radio equipment and electron tube instrument field and join the coaxial cable of the radio frequency extensively.

The BNC series from Computer Electronics is available in both 50Ω versions that are optimized for use up to 4GHz and 75Ω versions for applications in the 2GHz range.



PLUG		
Letter	Millimeters	
	Minimum	Maximum
A	9.78	9.91
B	-	-
C	4.83	-
D	1.32	1.37
E	5.33	5.84
F	0.15	0.30
G	0.08	-
P	5.28	5.79
R	2.14nom.	

JACK		
Letter	Millimeters	
	Minimum	Maximum
A	9.60	9.70
B	8.10	8.15
C	-	4.72
D	8.31	8.46
E	4.72	5.23
F	5.18	5.28
G	10.97	11.07
H	1.91	2.06
K	-	0.15
L	4.95	-
M	8.31	8.51
P	4.78	5.28
R	2.14nom.	
S	10.52	-

## MAJOR TECHNICAL CHARACTERISTICS

Temperature Range	-55~+1550C(PECable-40~+85°C)	Insulation rrsistance	≥5000MΩ
Impedance	50Ω, 75Ω	Center conductor retention force	≤ 0.57N
Frequency Range	DC-4GHZ	Insertion Loss	≤ 0.20dB/3GHZ
Working Voltage	500V r.m.s at sea level	Voltage Standing Wave Ratio	≤ 1.22/3GHZ
Withstanding Voltage	1500V r.m.s at sea level	Straight	≤ 1.30/3GHZ
Contact resistance		Right angle	≤ 500 ( cycles )
Center Contact	≤ 1.5mΩ	Durability(mating)	
Outer Contact	≤ 1mΩ		

## APPLICABLE STANDARD

MIL-C-39012 ; CECC 22120 ; IEC 60169-8.

## DOSIN-801-0001

R/A BNC  
JACK.BLACK  
PLASTIC HOUSING



## DOSIN-801-0003

R/A BNC JACK PCB  
MOUNT. BLACK  
PLASTIC HOUSING



## DOSIN-801-0005

DOUBLE R/A BNC  
JACK PCB MOUNT



## DOSIN-801-0029

R/A TWO BNC(SWIT)  
FEMALE IN ONE ROW



## DOSIN-801-0007

R/A THREE BNC  
FEMALE IN ONE  
ROW. BLACK  
PLASTIC HOUSING



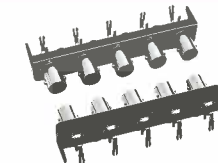
## DOSIN-801-0010

STRAIGHT FOUR BNC  
FEMALE IN ONE  
ROW. BLACK  
PLASTIC HOUSING



## DOSIN-801-0011

R/A FIVE BNC  
FEMALE IN ONE  
ROW. BLACK  
PLASTIC HOUSING



## DOSIN-801-0026

TWO BNC TO RCA JACK  
IN TWO ROWS



## DOSIN-801-0002

STRAIGHT BNC  
JACK.BLACK  
PLASTIC HOUSING



## DOSIN-801-0013

R/A TWO BNC  
(SWIT) FEMALE IN  
ONE ROW. BLACK  
PLASTIC HOUSING



## DOSIN-801-0025

BNC TO RCA JACK  
IN ONE ROW



## DOSIN-801-0169

DUAL BNC JACK FOR  
PCB 90 DEGREE



## DOSIN-801-0008

STRAIGHT THREE BNC  
FEMALE IN ONE  
ROW. BLACK  
PLASTIC HOUSING



## DOSIN-801-0009

R/A FOUR BNC  
FEMALE IN ONE  
ROW. BLACK  
PLASTIC HOUSING



## DOSIN-801-0014

FOUR BNC JACK  
IN TWO ROWS  
DEGREE : 90 / 180



## DOSIN-801-0016

R/A SIX BNC JACK  
IN TWO ROWS BLACK  
PLASTIC HOUSING





**DOSIN-801-0279**

FIVE PORT BNC JACK CONNECTORS FOR PCB MOUNT



**DOSIN-801-0028**

FOUR BNC TO RCA JACK IN TWO ROWS



**DOSIN-801-0056**

ZINC ALLOY BNC JACK RECEPTACLE. PCB MOUNT



**DOSIN-801-0062**

21.9MM BNC JACK RECEPTACLE. PCB MOUNT



**DOSIN-801-0066**

26.2MM BNC JACK RECEPTACLE. PCB MOUNT



**DOSIN-801-0070**

BNC JACK PCB MOUNT R/A



**DOSIN-801-0052**

MINI BNC JACK R/A PCB MOUNT



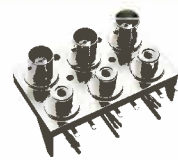
**DOSIN-801-0074**

ZINC ALLOY BNC JACK PCB EDGE MOUNT RECEPTACLE. ISOLATE



**DOSIN-801-0027**

THREE BNC TO RCA JACK IN TWO ROWS



**DOSIN-801-0018**

EIGHT BNC JACK IN TWO ROWS DEGREE : 90 / 180



**DOSIN-801-0058**

22MM MICRO-BNC JACK PCB



**DOSIN-801-0209**

STRAIGHT PANEL RECEPTACLE BNC JACK CONNECTOR



**DOSIN-801-0072**

R/A BNC JACK FOR PCB



**DOSIN-801-0122**

COPPER BNC JACK R/A PCB MOUNT



**DOSIN-801-0050**

BNC JACK R/A PCB MOUNT



**DOSIN-801-0076**

BNC DOUBLE JACK BULKHEAD



**DOSIN-801-0068**

STRAIGHT BNC JACK BULKHEAD PCB MOUNT



**DOSIN-801-0080**

29.5MM R/A PCB MOUNT BNC JACK



**DOSIN-801-0110**

90 DEGREE PCB BNC JACK



**DOSIN-801-0075**

GOLD PLATED EDGE MOUNT BNC JACK



**DOSIN-801-0228**

STRAIGHT PCB MOUNT BNC JACK



**DOSIN-801-0032**

STRAIGHT BNC JACK PCB MOUNT



**DOSIN-801-0090**

BNC JACK PCB MOUNT STRAIGHT



**DOSIN-801-0048**

STRAIGHT BLACK PLASTIC BNC JACK PCB MOUNT



**DOSIN-801-0078**

33.4MM R/A PCB MOUNT BNC JACK



**DOSIN-801-0225**

R/A BNC JACK FOR PCB MOUNT



**DOSIN-801-0133**

R/A EIGHT BNC JACK IN TWO ROWS



**DOSIN-801-0085**

BNC JACK BULKHEAD PANEL



**DOSIN-801-0030**

13.1MM R/A BNC JACK PCB MOUNT



**DOSIN-801-0034**

15.8MM R/A BNC JACK PCB MOUNT



**DOSIN-801-0092**

R/A BNC JACK PCB MOUNT



**DOSIN-801-0046**

RIGHT ANGLE BLACK PLASTIC BNC JACK PCB MOUNT





**DOSIN-801-0040**

STRAIGHT WHITE  
PLASTIC BNC  
JACK PCB MOUNT



**DOSIN-801-0093**

R/A WHITE PLASTIC  
DOUBLE IN ONE  
ROW.PCB MOUNT



**DOSIN-801-0098**

DOUBLE BNC JACK



**DOSIN-801-0141**

CLAMP TYPE BNC PLUG  
FOR CABLE Rg213 RG8



**DOSIN-801-0105**

BNC JACK BULKHEAD PANEL



**DOSIN-801-0149**

TWIST ON BNC PLUG



**DOSIN-801-0138**

BNC PLUG CRIMP  
CABLE:RG58/59



**DOSIN-801-0139**

SYV-75-3 BNC  
PLUG CONNECTOR



**DOSIN-801-0038**

RIGHT ANGLE  
WHITE PLASTIC BNC  
JACK PCB MOUNT



**DOSIN-801-0095**

R/A BLACK PLASTIC  
DOUBLE IN ONE  
ROW.PCB MOUNT



**DOSIN-801-0099**

STRAIGHT DOUBLE BNC  
JACK FOR PCB MOUNT



**DOSIN-801-0152**

WATERPROOF BNC  
JACK FOR  
CABLE Rg179 RG316



**DOSIN-801-0108**

BNC PLUG CRIMP  
CABLE:RG174/179



**DOSIN-801-0137**

BNC PLUG QUICK CRIMP  
CABLE:RG316



**DOSIN-801-0087**

COMPRESSION BNC  
PLUG FOR RG6 RG59



**DOSIN-801-0140**

SYV-75-5 BNC  
JACK CONNECTOR



**DOSIN-801-0230**

HD SDI RIGHT ANGLE  
DOUBLE BNC JACK PCB



**DOSIN-801-0266**

R/A DUAL PORT BNC  
JACK CONNECTOR  
FOR PCB MOUNT



**DOSIN-801-0212**

90 DEGREE SINGLE PORT  
BNC JACK



**DOSIN-801-0144**

75OHM R/A BNC JACK  
FOR PCB MOUNT



**DOSIN-801-0084**

HD SDI BNC JACK  
90 DEGREE PCB



**DOSIN-801-0142**

R/ABNC MALE  
CONNECTOR FOR  
CABLE Rg174 RG316



**DOSIN-801-0116**

BNC PLUG TWIST ON,  
SOLDERLESS, 75 OHM  
CABLE:RG59/RG6



**DOSIN-801-0277**

90 DEGREE BNC JACK  
FOR PCB MOUNT



**DOSIN-801-0341**

3G 4G BNC JACK  
CONNECTOR



**DOSIN-801-0115**

75OHM HD SDI BNC  
JACK CONNECTOR



**DOSIN-801-0262**

STRAIGHT BNC JACK  
FOR DVR



**DOSIN-801-0263**

HD SDI STRAIGHT  
DUAL PORT BNC JACK



**DOSIN-801-0251**

RIGHT ANGLE BNC  
JACK FOR PCB



**DOSIN-801-0244**

R/A BNC PLUG FOR PCB



**DOSIN-801-0150**

STRAIGHT BNC PLUG  
FOR PCB



**DOSIN-801-0143**

PCB R/A BNC JACK

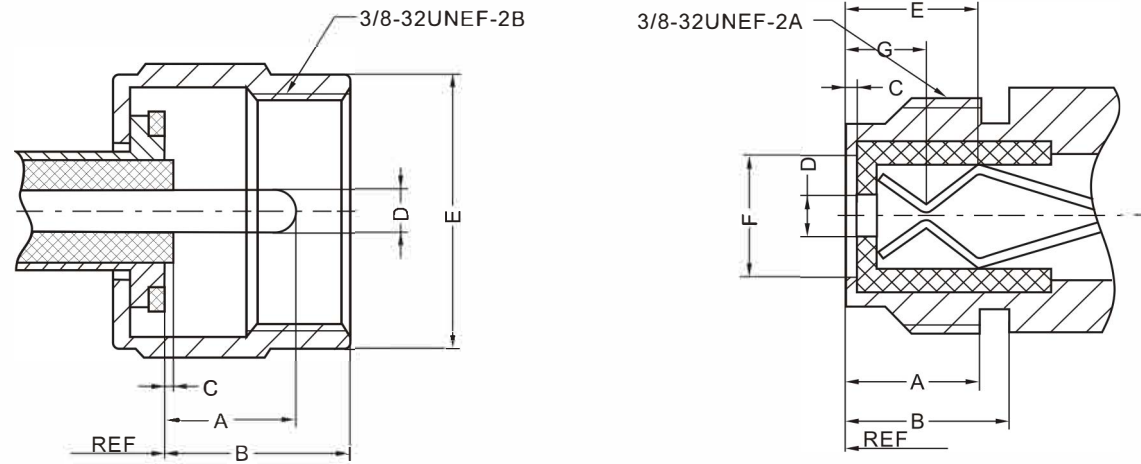




## F CONNECTORS

F type joining devices use for 75Ω cable assign system, especially CATV, broadcast television network, It can already be used for having impedance to mate the occasion required, can be used in not mating the occasion too. It is joined, inserts helping jointly that it's characteristic is whorl, the price is suitable.

F type joining devices can exchange and use with the similar products in the world. FL10 products are M10X0.75 whorl, the structure, performance are the same as F type.



PLUG		
Letter	Millimeters	
	Minimum	Maximum
A	4.95	6.86
B	-	7.29
C	-	0.25
D	0.51	1.63
E	-	12.95

JACK		
Letter	Millimeters	
	Minimum	Maximum
A	5.56	-
B	7.59	-
C	0.30	-
D	-	-
E	7.00	-
F	3.86	-
G	-	4.70

## MAJOR TECHNICAL CHARACTERISTICS

Temperature Range	-40~+60°C	Insulation resistance	≥ 1000MΩ
Vibration	100m/S <sup>2</sup> (10~500Hz), 10g	Center conductor retention force	≥ 0.2N
Impedance	75Ω	Voltage Standing Wave Ratio	≤ 1.20
Frequency Range	DC~1GHz	Straight	≤ 1.30
Working Voltage	170V r.m.s at sea level	Right angle	≥ 500 (cycles)
Withstanding Voltage	500V r.m.s at sea level	Durability(mating)	
Contact resistance			
Center Contact	≤ 10mΩ		
Outer Contact	≤ 5 mΩ		

## APPLICABLE STANDARD

IEC 60169-24

## DOSIN-803-0001

RF CONNECTOR F  
CONNECTOR RIGHT  
ANGLE PCB MOUNT JACK



## DOSIN-803-0003

HIGH PERFORMANCE  
F FEMALE CONNECTOR



## DOSIN-803-0005

RF CONNECTOR F  
CONNECTOR STRAIGHT  
PCB MOUNT JACK



## DOSIN-803-0008

SET-TOP CABLE BOXES  
F CONNECTOR



## DOSIN-803-0010

F CATV CONNECTOR



## DOSIN-803-0012

F FEMALE CONNECTOR  
FOR PCB 90 DEGREE



## DOSIN-803-0014

F FEMALE TO PAL  
MALE ADAPTER



## DOSIN-803-0016

F MALE CONNECTOR FOR  
CABLE



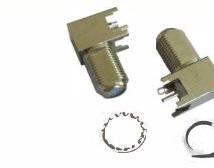
## DOSIN-803-0002

90 DEGREE F  
FEMALE CONNECTOR



## DOSIN-803-0201

RIGHT ANGLE PCB  
F JACK CONNECTOR



## DOSIN-803-0006

RIGHT ANGLE FEMALE  
F CONNECTOR



## DOSIN-803-0009

RF CONNECTOR JACK  
TO JACK F CONNECTOR



## DOSIN-803-0011

ZINC ALLOY 90 DEGREE  
F JACK CONNECTOR



## DOSIN-803-0131

EDGE MOUNT F  
FEMALE CONNECTOR



## DOSIN-803-0015

RG6 COMPRESSION  
F CONNECTOR



## DOSIN-803-0017

CRIMP WATERPROOF  
F CONNECTOR





**DOSIN-803-0018**

HIGH POWER F  
MALE CONNECTOR



**DOSIN-803-0185**

SOLDER TYPE F PLUG  
FOR SEMI-RIGID CABLE



**DOSIN-803-0022**

3C2V F MALE CONNECTOR



**DOSIN-803-0024**

RF CONNECTOR  
F CONNECTOR CRIMP  
PLUG FOR RG179



**DOSIN-803-0026**

MALE CRIMP WIRE  
F PLUG CONNECTOR



**DOSIN-803-0028**

F CONNECTOR RIGHT  
ANGLE CRIMP  
PLUG FOR RG179



**DOSIN-803-0030**

ROHS F CONNECTOR  
(F FEMALE BULKHEAD)



**DOSIN-803-0032**

GOLD-PLATED WIRE F  
FEMALE CONNECTOR



**DOSIN-803-0019**

AUTO CONNECTOR  
TERMINAL CRIMP



**DOSIN-803-0021**

GOLD-PLATING  
PLUG F CONNECTOR



**DOSIN-803-0023**

CRIMP TYPE F PLUG FOR  
CABLE Rg174 RG179



**DOSIN-803-0209**

F COMPRESSION  
MALE FOR RG6 Rg59



**DOSIN-803-0027**

F CONNECTOR CRIMP  
ON FOR COAXIAL CABLE



**DOSIN-803-0029**

SOLDER TYPE  
BULKHEAD F JACK



**DOSIN-803-0193**

BULKHEAD F FEMALE  
CONNECTOR



**DOSIN-803-0183**

STRAIGHT F FEMALE  
CONNECTOR FOR PCB



**DOSIN-803-0034**

COAXIAL F WIRE  
CONNECTORS TYPES



**DOSIN-803-0036**

RF COAXIAL  
WATERPROOF  
FEMALE F CONNECTOR



**DOSIN-803-0038**

STRAIGHT F  
FEMALE CONNECTOR



**DOSIN-803-0215**

STRAIGHT F MALE  
CONNECTOR FOR PCB



**DOSIN-803-0042**

F FEMALE RECEPTACLE



**DOSIN-803-0044**

BRASS COMPRESSION  
F PLUG FOR RG6



**DOSIN-803-0046**

R/A F FEMALE  
CONNECTOR



**DOSIN-803-0133**

STRAIGHT PCB F JACK  
CONNECTOR



**DOSIN-803-0194**

SOLDER F JACK  
CONNECTOR



**DOSIN-803-0037**

RF CRIMP TYPE F  
WIRE CONNECTORS



**DOSIN-803-0039**

180 DEGREE F  
CONNECTOR FOR  
COAXIAL CABLE



**DOSIN-803-0041**

AUTOMOTIVE FEMALE  
F WITH RG316  
COAXIAL CABLE



**DOSIN-803-0043**

75 OHM F JACK  
CONNECTOR



**DOSIN-803-0045**

QUICK F FEMALE RIGHT  
ANGLE CONNECTOR



**DOSIN-803-0047**

R/A F FEMALE FOR  
RG:174



**DOSIN-803-0130**

EDGE MOUNT F FEMALE  
CONNECTOR FOR PCB

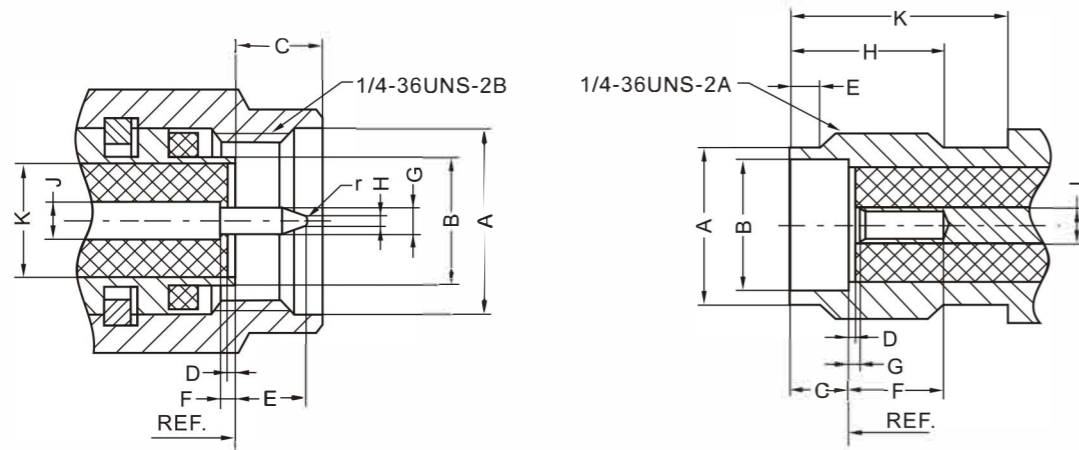




## SMA CONNECTORS

SMA connector is a type of RF connector developed in the 1960s to make it easier to coaxial cables. SMA's compact design, high durability and outstanding electronic performance have made it one of the most widely Used connectors in RF and Microwave applications across the board. Normally utilized in frequency ranges From DC-18GHz, there are also precision versions that can reach as high as 26.5GHz.

SMA connector is available both in Standard and Reverse Polarity, where the male and female interface is Witched. Regarding to extensive small scale coaxial which join whorl that has a reliable characteristic with long Life-span that the width, performances are excellent, high frequently. Suitable for the microwave equipment and body of the digital communication system and join in the cable for the micro strip line frequency in the loop Frequently.



PLUG		
Letter	Millimeters	
	Minimum	Maximum
A	6.35	-
B	4.53	4.59
C	2.56	3.43
D	0.00	0.18
E	1.91	2.56
F	0.00	0.25
G	0.90	0.94
H	0.00	0.38
J	1.25	1.30
K	4.10	4.13

JACK		
Letter	Millimeters	
	Minimum	Maximum
A	5.28	5.49
B	4.60	4.67
C	1.88	1.98
D	0.00	0.18
E	0.38	1.14
F	2.92	-
G	0.00	0.18
H	4.32	-
J	1.25	1.30
K	5.54	-

## MAJOR TECHNICAL CHARACTERISTICS

Temperature Range	-55~+155°C(PECable-40~+85°C)	Insulation resistance	≥5000MΩ
Vibration	100m/S <sup>2</sup> (10~2000Hz)	Center conductor retention force	≥ 0.28N
Impedance	50Ω	Coupling nut retention force	≥ 180N
Frequency Range	DC~12.4GHz(Semi-Rigled Cable DC-18GHz)	Insertion Loss	≤ 0.15dB/6GHz
Working Voltage	335V r.m.s at sea level	Voltage Standing Wave Ratio	
Withstanding Voltage	1000V r.m.s at sea level	Straight	≤ 1.10+0.02f
Contact resistance		Right angle	≤ 1.20+0.03f
Center Contact	≤ 3mΩ	Durability(mating)	≤500 ( cycles )
Outer Contact	≤ 2.5mΩ		

## APPLICABLE STANDARD

MIL-C-39012 ; CECC 22110 ; IEC 60169-15.

## DOSIN-806-0001

RIGHT ANGLE SMA JACK FOR PCB



## DOSIN-806-0003

90 DEGREE SMA JACK FOR PCB



## DOSIN-806-0005

SMA R/A FEMALE TO PCB CRIMP FOR CABLE



## DOSIN-806-0007

SMA BULKHEAD RECEPTACLE-JACK



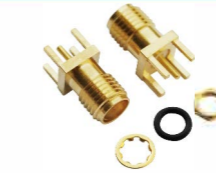
## DOSIN-806-0009

SMA PCB MOUNT JACK



## DOSIN-806-0011

SMA JACK STRAIGHT PCB RECEPTACLE



## DOSIN-806-0013

SMA PLUG R/A PCB RECEPTACLE



## DOSIN-806-0015

SMA JACK PANEL RECEPTACLE



## DOSIN-806-0002

90 DEGREE SMA PCB CONNECTOR



## DOSIN-806-0004

RIGHT ANGLE SMA PCB RECEPTACLE JACK



## DOSIN-806-0006

SOLDER TYPE SMA JACK FOR RG316



## DOSIN-806-0008

SMA JACK BULKHEAD CRIMP FOR CABLE RG174



## DOSIN-806-0010

EDGE MOUNT SMA JACK CONNECTOR



## DOSIN-806-0012

SMA JACK TO REVERSE SMA PLUG



## DOSIN-806-0014

90 DEGREE SMA FLANGE FEMALE CONNECTOR



## DOSIN-806-0016

SMA PLUG PANEL RECEPTACLE





**DOSIN-806-0017**

SMA FEMALE CHASSIS CRIMP



**DOSIN-806-0019**

SMA MALE TO DOUBLE FEMALE



**DOSIN-806-0021**

SMA CRIMP MALE CONNECTOR FORRG58



**DOSIN-806-0023**

SMA PLUG STRAIGHT PCB RECEPTACLE



**DOSIN-806-0025**

SMA JACK PANEL RECEPTACLE (4 HOLE)



**DOSIN-806-0027**

SMA PLUG PANEL RECEPTACLE



**DOSIN-806-0029**

SMA QUICKLY FIT ADAPTOR -PLUG TO JACK



**DOSIN-806-0031**

SMA JACK R/A CRIMP TYPE, 50 OHM



**DOSIN-806-0018**

NICKEL PLATING R/A SMA FEMALE CONNECTOR



**DOSIN-806-0020**

SMA PLUG CRIMP FOR CABLE RG174



**DOSIN-806-0022**

SMA PLUG R/A CRIMP



**DOSIN-806-0024**

SMA JACK STRAIGHT PCB RECEPTACLE



**DOSIN-806-0026**

SMA JACK PANEL RECEPTACLE (2 HOLE)



**DOSIN-806-0028**

SMA FEMALE FLANGE CONNECTOR(12.7X12.7)



**DOSIN-806-0030**

SMA DOUBLE PLUG



**DOSIN-806-0032**

SMA PLUG FOR CABLE RG178



**DOSIN-806-0041**

R/A SMA JACK FOR PCB MOUNT



**DOSIN-806-0052**

STRAIGHT PCB SMA JACK



**DOSIN-806-0100**

R/A PCB SMA JACK



**DOSIN-806-0150**

WATERPROOF STRAIGHT SMA JACK FOR RG174



**DOSIN-806-0160**

PANEL RECEPTACLE SMA JACK CONNECTOR



**DOSIN-806-0175**

180 DEGREE PCB SMA JACK CONNECTOR



**DOSIN-806-0218**

EDGE MOUNT STRAIGHT SMA JACK



**DOSIN-806-0126**

LONGER WATERPROOF SMA JACK CONNECTOR 90 DEGREE



**DOSIN-806-0043**

SOLDER TYPE SMA JACK



**DOSIN-806-0089**

90 DEGREE SMA JACK FOR PCB MOUNT



**DOSIN-806-0111**

180 DEGREE SMA JACK FOR PCB



**DOSIN-806-0152**

CRIMP TYPE SMA JACK FOR CABLE



**DOSIN-806-0174**

LONG THREAD 90 DEGREE SMA JACK FOR PCB



**DOSIN-806-0193**

RIGHT ANGLE SMA JACK FOR PCB



**DOSIN-806-0182**

4 HOLE FLANGE CRIMP SMA JACK FOR CABLE



**DOSIN-806-0197**

SOLDER TYPE SMA JACK FOR SEMI RIGID CABLE RG405





**DOSIN-807-0018**

STRAIGHT SMB JACK FOR PCB



**DOSIN-807-0021**

180 DEGREE CRIMP SMB PLUG FOR CABLE



**DOSIN-807-0025**

R/A SMB PLUG FOR PCB MOUNT



**DOSIN-807-0010**

SOLDER TYPE R/A SMB PLUG FOR SEMI-RIGID CABLE



**DOSIN-807-0015**

NICKEL PLATED CRIMP SMB JACK CONNECTOR



**DOSIN-807-0001**

R/A CRIMP SMB PLUG



**DOSIN-807-0007**

75 OHM SMB STRAIGHT PCB JACK



**DOSIN-807-0027**

SMT TYPE SMB JACK



**DOSIN-807-0020**

90 DEGREE SMB PLUG FOR CABLE RG174



**DOSIN-807-0022**

R/A PCB SMB JACK



**DOSIN-807-0011**

R/A FAKRA SMB JACK CONNECTOR



**DOSIN-807-0014**

STRAIGHT CRIMP SMB JACK FOR Rg316



**DOSIN-807-0023**

SMB CRIMP PLUG FOR CABLE



**DOSIN-807-0005**

STRAIGHT EDGE MOUNT SMB JACK



**DOSIN-807-0026**

STRAIGHT EDGE MOUNT SMB PLUG



**DOSIN-807-0006**

R/A SMB JACK FOR PCB



**DOSIN-809-0013**

STRAIGHT MCX PLUG FOR PCB



**DOSIN-809-0041**

SURFACE MOUNT MCX JACK



**DOSIN-809-00005**

STRAIGHT CRIMP MCX MALE FOR RG174



**DOSIN-809-0009**

SMT TYPE MCX JACK CONNECTOR



**DOSIN-809-0011**

STRIAGHT MCX JACK FOR PCB



**DOSIN-809-0017**

180 DEGREE MMCX JACK PCB MOUNT



**DOSIN-809-0003**

MMCX PLUG FOR PCB



**DOSIN-809-0001**

180 DEGREE MMCX JACK FOR PCB



**DOSIN-809-0002**

180 DEGREE MCX JACK PCB MOUNT



**DOSIN-809-0014**

R/A MCX JACK PCB



**DOSIN-809-0015**

SOLDER TYPE 90 DEGREE MCX PLUG FOR CABLE



**DOSIN-809-0022**

90 DEGREE CRIMP TYPE MCX MALE FOR Rg316



**DOSIN-809-0010**

R/A MCX JACK FOR PCB



**DOSIN-809-0007**

R/A CRIMP TYPE MMCX PLUG FOR CABLE



**DOSIN-809-0008**

PCB MOUNT MMCX JACK CONNECTOR



**DOSIN-809-0004**

STRAIGHT MMCX CRIMP PLUG FOR CABLE

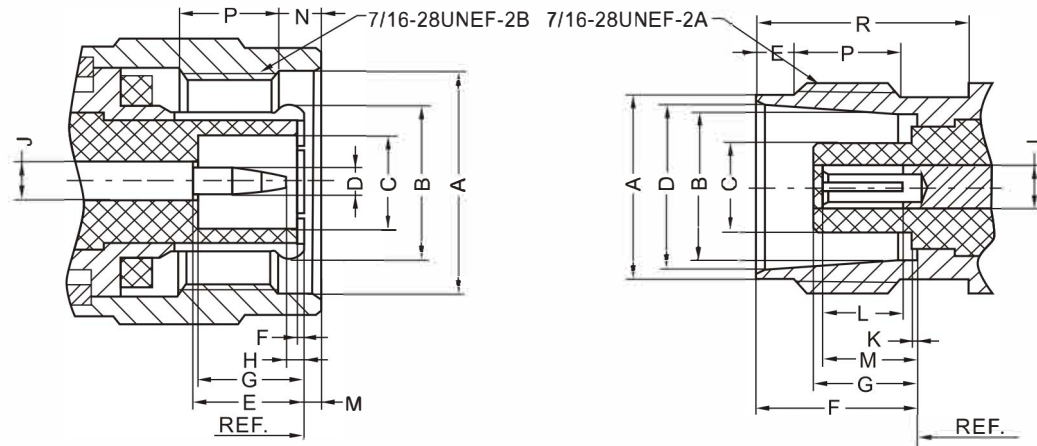




## TNC/RPTNC CONNECTORS

The Threaded Neil Concealment connector emerged in 1956 as an alternative to the bayonet coupling Mechanism of the BNC. Utilizing the same basic structural parameters as the BNC connector, only miniature, They are two versions of TNC connectors: Standard and Reverse Polarity. The standard type of TNC operates in frequency ranges between DC-11 GHz, and is often used in applications which have performance Requirements such as networks, antennas, telecom, cable assembly and cellular system.

Electronic instruments, and can be interchangeable with those that meet the specification of IEC169-4.



PLUG		
Letter	Millimeters	
	Minimum	Maximum
A	11.18	-
B	-	8.18
C	4.83	-
D	1.32	1.37
E	5.33	5.84
F	0.15	-
G	5.28	5.79
H	0.08	-
J	2.14nom.	
M	-	198
N	1.60	-
P	3.96	-

JACK		
Letter	Millimeters	
	Minimum	Maximum
A	9.60	9.70
B	8.10	8.15
C	-	4.72
D	8.31	8.46
E	1.73	2.24
F	8.31	8.51
G	4.78	5.28
J	2.14nom.	
K	-	0.15
L	4.95	-
M	4.72	5.23
P	4.75	-
R	10.52	-

## MAJOR TECHNICAL CHARACTERISTICS

Temperature Range	-55~+155°C	Insulation resistance	≥ 5000MΩ
Vibration	100m/S <sup>2</sup> (10~2000Hz) 15g	Center conductor retention force	≤ 0.57N
Impedance	50Ω	Insertion Loss	≤ 0.20dB
Frequency Range	DC~11GHz	Voltage Standing Wave Ratio	≤ 1.22/3GHz
Working Voltage	500V r.m.s at sea level	Straight	≤ 1.30/3GHz
Withstanding Voltage	1500V r.m.s at sea level	Right angle	≥ 500 (cycles)
Contact resistance		Durability(mating)	
Center Contact	≤ 10mΩ		
Outer Contact	≤ 2.5mΩ		

## APPLICABLE STANDARD

MIL-C-39012; CECC 22200; IEC 60169-17.

## DOSIN-802-0001

TNC PLUG CRIMP  
CABLE:RG58/59



## DOSIN-802-0003

RP TNC MALE CONNECTOR  
FOR CABLE Rg59 RG59



## DOSIN-802-0005

RP TNC PLUG FOR  
ANTENNA



## DOSIN-802-0007

TNC JACK BULKHEAD



## DOSIN-802-0009

TNC JACK BULKHEAD CRIMP  
CABLE:RG58/RG59/RG6



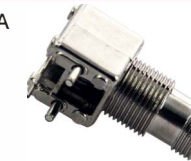
## DOSIN-802-0011

R/A TNC JACK FOR PCB



## DOSIN-802-0013

TNC JACK PCB MOUNT R/A



## DOSIN-802-0015

WATERPROOF CRIMP  
TNC JACK FOR  
CABLE RG174 RG58



## DOSIN-802-0002

RP-TNC CRIMP MALE  
FOR CABLE RG179



## DOSIN-802-0004

TNC PLUG R/A CRIMP  
CABLE:RG58/RG59/RG6  
/RG174



## DOSIN-802-0006

CLAMP TYPE TNC PLUG  
FOR RG213



## DOSIN-802-0008

TNC JACK CRIMP TYPE



## DOSIN-802-0010

COPPER R/A TNC  
JACK PCB MOUNT



## DOSIN-802-0012

R/A TNC JACK PCB MOUNT



## DOSIN-802-0014

SOLDER TYPE  
TNC JACK FOR CABLE



## DOSIN-802-0016

COPPER TNC R/A  
JACK FOR PCB

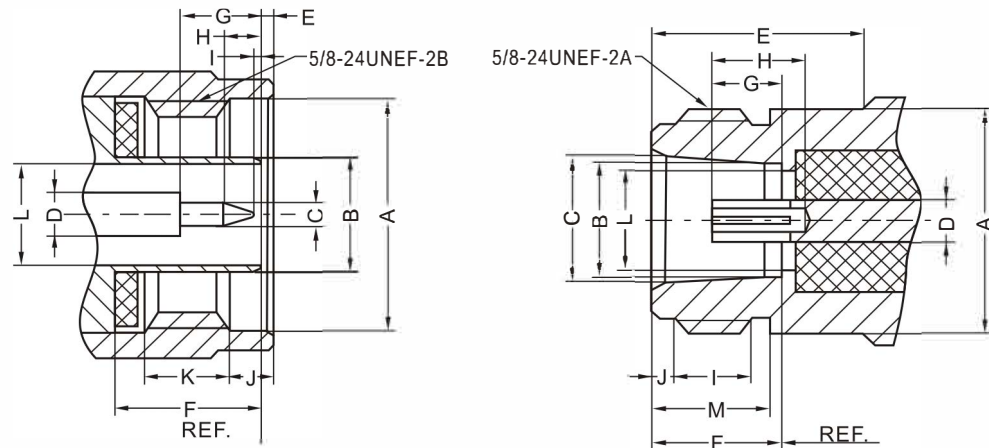




## TYPE N CONNECTORS

The development of Type N connector by the United States Army/Navy ran directly parallel to the escalation of U.S. Involvement in WWII. It was finally released in 1942, shortly after the U.S. officially entered the war, and since that time it has been a staple in RF and Microwave applications all over The world.

Due to N type connectors joins by one whorl, it has the characteristic of reliable and strong ant-vibration nature, Machinery and electric performance finely. It is used in vibration and environment abominable radio equipment of terms and instrument and ground launch system join the coaxial cable of the radio frequency extensively.



PLUG		
Letter	Millimeters	
	Minimum	Maximum
A	16.00	-
B	8.05	8.10
C	1.64	1.67
D	3.04nom.	
E	0.41	1.52
F	10.11	10.46
G	5.28	5.36
H	3.30	4.32
I	0.08	-
J	4.01	4.27
K	4.50	-
L	7.00nom.	

JACK		
Letter	Millimeters	
	Minimum	Maximum
A	-	15.93
B	8.03	8.13
C	8.53	8.74
D	3.04nom.	
E	10.72	-
F	9.05	9.19
G	5.18	5.26
H	5.33	-
I	4.37	-
J	1.19	1.96
L	7.00nom.	
M	6.76	-

## MAJOR TECHNICAL CHARACTERISTICS

Temperature Range	-55~+1550C(PECable-40~+85°C)	Insulation resistance	≥5000MΩ
Vibration	100m/S <sup>2</sup> (10~500Hz)	Center conductor retention force	≤ 0.56N
Impedance	50Ω	Insertion Loss	≤ 0.24dB(6GHz)
Frequency Range	DC~11GHz	Voltage Standing Wave Ratio	≤ 1.15/6GHZ
Working Voltage	1000V r.m.s at sea level	Straight	≤ 1.25/6GHZ
Withstanding Voltage	2500V r.m.s at sea level	Right angle	450N
Contact resistance		Coupling nut retention force	≤500 ( cycles )
Center Contact	≤ 1mΩ	Durability(mating)	
Outer Contact	≤ 1mΩ		

## APPLICABLE STANDARD

MIL-C-39012 ; CECC 22210 ; IEC 60169-16.

### DOSIN-805-0001

N MALE CLAMP  
FOR LMR300/400



### DOSIN-805-0003

N MALE CRIMP 50OHM  
CABLE:RG58



### DOSIN-805-0005

N PLUG R/A CRIMP  
CABLE:RG58/RG59/RG6/  
RG174/RG213



### DOSIN-805-0007

CLAMP N PLUG  
FOR CABLE LMR195



### DOSIN-805-0009

GOLD-PLATING N JACK  
PANEL RECEPTACLE



### DOSIN-805-0011

N JACK PANEL  
RECEPTACLE



### DOSIN-805-0013

N "T" TYPE, ONE  
PLUG TO TWO JACK



### DOSIN-805-0015

N "L" TYPE, ONE  
PLUG TO ONE JACK



### DOSIN-805-0002

N PLUG CRIMP  
CABLE: RG58/RG59/RG6/  
RG174/RG213



### DOSIN-805-0004

N PLUG CRIMP TYPE  
CABLE:RG58/RG59/RG6



### DOSIN-805-0006

SOLDER TYPE N  
MALE CONNECTOR



### DOSIN-805-0008

N JACK BULKHEAD



### DOSIN-805-0010

N JACK CRIMP PANEL  
RECEPTACLE



### DOSIN-805-0012

BULKHEAD SOLDER TYPE  
N JACK



### DOSIN-805-0014

N JACK BULKHEAD  
SOCKET CRIMP  
CABLE:RG174/RG316



### DOSIN-805-0016

N JACK CHASSIS  
RECEPTACLE (4 HOLES)





**DOSIN-836-0001**

BULKHEAD SO239  
UHF JACK



**DOSIN-836-0003**

R/A CRIMP SO239  
UHF JACK



**DOSIN-836-0005**

PANEL RECEPTACLE  
UHF FEMALE FOR CABLE



**DOSIN-836-0007**

UHF JACK CLAMP  
FOR RG8 LMR200  
WITH FLANGE



**DOSIN-836-0009**

90 DEGREE CRIMP  
UHF PLUG FOR RG214  
LMR195



**DOSIN-836-0011**

CLAMP TYPE PL259  
UHF PLUG FOR LMR300  
LMR600



**DOSIN-836-0013**

R/A MINI UHF JACK  
FOR PCB



**DOSIN-836-0015**

180 DEGREE UHF PLUG  
PL259



**DOSIN-836-0002**

DOUBLE UHF JACK ADAPTER



**DOSIN-836-0004**

CRIMP TYPE UHF JACK  
FOR LMR195



**DOSIN-836-0006**

CHASSIS MOUNT UHF  
JACK CONNECTOR



**DOSIN-836-0008**

CRIMP UHF PLUG FOR  
RG58 LMR300 PL259



**DOSIN-836-0010**

CLAMP TYPE UHF JACK  
SO239



**DOSIN-836-0012**

SOLDER TYPE UHF  
PLUG FOR CABLE



**DOSIN-836-0014**

SILVER PLATED CRIMP  
UHF PLUG RG58 RG59



**DOSIN-836-0016**

T TYPE UHF MALE TO DUAL  
FEMALE ADAPTER



**DOSIN-868-0001**

STRAIGHT 1.0/2.3 DIN  
PLUG FOR RG174



**DOSIN-868-0005**

R/A 1.0/2.3 DIN JACK  
FOR RG179 ST212



**DOSIN-866-0001**

90 DEGREE CLAMP  
L9 PLUG FOR ST212



**DOSIN-866-0009**

R/A CRIMP MALE  
1.6/5.6 DIN FOR  
RG316



**DOSIN-846-0002**

STRAIGHT 7/16 DIN  
MALE CONNECTOR



**DOSIN-846-0004**

CLAMP 7/16 DIN JACK  
FOR RG8



**DOSIN-846-0008**

DUAL 7/16 DIN FEMALE  
CONNECTOR



**DOSIN-846-0010**

7/16 DIN MALE TO FEMALE  
ADAPTER



**DOSIN-868-0004**

RIGHT ANGLE CRIMP  
1.0/2.3 DIN PLUG  
FOR CABLE



**DOSIN-868-0002**

180 DEGREE PCB  
1.0/2.3 DINJACK



**DOSIN-866-0008**

90 DEGREE CRIMP  
1.6/5.6 DIN JACK  
FOR CABLE



**DOSIN-846-0001**

R/A CRIMP 7/16 DIN  
MALE CONNECTOR



**DOSIN-846-0003**

CLAMP TYPE  
7/16 DIN PLUG FOR  
LMR200/300/400



**DOSIN-846-0005**

PANEL MOUNT  
7/16 DIN JACK



**DOSIN-846-0009**

90 DEGREE CLAMP  
7/16 DIN MALE FOR  
LMR195 RG214



**DOSIN-846-0011**

7/16 DIN MALE TO MALE  
ADAPTER





## RF ADAPTERS

RF adapters are used to connect different waveguides and/or coaxial

Types. They are passive devices that direct radio frequency(RF) Signals with minimal return loss. There are three main types of RF adapters: coaxial, waveguide, and Coaxial/waveguide. Coaxial RF adapters connect two different types Of coaxial cable, or terminate a coaxial port. Waveguide RF adapters connect two different types of waveguides, or terminate a waveguide Port. Coaxial / waveguide adapters connect a coaxial cable to a waveguide, or vice-versa.

Product specifications to consider when selecting RF adapters include frequency range, maximum input power, Voltage standing wave ratio (VSWR), return loss, and adapter style. VSWR is a measure of the amount of RF Power reflected back to the signal source because of impedance mismatches. Styles for RF adapters include straight jack-jack, straight jack-plug, straight plug-plug, angled jack-jack, angled jack-plug, angled plug-plug, Jack-jack -jack tee, plug-plug-plug tee, plug-jack-plug tee, jack-jack-plug tee, and plug-plug-jack tee.

### DOSIN-818-0001

SMA JACK TO UHF JACK ADAPTER



### DOSIN-818-0003

SMA JACK TO UHF PLUG ADAPTER



### DOSIN-818-0005

F JACK TO N PLUG ADAPTER



### DOSIN-818-0007

N DOUBLE PLUG ADAPTER



### DOSIN-818-0009

N JACK TO BNC PLUG ADAPTER



### DOSIN-818-0011

SMA TO N FEMALE FLANGE ADAPTER



### DOSIN-818-0002

SMA PLUG TO UHF JACK ADAPTER



### DOSIN-818-0004

SMA PLUG TO N PLUG ADAPTER



### DOSIN-818-0006

N PLUG TO BNC PLUG ADAPTER



### DOSIN-818-0008

BNC PLUG TO UHF FEMALE ADAPTER



### DOSIN-818-0010

SMA PLUG TO TNC JACK ADAPTER



### DOSIN-818-0012

DOUBLE BNC MALE ADAPTER



### DOSIN-818-0013

BNC L TYPE, ONE PLUG ONE JACK ADAPTER



### DOSIN-818-0015

F FEMALE TO BNC MALE ADAPTER



### DOSIN-818-0017

BNC FEMALE TO SMA MALE ADAPTER



### DOSIN-818-0019

BNC FEMALE TO TNC MALE ADAPTER



### DOSIN-818-0021

F R/A TO PAL FEMALE ADAPTER



### DOSIN-818-0023

F MALE TO PAL MALE ADAPTER



### DOSIN-818-0025

BNC MALE TO RCA FEMALE ADAPTER



### DOSIN-818-0027

BNC MALE TO BANANA PLUG ADAPTER



### DOSIN-818-0014

SMA TO BNC MALE ADAPTER



### DOSIN-818-0016

TNC FEMALE TO BNC MALE ADAPTER



### DOSIN-818-0018

DOUBLE BNC FEMALE ADAPTER



### DOSIN-818-0020

SMA MALE TO N FEMALE ADAPTER



### DOSIN-818-0022

THREE F FEMALE CONNECTOR ADAPTER



### DOSIN-818-0024

F FEMALE TO RCA MALE ADAPTER



### DOSIN-818-0026

BNC FEMALE TO RCA ADAPTER



### DOSIN-818-0028

F FEMALE TO PAL FEMALE ADAPTER





**DOSIN-818-0029**

BNC PLUG TO 1.6/5.6  
DIN JACK ADAPTER



**DOSIN-818-0031**

MINI UHF MALE TO  
N FEMALE ADAPTER



**DOSIN-818-0033**

BNC MALE TO UHF  
FEMALE ADAPTER



**DOSIN-818-0035**

TNC PLUG TO SMA  
JACK ADAPTER



**DOSIN-818-0037**

TNC PLUG TO BNC JACK  
ADAPTER



**DOSIN-818-0039**

F PLUG TO N JACK  
ADAPTER



**DOSIN-818-0041**

STRAIGHT N JACK TO UHF  
PLUG ADAPTER



**DOSIN-818-0043**

N PLUG TO 7/16 DIN  
JACK ADAPTER



**DOSIN-818-0030**

BNC JACK TO 1.6/5.6  
DIN PLUG ADAPTER



**DOSIN-818-0032**

MINI UHF MALE TO  
UHF FEMALE ADAPTER



**DOSIN-818-0034**

TNC FEMALE TO SMA  
FEMALE ADAPTER



**DOSIN-818-0036**

TNC PLUG TO N  
JACK ADAPTER



**DOSIN-818-0038**

BNC MALE TO MINI  
UHF FEMALE ADAPTER



**DOSIN-818-0040**

N PLUG TO UHF JACK  
ADAPTER



**DOSIN-818-0042**

RP-SMA PLUG TO  
DUAL RP-SMA JACK  
ADAPTER



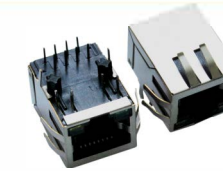
**DOSIN-818-0044**

N PLUG TO 7/16 DIN  
PLUG ADAPTER



**DOSIN-819-0001**

(SINGLE PORT)SHIELD  
JACKS WITH LED AND  
EMI(SIDE ENTRY)



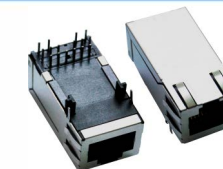
**DOSIN-819-0003**

(DUAL PORT)SHIELD  
JACKS WITH LED AND  
EMI(SIDE ENTRY)



**DOSIN-819-0005**

SHIELD JACKS WITH  
EMI 1.3 INCH  
(SIDE ENTRY)



**DOSIN-819-0007**

(DUAL USB)6P SHIELD  
JACKS WITH LED AND  
EMI(SIDE ENTRY)



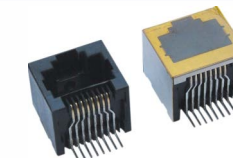
**DOSIN-819-0009**

5J SERIES 8P 2X4  
SHIELD EMI WITH LED



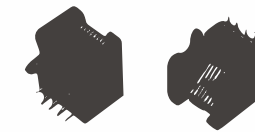
**DOSIN-819-0011**

SMD 8P8C 180 °  
(SHIELDED)



**DOSIN-819-0013**

53 SERIES 8P8C



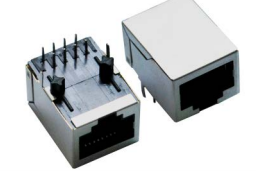
**DOSIN-819-0015**

59 SERIES 8PX4  
PLASTIC



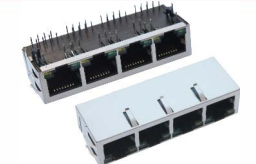
**DOSIN-819-0002**

(SINGLE PORT)SHIELD  
JACKS(SIDE ENTRY)



**DOSIN-819-0004**

(FOUR PORT)SHIELD  
JACKS WITH LED AND  
EMI(SIDE ENTRY)



**DOSIN-819-0006**

(SING USB)8P SHIELD  
JACK(SIDE ENTRY)



**DOSIN-819-0008**

(DUAL USB)8P JACKS  
WITHOUT TRANSFORMER  
(SIDE ENTRY)



**DOSIN-819-0010**

Rj45 SMT 8P8C  
PH5.46MM



**DOSIN-819-0012**

SIDE ENTRY PCB JACK  
(VERY LOW PROFILE.  
WITH SOLDER PAD)



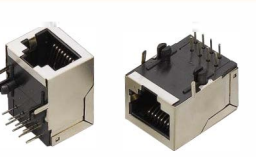
**DOSIN-819-0014**

59 SERIES 8P8C  
PLASTIC



**DOSIN-819-0016**

59 SERIES 8P8C SHIELD





**DOSIN-811-0001**

SMA FEMALE TO I-PEX FOR RF COAXIAL CABLE



**DOSIN-811-0003**

IPX / U.FL TO TNC FEMALE BULKHEAD PIGTAIL CABLE



**DOSIN-811-0005**

TNC TO IPEX FOR:RG174



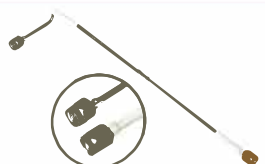
**DOSIN-811-0007**

UHF MALE TO FEMALE FOR:RG58



**DOSIN-811-0009**

SMA COAXIAL CONNECTOR FOR SEMI-RIGID CABLE



**DOSIN-811-0011**

SMA FEMALE TO MCX MALE FOR RG178/316 COAXIAL CABLE



**DOSIN-811-0013**

RIGHT ANGLE SMA FEMALE BULKHEAD TO MCX COAXIAL CABLE



**DOSIN-811-0015**

BNC FEMALE COAXIAL CABLE



**DOSIN-811-0002**

F FEMALE TO I-PEX PIGTAIL CABLE



**DOSIN-811-0004**

SMA TO I-PEX CONNECTOR FOR COAXIAL CABLE



**DOSIN-811-0006**

SMA CONNECTOR COAXIAL CABLE



**DOSIN-811-0008**

PAL TO I-PEX COAXIAL CABLE



**DOSIN-811-0010**

SMA MALE FOR SEMI-RIGID CABLE



**DOSIN-811-0012**

RIGHT ANGLE SMA MALE BULKHEAD TO I-PEX COAXIAL CABLE



**DOSIN-811-0014**

RF SMA TO MCX CONNECTOR COAXIAL CABLE



**DOSIN-811-0016**

F CONNECTOR COAXIAL CABLE



**DOSIN-811-0017**

F TO SMB CABLE



**DOSIN-811-0019**

DOUBLE SMA MALE COAXIAL CABLE



**DOSIN-811-0021**

N TO SMA COAXIAL CABLE



**DOSIN-811-0023**

SMA CONNECTOR FOR RG174 CABLES



**DOSIN-811-0025**

SMA 90 DEGREE COAXIAL CABLE



**DOSIN-811-0027**

SMA MALE TO I-PEX CABLE



**DOSIN-811-0029**

BNC MALE COAXIAL CABLE



**DOSIN-811-0018**

SMA MALE TO F MALE CABLE



**DOSIN-811-0020**

PAL FEMALE COAXIAL CABLE



**DOSIN-811-0022**

I-PEX COAXIAL CABLE



**DOSIN-811-0024**

MCX COAXIAL CABLE



**DOSIN-811-0026**

N MALE TO FEMALE FOR:RG58



**DOSIN-811-0028**

DOUBLE BNC MALE COAXIAL CABLE



**DOSIN-811-0030**

SMA FEMALE TO I-PEX COAXIAL CABLE



DOSIN offers an extensive selection of cable assembly. ODM/OEM service available. Just tell us your requirements about connectors, cables, as well as cable length, We will provide the perfect configuration you need.

Welcome to contact us via [dosin2005@dosin-china.com](mailto:dosin2005@dosin-china.com)



**DOSIN-820-0001**

5DBI 2.4GHZ ANTENNA



**DOSIN-820-0003**

2DBI GSM ANTENNA



**DOSIN-820-0005**

2.4GHZ WLAN ANTENNA  
OUTDOOR ANTENNA WIFI



**DOSIN-820-0007**

5DBI 2.4-5.85G ANTENNA



**DOSIN-820-0009**

5DBI SMA ANTENNA



**DOSIN-820-0011**

433MM MHZ ANTENNA



**DOSIN-820-0013**

N 90 DEGREE  
GSM ANTENNA



**DOSIN-820-0015**

RCA TV TUNER  
CONNCECTOR ANTENNA



**DOSIN-820-0002**

GSM ANTENNA



**DOSIN-820-0004**

2DBI 2.4G ANTENNA  
WITH SMA/TNC



**DOSIN-820-0006**

CDMA TERMINAL  
RUBBER ANTENNA  
BNC CONNECTOR



**DOSIN-820-0008**

CDMA GSM WIFI 3G QUAD  
BAND RUBBER ANTENNA  
WITH SMA MALE  
CONNECTOR



**DOSIN-820-0010**

2-3DBI 2.4G ANTENNA



**DOSIN-820-0012**

2.4G WIFI WIRELESS  
RUBBER DUCK ANTENNA  
BNC CONNECTOR



**DOSIN-820-0014**

3DBI 2.4G ANTENNA



**DOSIN-820-0016**

SMA CONNECTOR  
ANTENNA



TYPE NO.	CENTER CONDUCTOR		DIELECTRIC O.D. MAX		JACKET O.D. MAX		NOMINAL IMPEDANCE OHM	MAX Oper Voltage Vms
	NO./Inch	NO./mm	Inch	mm	Inch	mm		
RG-6/U	1/0.0285"	1/0.724	0.185"	4.699	0.332"	8.433	75	2700
RG-6A/U	1/0.0285"	1/0.724	0.185"	4.699	0.332"	8.433	75	2700
RG-8/U	7/0.0285"	7/0.724	0.285"	7.239	0.405"	10.287	50	4000
RG-8A/U	7/0.0285"	7/0.724	0.285"	7.239	0.405"	10.287	50	5000
RG-9/U	7/0.0285"	7/0.724	0.280"	7.112	0.420"	10.668	50	4000
RG-9A/U	7/0.0285"	7/0.724	0.280"	7.112	0.420"	10.668	50	4000
RG-9B/U	7/0.0285"	7/0.724	0.280"	7.112	0.420"	10.668	50	5000
RG-11/U	7/0.0159"	7/0.404	0.285"	7.239	0.405"	10.287	75	4000
RG-11A/U	7/0.0159"	7/0.404	0.285"	7.239	0.405"	10.287	75	5000
RG-58/U	1/0.0320"	1/0.813	0.116"	2.946	0.195"	4.953	50	1900
RG-58A/U	19/0.0071"	19/0.18	0.116"	2.946	0.195"	4.953	50	1900
RG-58C/U	19/0.0071"	19/0.18	0.116"	2.946	0.195"	4.953	50	1900
RG-59/U	1/0.0253"	1/0.643	0.146"	3.708	0.242"	6.147	75	2300
RG-59A/U	1/0.0253"	1/0.643	0.146"	3.708	0.242"	6.147	75	2300
RG-59B/U	1/0.0230"	1/0.584	0.146"	3.708	0.242"	6.147	75	2300
RG-62/U	1/0.0253"	1/0.643	0.146"	3.708	0.242"	6.147	93	750
RG-62A/U	1/0.0253"	1/0.643	0.146"	3.708	0.242"	6.147	93	750
RG-62B/U	7/0.0080"	7/0.203	0.146"	3.708	0.242"	6.147	93	750
RG-141/U	1/0.0359"	1/0.912	0.116"	2.946	0.190"	4.826	50	1900
RG-141A/U	1/0.0390"	1/0.991	0.116"	2.946	0.190"	4.82	50	1900
RG-142/U	1/0.0359"	1/0.912	0.116"	2.946	0.206"	5.232	50	1900
RG-142A/U	1/0.0390"	1/0.991	0.116"	2.946	0.206"	5.232	50	1900
RG-142B/U	1/0.0390"	1/0.991	0.116"	2.946	0.195"	4.953	50	1900
RG-174/U	7/0.0063"	7/0.160	0.060"	1.520	0.100"	2.667	50	1500
RG-174A/U	7/0.0063"	7/0.160	0.060"	1.520	0.100"	2.667	50	1500
RG-178/U	7/0.0040"	7/0.102	0.036"	0.914	0.079"	2.000	50	1000
RG-178A/U	7/0.0040"	7/0.102	0.034"	0.864	0.075"	1.905	50	1000
RG-178B/U	7/0.0040"	7/0.102	0.034"	0.864	0.075"	1.905	50	1000
RG-179/U	7/0.0040"	7/0.102	0.057"	1.448	0.094"	2.388	75	1200
RG-179A/U	7/0.0040"	7/0.102	0.063"	1.600	0.105"	2.667	75	1200
RG-179B/U	7/0.0040"	7/0.102	0.063"	1.600	0.100"	2.540	75	1200
RG-187/U	7/0.0040"	7/0.102	0.060"	1.600	0.110"	2.794	75	1200
RG-187A/U	7/0.0040"	7/0.102	0.060"	1.524	0.110"	2.794	75	1200
RG-188/U	7/0.0067"	7/0.170	0.060"	1.524	0.110"	2.794	50	1200
RG-188A/U	7/0.0067"	7/0.170	0.060"	1.524	0.110"	2.794	50	1200
RG-196/U	7/0.0004"	7/0.010	0.034"	0.864	0.080"	2.032	50	1000
RG-196A/U	7/0.0004"	7/0.010	0.034"	0.864	0.080"	2.032	50	1000
RG-210/U	1/0.0253"	1/0.643	0.146"	3.708	0.242"	6.147	93	750
RG-213/U	7/0.0296"	7/0.752	0.285"	7.239	0.405"	10.287	50	5000
RG-214/U	7/0.0296"	7/0.752	0.285"	7.239	0.425"	10.795	50	5000
RG-223/U	1/0.0350"	1/0.889	0.116"	2.946	0.216"	5.486	50	1900
RG-316/U	7/0.0067"	7/0.170	0.060"	1.524	0.102"	2.591	50	1200
RG-400/U	19/0.0077"	19/0.0484	0.116"	2.946	0.195"	4.953	50	1900