

Arche

World's most cost-effective femtosecond laser

A suite of ultrafast fiber lasers with $65 \text{ MHz} \pm 2 \text{ MHz}$ repetition rate, centered at $1550 \text{ nm} \pm 5 \text{ nm}$, delivering $< 250 \text{ fs}$. Arche becomes a workhorse tool for many research and industrial applications requiring reliability and affordability.



Central Wavelength

$1550 \text{ nm} \pm 5 \text{ nm}$

Repetition Rate

$65 \text{ MHz} \pm 2 \text{ MHz}$

Average Power

20 mW

Pulse Width

$< 250 \text{ fs}$

/ Applications



Amplifier Seeding

Optical Characterization

Ultrafast Spectroscopy

Testing at telecom wavelengths

Arche

/ Technical Specifications

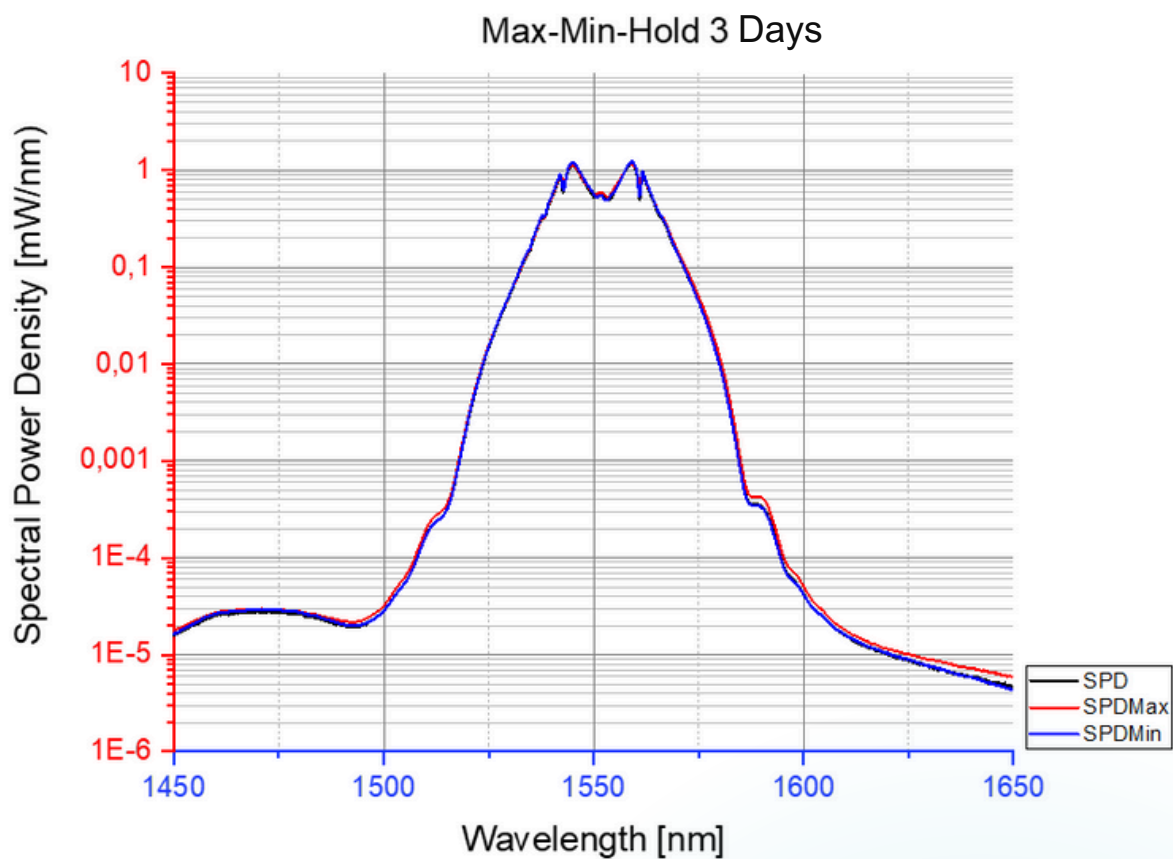
Wavelength:	Repetition Rate	Pulse Width:	Average Power:
1550 nm \pm 5 nm	65 MHz \pm 2 MHz	< 250 fs	20 mW

Central Wavelength:	1550 nm \pm 5 nm
Spectral Bandwidth:	> 15 nm
Repetition Rate:	65 MHz \pm 2 MHz
Average Power:	20 mW
Pulse Width:	< 250 fs
Polarization:	Linearly Polarized
Output Port:	Single Mode Fiber / 0.25 m (customizable)
Optical Output:	FC / APC Connector
Synchronization:	Optical Signal
Pulse Energy:	308 pJ
Peak Power:	1.23 kW
Spatial Mode Quality (M ²):	< 1.2
Cooling:	Air cooling
Power Requirements:	110 V - 220 V / 50 Hz-60 Hz
Operating Temperature:	20 - 30 °C
Storage Temperature	0 - 60 °C

OTHER DETAILED SPECS UNDER REQUEST

Arche

/ Optical Spectrum



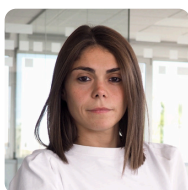
Arche

/ Additional information

Warranty:

12 months warranty or > 10,000h of continuous operation.

/ FYLA contact



Sales contact

Gaia Sardiello

gsardiello@fyla.com

+34 674 94 75 29

Support contact

support@fyla.com

+34 607 97 10 21

*The price may be different in the APAC area.