

RM SERIES SHELL SIZE 2 - 31mm CIRCULAR CONNECTORS

Introduction

RM Series are compact, circular connectors HIROSE has developed as the result of many years of research and proven experience to meet the most stringent demands of communication equipment as well as electronic equipment. RM Series is available in 5 shell sizes: 12, 15, 21, 24, and 31. There are also 16 kinds of contacts: 2, 3, 4, 5, 6, 8, 10, 12, 15, 20, 31, 40, and 55 (contacts 2 and 4 are available in two types). And also available water proof type in special series. The lock mechanisms with thread coupling

type, bayonet sleeve type or quick detachable type are easy to use.

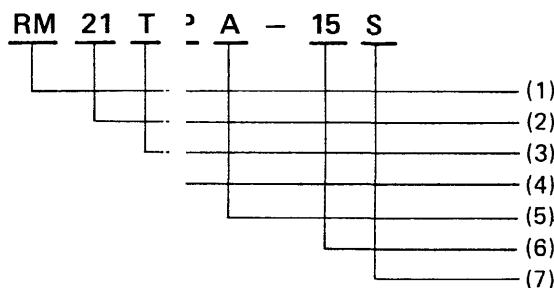
Various kinds of accessories are available.

RM Series are miniaturized in size, rugged and excellent in mechanical and electrical performance thus making it possible to meet the most stringent demands of users. Refer to the contact arrangements of RM series connectors on page 46.

Main materials (Note that the above may not apply depending on type.)

Part	Material	Finish
Shell	Brass and Zinc alloy	Nickel plated
Insulator	Synthetic resin	
Male contact	Copper alloy	Silver plated
Female contact	Copper alloy	Silver plated

Ordering Information



Product identification

- (1) RM: Round Miniature series name
- (2) 21: The shell size is figured by outer diameter of fitting section of plug and available in 5 types, 12, 15, 21, 24, 31.
- (3) T: Type of lock mechanism as follows;
 - T: Thread coupling type
 - B: Bayonet sleeve type
 - Q: Quick detachable type
- (4) P: Type of connector
 - P: Plug
 - R: Receptacle:
 - J: Jack
 - WP: Waterproof
 - WR: Waterproof receptacle
 - P-CP*: Cord clamp for plug

- R-C: Cap of receptacle
 - R-F: Square flange for receptacle
 - P-B: Cord bushing
 - (5) A: Shell model change mark
Each time the shell undergoes a change in enclosure or the like, it is marked as A, B, D, E. Do not use the letter for C, J, P, R avoiding confusion.
 - (6) 15: Number of pins
 - (7) S: Shape of contact
 - P: Pin
 - S: Socket
- However, connecting method of contact or type shall be classified adding with alphabetical letter.

(* is shown applicable diameter of cable)

Standard RM Series

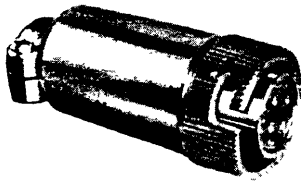
Standard RM series are more compact and higher in performance than our former models. Mechanically stable thanks to its rigid and simple construction. Used widely for all types of equipment, although no special measures are taken for resistance to harsh conditions such as dustproof or waterproof design.

RM12B Connectors

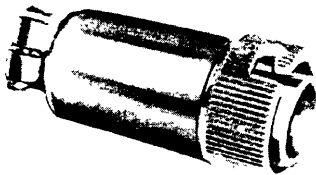
RM12B connectors (bayonet sleeve type) are provided with a bayonet sleeve locking mechanism, the most compact in the series.

(Bayonet sleeve type)

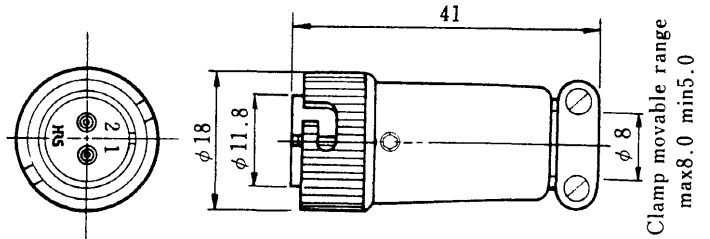
Plug



RM12BPG-4S(07)



RM12BPG-4PH

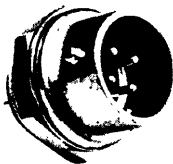


(An example in shape)

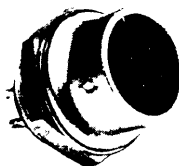
RS No.	Part No.	No of pins	HRS No.	Part No.	No of pins	
10S	567-0-07	RM12BPG-2S(07)	2	109-0811-9	RM12BPG-2PH	2
10S	568-2-07	RM12BPG-3S(07)	3	109-0812-1	RM12BPG-3PH	3
10S	569-5-07	RM12BPG-4S(07)	4	109-0813-4	RM12BPG-4PH	4
10S	570-4-07	RM12BPG-5S(07)	5	109-0814-7	RM12BPG-5PH	5
10S	571-7-07	RM12BPG-6S(07)	6	109-0815-0	RM12BPG-6PH	6
10S	616-3-07	RM12BPG-7S(07)	7	109-0816-2	RM12BPG-7PH	7

Receptacle

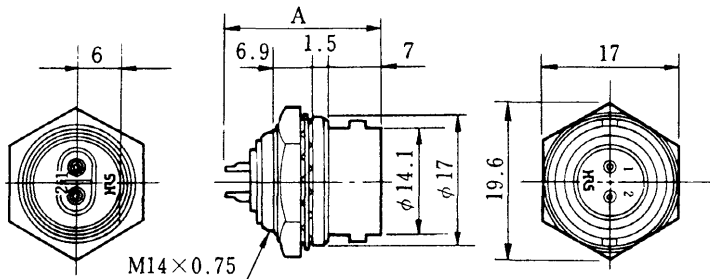
Receptacle(Jam Nut to be fastened)



RM12BRD-4PH



RM12BRD-4S



(An example in shape)

HRS No.	Part No.	No of pins	A	HRS No.	Part No.	No of pins	A	
10S	823-8	RM12BRD-2PH	2	20.5	109-0609-8	RM12BRD-2S	2	21.6
10S	824-0	RM12BRD-3PH	3	20.5	109-0610-7	RM12BRD-3S	3	21.6
10S	825-3	RM12BRD-4PH	4	20.5	109-0611-0	RM12BRD-4S	4	21.6
10S	826-6	RM12BRD-5PH	5	20.5	109-0612-2	RM12BRD-5S	5	21.6
10S	827-9	RM12BRD-6PH	6	20.5	109-0613-5	RM12BRD-6S	6	21.6
10S	828-1	RM12BRD-7PH	7	20.5	109-0619-1	RM12BRD-7S	7	21.6

Remarks: For mounting holes, see page 58.