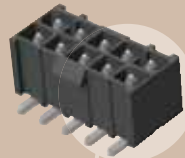


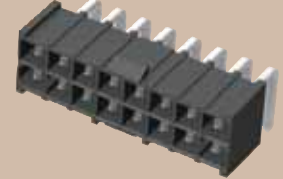


(4,19 mm) .165"

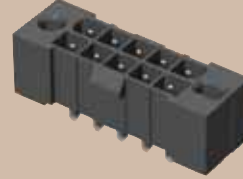
IPBT-105-H2-T-D-K



IPBT-108-H1-T-D-RA-K



IPBT-105-H1-T-D-GP



IPBT SERIES

ISOLATED TERMINAL POWER HEADER

SPECIFICATIONS

For complete specifications see www.samtec.com?IPBT

Insulator Material: Black Liquid Crystal Polymer

Contact Material: High Copper Alloy

Plating: Sn over 50µm (1,27 µm) Ni

Operating Temp Range: -55°C to +105°C

Voltage Rating: 500 VAC/707 VDC

RoHS Compliant: Yes

Lead-Free Solderable: Yes

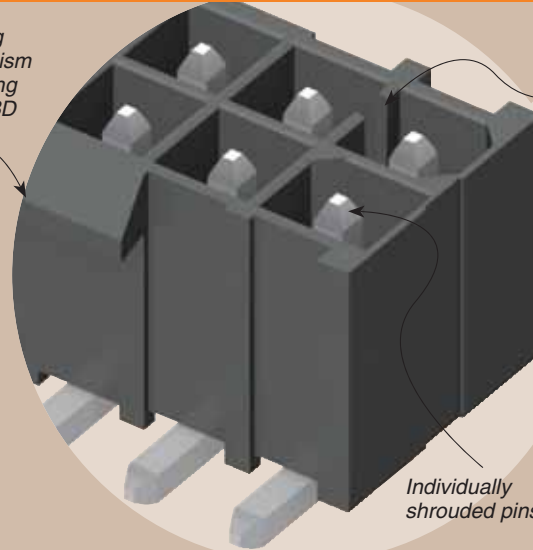
Lead-Free Solderable: Yes

Mates with: IPBS, IPBD, PMSD, PMSS

Latching mechanism for mating with IPBD Series

Keyed Polarization

IPBT/IPBS	
PINS	CURRENT RATING (PER CONTACT)
1	5.9 A
2	5.3 A
3	4.8 A
4	4.5 A
ALL	3.6 A



Individually shrouded pins

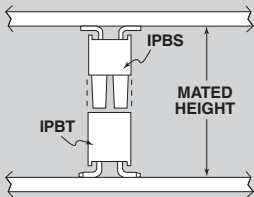
- Individually shrouded contacts
- Polarized guide post hole option

RECOGNITIONS

For complete scope of recognitions see www.samtec.com/quality



APPLICATION



IPBT/IPBS LEAD STYLE	MATED HEIGHT*
-H1/-01	(15,25) .600
-H2/-02	(16,84) .663
-H3/-01	(17,00) .670
-H4/-01	(19,00) .748
-H5/-01	(20,00) .787
-H6/-01	(25,00) .984

*Processing conditions will affect mated height.

ALSO AVAILABLE (MOQ Required)

- Other sizes
- Contact Samtec.

Note: Some lengths, styles and options are non-standard, non-returnable.

IPBT	1	NO. OF POSITIONS PER ROW	LEAD STYLE	PLATING OPTION	ROW OPTION	OPTION
		02, 03, 04, 05, 08, 10, 15 (-D only)	-H1 = Through-Hole	-T = Matte Tin	-S = Single Row	-RA = Right Angle (Lead Style -H1 only)
		02, 03, 04, 05 (-S only) (Standard sizes)	-H2 = Surface Mount		-D = Double Row	-GP = Guide Post Holes (8 positions not available)
			-H3 = Elevated Through-Hole (Specify "XX" from chart -D only)			-K = Keyed Polarization (not available with -GP option, is required callout if -GP not called out)

LEAD STYLE	A
-H3	(12,07) .475
-H4	(14,05) .553
-H5	(15,04) .592
-H6	(20,05) .789

Due to technical progress, all designs, specifications and components are subject to change without notice.

WWW.SAMTEC.COM