

# 87 26 250

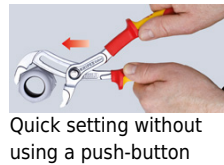
## KNIPEX Cobra® VDE Hightech Water Pump Pliers, insulated



- Adjustment by shifting one jaw directly on to the workpiece: fast, reliable and comfortable handling
- Opening at the touch of a button apart from the workpiece
- Fine adjustment for optimum adaptation to different sizes of workpieces and a comfortable handle width
- Good access to the workpiece due to slim size of head and joint area
- Self-locking on pipes and nuts: no slipping on the workpiece and low handforce required
- Gripping surfaces with special hardened teeth, teeth hardness approx. 61 HRC: high wear resistance and stable gripping
- Box-joint design for high stability due to double guide
- Guard prevents operators' fingers being pinched
- Chrome vanadium electric steel, forged, multi stage oil-hardened

The adjustment action to adapt to the workpiece is easy and reliable with the KNIPEX Cobra® VDE: place the upper gripping jaw of the opened pliers on the workpiece, push pliers to close, done!

<b>Article No.</b>	87 26 250
<b>EAN</b>	4003773071495
<b>Pliers</b>	chrome plated
<b>Handles</b>	insulated with multi-component grips, VDE-tested
<b>Head</b>	
<b>Insulation standard</b>	IEC 60900 DIN EN 60900
<b>Adjustment positions</b>	24
<b>Capacity for pipes, inches (diameter) Ø Inch</b>	2
<b>Capacities for nuts mm</b>	46
<b>Capacities for pipes (diameter) Ø mm</b>	50
<b>Length mm</b>	250
<b>Net weight g</b>	340



technical change and errors excepted



### Spare Parts

<b>Article No.</b>	<b>EAN</b>	
87 29 01	4003773079002	