



## Features:

- Tailored for emerging product designs
- Similar size to USB2.0 Micro-B
- Reversible plug orientation & cable direction
- Extended 5A current ranges plus USB Power delivery
- Designed to establish future USB performance needs
- High speed up to 10Gb/s

## Overview:

Amphenol's USB C type connectors, designed for emerging product designs are fully compliant to the newest C Type spec. The usability for these low profile connectors is enhanced by offering reversible plug and cable directions. The connectors also supports calable power charging by extending 5A current ranges plus USB power delivery.

## Applications:

### Smart Phones & Mobile Devices

- MP3 & music players
- Mobile phones
- Tablets, PCs, notebooks
- Portable charging bases
- Memory storage

### Automotive

- GPS systems/navigation
- Driver assistance systems
- Infotainment systems

### Consumer

- Copiers, printers, scanners
- Digital cameras, video cameras
- Digital & DVD media players
- LCD & TV panels
- Set top boxes

### Telecommunications

- Handsets
- ISDNs
- PBXs



To learn more about USB Type C connectors:

web: [amphenolcanada.com](http://amphenolcanada.com)

email: [sales@amphenolcanada.com](mailto:sales@amphenolcanada.com)

## Technical Characteristics:

| Materials              |   |
|------------------------|---|
| Contact                | Copper Alloy  |
| Shell                  | Stainless Steel   |
| Housing                | High Temperature Polymer UL94V-0, black   |
| Plating                |   |
| Contacts               | Selective Plating in Contact Area;<br>Solder Tail Matte Tin Over Nickel;<br>See drawing for more detail |
| Shell                  | Nickel Plating  |
| Coplanarity: 0.08 Max. |   |

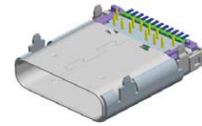
## Ordering Information:



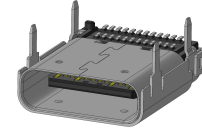
Surface Mount Receptacle  
PN: 12401610E4#2A



Overmold Plug  
PN: 12401562E4#2A



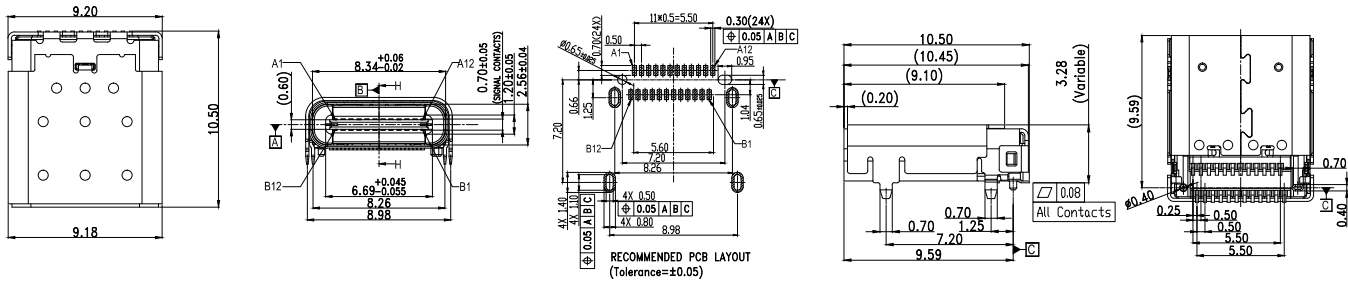
Through Hole Receptacle  
PN: 12401548E4#2A



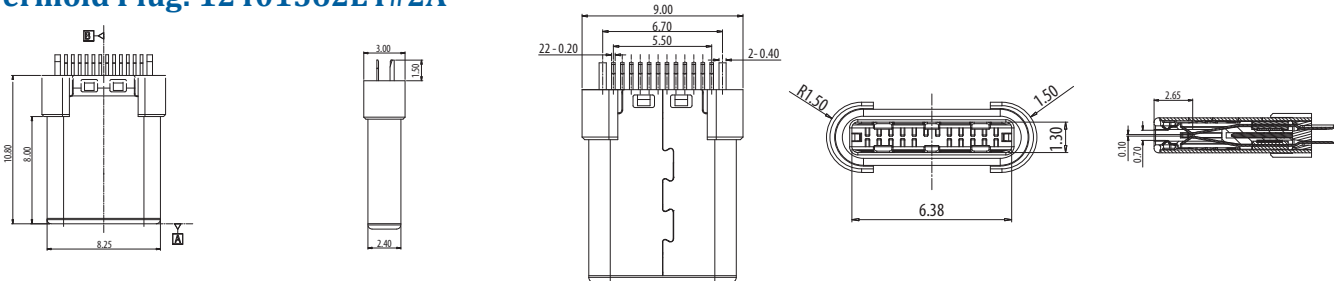
Hybrid Receptacle  
PN: 12401598E4#2A

## Dimensions:

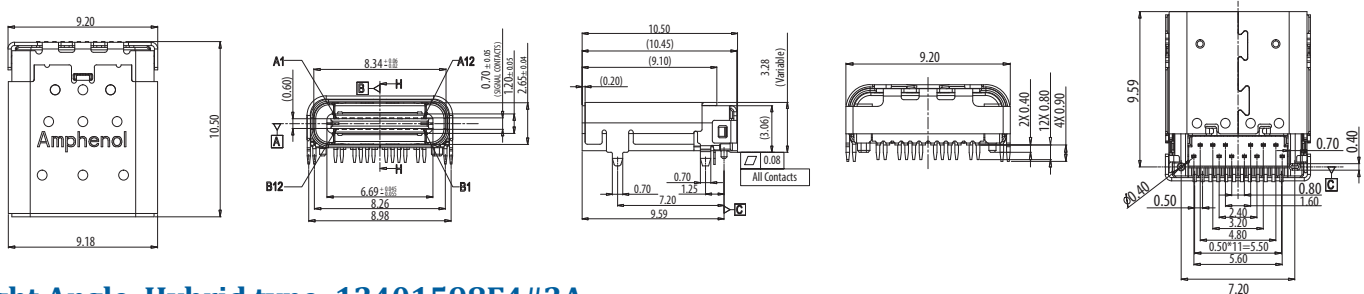
### Right Angle, Dual Row, SMT type: 12401610E4#2A



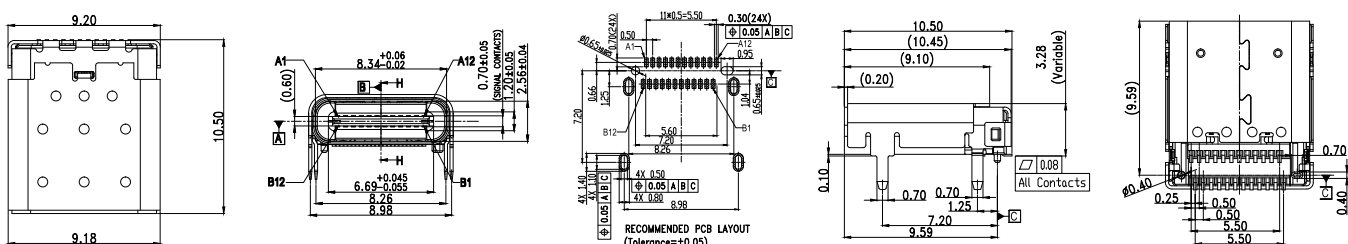
### Overmold Plug: 12401562E4#2A



### Right Angle, Dual row, Hybrid type : 12401548E4#2A



### Right Angle, Hybrid type: 12401598E4#2A



To learn more about USB Type C connectors:

web: [amphenolcanada.com](http://amphenolcanada.com)

email: [sales@amphenolcanada.com](mailto:sales@amphenolcanada.com)