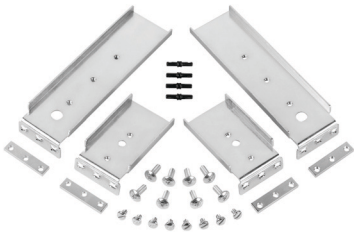


Brackets

Équerres Winkel



DZ63374-4
(2907)



DZ63460-4
(0201, 0204, 0301, 0305)



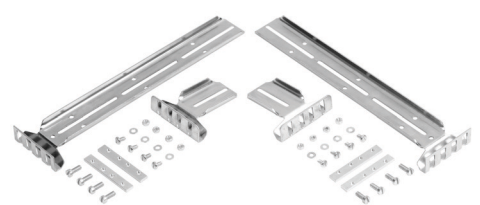
DZ63480-4
(3301, 3307, 3308)



DZ63450-4
(0201, 0204, 0301, 0305)



DZ65490-4
(3607, 5321, 5321SC)



DZ63470-4
(0305*)

63xxx	mm							
	SL	A (F)	A (R)	B (4)	B (3)	C	D	E
DZ63450-4	0201, 0204, 0301, 0305	69.9	266.7	57.2	-	15.0	6.35	12.7
DZ63460-4	0201, 0204, 0301, 0305	69.9	266.7	-	43.7	15.0	-	15.9
DZ63470-4	0305*	76.5	274.6	69.9	-	19.8 (F) 18.3 (R)	7.4	15.9
DZ63480-4	3301, 3307, 3308	114.6	114.6	-	63.5	18.3	7.4	15.2
DZ65490-4	3607, 5321, 5321SC	96.0	96.0	60.0	-	14.0	5.5	15.9
DZ63374-4	2907	77.2	153.4	-	44.2	17.5	-	15.9

* Recessed

(F) Front

(R) Rear

(4) 4 hole

(3) 3 hole

* Montage en retrait

(F) Avant

(R) Arrière

(4) 4 trous

(3) 3 trous

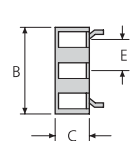
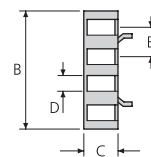
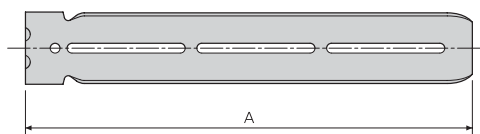
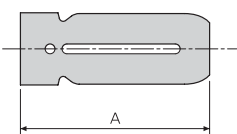
* Versetzt Montiert

(F) Vorne

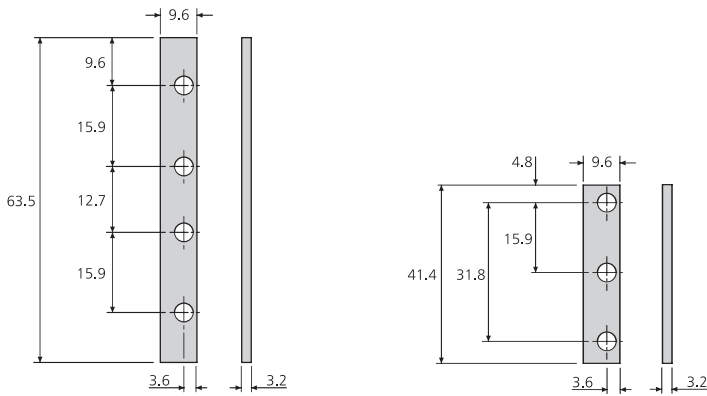
(R) Hinten

(4) 4-Loch

(3) 3-Loch



Bar nuts
Barre taraudée
Leistenmuttern



Notes:

- Each kit comprises 4 brackets, 4 bar nuts, 8 screw kits for brackets, 8 fillister head screws. Customer supplies captive nuts.

Notes:

- Chaque kit comprend 4 équerres de fixation, 4 barres taraudées, 8 boulons de fixation, 8 vis de fixation à tête cylindrique fendue. Les écrous cages ne sont pas fournis.

Hinweise:

- Jeder Satz enthält 4 Winkel, 4 Leistenmuttern, 8 Schrauben für Winkel, 8 Linsenkopfschrauben. Unverlierbare Muttern sind vom Verarbeiter zu stellen.