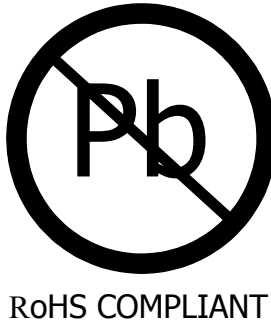
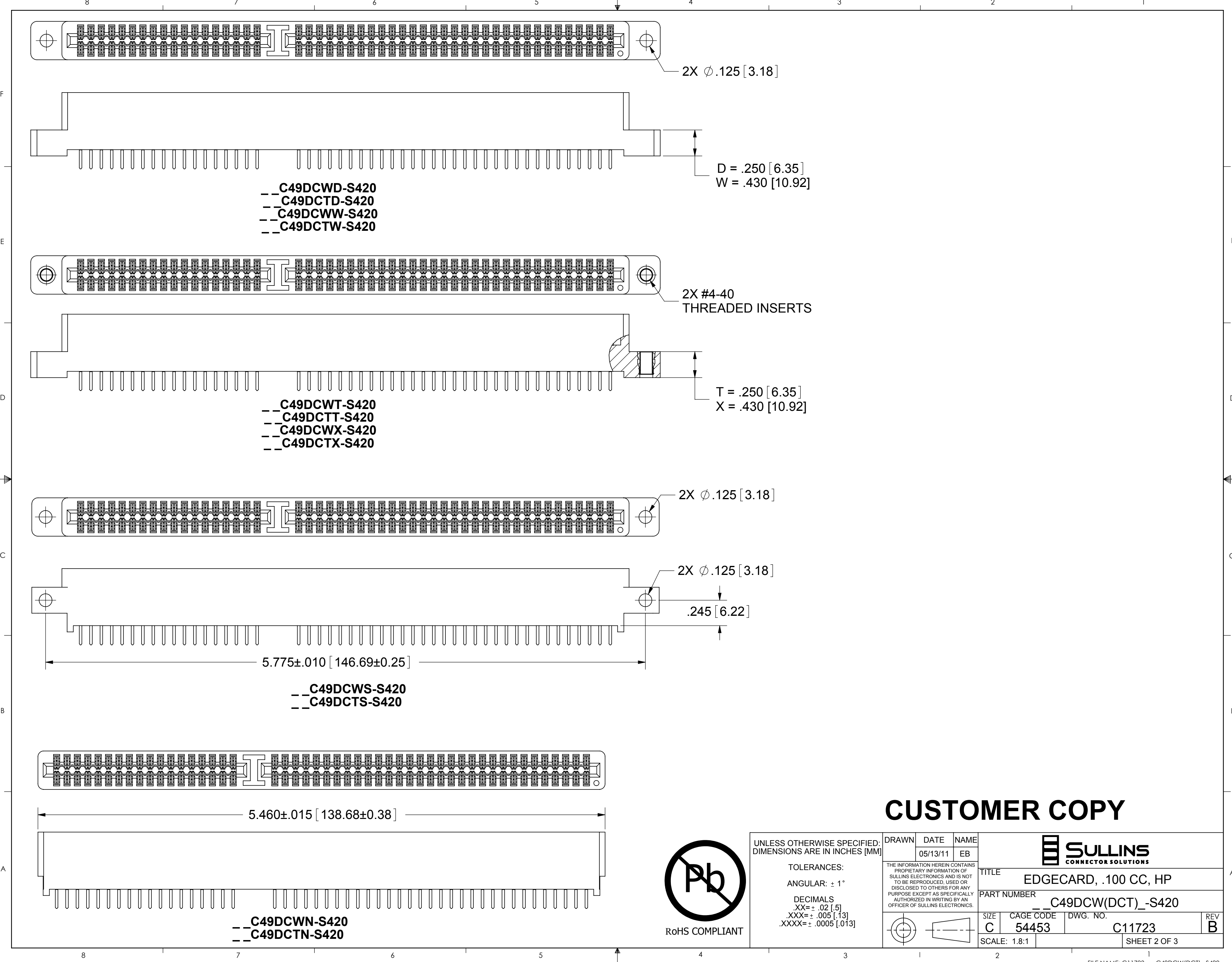


- NOTES:
- INSULATOR MATERIAL:SEE PART NUMBER CODING
 - CONTACT MATERIAL: SEE PART NUMBER CODING
 - PLATING: .SEE PART NUMBER CODING
 - OPERATING TEMPERATURE: SEE PART NUMBER CODING
 - PROCESSING TEMP: SEE PART NUMBER CODING
 - UL FLAMMABILITY RATING: 94V-0
 - OPERATING VOLTAGE: 700 VAC MINIMUM AT SEA LEVEL
 - CURRENT RATING: 3 AMP
 - CONTACT RESISTANCE: 30 MILLI OHMS MAX
 - INSULATION RESISTANCE: 5000 MEGA OHMS
 - DURABILITY: 500 CYCLES MIN
 - CONNECTOR IDENTIFICATION: THE PART SHALL BE MARKED WITH A PART NUMBER AND LOT CODE
 - BOARD THICKNESS ACCOMMODATED: .062 ±.008[1.57 ±0.20]
 - INSERTION FORCE: 16 OZ MAX PER CONTACT PAIR WHEN USING A .062[1.57] TEST BLADE
INTERNAL INSPECTION TO BE PER SULLIN'S WORK INSTRUCTION WI7.3-01
 - WITHDRAWAL FORCE: 1 OZ MIN PER CONTACT PAIR USING .062[1.57] PCB
 - MODIFICATION: FULL BODY WIDTH STANDOFFS AT ENDS,
3.200 ±.008" & 1.900 ±.008" CARDSLOTS, MOLDED SECTION BETWEEN MIDDLE OF
POSITION 32 TO MIDDLE OF POSITION 34 (LIKE MOLDED KEY)


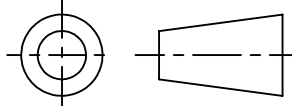


CUSTOMER COPY

UNLESS OTHERWISE SPECIFIED: DIMENSIONS ARE IN INCHES [MM]		DRAWN	DATE	NAME		
			05/13/11	EB		
TOLERANCES:		THE INFORMATION HEREIN CONTAINS PROPRIETARY INFORMATION OF SULLINS ELECTRONICS AND IS NOT TO BE REPRODUCED, USED OR DISCLOSED TO OTHERS FOR ANY PURPOSE EXCEPT AS SPECIFICALLY AUTHORIZED IN WRITING BY AN OFFICER OF SULLINS ELECTRONICS.				TITLE
ANGULAR: ± 1°						EDGECARD, .100 CC, HP
DECIMALS XX= ± .02 [.5] .XXX= ± .005 [.13] .XXXX= ± .0005 [.013]						PART NUMBER
						C49DCW(DCT)-S420
		SIZE		CAGE CODE	DWG. NO.	REV
		C		54453	C11723	B
		SCALE: 2:1		SHEET 1 OF 3		



CUSTOMER COPY

UNLESS OTHERWISE SPECIFIED: DIMENSIONS ARE IN INCHES [MM]		DRAWN	DATE	NAME		
			05/13/11	EB		
TOLERANCES: ANGULAR: $\pm 1^\circ$ DECIMALS .XX = $\pm .02 \ [.5]$.XXX = $\pm .005 \ [.13]$.XXXX = $\pm .0005 \ [.013]$		THE INFORMATION HEREIN CONTAINS PROPRIETARY INFORMATION OF SULLINS ELECTRONICS AND IS NOT TO BE REPRODUCED, USED OR DISCLOSED TO OTHERS FOR ANY PURPOSE EXCEPT AS SPECIFICALLY AUTHORIZED IN WRITING BY AN OFFICER OF SULLINS ELECTRONICS.			TITLE EDGE CARD, .100 CC, HP	
					PART NUMBER _ _ C49DCW(DCT) _ -S420	
		SIZE C	CAGE CODE 54453	DWG. NO. C11723	REV B	
		SCALE: 1.8:1		SHEET 2 OF 3		

F
E
D
C
B
A

MATERIAL (INSULATOR/ CONTACT)
E = PBT/ PHOSPHOR BRONZE
OPERATING TEMP: -65°C TO +125°C
PROCESSING TEMP: WAVE ONLY
G = PA9T/ PHOSPHOR BRONZE
OPERATING TEMP: -65°C TO +125°C
PROCESSING TEMP: 260°C FOR 20 SECS MAX
(CONSULT FACTORY FOR OTHER MATERIALS)

PART NUMBER CODING

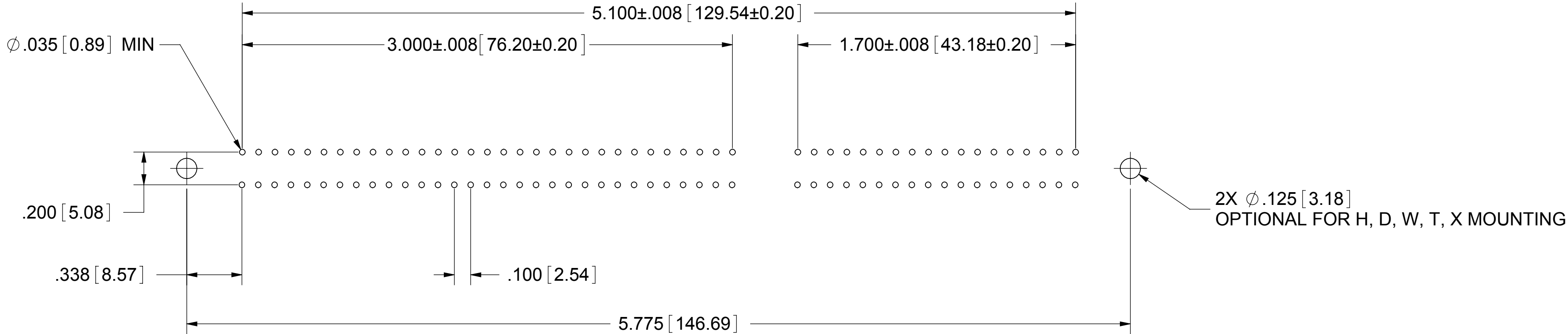
--- C49D --- -S420

MOUNTING STYLE
H = .125 DIA. CLEARANCE HOLES (PAGE 1)
S = .125 DIA. SIDE MOUNTING (PAGE 2)
N = NO MOUNTING EARS (PAGE 2)
D = FLUSH MOUNTING (PAGE 2)
W = FLUSH MOUNTING WITH INSERT (PAGE 2)
T = FLUSH MTG. WITH THREADED INSERT (PAGE 2)

TERMINATION TYPE
CW = .125" TAIL LENGTH (SEE SECTION A-A FOR DETAILS)
CT = .170" TAIL LENGTH (SEE SECTION A-A FOR DETAILS)

**NUMBER OF POSITIONS
(CONTACTS PER ROW)**

PLATING
ALL PLATINGS HAVE .000050" NICKEL UNDERPLATE
CONTACT SURFACE TERMINATION
B = .000010" GOLD .000100" PURE TIN, MATTE
C = .000030" GOLD .000100" PURE TIN, MATTE



PCB LAYOUT - COMPONENT SIDE

CUSTOMER COPY



UNLESS OTHERWISE SPECIFIED: DIMENSIONS ARE IN INCHES [MM]		DRAWN	DATE	NAME		
			05/13/11	EB		
TOLERANCES: ANGULAR: ± 1° DECIMALS .XX = ± .02 [.5] .XXX = ± .005 [.13] .XXXX = ± .0005 [.013]		THE INFORMATION HEREIN CONTAINS PROPRIETARY INFORMATION OF SULLINS ELECTRONICS AND IS NOT TO BE REPRODUCED, USED OR DISCLOSED TO OTHERS FOR ANY PURPOSE EXCEPT AS SPECIFICALLY AUTHORIZED IN WRITING BY AN OFFICER OF SULLINS ELECTRONICS.			TITLE EDGE CARD, .100 CC, HP	
					PART NUMBER __C49DCW(DCT)_-S420	
				SIZE C	CAGE CODE 54453	DWG. NO. C11723
				SCALE: 2:1		REV B
				SHEET 3 OF 3		