

MICRO SWITCH

A DIVISION OF MINNEAPOLIS-HONEYWELL REGULATOR COMPANY
 Piquette, Illinois

FED. MFR. CODE 91929

ASSEMBLY- TOGGLE SWITCH

CATALOG LISTING
13AT401-T2

13AT401-T2
 PAGE 1 OF 1

M

DRAWING
 NUMBER

8

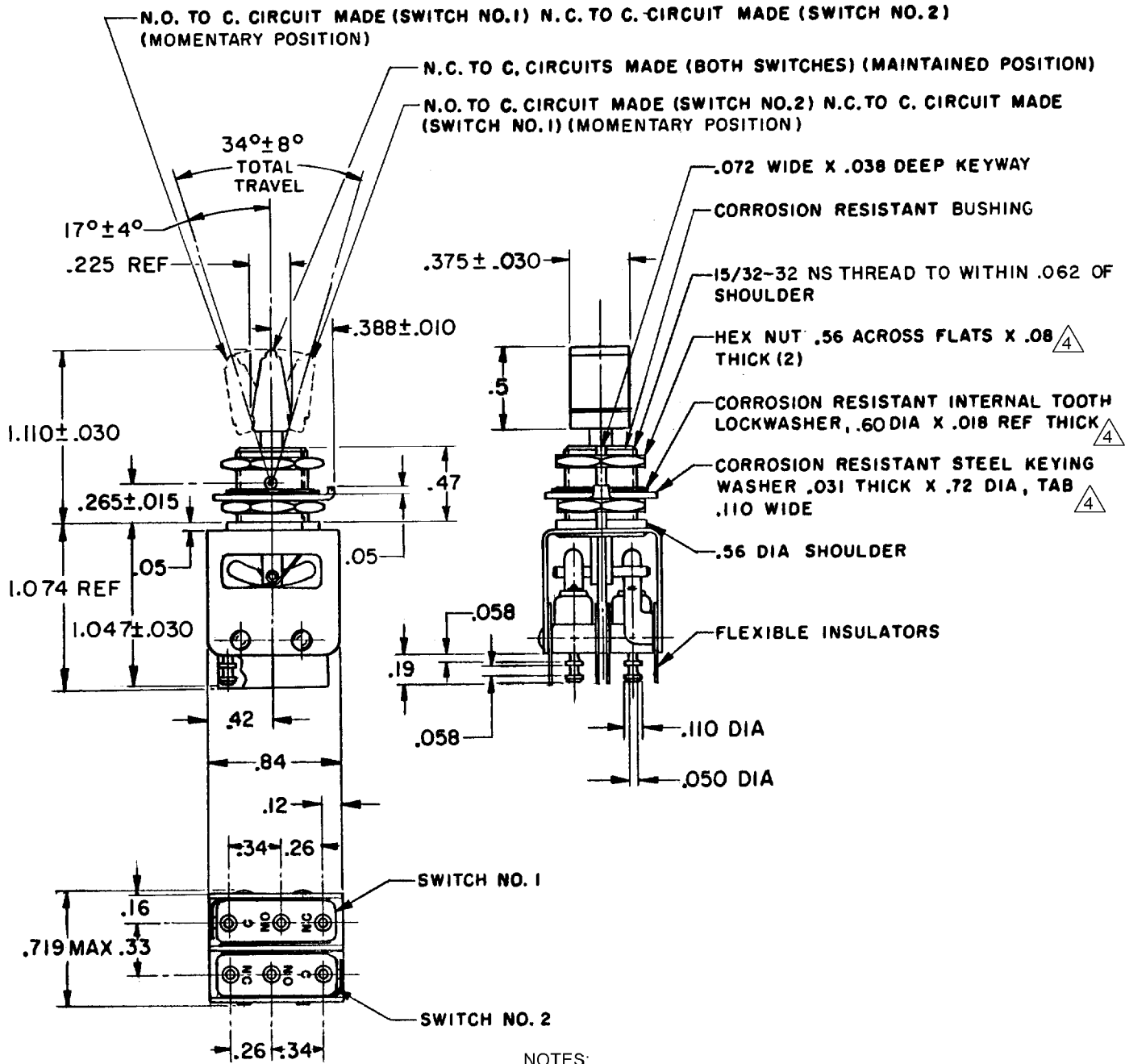
ISSUE

REVISIONS

A	CORR	15 APR 60
B	CO 19659	7 JAN 65
C	CO 50566-B	6 MAY 82
D	CO 52725	24 MAY 83
E	CO 56281	27 SEP 85
F	CO 66089	21 FEB 91
G	206069	31 JUL 02

RASTER
 FO-50378

REPLACES
 RELEASE NO. SR 8768
 CHECK
 17 FEB 60
 CHECK
 17 FEB 60
 CHECK
 17 FEB 60
 CHECK
 16 FEB 60
 CHECK
 16 FEB 60
 DRAWN
 R E R



- NOTES:
- UNIT INCLUDES CAT. LISTING 1SM1-T2 TYPE 2 BASIC SWITCH (2)
 - TERMINALS ARE PLATED FOR SOLDERING
 - KNOB PORTION OF TOGGLE LEVER BRIGHT ANODIZED
 - \triangle HARDWARE FURNISHED ASSEMBLED WITH SWITCH OR IN PACKET PER MIL-PRF-8805
 - REPLACEMENT MOUNTING HARDWARE PACKET 15PA312-AT

THIS DRAWING COVERS A PROPRIETARY ITEM AND IS THE PROPERTY OF MICRO SWITCH, A DIVISION OF MINNEAPOLIS-HONEYWELL REGULATOR CO. THIS DRAWING IS NOT TO BE COPIED OR USED WITHOUT THE APPROVAL OF MICRO SWITCH.

CHARACTERISTICS	ELECTRICAL DATA	SCALE FULL
	CONTACT ARRANGEMENT S P D T (2)	DO NOT SCALE PRINT
	250 VAC ----- 5 AMP	UNLESS OTHERWISE SPECIFIED
	30 VOLTS DC RATING	DIMENSIONS ARE IN INCHES
	INDUCTIVE ----- SEA LEVEL ----- 3 AMP	TOLERANCES ARE:
	50,000 FT. ----- 2.5 AMP	ONE PLACE (.0) ±.030
	RESISTIVE ----- SEA LEVEL ----- 5 AMP	TWO PLACE (.00) ±.015
	50,000 FT. ----- 5 AMP	THREE PLACE (.000) ±.008
	MAXIMUM INRUSH ----- 24 AMP	ANGLES ±
		WEIGHT .06 LB APPROX