

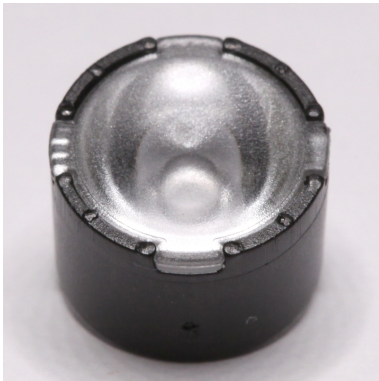
## Lisa2 Lisa2-Pin-OSL series



<b>Ordering number</b>	<b>FA11001</b>		
<b>Description</b>	<b>FA11001_Lisa2-M-Pin-OSL</b>		
Family	Lisa2	FWHM	23 degrees
Type	Assembly	Efficiency	90
LED	Oslon SSL 80	cd/lm	-
Color	Black	Gerber File	Available
Diameter	9.9 mm		
Height	7 mm		
Style	Round		
Optic Material	PMMA		
Holder Material	PC		
Fastening	Tape, glue		
Status	Ready		



<b>Ordering number</b>	<b>FA11002</b>		
<b>Description</b>	<b>FA11002_Lisa2-W-Pin-OSL</b>		
Family	Lisa2	FWHM	31 degrees
Type	Assembly	Efficiency	90
LED	Oslon SSL 80	cd/lm	-
Color	Black	Gerber File	Available
Diameter	9.9 mm		
Height	7 mm		
Style	Round		
Optic Material	PMMA		
Holder Material	PC		
Fastening	Tape, glue		
Status	Ready		

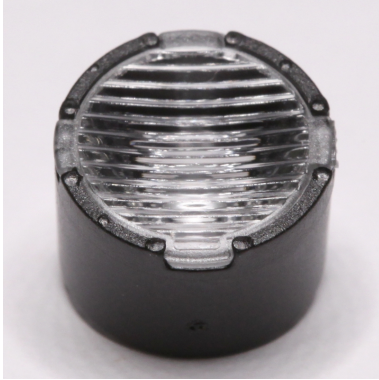


<b>Ordering number</b>	<b>FA11003</b>		
<b>Description</b>	<b>FA11003_Lisa2-WW-Pin-OSL</b>		
Family	Lisa2	FWHM	degrees
Type	Assembly	Efficiency	-
LED	Oslon SSL 80	cd/lm	-
Color	Black	Gerber File	Available
Diameter	9.9 mm		
Height	7 mm		
Style	Round		
Optic Material	PMMA		
Holder Material	PC		
Fastening	Glue, tape		
Status	Ready		

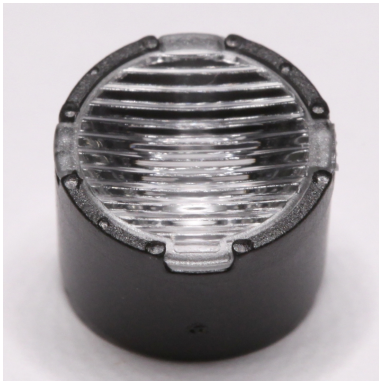


<b>Ordering number</b>	<b>FA11047</b>		
<b>Description</b>	<b>FA11047_Lisa2-RS-Pin-OSL</b>		
Family	Lisa2	FWHM	16 degrees
Type	Assembly	Efficiency	89
LED	Oslon SSL 80	cd/lm	-
Color	Black	Gerber File	Available
Diameter	9.9 mm		
Height	7 mm		
Style	Round		
Optic Material	PMMA		
Holder Material	PC		
Fastening	Tape, glue		
Status	Ready		

## Lisa2 Lisa2-Pin-OSL series



<b>Ordering number</b>	<b>FA11124</b>		
<b>Description</b>	<b>FA11124_Lisa2-O-Pin-OSL</b>		
Family	Lisa2	FWHM	48+19 degrees
Type	Assembly	Efficiency	78
LED	Oslon SSL 80	cd/lm	-
Color	Black	Gerber File	Available
Diameter	9.9 mm		
Height	7 mm		
Style	Round		
Optic Material	PMMA		
Holder Material	PC		
Fastening	Tape, glue		
Status	Ready		



<b>Ordering number</b>	<b>FA11852</b>		
<b>Description</b>	<b>FA11852_Lisa2-O-90-Pin-OSL</b>		
Family	Lisa2	FWHM	48+19 degrees
Type	Assembly	Efficiency	-
LED	Oslon SSL 80	cd/lm	-
Color	Black	Gerber File	Available
Diameter	9.9 mm		
Height	7 mm		
Style	Round		
Optic Material	PMMA		
Holder Material	PC		
Fastening	Glue, tape		
Status	Ready		



<b>Ordering number</b>	<b>FA11957</b>		
<b>Description</b>	<b>FA11957_Lisa2-WWW-Pin-OSL</b>		
Family	Lisa2	FWHM	degrees
Type	Assembly	Efficiency	-
LED	Oslon SSL 80	cd/lm	-
Color	Black	Gerber File	Available
Diameter	9.9 mm		
Height	7 mm		
Style	Round		
Optic Material	PMMA		
Holder Material	PC		
Fastening	Glue, tape		
Status	Ready		