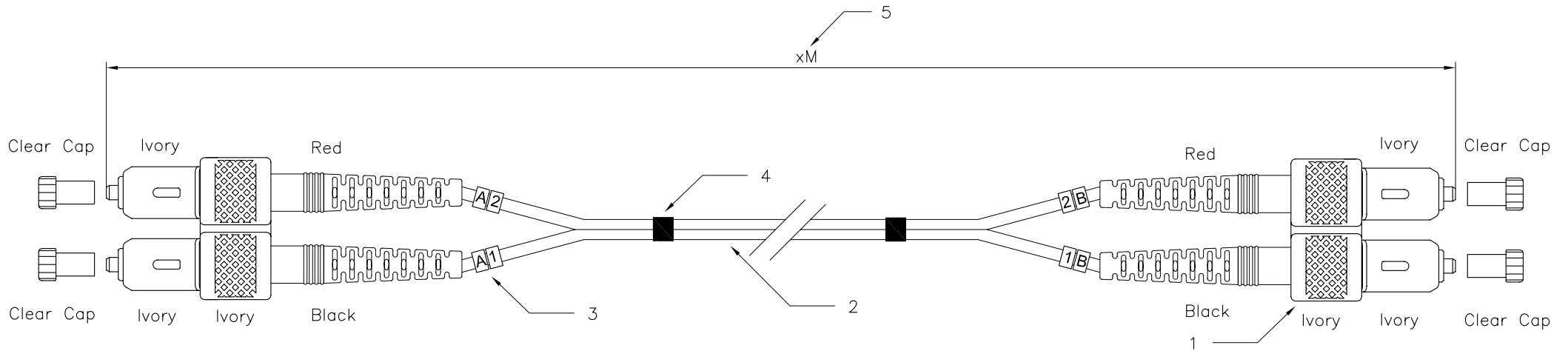


| Part No. | (5)Length | Part No. | (5)Length |
|----------|-----------|----------|-----------|
| 3603-1 | 1M | 3603-5 | 5M |
| 3603-2 | 2M | 3603-10 | 10M |
| 3603-3 | 3M | 3603-15 | 15M |



Specification:

1. Connector Type : II SC/PC Multimode
2. Cable Type :
2-1 Zipcord cable, $\phi 3.0\text{mm}$, 50/125um Multimode,
2-2 Calbe Jacket : Orange color, LSZH material
3. Cable Marker
4. Shrink Tube
5. Length : xM

Performance:

- a. Insertion Loss : $< 0.5 \text{ dB}$
- b. Fiber Extention : $-0.05\mu\text{m} < H < +0.05\mu\text{m}$
- c. Ferrule End-face Radius : $10 < R < 25\text{mm}$
- d. Apex Offset : $< 50\mu\text{m}$
- e. Increase in insertion loss after 500 mating : 0.2 dB Max.
- f. Operation Temperature : $-20^\circ \text{ to } +70^\circ$
- g. Storage Temperature : $-40^\circ \text{ to } +80^\circ$

RoHS Compliant

| | | | | |
|-----------------|------------------|------|-------------|----------------------------|
| | DSGN | CSQ | 30.MAY.2007 | ITEM NO: 3603 |
| | CHK | Maer | 30.MAY.2007 | |
| UNIT | M/M | APPR | Yty | SC to SC Duplex patch cord |
| SCALE | 1/1 | | | |
| DWG NO: 3603 | Videk Ltd | | | |