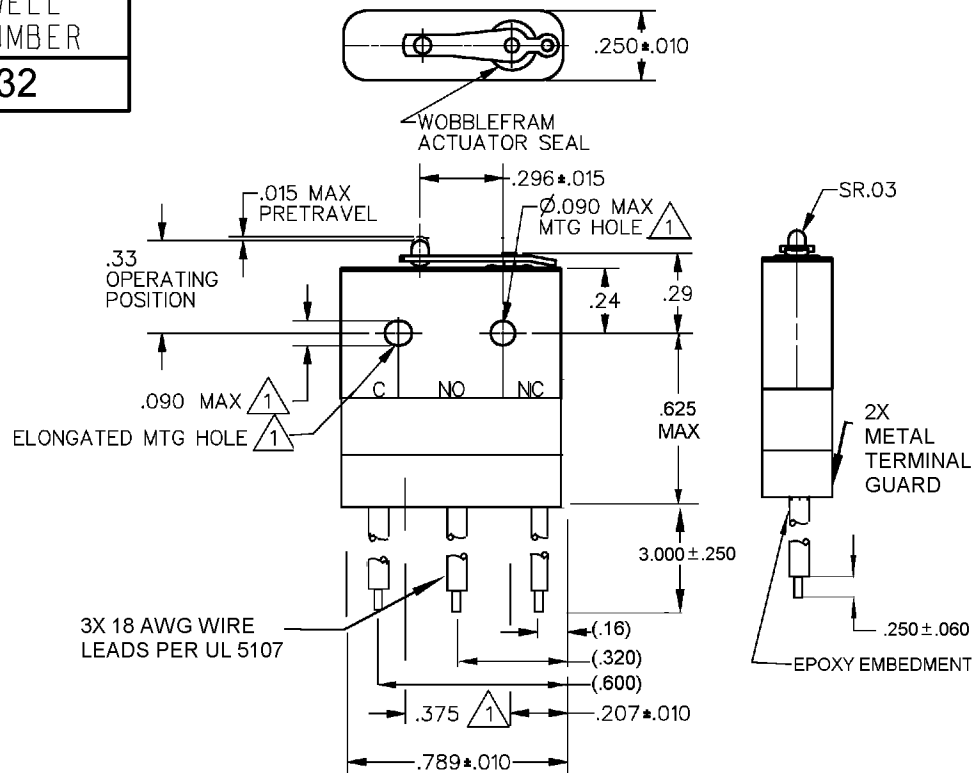


HONEYWELL
PART NUMBER

56HM32

REV	DOCUMENT	CHANGED BY	CHECK
A	0037763	VS 27FEB08	BLR



CHARACTERISTICS

OPERATING FORCE — — — 7 OZ MAX
 RELEASE FORCE — — — 1 OZ MIN
 DIFFERENTIAL TRAVEL — — — .006 MAX
 OVERTRAVEL — — — .003 MIN

NOTES

- 1 MOUNTING HOLES WILL ACCEPT PINS OR SCREWS OF $\varnothing .087$ ON $.375 \pm .002$ CENTERS
 2 — FOR USE IN TEMPERATURE RANGE -85°F TO $+750^{\circ}\text{F}$
 3 — SWITCH IS HERMETICALLY SEALED PER ENCLOSURE DESIGN SYMBOL 5 MIL-PRF-8805/8
 4 — ALL EXPOSED PARTS ARE OF CORROSION RESISTANT MATERIALS
 5 — DO NOT APPLY MORE THAN 1 1/2 INCH LBS OF TORQUE WHEN TIGHTENING MOUNTING SCREWS
 6 — CONTACT MATERIALS ARE SILVER OR SILVER ALLOY
 7 ELECTRICAL LIFE AT MAXIMUM RATED TEMPERATURE AND MAXIMUM RATED LOAD IS 1500 OPERATIONS MINIMUM
 8 — DIELECTRIC WITHSTANDING VOLTAGE 500vrms

ELECTRICAL DATA 7

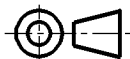
CONTACT ARRANGEMENT
S P D T

LINE VOLTAGE	INDUCTIVE LOAD	RESISTIVE LOAD
28 VDC	1 AMP	1 AMP
115 VAC (400Hz)	1 AMP	1 AMP

DESIGN UNITS: INCH
 TOLERANCES UNLESS NOTED:

NO PLACE	X	±	0.040
ONE PLACE	.X	±	0.030
TWO PLACE	.XX	±	0.015
THREE PLACE	.XXX	±	0.005
FOUR PLACE	.XXXX	±	
ANGLES		±	

THIRD ANGLE PROJECTION



DRAWN	VS	27FEB08
CHECK	BLR	27FEB08

THIS DRAWING COVERS A PROPRIETARY ITEM
 AND IS THE PROPERTY OF HONEYWELL.
 THIS DRAWING IS NOT TO BE COPIED OR USED
 WITHOUT THE PERMISSION OF HONEYWELL.

INTERPRET PER ANSI Y14.5M-1982
 OTHER HONEYWELL ENGINEERING
 STANDARDS MAY APPLY

RASTER

Honeywell

TITLE

SWITCH — BASIC

SIZE	TYPE	DRAWING NAME	REV
A	I	56HM32	A
SCALE	--	WEIGHT 1.5 OZ MAX.	SHEET 1 OF 1