

Base strip - MC 1,5/10-GF-3,5 - 1843871

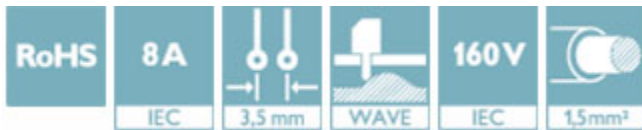
Please be informed that the data shown in this PDF Document is generated from our Online Catalog. Please find the complete data in the user's documentation. Our General Terms of Use for Downloads are valid (<http://phoenixcontact.com/download>)

Header, Nominal current: 8 A, Rated voltage (III/2): 160 V, Number of positions: 10, Pitch: 3.5 mm, Color: green, Contact surface: Tin, Mounting: Wave soldering



Why buy this product

- ✓ Well-known mounting principle allows worldwide use
- ✓ Screwable flange for superior mechanical stability
- ✓ Maximum flexibility when it comes to device design – one header for connectors with different connection technologies



Key Commercial Data

Packing unit	1 STK
GTIN	 4 017918 112981
GTIN	4017918112981
Weight per Piece (excluding packing)	3.610 g
Custom tariff number	85366990
Country of origin	Germany

Technical data

Dimensions

Length	9.2 mm
Pitch	3.50 mm
Dimension a	31.5 mm
Width	45.35 mm
Constructional height	7.25 mm
Height	10.65 mm
Length of the solder pin	3.4 mm

Base strip - MC 1,5/10-GF-3,5 - 1843871

Technical data

Dimensions

Pin dimensions	0,8 x 0,8
Hole diameter	1.2 mm

General

Range of articles	MC 1,5/...-GF
Insulating material group	IIIa
Rated surge voltage (III/3)	2.5 kV
Rated surge voltage (III/2)	2.5 kV
Rated surge voltage (II/2)	2.5 kV
Rated voltage (III/3)	160 V
Rated voltage (III/2)	160 V
Rated voltage (II/2)	250 V
Connection in acc. with standard	EN-VDE
Nominal current I _N	8 A
Maximum load current	8 A
Insulating material	PBT
Flammability rating according to UL 94	V0
Color	green
Number of positions	10

Standards and Regulations

Connection in acc. with standard	EN-VDE
	CSA
Flammability rating according to UL 94	V0

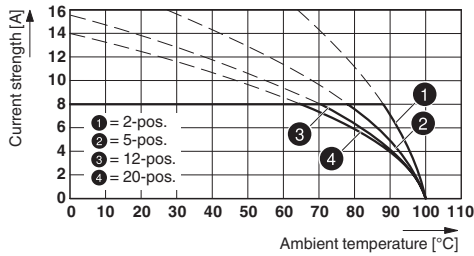
Environmental Product Compliance

China RoHS	Environmentally Friendly Use Period = 50
	For details about hazardous substances go to tab "Downloads", Category "Manufacturer's declaration"

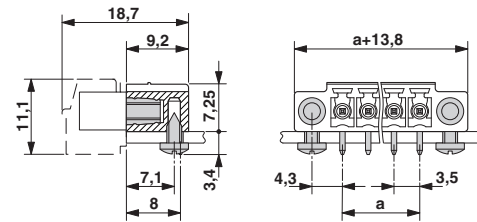
Drawings

Base strip - MC 1,5/10-GF-3,5 - 1843871

Diagram

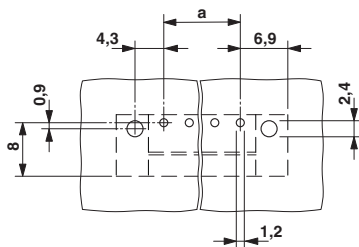


Dimensional drawing

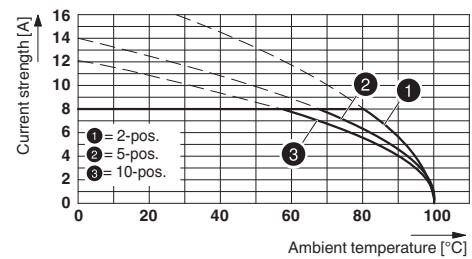


Type: FK-MCP 1,5/...-STF-3,5 with MC 1,5/...-GF-3,5

Drilling diagram

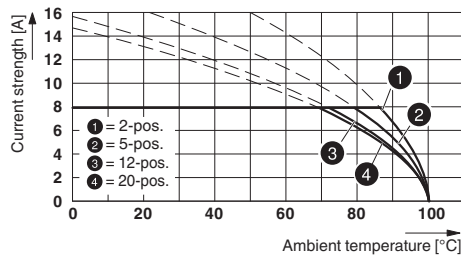


Diagram



Type: TFMC 1,5/...-STF-3,5 with MC 1,5/...-GF-3,5

Diagram



Diagram

Type: MC 1,5/...-STF-3,5 with MC 1,5/...-GF-3,5

Diagram

Approvals

Approvals

Approvals


CSA / VDE Gutachten mit Fertigungsüberwachung / IEC60364 CB Scheme / CCA / cULus Recognized / EAC

Base strip - MC 1,5/10-GF-3,5 - 1843871


Approvals

Ex Approvals


Approval details

CSA  <http://www.csagroup.org/services/testing-and-certification/certified-product-listing/13631>

	B	D
Nominal current I _N	8 A	8 A
Nominal voltage U _N	300 V	300 V

VDE Gutachten mit Fertigungsüberwachung  <http://www.vde.com/en/Institute/OnlineService/VDE-approved-products/Pages/Online-Search.aspx40011723>

Nominal current I _N	8 A
Nominal voltage U _N	160 V

IECEE CB Scheme  <http://www.iecee.org/DE1-56063-B1B2>

Nominal current I _N	8 A
Nominal voltage U _N	160 V

CCA CCA/ DE1 34219

Nominal current I _N	8 A
Nominal voltage U _N	160 V

cULus Recognized <http://database.ul.com/cgi-bin/XYV/template/LISEXT/1FRAME/index.htm> E60425-20110128

	B	D
Nominal current I _N	8 A	8 A
Nominal voltage U _N	300 V	300 V

EAC B.01742

