

## Panel feed-through - QPD W 4PE1,5 5-10 M25 0,5 BK - 1414730

Please be informed that the data shown in this PDF Document is generated from our Online Catalog. Please find the complete data in the user's documentation. Our General Terms of Use for Downloads are valid (<http://phoenixcontact.com/download>)



Panel feed-through, QUICKON connection, number of positions: 4+PE, 0.5 mm² ... 1.5 mm², 690 V, 17.5 A, black, with QUICKON nut, cable diameter range: 5 mm ... 10 mm, assembly thread: M25, Single wires, 1.5 mm², cable length: 0.5 m

### Why buy this product

- ✓ Innovative and time saving - QUICKON fast connection for time saving of up to 80 % for on-site connection
- ✓ Convenient: quick and easy assembly without special tools
- ✓ Robust throughout: housing with IP68/IP69K and IK07 protection for a wide range of applications
- ✓ Safer connection thanks to polarization against mismatching and touch-proof protection according to DIN EN 0105
- ✓ Efficient - by using panel feed-throughs, devices no longer need to be opened in order to connect cables

RoHS

### Key Commercial Data

Packing unit	1 STK
GTIN	 4 055626 033419
GTIN	4055626033419
Weight per Piece (excluding packing)	80.000 g
Custom tariff number	85444290
Country of origin	Poland

### Technical data

#### General

Type	QPD 5x1,5
Length of cable	0.5 m
Color	black
Locking type	Screw locking
Connection method	QUICKON connection

# Panel feed-through - QPD W 4PE1,5 5-10 M25 0,5 BK - 1414730

## Technical data

### General

	IDC connection
Number of positions	5
Note number of positions	4+PE
Tightening torque, union nut	8 Nm
Tightening torque, counter nut	5 Nm
Number of connections	10
Conductor cross section flexible min.	0.5 mm <sup>2</sup>
Conductor cross section flexible max.	1.5 mm <sup>2</sup>
Conductor cross section solid min.	0.5 mm <sup>2</sup>
Conductor cross section solid max.	1.5 mm <sup>2</sup>
Conductor cross section AWG min.	20
Conductor cross section AWG max.	16

### Cabel

Structure of individual litz in acc. with VDE 0295 / smallest wire diameter	VDE 0295 class 1 to 6/min. 0.15 mm
Wire insulation material	PVC/PE/TPE/rubber
Wire diameter including insulation	1.6 mm ... 3 mm
External cable diameter	5 mm ... 10 mm
Conductor cross section	1.5 mm <sup>2</sup>
Position marking	1, 2, 3, N, PE
Wire colors	black, brown, gray, blue, green/yellow

### Ambient conditions

Degree of protection	IP66
	IP68 (2 m / 24 h)
	IP69K
Ambient temperature (operation)	-40 °C ... 100 °C
Ambient temperature (storage/transport)	-40 °C ... 100 °C
Temperature when conductor connected	-5 °C ... 50 °C

### Electrical characteristics

Nominal current I <sub>N</sub>	17.5 A
Rated current	17.5 A
Rated voltage (III/3)	690 V
Rated voltage (III/2)	1000 V
Rated voltage (II/2)	1000 V
Rated surge voltage (III/3)	6 kV
Rated surge voltage (III/2)	8 kV
Rated surge voltage (II/2)	8 kV

## Panel feed-through - QPD W 4PE1,5 5-10 M25 0,5 BK - 1414730

### Technical data

#### Mechanical characteristics

QUICKON connectability	max. 10
Category of shock impact	IK07

#### Material data

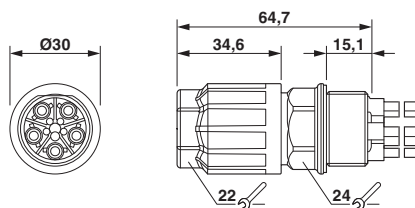
Contact material	Cu
Contact surface material	silver-plated
Contact carrier material	PA
Insulating material	PA
Flammability rating according to UL 94	V0
Overvoltage category	III
Degree of pollution	3

#### Standards and Regulations

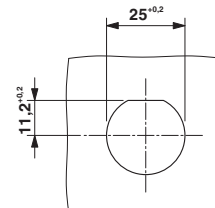
Flammability rating according to UL 94	V0
--	----

### Drawings

Dimensional drawing



Dimensional drawing



Panel cutout

### Classifications

#### eCl@ss

eCl@ss 5.1	27143424
eCl@ss 6.0	27143424
eCl@ss 8.0	27440602
eCl@ss 9.0	27440602

#### ETIM

ETIM 5.0	EC002566
ETIM 6.0	EC002061

## Panel feed-through - QPD W 4PE1,5 5-10 M25 0,5 BK - 1414730

### Classifications

#### UNSPSC

UNSPSC 13.2	39121413
-------------	----------

### Approvals

#### Approvals


#### Approvals


GL / VDE approval of drawings / IECEE CB Scheme

#### Ex Approvals

### Approval details

GL		<a href="http://exchange.dnv.com/tari/">http://exchange.dnv.com/tari/</a>	6195914 HH
----	---	---	------------

VDE approval of drawings		<a href="http://www.vde.com/en/Institute/OnlineService/VDE-approved-products/Pages/Online-Search.aspx">http://www.vde.com/en/Institute/OnlineService/VDE-approved-products/Pages/Online-Search.aspx</a>	40029149
mm²/AWG/kcmil	0.5-1.5		
Nominal current I <sub>N</sub>	17.5 A		
Nominal voltage U <sub>N</sub>	690 V		

IECEE CB Scheme		<a href="http://www.iecee.org/">http://www.iecee.org/</a>	DE1-58228
-----------------	---	---	-----------

### Accessories

#### Accessories

#### Coding element

## Panel feed-through - QPD W 4PE1,5 5-10 M25 0,5 BK - 1414730

### Accessories

Coding profile - CP-QPD 5X1,5 - 1414760



Coding profile red, for pushing into the QUICKON dome and connector, can be positioned in 90° steps.

---

### Mounting material

Nut - Q-MU M25 - 1640715



Nut (plastic) to lock the contact carrier from the inside of the device

---

### Protective cap

Protective cap - QPD QSK 5X1,5 - 1414758



Protective cap plastic, for QPD-QUICKON connection 5x 1.5 mm², IP50

---

Protective cap - QPD QSK BK 5X1,5 FS - 1414728



Protective cap, plastic, for QUICKON connection, black, with retaining cord, IP68

---

### Sealing plugs

## Panel feed-through - QPD W 4PE1,5 5-10 M25 0,5 BK - 1414730

### Accessories

Closing cap - SEALING PLUG 7X16 RD - 1400255



Closing cap

---

### Socket spanner

Socket wrench - QSS 22 - 1670206



Allen wrench, for loosening and fastening the QUICKON union nut, WAF 22 mm