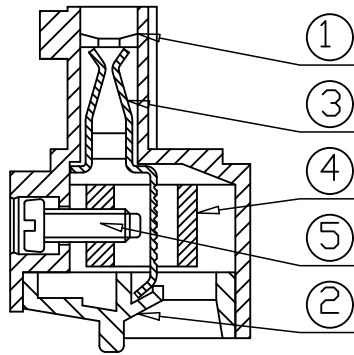
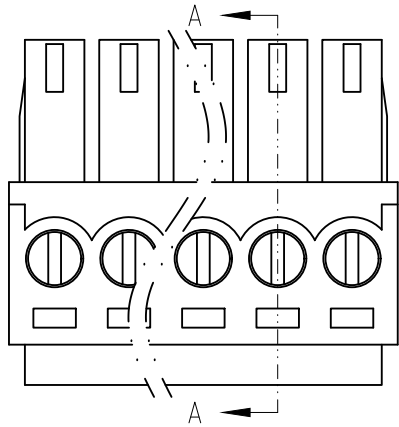
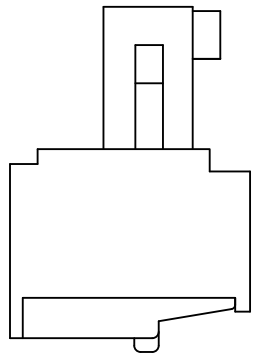
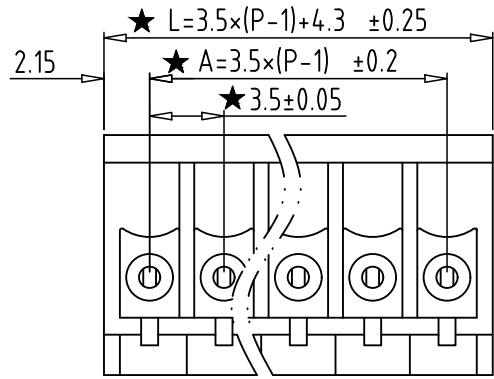


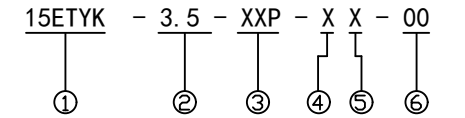
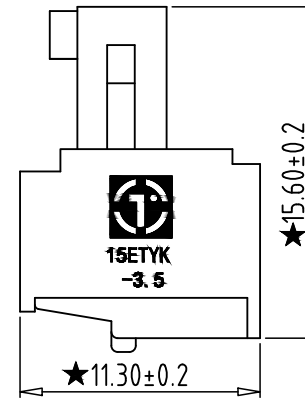
REV	CONTENT	CHK	DATE
V0.0	CONTENT	YL	22.11.21

Electrical :

- |  |                |                        |
|--|----------------|------------------------|
|  | UL             | IEC                    |
| 1. Rated Voltage :                       | 300V           | 250V                   |
| 2. Rated Current :                       | 8A             | 7A                     |
| 3. Torque Value :                        | M2 , 1.77Lb.in | M2 , 0.2N.m            |
| 4. Wire Range:                           | 28-16AWG       | 0.5-1.5mm <sup>2</sup> |
| 5. Stripping Length :                    | 6-7mm          |                        |
| 6. Withstanding Voltage :                | AC1600V/1Min.  |                        |
| 7. Operating Temperature :               | -40°C~+105°C   |                        |
| 8. RoHS Compliance                       |                |                        |
| 9. "★" is the key quality control point. |                |                        |



SECTION A-A



- ① Series NO.
- ② Pitch
- ③ Poles
- ④ 1 Single Pitch  
2 Double Pitch
- ⑤ Color: 1 Grey  
2 Blue  
3 Black  
4 Green  
5 Orange  
6 Red  
7 Transparent  
8 Yellow  
9 White

⑥ Customer Request: 00--Standard

5	SCREW	XX	P	STEEL	Zn Plated
4	BLOCK	XX	P	BRASS	Ni Plated
3	CLAMP	XX	P	PHOSPHOR BRONZE	Ni Plated
2	COVER	XX	1	PA66 UL94V-0	SEE NOTE
1	HOUSING	XX	1	PA66 UL94V-0	SEE NOTE
ITEM	NAME OF PART	NO. OF PART	Q'TY	MATERIAL	NOTE
DWG.	YL	DATE	22.11.21	SIZE	A4 UNITS mm SHEET/OF 1 / 1
CHK.	DATE			SCALE	1:1
APP.	DATE			NAME	15ETYK-3.5-XXP-XX-00
拓宜(上海)工控电器设备有限公司 Topone(Shanghai) Industrial Control Electrical Equipment Co., LTD.				DWGNO.	XXXX

Total Pitch Tolerances in mm										Nominal dimension range in mm										⊥		≡		-		//	
over	over	over	over	over	over	over	over	over	over	over	over	over	over	over	over	over	over	over	over	0	over	0	over	0	over	0	over
0	30	53	70	90	115	150	250	350		0	30	53	70	90	115	150	200	250	320	0	10	0	100	0	100	0	150
to	to	to	to	to	to	to	to	to		to	to	to	to	to	to	to	to	to	to		to		to		to		
30	53	70	90	115	150	250	350	500		30	53	70	90	115	150	200	250	320	10		100		100		150		
±0.18	±0.20	±0.25	±0.3	±0.35	±0.44	±0.60	±0.70	±0.85	±0.20	±0.25	±0.30	±0.35	±0.44	±0.55	±0.70	±0.80	±0.90		0.2	0.3	0.3	0.2	0.3	0.5			