

**MICRO SWITCH**

FREEPORT ILLINOIS, U.S.A.  
A DIVISION OF HONEYWELL

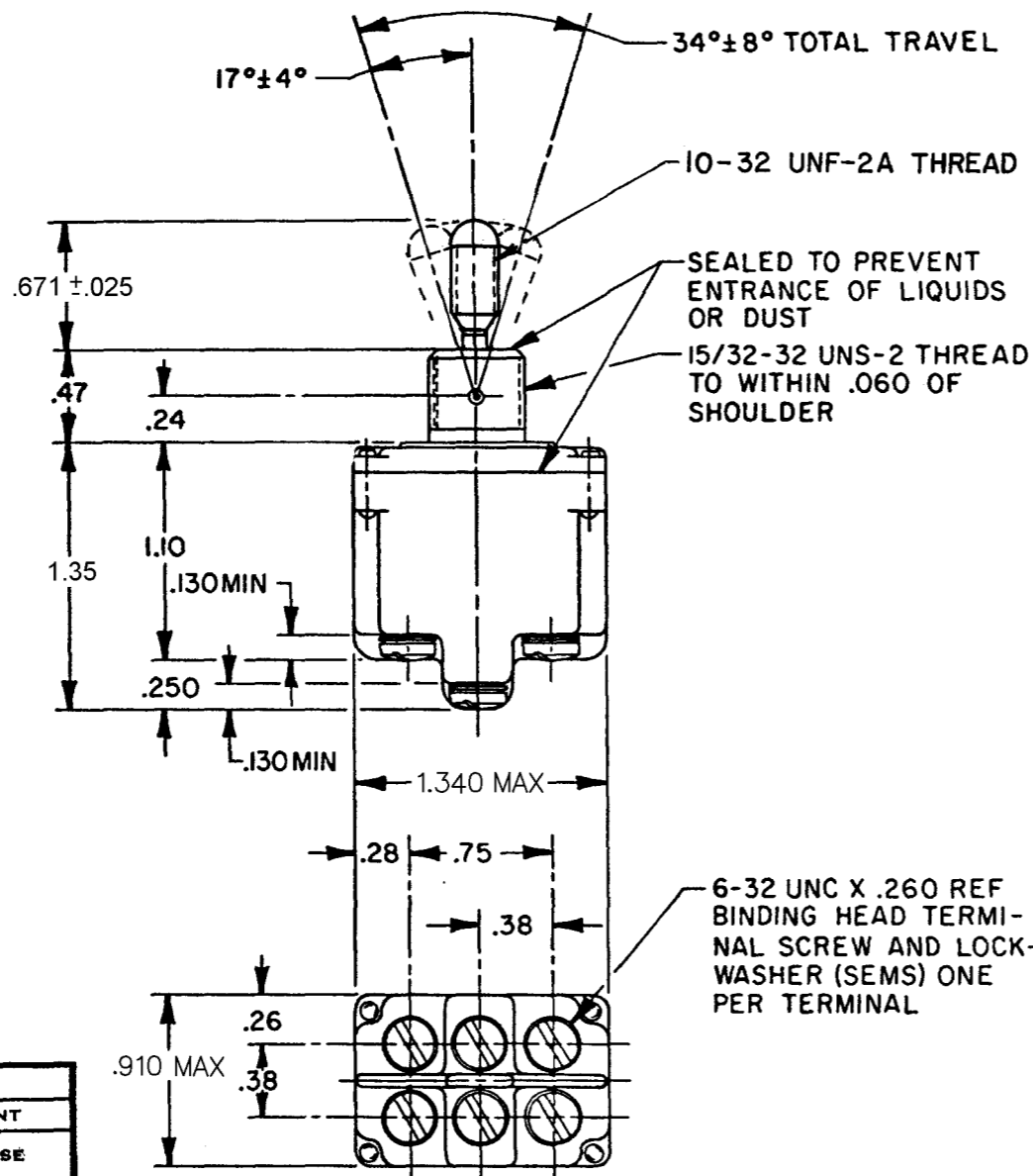
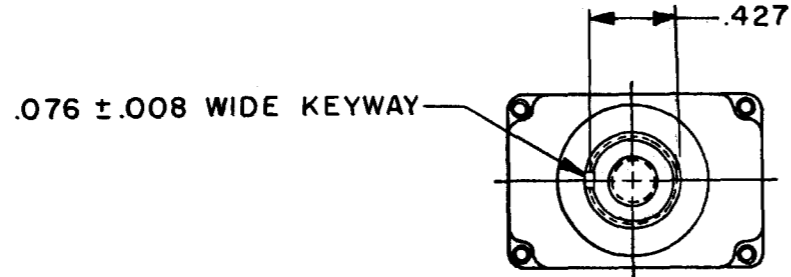
FED. MFG. CODE 91929

**SWITCH-TOGGLE**

CATALOG LISTING  
**2TL57 SERIES**

**CHART 1**

THIS DRAWING COVERS A PROPRIETARY ITEM AND IS THE PROPERTY OF MICRO SWITCH, A DIVISION OF HONEYWELL. THIS DRAWING IS NOT TO BE COPIED OR USED WITHOUT THE APPROVAL OF MICRO SWITCH.



**CIRCUIT MADE WITH TOGGLE LEVER IN**

CATALOG LISTING

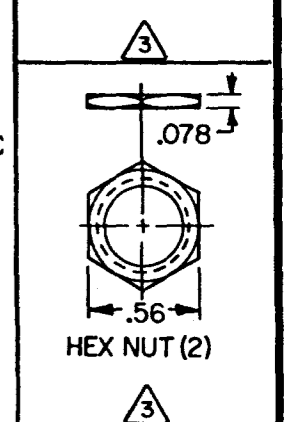
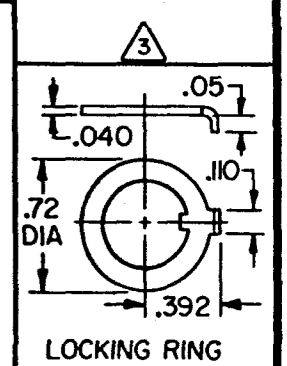
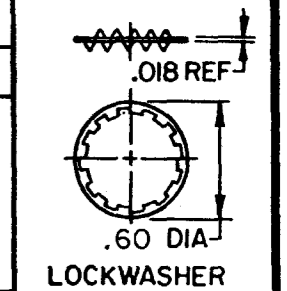
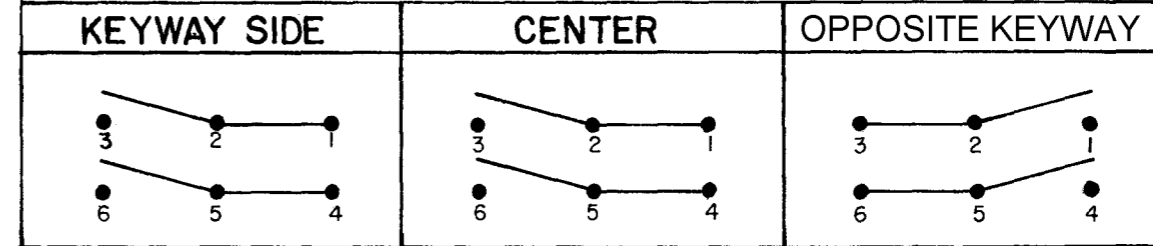
KEYWAY SIDE (1-2,4-5)	CENTER (1-2,4-5)	OPPOSITE KEYWAY (2-3,5-6)
ON	OFF	ON
OFF	NONE	ON
ON	NONE	ON
NONE	OFF	ON
NONE	ON	ON
MOM OFF	NONE	ON
MOM ON	OFF	ON
MOM ON	NONE	OFF
MOM ON	OFF	MOM ON
MOM ON	NONE	ON
NONE	ON	MOM ON
MOM ON	OFF	NONE

**MILITARY RATING (AMPS)**

RESISTIVE LOAD					LAMP LOAD		INDUCTIVE LOAD	
DC VOLTS	AC VOLTS	DC VOLTS	AC VOLTS	DC VOLTS	AC VOLTS	DC VOLTS	AC VOLTS	
28	125	250	125	250	28	125	28	125
VDC	VAC	VDC	VAC	VDC	VDC	VAC	VDC	VAC

2TL57-1	ON	OFF	ON								
2TL57-2	OFF	NONE	ON								
Ⓢ	ON	NONE	ON	20	.75	.5	15	6	7	4	15
2TL57-21	NONE	OFF	ON	(REFER TO L191 FOR UL RATING)							
2TL57-31	NONE	ON	ON								
2TL57-4	MOM OFF	NONE	ON								
2TL57-5	MOM ON	OFF	ON								
2TL57-6	MOM ON	NONE	OFF								
2TL57-7	MOM ON	OFF	MOM ON	18	.75	.5	11	6	5	2	10
2TL57-8	MOM ON	NONE	ON	(REFER TO L192 FOR UL RATING)							
2TL57-51	NONE	ON	MOM ON								
2TL57-61	MOM ON	OFF	NONE								

**CIRCUIT DIAGRAM**



- NOTES**
- SWITCHES ARE CAPABLE OF WITHSTANDING A TEMPERATURE OF 160°F CONTINUOUSLY AT FULL RATED LOAD
  - CIRCUIT DESIGNATION AND MICRO SWITCH CATALOG LISTING MARKED ON SIDE OF SWITCH
  - FURNISHED UNASSEMBLED
  - FOR TERMINAL COVER SEE MICRO SWITCH CATALOG LISTING 5PA8
  - APPLIES ONLY TO "ON" AND "MOMENTARY ON" POSITIONS

CATALOG LISTING  
**M 2TL57 SERIES CHART 1**  
 PAGE 1 OF 1  
 ISSUE 10  
 REVISIONS:  
 A RE-INST PR-10166 06 FEB 04  
 B CO 49791  
 C CO-50496  
 D CO-59379  
 E CO 78047  
 F CO-95307  
 G 0000771  
 H 0001639  
 J 0003037  
 TSG 06 FEB 04  
 DRAWN 5 MAY 81  
 CHECK GWH 11 MAY 81  
 RASTER FO-52851-A  
 DRAWN 5 MAY 81  
 CHECK JEF

SCALE FULL  
DO NOT SCALE PRINT  
UNLESS OTHERWISE NOTED  
DIMENSIONS ARE IN INCHES  
**TOLERANCES ARE:**  
 ONE PLACE (.0) ±.030  
 TWO PLACE (.00) ±.015  
 THREE PLACE (.000) ±.005  
 ANGLES ±.005  
 WEIGHT

15A-125, 250 OR 277VAC 1/2HP-125VAC; 1HP-250, 277VAC 5A-125VAC "L" CODE L191	10A-125, 250 OR 277VAC 1/4HP-125VAC; 1/2HP-250, 277VAC 3A-125VAC "L" CODE L192
--	--