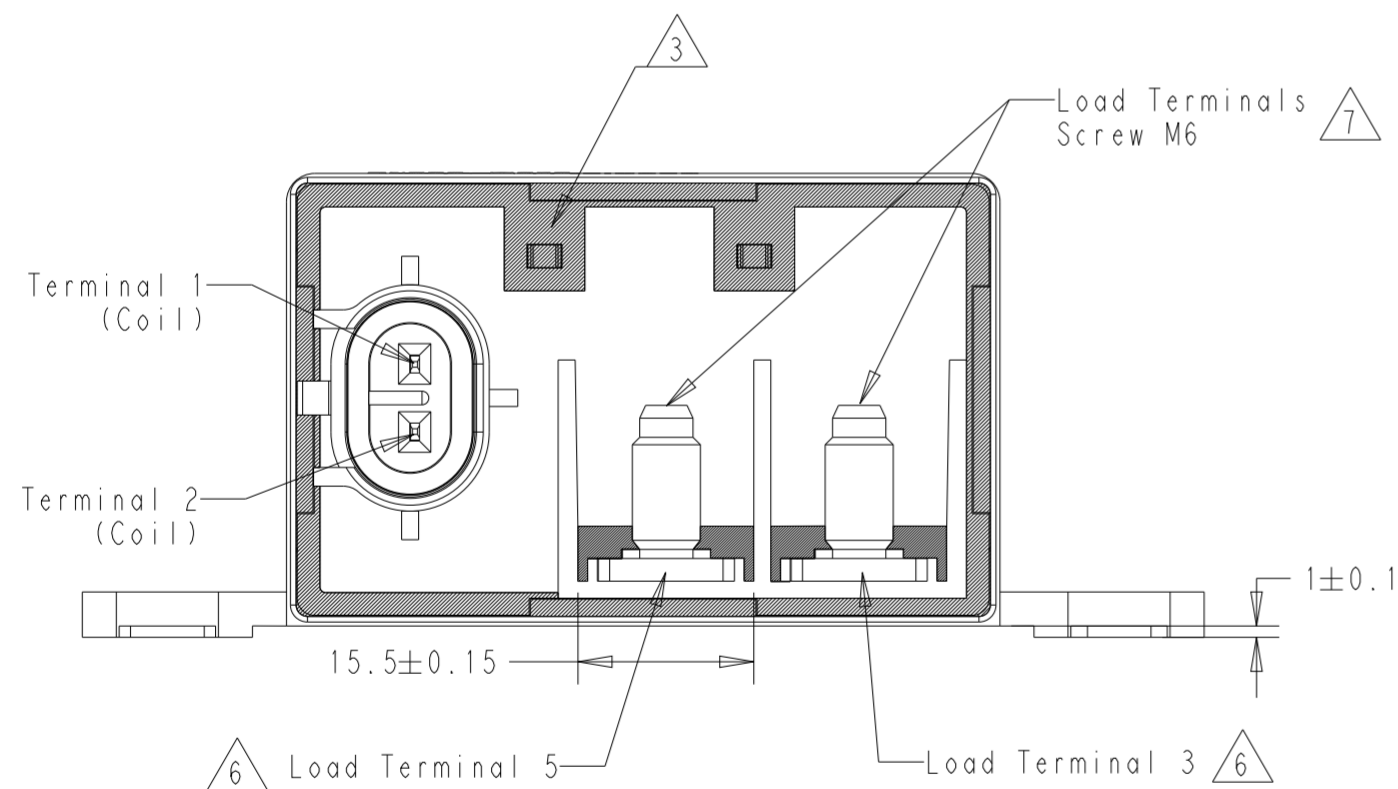
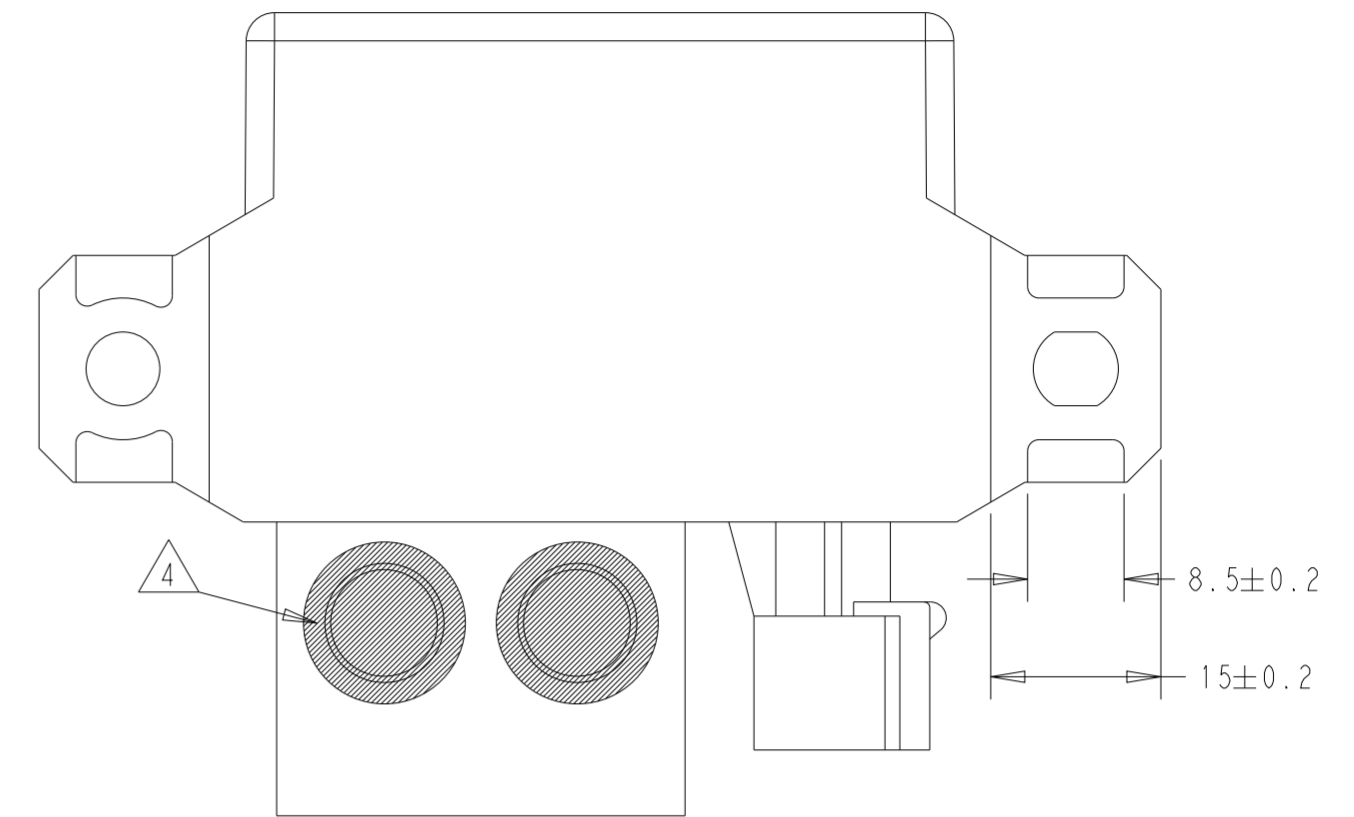
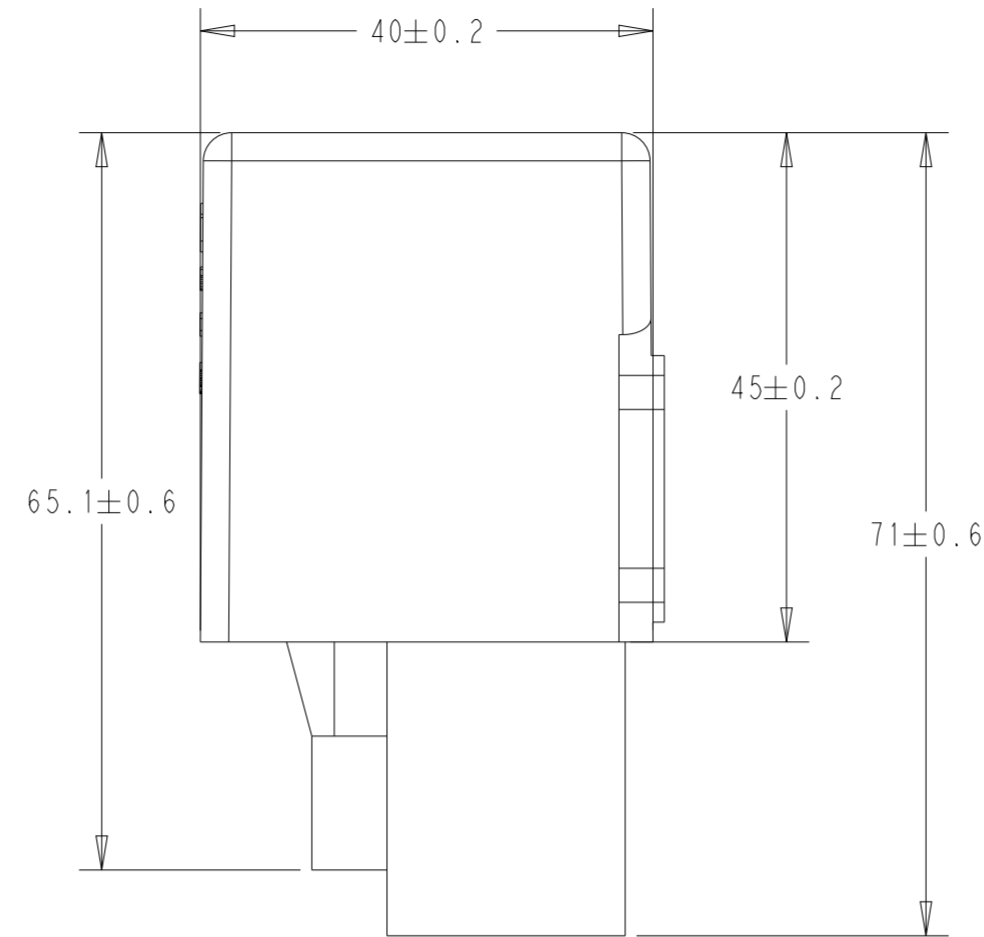
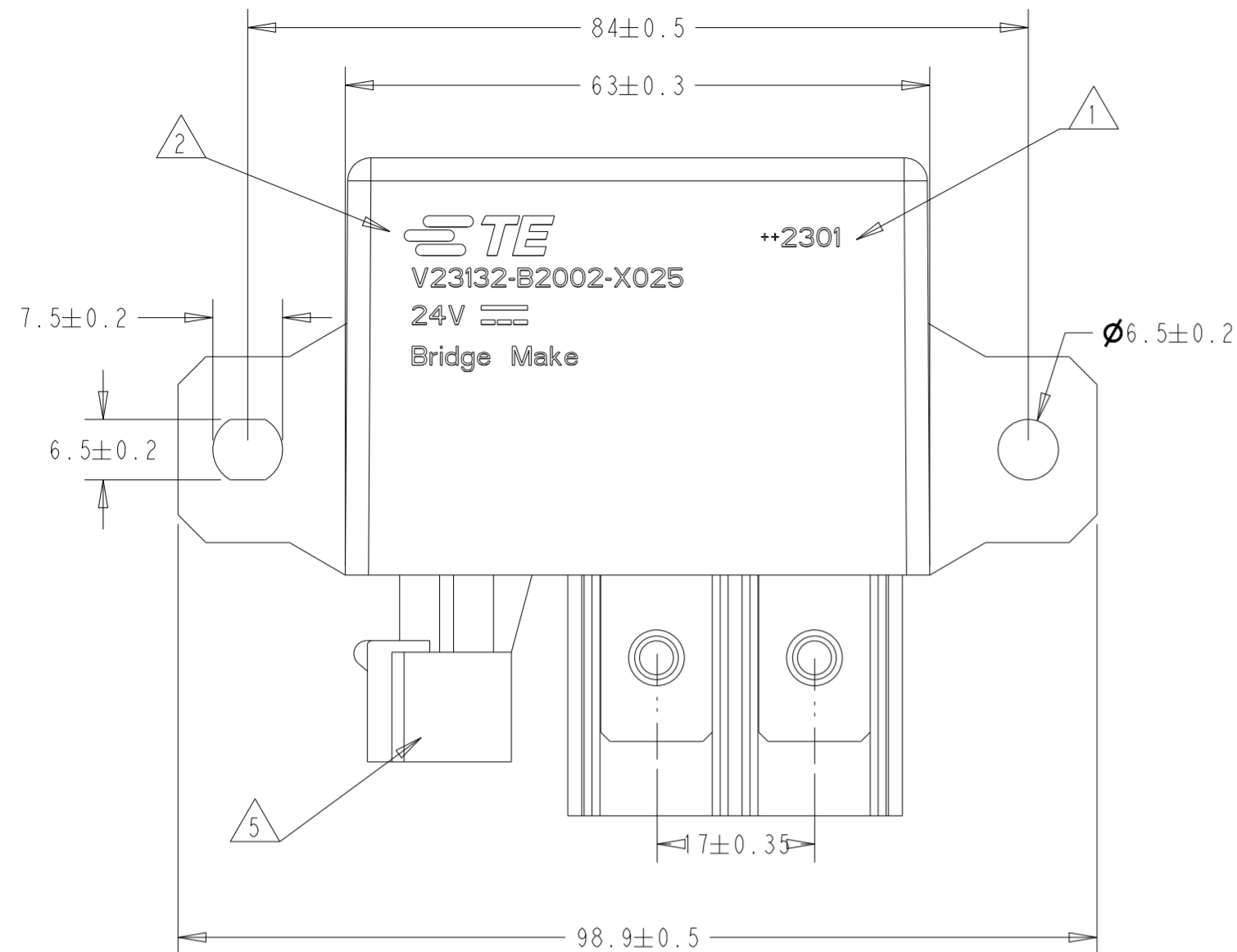
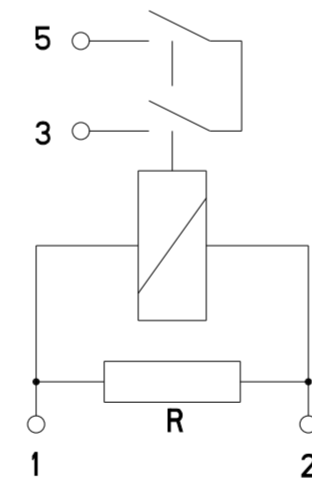


REVISIONS					
P	LTR	DESCRIPTION	DATE	DWN	APVD
A		Initial Release	07FEB2011	HMF	-
A1		Drawing Update	09JUN2023	GL	Olaf

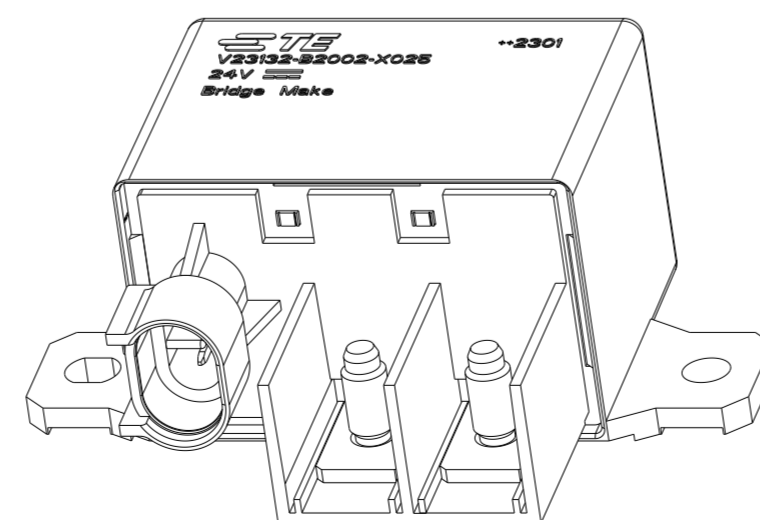


CIRCUIT DIAGRAM



NOTES

- 1 Datecode as ++YYWW (Year and Week), for traceability.
- 2 Cover marking (Printed, Moulded or Lasered) includes: TE Logo and Part Alias, Nominal values and Circuit Diagram.
- 3 Sealed area with Epoxy (IP67)
- 4 Sealed area with Epoxy (Electrical isolation)
- 5 Coil Connection: Connector AMP Superseal 1.5 series PN 282080-1
- 6 Load Connection: Cable lug M6, maximum cable section 25 mm²
- 7 Maximum torsion of screw bolts: 5Nm
Higher tightening torques could be applied depending on the used nuts. Needs to be agreed between TE and the customer.



RELAY TE PN	TE PART ALIAS	REV.
1-1414632-0	V23132-B2002-X025	0

THIS DRAWING IS A CONTROLLED DOCUMENT.		DWN	09JUN2023	STE TE Connectivity
		CHK	09JUN2023	
		APVD	-	NAME
		PRODUCT SPEC	-	HCR150 BRIDGE MAKE 24V
		APPLICATION SPEC	-	SIZE
		WEIGHT	220g	CAGE CODE
		CUSTOMER DRAWING	-	DRAWING NO
		SCALE	1:1	RESTRICTED TO
		SHEET	1 OF 1	-
		REV	A1	