

CJ Series Analog I/O Unit

CJ1W-AD/DA/MAD

CSM_CJ1W-AD_DA_MAD_DS_E_1_1

For Various Analog I/Os

- Analog Input Units for converting analog input signals into binary data
- Analog Output Units for converting binary data into analog output signals



CJ1W-AD081-V1

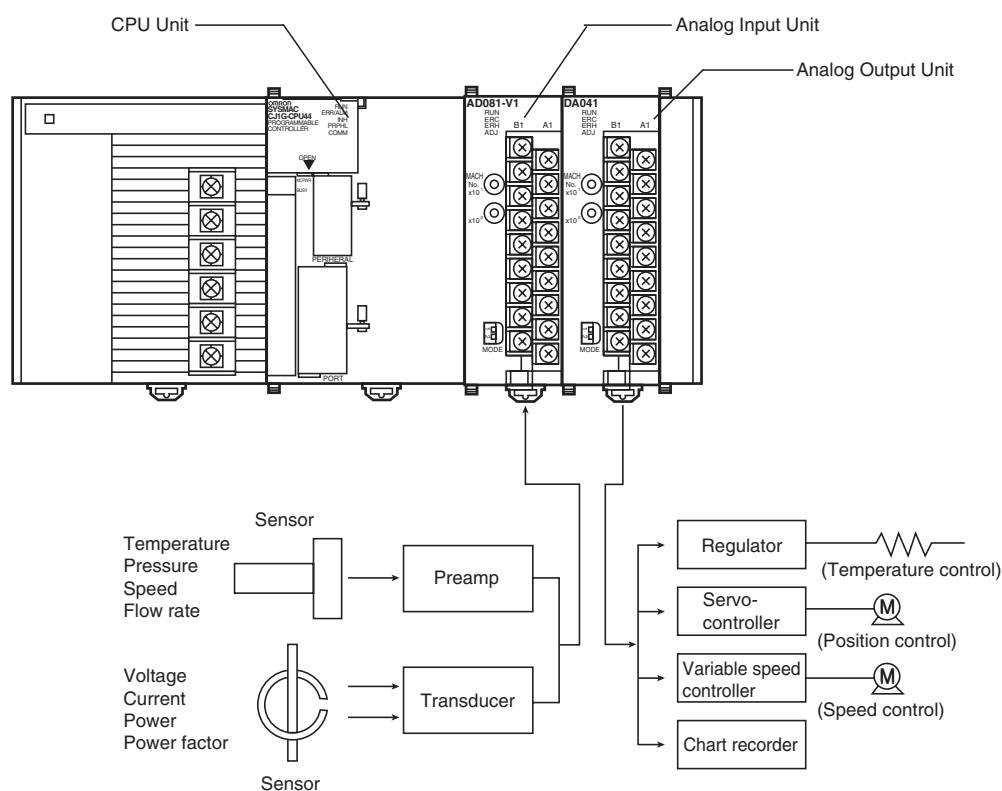


CJ1W-DA08V

Features

- Holds a maximum of 8 analog input signals in 1 unit.
- With functions including line disconnection detection, peak value holding, as well as offset and gain adjustment.
- Outputs a maximum of 8 output signals with 1 unit.
- With functions including output hold, offset and gain adjustment, as well as scaling (CJ1W-DA08V/08C).


System Configuration



Note: The above diagram is an installation example for the CJ1W-AD041-V1/081-V1 Analog Input Units and CJ1W-DA021/041 Analog Output Units.

Ordering Information

Analog Input Units


Unit classification	Product name	I/O points	Signal range selection	Signal range	Resolution	Conversion Speed	Accuracy at ambient temperature of 25°C)	External connection	No. of unit numbers allocated	Current consumption (A)		Model	Standards
										5 V	24 V		
CJ1 Special I/O Units		8 inputs	Set separately for each input	1 to 5 V, 0 to 5 V, 0 to 10 V, ±10 V, 4 to 20 mA	1/8,000 (Settable to 1/4,000) (See note 1.)	250 µs/point max. (Settable to 1 ms/point) (See note 1.)	Voltage: ±0.2% of F.S. Current: ±0.4% of F.S. (See note 2.)	Removable terminal block	1	0.42	–	CJ1W-AD081-V1	UC1, N, L, CE
		4 inputs	Set separately for each input									CS1W-AD041-V1	

Note: 1. The resolution and conversion speed cannot be set independently. If the resolution is set to 1/4,000, then the conversion speed will be 1 ms/point.

2. At 23 ±2°C


3. For products manufactured from August 2007 onwards.

Analog Output Units

Unit classification	Product name	I/O points	Signal range selection	Signal range	Resolution	Conversion Speed	Accuracy at ambient temperature of 25°C)	External connection	External power supply	No. of unit numbers allocated	Current consumption (A)		Model	Standards
											5 V	24 V		
CJ1 Special I/O Units		8 outputs	Set separately for each input	1 to 5 V, 0 to 5 V, 0 to 10 V, –10 to 10 V	1/4,000 (Settable to 1/8,000) (See note.)	1 ms/point (Settable to 250 µs/point max.)	±0.3% of F.S.	Removable terminal block	24 VDC +10% –15% , 140 mA max.	1	0.14	0.14 (See note.)	CJ1W-DA08V	UC1, N, L, CE
		8 outputs		4 to 20 mA					24 VDC +10% –15% , 170 mA max.			0.17 (See note.)	CS1W-DA08C	UC1, N, CE
		4 outputs		1 to 5 V, 0 to 5 V, 0 to 10 V, –10 to 10 V, 4 to 20 mA	1/4,000	1 ms/point max.	Voltage: ±0.3% of F.S. Current: ±0.5% of F.S.		24 VDC +10% –15% , 200 mA max.	1	0.12	0.2 (See note.)	CJ1W-DA041	UC1, N, L, CE
		2 outputs							24 VDC +10% –15% , 140 mA max.			0.14 (See note.)	CS1W-DA021	

Note: This is for an external power supply, and not for internal current consumption.

Analog I/O Units

Unit classification	Product name	I/O points	Signal range selection	Signal range	Resolution	Conversion Speed	Accuracy at ambient temperature of 25°C)	External connection	No. of unit numbers allocated	Current consumption (A)		Model	Standards
										5 V	24 V		
CJ1 Special I/O Units		4 inputs	Set separately for each input	1 to 5 V, 0 to 5 V, 0 to 10 V, –10 to 10 V, 4 to 20 mA	1/4,000 (Settable to 1/8,000)	1 ms/point (Settable to 500 µs/point max.)	Voltage: ±0.2% of F.S. Current: ±0.2% of F.S.	Removable terminal block	1	0.58	–	CJ1W-MAD42	UC1, N, L, CE
		2 outputs					Voltage: ±0.3% of F.S. Current: ±0.3% of F.S.						

Note: The resolution and conversion speed cannot be set independently. If the resolution is set to 1/4,000, then the conversion speed will be 1 ms/point.

Accessories

There is no accessory for the CJ Series Analog I/O Units.

International Standards

- The standards indicated in the "Standards" column are those current for UL, CSA, cULus, NK, and Lloyd standards and EC Directives as of the end of February 2008. The standards are abbreviated as follows: U: UL, U1: UL (Class I Division 2 Products for Hazardous Locations), C: CSA, US: cULus, UC1: cULus (Class I Division 2 Products for Hazardous Locations), CU: cUL, N: NK, L: Lloyd, and CE: EC Directives.
- Ask your OMRON representatives for the conditions under which the standards were met.

Individual Specifications

Analog Input Units CJ1W-AD041-V1/AD081-V1

Specifications

Item		CJ1W-AD041-V1	CJ1W-AD081-V1
Unit type		CJ-series Special I/O Unit	
Isolation		Between I/O and PLC signals: Photocoupler *1 (No isolation between each I/O signals.)	
External terminals		18-point detachable terminal block (M3 screws)	
Affect on CPU Unit cycle time		0.2 ms	
Power consumption		420 mA max. at 5 VDC	
Dimensions		31 × 90 × 65 mm (W × H × D)	
Weight		140 g max.	
General specifications		Conforms to general specifications for SYSMAC CJ Series.	
Mounting position		CJ-series CPU Rack or CJ-series Expansion Rack	
Maximum number of Units		Units per Rack (CPU Rack or Expansion Rack): 4 to 10 Units max. *2	
Data exchange with CPU Units *3		Special I/O Unit Area in CIO Area (CIO 2000 to CIO 2959): 10 words per Unit Special I/O Unit Area in DM Area (D20000 to D29599): 100 words per Unit	
Input specifications *6	Number of analog inputs	4	8
	Input signal range *4	1 to 5 V 0 to 5 V 0 to 10 V -10 to 10 V 4 to 20 mA	
	Maximum rated input (for 1 point)	Voltage Input: ±15 V Current Input: ±30 mA *5	
	Input impedance	Voltage Input: 1 MΩ min. Current Input: 250 Ω (rated value)	
	Resolution *7	4,000/8,000	4,000/8,000
	Converted output data	16-bit binary data	
	Accuracy *8	23±2°C	Voltage Input: ±0.2% of F.S. Current Input: ±0.4% of F.S.
		0°C to 55°C	Voltage Input: ±0.4% of F.S. Current Input: ±0.6% of F.S.
Input functions	A/D conversion time *9	1 ms/250 μs	1 ms/250 μs
	Mean value processing	Stores the last "n" data conversions in the buffer, and stores the mean value of the conversion values. Buffer number: n = 2, 4, 8, 16, 32, 64	
	Peak value holding	Stores the maximum conversion value while the Peak Value Hold Bit is ON.	
	Input disconnection detection	Detects the disconnection and turns ON the Disconnection Detection Flag. *10	

*1. Do not apply a voltage higher than 600 V to the terminal block when performing withstand voltage test on this Unit. Otherwise, internal elements may deteriorate.

*2. The maximum number of Analog Input Units that can be mounted to one Rack varies depending on the current consumption of the other Units mounted to the Rack.

Power Supply Unit	Rack	CJ1W-DA021 CJ1W-DA041 (5 VDC 120 mA) CJ1W-DA08V CJ1W-DA08C (5 VDC 140 mA)	CS1W-AD041-V1 CJ1W-AD081-V1 (5 VDC 420 mA)	CJ1W-MAD42 (5 VDC 580 mA)
CJ1W-PA205R CJ1W-PA205C CJ1W-PD025 (5.0 A at 5 VDC)	CPU Rack	10	9	7
	Expansion Rack	10	10	8
CJ1W-PA202 (2.8 A at 5 VDC)	CPU Rack	10	4	3
	Expansion Rack	10	6	4
CJ1W-PD022 (2.0 A at 5 VDC)	CPU Rack	7	2	1
	Expansion Rack	10	4	3

***3. Data Transfer with the CPU Unit**

Special I/O Unit Area in CIO Area (CIO 2000 to CIO 2959, CIO 200000 to CIO 295915)	10 words per Unit refreshed cyclically	CPU Unit to Analog Input Unit	Peak hold values
		Analog Input Unit to CPU Unit	Analog input values Line disconnection detection Alarm flags Etc.
Special I/O Unit Area in DM Area (D20000 to D29599)	100 words per Unit refreshed cyclically	CPU Unit to Analog Input Unit	Input signal conversion settings Signal range settings Averaging function Resolution/conversion time settings Operation mode settings

*4. Input signal ranges can be set for each input.

*5. Voltage input or current input are chosen by using the voltage/current switch at the back of the terminal block.

*6. The Analog Input Unit must be operated according to the input specifications provided here. Operating the Unit outside these specifications will cause the Unit to malfunction.

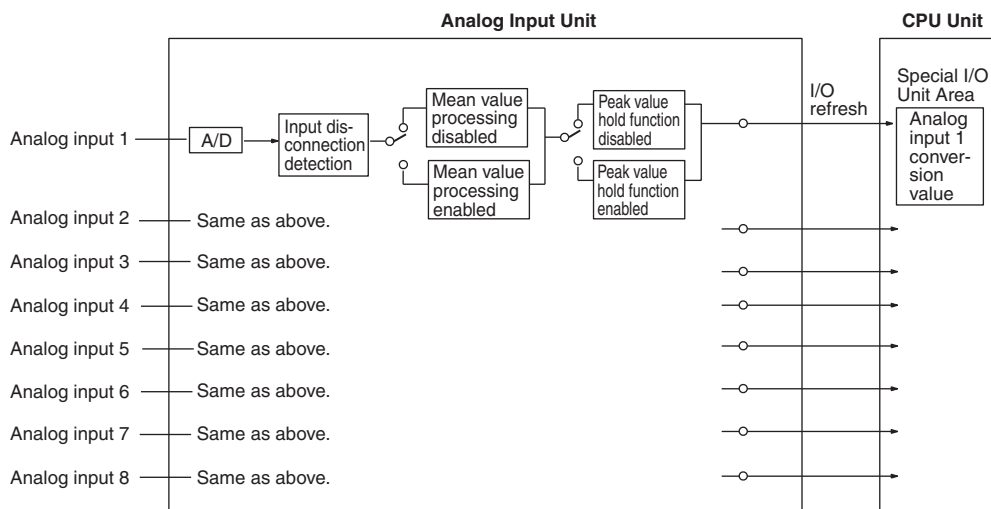
*7. The resolution can be set to 8,000 and the conversion time to 250 μ s in the DM Area (m+18). There is only one setting for both of these, i.e., they are both enabled or disabled together.

*8. The accuracy is given for full scale. For example, an accuracy of $\pm 0.2\%$ means a maximum error of ± 8 (BCD).

The default setting is adjusted for voltage input. To use current input, perform the offset and gain adjustments as required.

*9. A/D conversion time is the time it takes for an analog signal to be stored in memory as converted data after it has been input. It takes at least one cycle before the converted data is read by the CPU Unit.

*10. Line disconnection detection is supported only when the range is set to 1 to 5 V or 4 to 20 mA. If there is no input signal when the 1 to 5 V or 4 to 20 mA range is set, the Line Disconnection Flag will turn ON.

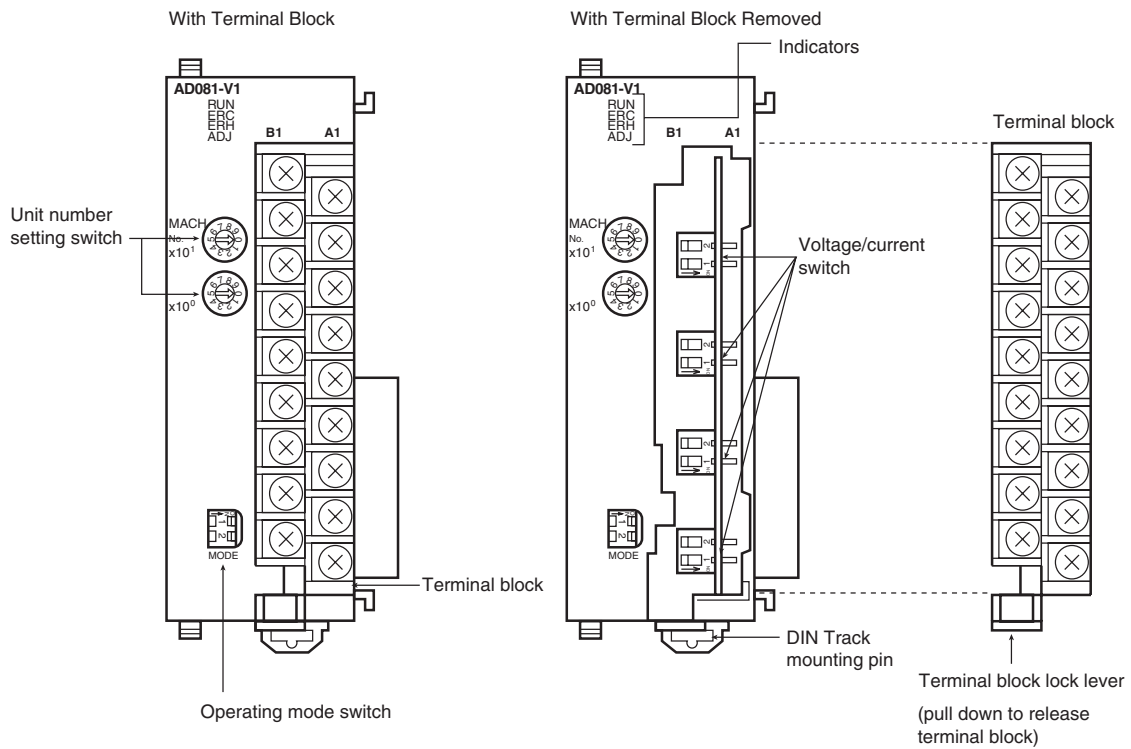
Input Function Block Diagram

Note: There are only four analog inputs for the CJ1W-AD041-V1.

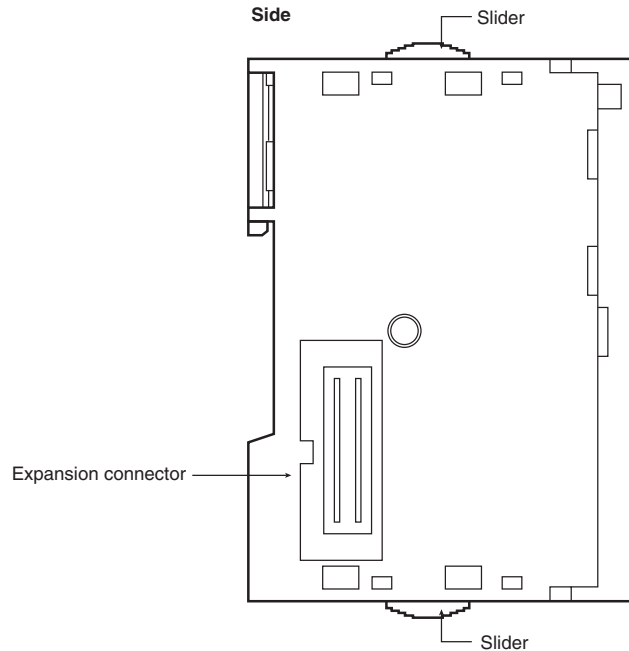
External Interface

CJ1W-AD041-V1
CJ1W-AD081-V1

Front



Side



Indicators

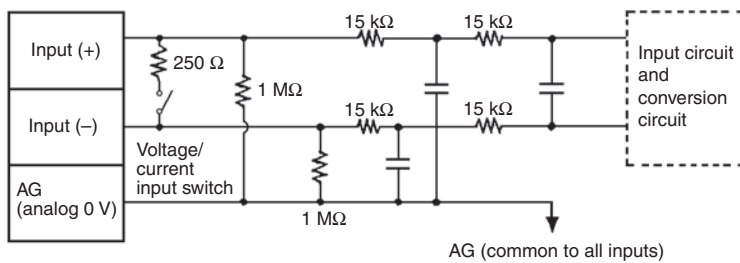
The indicators show the operating status of the Unit. The following table shows the meanings of the indicators.

LED	Meaning	Indicator	Operating status
RUN (green)	Operating	Lit	Operating in normal mode.
		Not lit	Unit has stopped exchanging data with the CPU Unit.
ERC (red)	Error detected by Unit	Lit	Alarm has occurred (such as disconnection detection) or initial settings are incorrect.
		Not lit	Operating normally.
ERH (red)	Error in the CPU Unit	Lit	Error has occurred during data exchange with the CPU Unit.
		Not lit	Operating normally.
ADJ (yellow)	Adjusting	Flashing	Operating in offset/gain adjustment mode.
		Not lit	Other than the above.

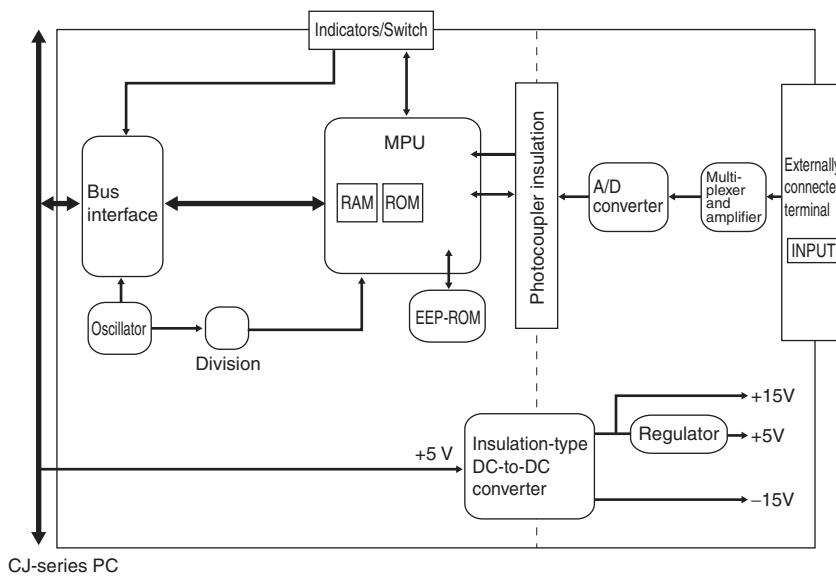
Internal Circuit

The following diagrams show the internal circuit of the analog input section.

Input Circuits



Internal Configuration



Terminal Arrangement

The signal names corresponding to the connecting terminals are as shown in the following diagram.

CJ1W-AD041-V1

Input 2 (+)	B1	A1	Input 1 (+)
Input 2 (–)	B2	A2	Input 1 (–)
Input 4 (+)	B3	A3	Input 3 (+)
Input 4 (–)	B4	A4	Input 3 (–)
AG	B5	A5	AG
N.C.	B6	A6	N.C.
N.C.	B7	A7	N.C.
N.C.	B8	A8	N.C.
N.C.	B9	A9	N.C.

CJ1W-AD081-V1

Input 2 (+)	B1	A1	Input 1 (+)
Input 2 (–)	B2	A2	Input 1 (–)
Input 4 (+)	B3	A3	Input 3 (+)
Input 4 (–)	B4	A4	Input 3 (–)
AG	B5	A5	AG
Input 6 (+)	B6	A6	Input 5 (+)
Input 6 (–)	B7	A7	Input 5 (–)
Input 8 (+)	B8	A8	Input 7 (+)
Input 8 (–)	B9	A9	Input 7 (–)

- Note:**
1. The analog input numbers that can be used are set in the Data Memory (DM).
 2. The input signal ranges for each input are set in the Data Memory (DM). They can be set in units of input numbers.
 3. The AG terminals are connected to the 0 V analog circuit in the Unit. Connecting shielded input lines can improve noise resistance.
 4. Do not connect anything to NC terminals.

Analog Output Units CJ1W-DA021/DA041/DA08V/DA08C

Specifications

Item	CJ1W-DA021	CJ1W-DA041	CJ1W-DA08V	CJ1W-DA08C
Unit type	CJ-series Special I/O Unit			
Isolation *1	Between I/O and PLC signals: Photocoupler (No isolation between each I/O signals.)			
External terminals	18-point detachable terminal block (M3 screws)			
Affect on CPU Unit cycle time	0.2 ms			
Power consumption	5 VDC, 120 mA max.		5 VDC, 140 mA max.	
External power supply	24 VDC $\overset{+10\%}{\underset{-15\%}$ (inrush current: 20 A max., pulse width: 1 ms max.)			
	140 mA max.	200 mA max.	140 mA max.	170 mA max.
Dimensions	31 × 90 × 65 mm (W × H × D)			
Weight	150 g max.			
General specifications	Conforms to general specifications for SYSMAC CJ-series Series.			
Mounting position	CJ-series CPU Rack or CJ-series Expansion Rack			
Maximum number of Units	Units per Rack (CPU Rack or Expansion Rack): 10 Units max. *2			
Data exchange with CPU Unit *3	Special I/O Unit Area CIO 200000 to CIO 295915 (Words CIO 2000 to CIO 2959)			
	Internal Special I/O Unit DM Area (D20000 to D29599)			

Output Specifications and Functions

Item		CJ1W-DA021	CJ1W-DA041	CJ1W-DA08V	CJ1W-DA08C
Number of analog outputs		2	4	8	8
Output signal range *4		1 to 5 V/4 to 20 mA 0 to 5 V 0 to 10 V −10 to +10 V		1 to 5 V 0 to 5 V 0 to 10 V −10 to +10 V	4 to 20 mA
Output impedance		0.5 Ω max. (for voltage output)			
Max. output current (for 1 point)		12 mA (for voltage output)		2.4 mA (for voltage output)	—
Maximum permissible load resistance		600 Ω (current output)		—	350 Ω
Resolution		4,000 (full scale)		4,000/8,000 *8	
Set data		16-bit binary data			
Accuracy *5	25°C	Voltage output: ±0.3% of F.S. Current output: ±0.5% of F.S.		±0.3% of F.S.	±0.3% of F.S.
	0°C to 55°C	Voltage output: ±0.5% of F.S. Current output: ±0.8% of F.S.		±0.5% of F.S.	±0.6% of F.S.
D/A conversion time *6		1.0 ms max. per point		1.0 ms or 250 μs max. per point	
Output hold function		Outputs the specified output status (CLR, HOLD, or MAX) under any of the following circumstances. When the Conversion Enable Bit is OFF. *7 In adjustment mode, when a value other than the output number is output during adjustment. When output setting value error occurs or PLC operation stops. When the CPU Unit is on standby. When the Load is OFF.			
Scaling function		Setting values in any specified unit within a range of ±32,000 as the upper and lower limits allows D/A conversion to be executed and analog signals to be output with these values as full scale. (With the CJ1W-DA08V/DA08C, this function is enabled only for a conversion time of 1.0 ms and a resolution of 4,000.)			

*1. Do not apply a voltage higher than 600 V to the terminal block when performing withstand voltage test on this Unit.

*2. The maximum number of Analog Output Units that can be mounted to one Rack varies depending on the current consumption of the other Units mounted to the Rack.

Select a 24-VDC power supply based on the surge current. The following OMRON external power supplies are recommended.

Manufacturer	Model number	Specifications
OMRON	S8VS-06024	100 to 240 VAC, 60 W
	S8VS-12024	100 to 240 VAC, 120 W
	S8VM-05024	100 to 240 VAC, 50 W
	S8VM-10024	100 to 240 VAC, 100 W

*3. Data exchange methods with the CPU Unit are as follows:

Special I/O Unit Area in CIO Area CIO 2000 to CIO 2959 (CIO 200000 to CIO 295915)	10 words per Unit Refreshed cyclically	CPU Unit to Analog I/O Unit	Analog output values Conversion enable bits
		Analog I/O Unit to CPU Unit	Alarm flags
Special I/O Unit Area in DM Area D20000 to D29599	100 words per Unit Refreshed at power ON or restart	CPU Unit to Analog I/O Unit	Output signal conversion settings and signal range settings Output status when holding outputs

*4. Output signal ranges can be set for each output.

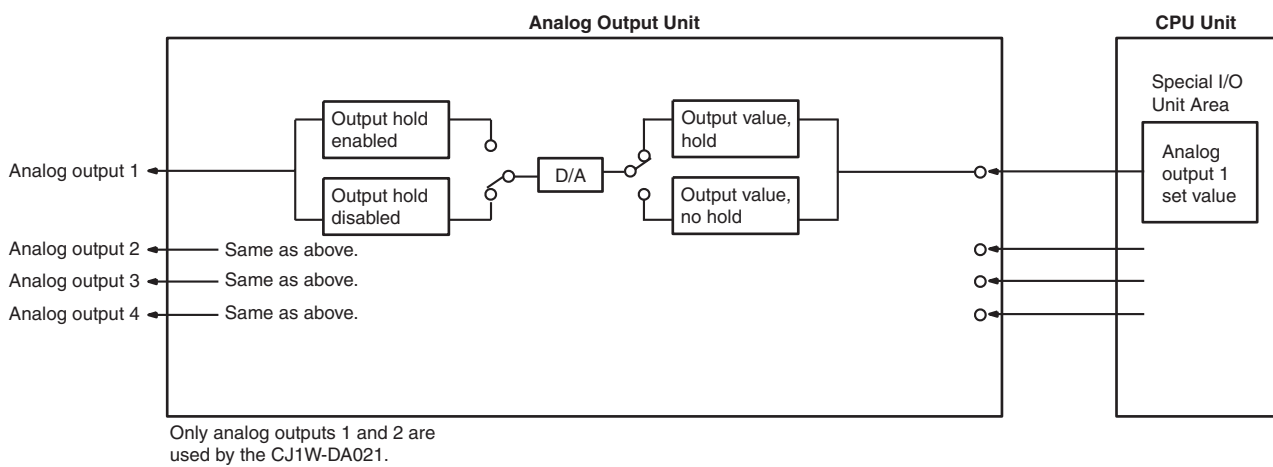
*5. The accuracy is given for full scale. For example, an accuracy of $\pm 0.3\%$ means a maximum error of ± 12 (BCD) at a resolution of 4,000. For the CJ1W-DA021/041, the accuracy is at the factory setting for a current output. When using a voltage output, adjust the offset gain as required.

*6. D/A conversion time is the time required for converting and outputting the PLC data. It takes at least one cycle for the data stored in the PLC to be read by the Analog Output Unit.

*7. When the operation mode for the CPU Unit is changed from RUN mode or MONITOR mode to PROGRAM mode, or when the power is turned ON, the Output Conversion Enable Bit will turn OFF. The output status specified according to the output hold function will be output.

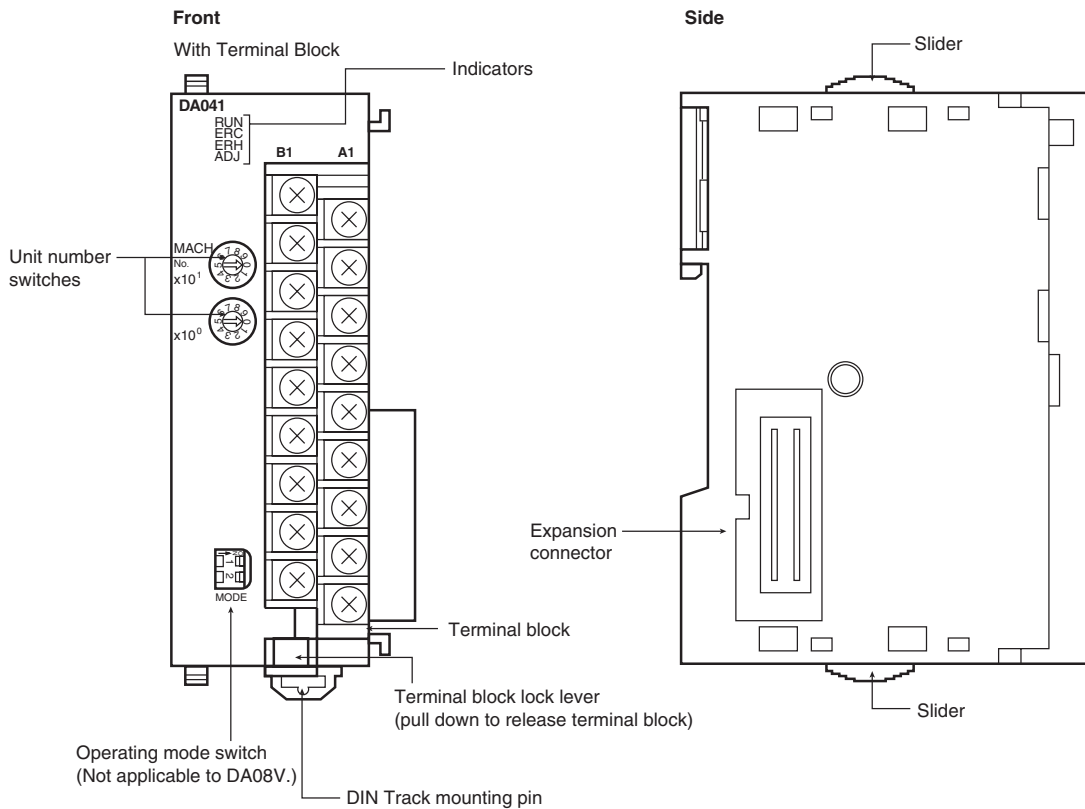
*8. The CJ1W-DA08V/08C can be set to a conversion cycle of 250 μ s and a resolution of 8,000 using the setting in D(m+18).

Output Function Block Diagram



External Interface

CJ1W-DA021/041/08V/08C



The terminal block is attached by a connector. It can be removed by pressing down on the lever at the bottom of the terminal block. Be sure that this lever is raised during normal operation.

Indicators

The indicators show the operating status of the Unit. The following table shows the meanings of the indicators.

LED	Meaning	Indicator	Operating status
RUN (green)	Operating	Lit	Operating in normal mode.
		Not lit	Unit has stopped exchanging data with the CPU Unit.
ERC (red)	Error detected by Unit	Lit	Alarm has occurred (such as disconnection detection) or initial settings are incorrect.
		Not lit	Operating normally.
ERH (red)	Error in the CPU Unit	Lit	Error has occurred during data exchange with the CPU Unit.
		Not lit	Operating normally.
ADJ (yellow)	Adjusting	Flashing	Operating in offset/gain adjustment mode.
		Not lit	Other than the above.

Terminal Arrangement

The signal names corresponding to the connecting terminals are as shown in the following diagram.

CJ1W-DA021

Voltage output 2 (+)	B1	A1	Voltage output 1 (+)
Output 2 (-)	B2	A2	Output 1 (-)
Current output 2 (+)	B3	A3	Current output 1 (+)
N.C.	B4	A4	N.C.
N.C.	B5	A5	N.C.
N.C.	B6	A6	N.C.
N.C.	B7	A7	N.C.
N.C.	B8	A8	N.C.
0 V	B9	A9	24 V

CJ1W-DA041

Voltage output 2 (+)	B1	A1	Voltage output 1 (+)
Output 2 (-)	B2	A2	Output 1 (-)
Current output 2 (+)	B3	A3	Current output 1 (+)
Voltage output 4 (+)	B4	A4	Voltage output 3 (+)
Output 4 (-)	B5	A5	Output 3 (-)
Current output 4 (+)	B6	A6	Current output 3 (+)
N.C.	B7	A7	N.C.
N.C.	B8	A8	N.C.
0 V	B9	A9	24 V

CJ1W-DA08V (Voltage Output) and CJ1W-DA08C (Current Output)

Output 2 (+)	B1	A1	Output 1 (+)
Output 2 (-)	B2	A2	Output 1 (-)
Output 4 (+)	B3	A3	Output 3 (+)
Output 4 (-)	B4	A4	Output 3 (-)
Output 6 (+)	B5	A5	Output 5 (+)
Output 6 (-)	B6	A6	Output 5 (-)
Output 8 (+)	B7	A7	Output 7 (+)
Output 8 (-)	B8	A8	Output 7 (-)
0 V	B9	A9	24 V

- Note:**
1. The analog output numbers that can be used are set in the Data Memory (DM).
 2. The output signal ranges for each output are set in the Data Memory (DM). They can be set in units of output numbers.
 3. The N.C. terminals are not connected to internal circuit.
 4. The following OMRON external power supplies are recommended.

Manufacturer	Model number	Specifications
OMRON	S8VS-06024	100 to 240 VAC, 60 W
	S8VS-12024	100 to 240 VAC, 120 W
	S8VM-05024	100 to 240 VAC, 50 W
	S8VM-10024	100 to 240 VAC, 100 W

5. Use a separate power supply from the one used for Basic I/O Units. Faulty Unit operation may be caused by noise if power is supplied from the same source.

Analog I/O Unit CJ1W-MAD42

Specifications

Item	CJ1W-MAD42
Unit type	CJ-series Special I/O Unit
Isolation	Between I/O and PLC signals: Photocoupler (No isolation between each I/O signals.)
External terminals	18-point detachable terminal block (M3 screws)
Current consumption	580 mA max. at 5 V DC
Dimensions	31 × 90 × 65 mm (W × H × D)
Weight	150 g max.
General specifications	Conforms to general specifications for SYSMAC CJ-series Series.
Mounting position	CJ-series CPU Rack or CJ-series Expansion Rack (Cannot be mounted to a C200H Expansion I/O Rack or a SYSMAC BUS Slave Rack.)
Maximum number of Units *	CPU Rack: 7 Units max. Expansion Rack: 8 Units max. Overall system: (7 Units max. on CPU Rack) + (8 Units per Expansion Rack × 3 Racks) = 31 Units max.
Data exchange with CPU Units	Special I/O Unit Area CIO 200000 to CIO 295915 (Words CIO 2000 to CIO 2959): Exchanges 10 words of data per Unit. Internal Special I/O Unit DM Area (D20000 to D29599)

* The maximum number of Analog I/O Units that can be mounted to one Rack will varies depending on the Power Supply Unit model and the current consumption of the other Units mounted to the Rack.

Power Supply Units	Maximum number of Units
CJ1W-PA205R/PD025	CPU Rack: 7 Units max. Expansion Racks: 8 Units/Rack max.
CJ1W-PA202	CPU Rack: 3 Units max. Expansion Racks: 4 Units/Rack max.

Input Specifications and Functions

Item	Voltage input	Current input
Number of analog inputs	4	
Input signal range *1	1 to 5 V 0 to 5 V 0 to 10 V -10 to 10 V	4 to 20 mA *2
Maximum rated input (for 1 point) *3	±15 V	±30 mA
External input impedance	1 MΩ min.	250 Ω (rated value)
Resolution	4,000/8,000 (full scale) *6	
Converted output data	16-bit binary data	
Accuracy *4	25°C	±0.2% of F.S.
	0°C to 55°C	±0.4% of F.S.
A/D conversion time *5	1.0 ms/500 μs max. per point	
Mean value processing	Stores the last "n" data conversions in the buffer, and stores the mean value of the conversion values. Buffer number: n = 2, 4, 8, 16, 32, 64	
Peak value holding	Stores the maximum conversion value while the Peak Value Hold Bit is ON.	
Scaling	Enabled only for conversion time of 1 ms and resolution of 4,000. Setting any values within a range of ±32,000 as the upper and lower limits allows the A/D conversion result to be output with these values as full scale.	
Input disconnection detection	Detects the disconnection and turns ON the Disconnection Detection Flag.	

*1. Input and output signal ranges can be set for each input and output.

*2. Voltage input or current input are chosen by using the voltage/current switch at the back of the terminal block.

*3. The Analog I/O Unit must be operated according to the input specifications provided here. Operating the Unit outside these specifications will cause the Unit to malfunction.

*4. The accuracy is given for full scale. For example, an accuracy of ±0.2% means a maximum error of ±8 (BCD) at a resolution of 4,000.

*5. A/D conversion time is the time it takes for an analog signal to be stored in memory as converted data after it has been input. It takes at least one cycle before the converted data is read by the CPU Unit.

*6. By means of the D(m+18) setting, the resolution can be changed to 8,000, and the conversion time can be changed to 500 μs.

Output Specifications

Item		Voltage output	Current output
Number of analog outputs		2	
Output signal range *1		1 to 5 V 0 to 5 V 0 to 10 V -10 to 10 V	4 to 20 mA
External output impedance		0.5 Ω max.	—
Maximum external output current (for 1 point)		2.4 mA	—
Maximum allowed load resistance		—	600 Ω
Resolution		4,000/8,000 (full scale) *5	
Set data		16-bit binary data	
Accuracy *2	25°C	$\pm 0.3\%$ of F.S.	$\pm 0.3\%$ of F.S.
	0°C to 55°C	$\pm 0.5\%$ of F.S.	$\pm 0.6\%$ of F.S.
D/A conversion time *3		1.0 ms/500 μ s max. per point	
Output hold function		Outputs the specified output status (CLR, HOLD, or MAX) under any of the following circumstances. When the Conversion Enable Bit is OFF. *4 In adjustment mode, when a value other than the output number is output during adjustment. When output setting value error occurs or PLC operation stops. When the CPU Unit is on standby. When the Load is OFF.	
Scaling		Enabled only for conversion time or 1 ms and resolution of 4,000. Setting any values within a range of $\pm 32,000$ as the upper and lower limits allows D/A conversion to be executed and analog signals to be output with these values as full scale.	
Ratio conversion function *5		Stores the results of positive and negative gradient analog inputs calculated for ratio and bias as analog output values. Positive gradient: Analog output = $A \times \text{Analog input} + B$ (A: 0 to 99.99, B: 8,000 to 7FFF hex) Negative gradient: Analog output = $F - A \times \text{Analog input} + B$ (A: 0 to 99.99, B: 8,000 to 7FFF hex, F: Output range maximum value)	

*1. Input and output signal ranges can be set for each input and output.

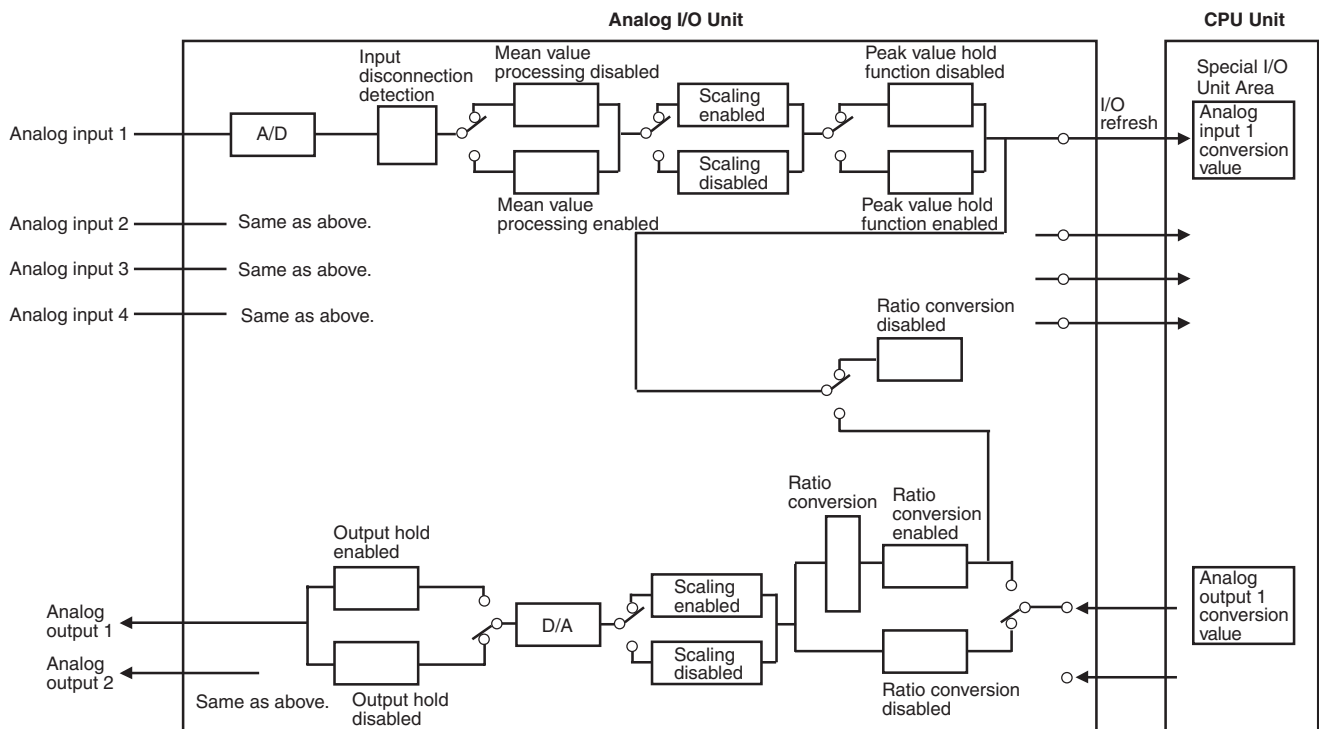
*2. The accuracy is given for full scale. For example, an accuracy of $\pm 0.2\%$ means a maximum error of ± 8 (BCD) at a resolution of 4,000.

*3. D/A conversion time is the time required for converting and outputting the PLC data. It takes at least one cycle for the data stored in the PLC to be read by the Analog I/O Unit.

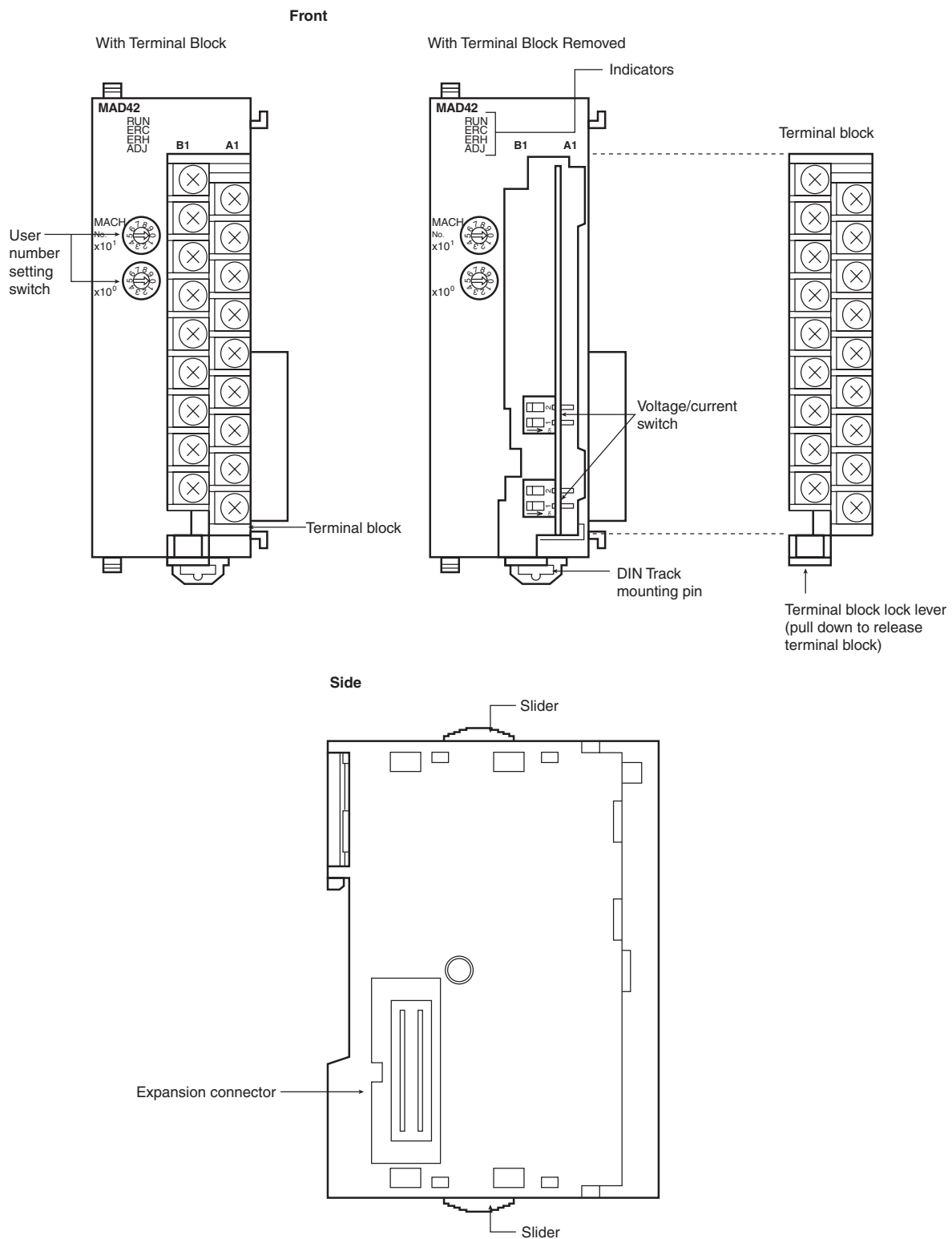
*4. When the operation mode for the CPU Unit is changed from RUN mode or MONITOR mode to PROGRAM mode, or when the power is turned ON, the Output Conversion Enable Bit will turn OFF. The output status specified according to the output hold function will be output.

*5. By means of the D(m+18) setting, the resolution can be changed to 8,000, and the conversion time can be changed to 500 μ s.

I/O Function Block Diagram



External Information



Indicators

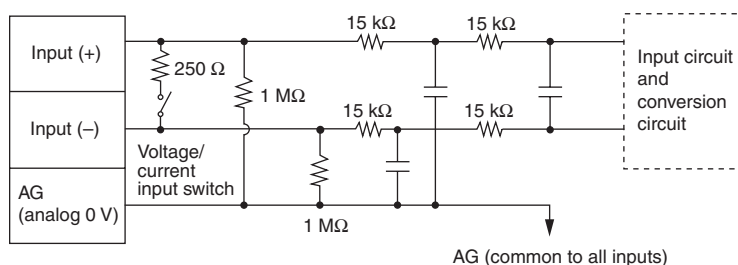
The indicators show the operating status of the Unit. The following table shows the meanings of the indicators.

LED	Meaning	Indicator	Operating status
RUN (green)	Operating	Lit	Operating in normal mode.
		Not lit	Unit has stopped exchanging data with the CPU Unit.
ERC (red)	Error detected by Unit	Lit	Alarm has occurred (such as disconnection detection) or initial settings are incorrect.
		Not lit	Operating normally.
ADJ (yellow)	Adjusting	Flashing	Operating in offset/gain adjustment mode.
		Not lit	Other than the above.
ERH (red)	Error in the CPU Unit	Lit	Error has occurred during data exchange with the CPU Unit.
		Not lit	Operating normally.

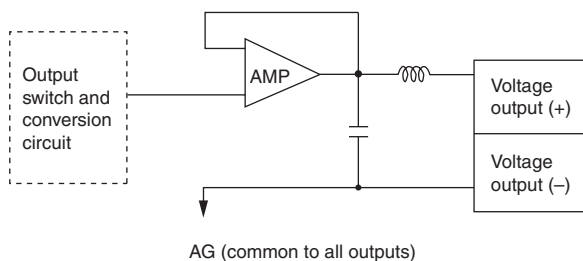
Internal Circuit

The following diagrams show the internal circuit of the analog I/O section.

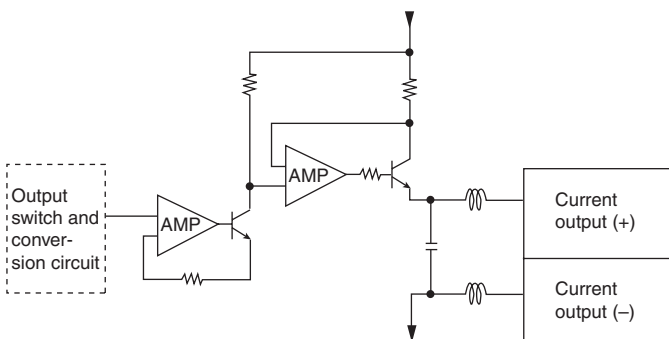
Input Circuits



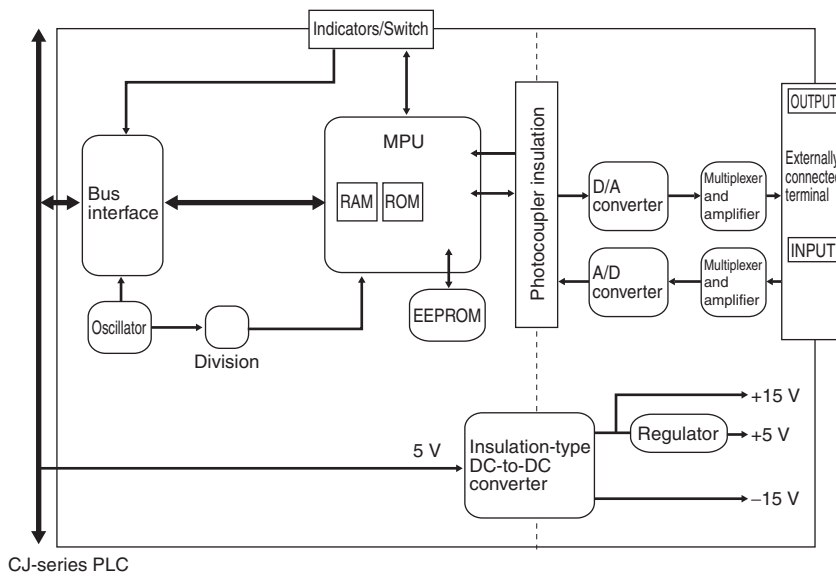
Output Circuits



Current Output Circuits



Internal Configuration



Terminal Arrangement

The signal names corresponding to the connecting terminals are as shown in the following diagram.

CJ1W-MAD42

Voltage output 2 (+)	B1	A1	Voltage output 1 (+)
Output 2 (-)	B2	A2	Output 1 (-)
Current output 2 (+)	B3	A3	Current output 1 (+)
N.C.	B4	A4	N.C.
Input 2 (+)	B5	A5	Input 1 (+)
Input 2 (-)	B6	A6	Input 1 (-)
AG	B7	A7	AG
Input 4 (+)	B8	A8	Input 3 (+)
Input 4 (-)	B9	A9	Input 3 (-)

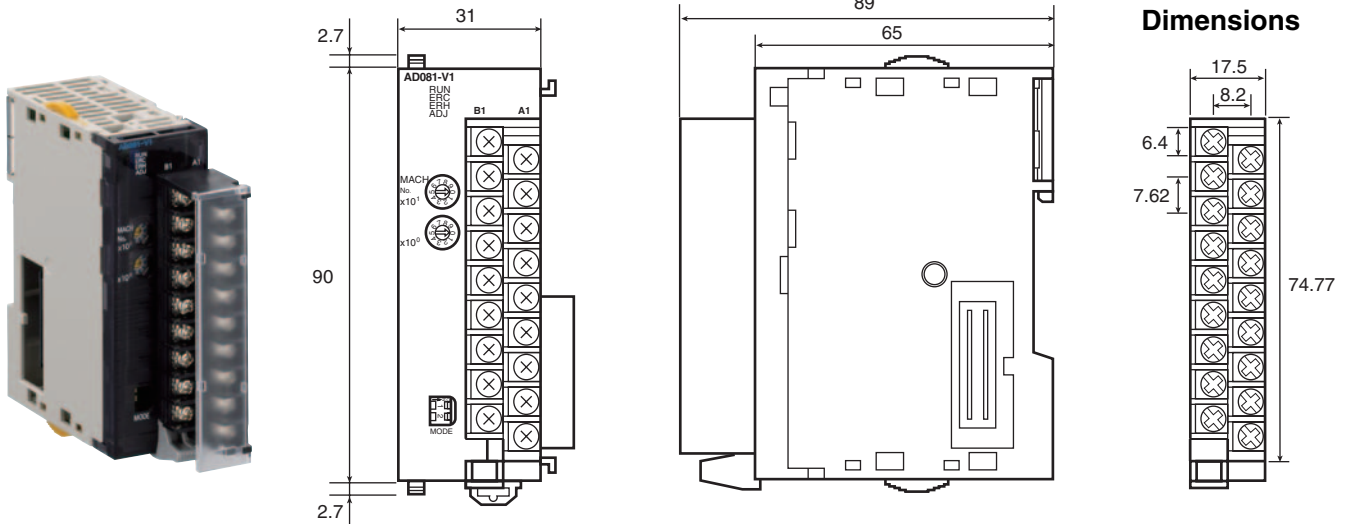
- Note:**
1. The analog I/O numbers that can be used are set in the Data Memory (DM).
 2. The I/O signal ranges for each input and output are set in the Data Memory (DM). They can be set in units of I/O numbers.
 3. The AG terminal (A7, B7) is connected to the 0 V analog circuit in the Unit. Connecting shielded input lines can improve noise resistance.
 4. The N.C. terminals (A4, B4) are not connected to internal circuit.

Dimensions

(Unit: mm)

CJ-series

CJ1W-AD041-V1/081-V1
CJ1W-DA021/041/08V/08C
CJ1W-MAD42



Note: The appearance varies with the model.

About Manuals

Cat. No	Model	Manual name	Application	Contents
W345	SYSMAC CS/CJ Series CS1W-AD041-V1/081-V1/161 CS1W-DA041/08V/08C CS1W-MAD44 CJ1W-AD041-V1/081-V1 CJ1W-DA021/041/08V/08C CJ1W-MAD42	CS/CJ-series Analog I/O Units Operation Manual	Information on using the Analog I/O Units.	Provides information on using the CS/CJ-series Analog Input, Analog Output, and Analog I/O Units.

Read and Understand This Catalog

Please read and understand this catalog before purchasing the products. Please consult your OMRON representative if you have any questions or comments.

Warranty and Limitations of Liability

WARRANTY

OMRON's exclusive warranty is that the products are free from defects in materials and workmanship for a period of one year (or other period if specified) from date of sale by OMRON.

OMRON MAKES NO WARRANTY OR REPRESENTATION, EXPRESS OR IMPLIED, REGARDING NON-INFRINGEMENT, MERCHANTABILITY, OR FITNESS FOR PARTICULAR PURPOSE OF THE PRODUCTS. ANY BUYER OR USER ACKNOWLEDGES THAT THE BUYER OR USER ALONE HAS DETERMINED THAT THE PRODUCTS WILL SUITABLY MEET THE REQUIREMENTS OF THEIR INTENDED USE. OMRON DISCLAIMS ALL OTHER WARRANTIES, EXPRESS OR IMPLIED.

LIMITATIONS OF LIABILITY

OMRON SHALL NOT BE RESPONSIBLE FOR SPECIAL, INDIRECT, OR CONSEQUENTIAL DAMAGES, LOSS OF PROFITS OR COMMERCIAL LOSS IN ANY WAY CONNECTED WITH THE PRODUCTS, WHETHER SUCH CLAIM IS BASED ON CONTRACT, WARRANTY, NEGLIGENCE, OR STRICT LIABILITY.

In no event shall the responsibility of OMRON for any act exceed the individual price of the product on which liability is asserted.

IN NO EVENT SHALL OMRON BE RESPONSIBLE FOR WARRANTY, REPAIR, OR OTHER CLAIMS REGARDING THE PRODUCTS UNLESS OMRON'S ANALYSIS CONFIRMS THAT THE PRODUCTS WERE PROPERLY HANDLED, STORED, INSTALLED, AND MAINTAINED AND NOT SUBJECT TO CONTAMINATION, ABUSE, MISUSE, OR INAPPROPRIATE MODIFICATION OR REPAIR.

Application Considerations

SUITABILITY FOR USE

OMRON shall not be responsible for conformity with any standards, codes, or regulations that apply to the combination of products in the customer's application or use of the products.

At the customer's request, OMRON will provide applicable third party certification documents identifying ratings and limitations of use that apply to the products. This information by itself is not sufficient for a complete determination of the suitability of the products in combination with the end product, machine, system, or other application or use.

The following are some examples of applications for which particular attention must be given. This is not intended to be an exhaustive list of all possible uses of the products, nor is it intended to imply that the uses listed may be suitable for the products:

- Outdoor use, uses involving potential chemical contamination or electrical interference, or conditions or uses not described in this catalog.
- Nuclear energy control systems, combustion systems, railroad systems, aviation systems, medical equipment, amusement machines, vehicles, safety equipment, and installations subject to separate industry or government regulations.
- Systems, machines, and equipment that could present a risk to life or property.

Please know and observe all prohibitions of use applicable to the products.

NEVER USE THE PRODUCTS FOR AN APPLICATION INVOLVING SERIOUS RISK TO LIFE OR PROPERTY WITHOUT ENSURING THAT THE SYSTEM AS A WHOLE HAS BEEN DESIGNED TO ADDRESS THE RISKS, AND THAT THE OMRON PRODUCTS ARE PROPERLY RATED AND INSTALLED FOR THE INTENDED USE WITHIN THE OVERALL EQUIPMENT OR SYSTEM.

PROGRAMMABLE PRODUCTS

OMRON shall not be responsible for the user's programming of a programmable product, or any consequence thereof.

Disclaimers

CHANGE IN SPECIFICATIONS

Product specifications and accessories may be changed at any time based on improvements and other reasons.

It is our practice to change model numbers when published ratings or features are changed, or when significant construction changes are made. However, some specifications of the products may be changed without any notice. When in doubt, special model numbers may be assigned to fix or establish key specifications for your application on your request. Please consult with your OMRON representative at any time to confirm actual specifications of purchased products.

DIMENSIONS AND WEIGHTS

Dimensions and weights are nominal and are not to be used for manufacturing purposes, even when tolerances are shown.

PERFORMANCE DATA

Performance data given in this catalog is provided as a guide for the user in determining suitability and does not constitute a warranty. It may represent the result of OMRON's test conditions, and the users must correlate it to actual application requirements. Actual performance is subject to the OMRON Warranty and Limitations of Liability.

ERRORS AND OMISSIONS

The information in this document has been carefully checked and is believed to be accurate; however, no responsibility is assumed for clerical, typographical, or proofreading errors, or omissions.