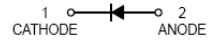


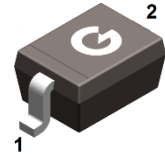
### Features

- Small surface mounting type
- High speed switching
- High reliability

HF



1 CATHODE 2 ANODE



SOD-323

### Mechanical Data

- Case: SOD-323
- Molding Compound: UL Flammability Classification Rating 94V-0
- Terminals: Matte tin-plated leads; solderability-per MIL-STD-202, Method 208

### Ordering Information

Part Number	Package	Shipping Quantity	Marking Code
1SS355	SOD-323	3000 pcs / Tape & Reel	A

### Maximum Ratings (@ T<sub>A</sub> = 25°C unless otherwise specified)

Parameter	Symbol	Value	Unit
Non-Repetitive Peak Reverse Voltage	V <sub>RM</sub>	90	V
DC Blocking Voltage	V <sub>R</sub>	80	V
Average Rectified Output Current	I <sub>o</sub>	100	mA
Non-repetitive Peak Forward Surge Current, t = 1s	I <sub>FSM</sub>	0.5	A

### Thermal Characteristics

Parameter	Symbol	Value	Unit
Power Dissipation	P <sub>D</sub>	200	mW
Thermal Resistance Junction-to-Air <sup>*1</sup>	R <sub>θJA</sub>	315	°C/W
Thermal Resistance Junction-to-Lead <sup>*1</sup>	R <sub>θJL</sub>	260	°C/W
Thermal Resistance Junction-to-Case <sup>*1</sup>	R <sub>θJC</sub>	230	°C/W
Operating Junction Temperature Range	T <sub>J</sub>	-55 ~ +150	°C
Storage Temperature Range	T <sub>STG</sub>	-55 ~ +150	°C

Note 1: The data tested by surface mounted on a 1 inch<sup>2</sup> FR-4 board with 2OZ copper

### Electrical Characteristics (@ $T_A = 25^\circ\text{C}$ unless otherwise specified)

Parameter	Symbol	Test Condition	Min.	Typ.	Max.	Unit
Reverse Breakdown Voltage	$V_{(BR)R}$	$I_R = 100\mu\text{A}$	80	-	-	V
Forward Voltage	$V_F$	$I_F = 100\text{mA}$	-	-	1.2	V
Maximum Peak Reverse Current	$I_R$	$V_R = 80\text{V}$	-	-	0.1	$\mu\text{A}$
Total Capacitance	$C_J$	$V_R = 0.5\text{V}, f = 1.0\text{MHz}$	-	-	3	pF
Reverse Recovery Time	$t_{rr}$	$I_F = I_R = 10\text{mA}$ $I_{rr} = 0.1 \times I_R, R_L = 100\Omega$	-	-	4	ns

### Ratings and Characteristics Curves (@ $T_A = 25^\circ\text{C}$ unless otherwise specified)

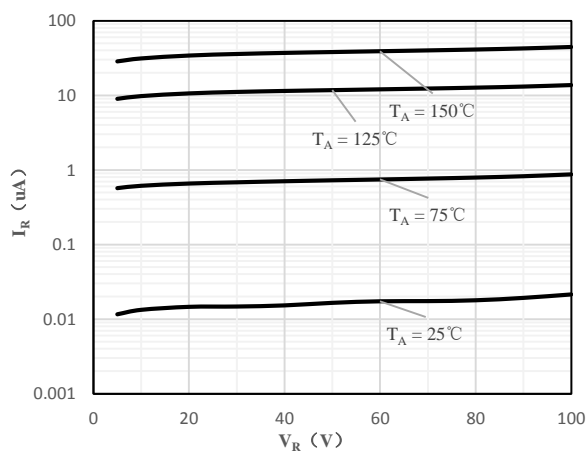


Fig 1 Typical Reverse Characteristic

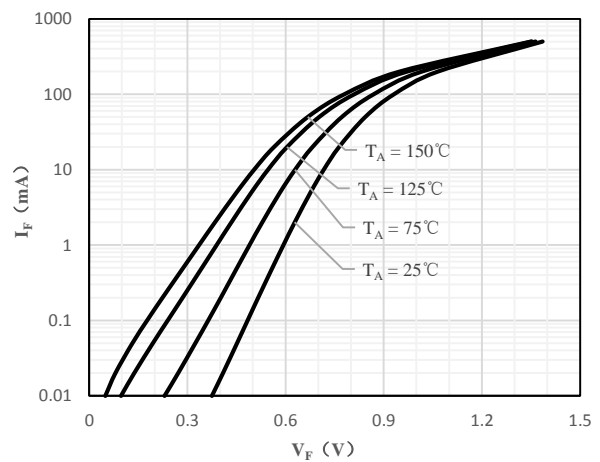


Fig 2 Typical Forward Characteristics

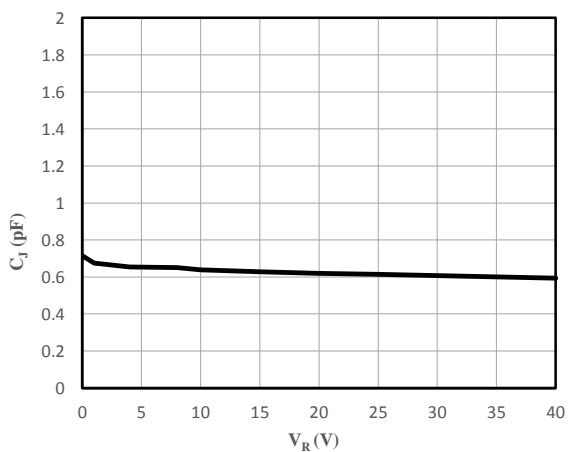
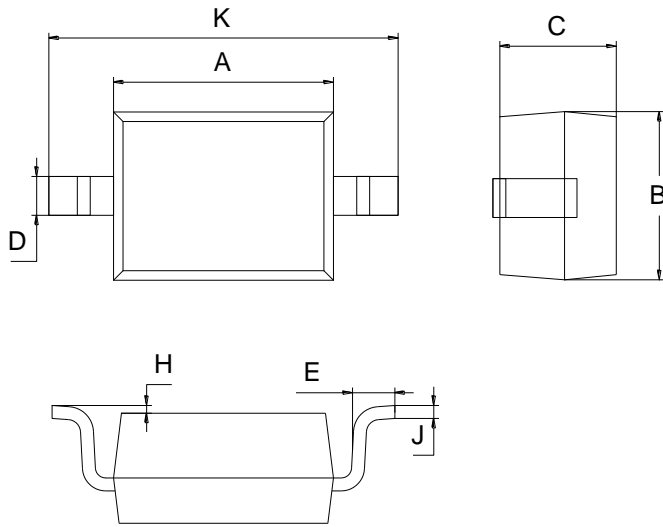


Fig 3 Capacitance vs. Reverse Voltage

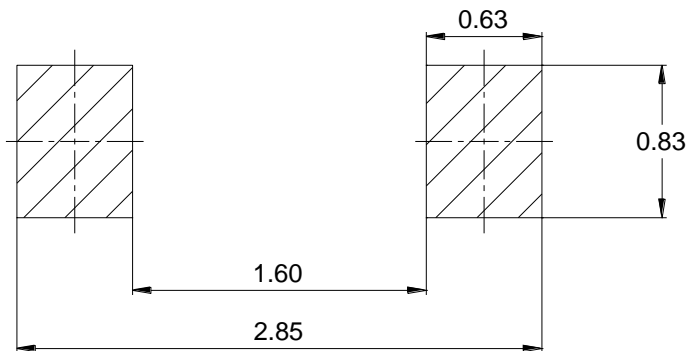
**Package Outline Dimensions** (Unit: mm)



SOD-323		
Dimension	Min.	Max.
A	1.60	1.80
B	1.20	1.40
C	0.80	0.90
D	0.25	0.35
E	0.22	0.42
H	0.02	0.10
J	0.05	0.15
K	2.55	2.75

**Mounting Pad Layout** (Unit: mm)

**SOD-323**



**Important Notice**

Changzhou Galaxy Century Microelectronics (GME) reserves the right to make changes without further notice to any product information (copyrighted) herein to make corrections, modifications, improvements, or other changes. GME does not assume any liability arising out of the application or use of any product described herein; neither does it convey any license under its patent rights, nor the rights of others.