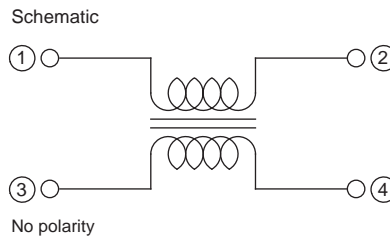
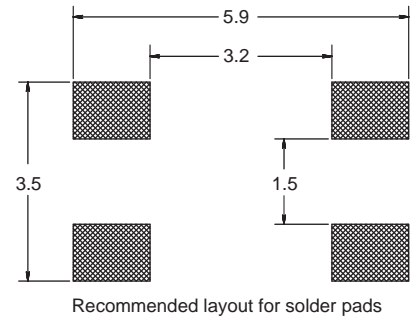
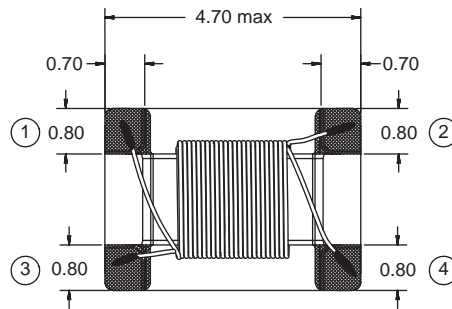
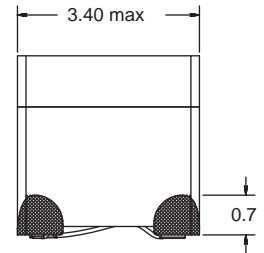
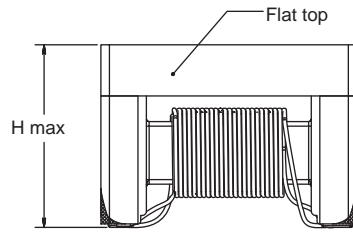
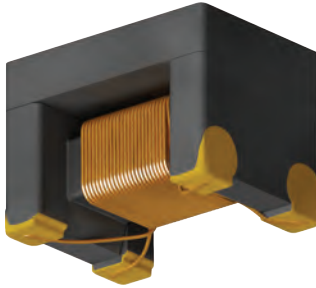


1812 CMF

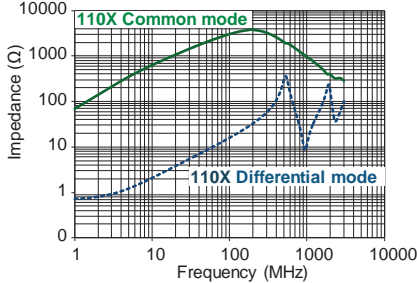
Common Mode Filter
CAN bus



Common Mode Filter Chip Inductors

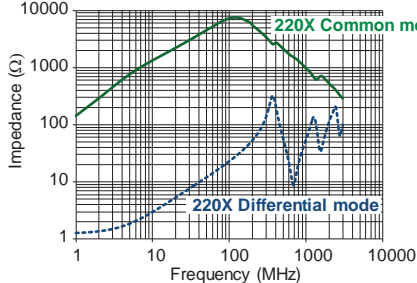
1812CMF-110X

Typical |Z| vs Frequency (f)



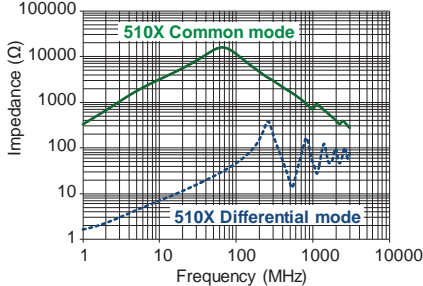
1812CMF-220X

Typical |Z| vs Frequency (f)



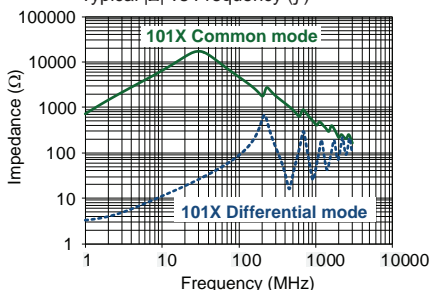
1812CMF-510X

Typical |Z| vs Frequency (f)



1812CMF-101X

Typical |Z| vs Frequency (f)



Part No	Impedance Z (Ω)		f _z (MHz)	Inductance L (μH)	Tol ± (%)	f _L (kHz)	Leakage Inductance (μH) typ	DCR max (Ω)	Rated DC Current (mA)	Dimension H max
	min	typ								
1812CMF-110X-YY	300	600	10	11	+50/-30	100	0.05	0.5	250	3.15
1812CMF-220X-YY	500	1200	10	22	+50/-30	100	0.08	0.7	200	3.15
1812CMF-510X-YY	1000	2800	10	51	+50/-30	100	0.15	0.9	200	3.15
* 1812CMF-101X-YY	2000	5800	10	100	+50/-30	100	0.20	2.0	150	3.25

Core Material: Ferrite

Top Material: Magnetically shielded

SPQ: Taped / Reel 600 [-01]
2200 [-04]

Remarks: - Unlisted inductance values available upon request.

- Rated Volt = 50 Vdc.

- Insulation Resistance = 10 MΩ min.

- * indicated approved according to IEC62228-3, Annex D and CiA 110.

Revision date: 25 May 2022