

DATE	DRAWN	CHKD	SCALE
18JUN92	JGK		3/4

DRAWING NUMBER
J-C5-1

ASSEMBLY PART NUMBERS AND DESCRIPTION

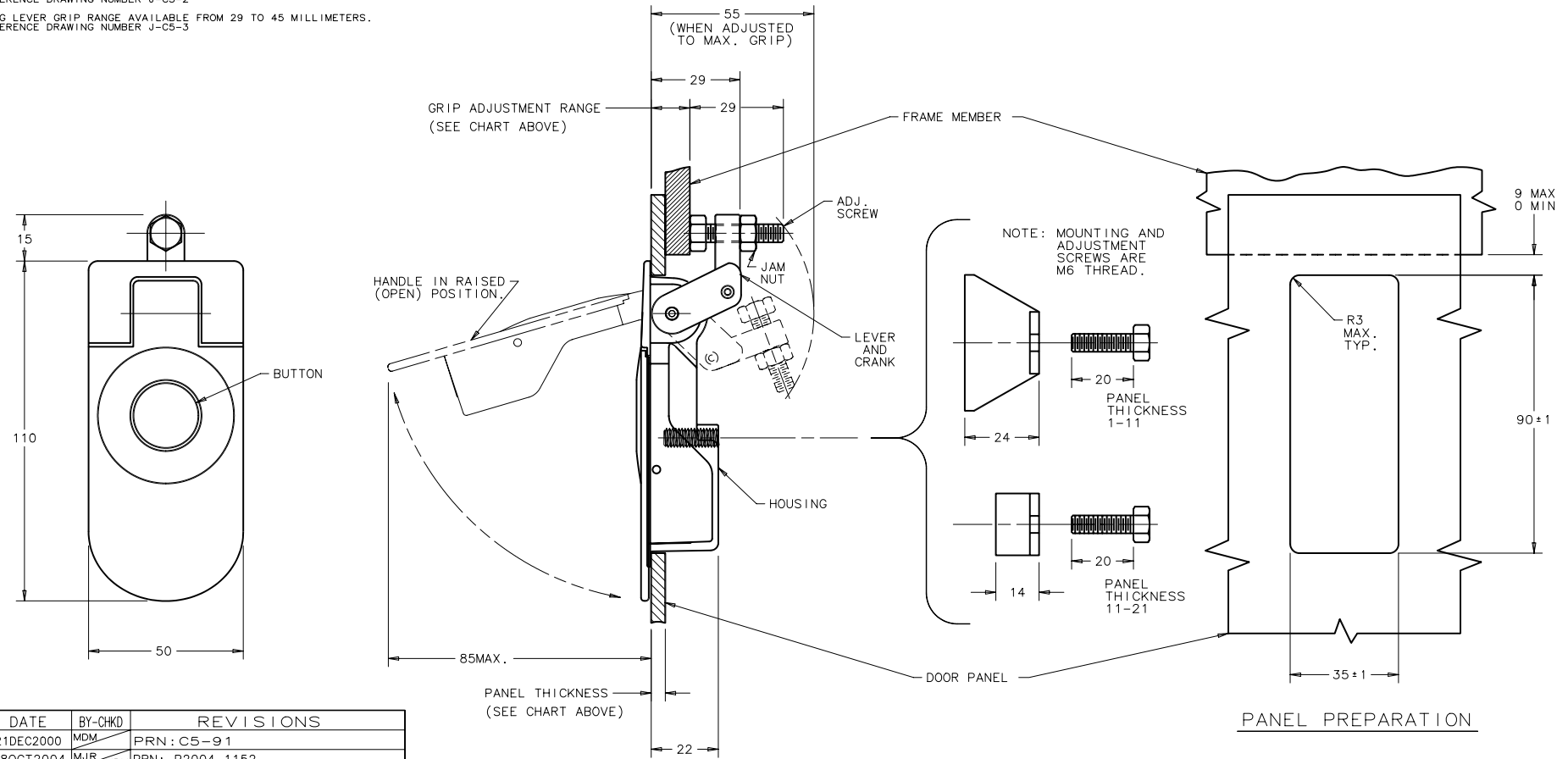
PANEL THICKNESS	SHORT LEVER GRIP RANGE*	BLACK ASSEMBLY WITH PLATED STEEL HARDWARE	BLACK ASSEMBLY WITH STAINLESS STEEL HARDWARE	SILVER ASSEMBLY WITH PLATED STEEL HARDWARE	SILVER ASSEMBLY WITH STAINLESS STEEL HARDWARE	CARDINAL WHITE ASSEMBLY WITH STEEL HARDWARE	CARDINAL WHITE ASSEMBLY WITH STAINLESS STEEL HARDWARE
1-11	1-14	C5-11-15	C5-11-16	C5-11-13	C5-11-14	C5-11-11	C5-11-12
11-21		C5-12-15	C5-12-16	C5-12-13	C5-12-14	C5-12-11	C5-12-12

* MEDIUM LEVER GRIP RANGE AVAILABLE FROM 14 TO 29 MILLIMETERS. REFERENCE DRAWING NUMBER J-C5-2
 LONG LEVER GRIP RANGE AVAILABLE FROM 29 TO 45 MILLIMETERS. REFERENCE DRAWING NUMBER J-C5-3

MATERIAL AND FINISH

LATCH ASSEMBLY CONSISTS OF:
 HOUSING, HANDLE AND BUTTON:
 DIE CAST ZINC, SEE TABLE FOR FINISH.
 LEVER AND CRANK: DIE CAST ZINC, COATED WITH CLEAR CHEMICAL PROTECTIVE FILM.
 BLACK TORSION SPRING: 303 STAINLESS STEEL, PASSIVATED.
 ROLL PINS: 420 STAINLESS STEEL, PASSIVATED.
 O-RINGS: BUNA-N RUBBER, NATURAL.

HARDWARE CONSISTS OF:
 MOUNTING BRACKET
 MOUNTING SCREW
 ADJUSTING SCREW
 JAM NUT
 1010 STEEL, ZINC PLATED WITH SEALED CHROMATE.
 OR
 300 SERIES STAINLESS STEEL, PASSIVATED.



REV.	DATE	BY-CHKD	REVISIONS
D	21DEC2000	MDM	PRN: C5-91
E	08OCT2004	MJR MDY	PRN: P2004-1152

PANEL PREPARATION

THIRD ANGLE PROJECTION,
 ALL DIMENSIONS ARE MILLIMETERS.

PROPRIETARY ITEM - EXCEPT FOR USES EXPRESSLY GRANTED IN WRITING INFORMATION IS UNCLASSIFIED AND ALL RIGHTS IN PATENT AND OTHER INTEL. ARE RESERVED BY SOUTHCO, INC.

FORMATB 2/88