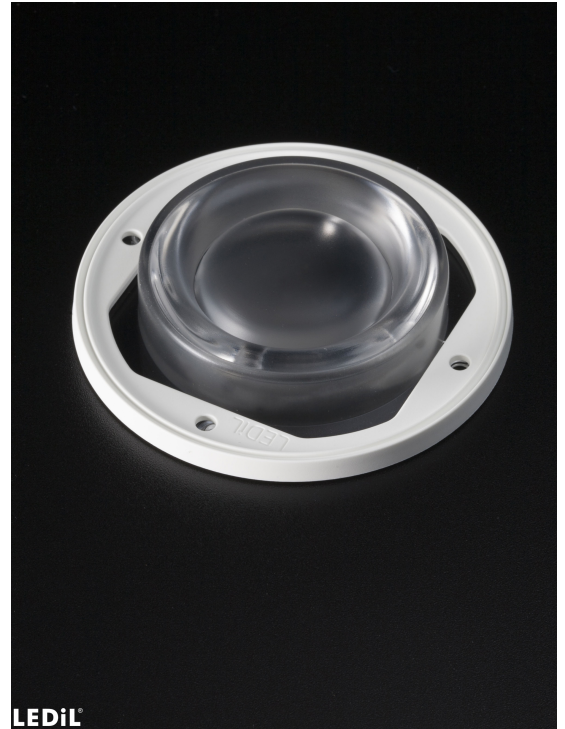


## STELLA-HB

~75° high bay beam for warehouse and outdoor lighting. Compatible with up to 30 mm LES size COBs. Variant with white frame.

### SPECIFICATION:

Dimensions	Ø 90.0 mm
Height	19.5 mm
Fastening	screw
Ingress protection classes	IP67
ROHS compliant	yes ⓘ

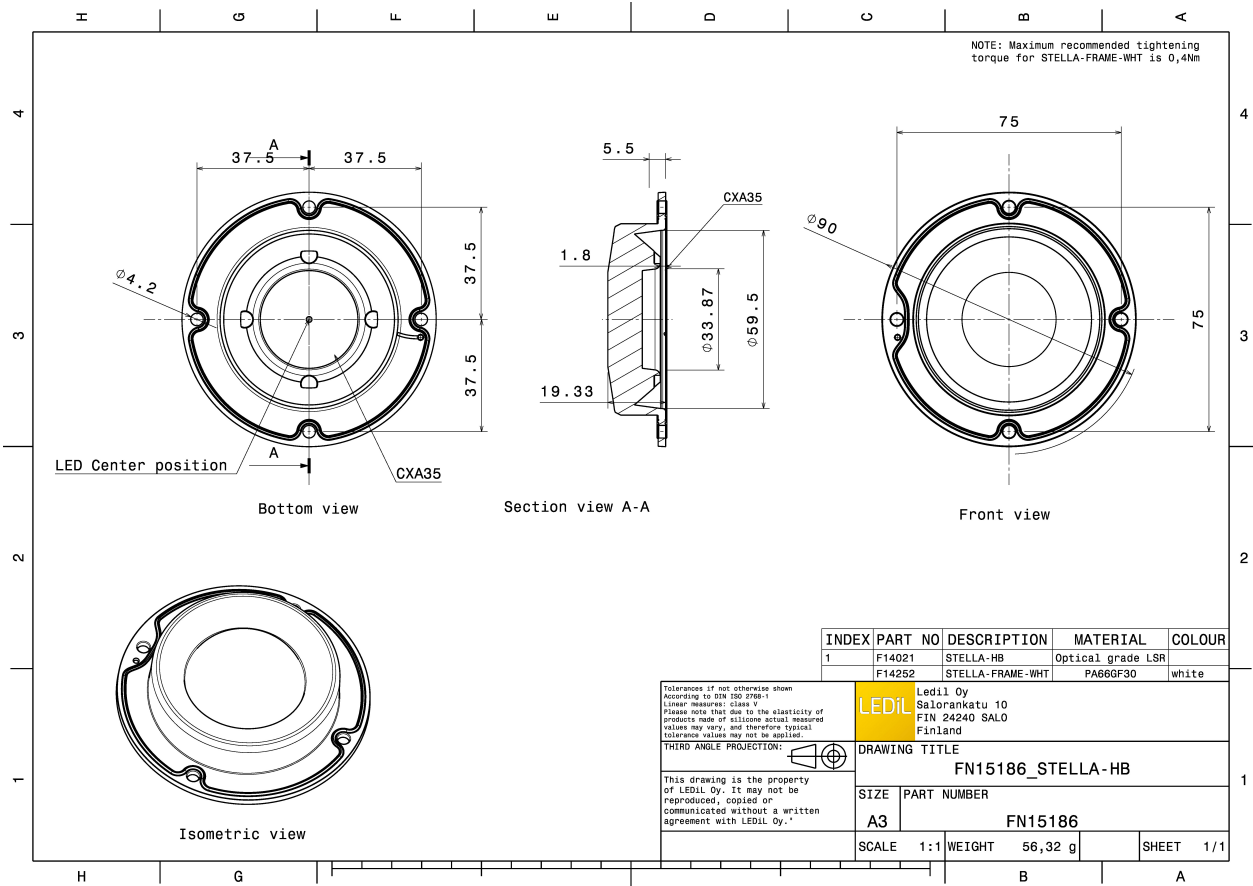


### MATERIALS:

Component	Type	Material	Colour	Finish	Length
STELLA-HB	Single lens	Silicone	clear		85.0
STELLA-FRAME-WHT	Holder	PA66	white		90.0

### ORDERING INFORMATION:

Component		Qty in box	MOQ	MPQ	Box weight (kg)
FN15186_STELLA-HB	Single lens	135	135	15	7.9
» Box size: 480 x 280 x 300 mm					

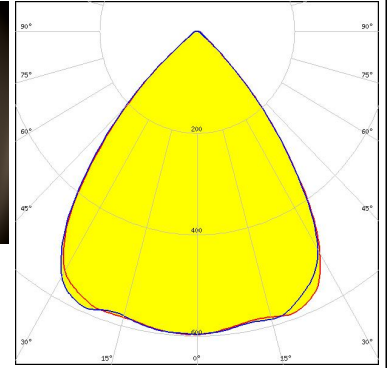


See also our general installation guide: [www.ledil.com/installation\\_guide](http://www.ledil.com/installation_guide)

### OPTICAL RESULTS (MEASURED):

bridgelux

LED V18 Gen7  
FWHM / FWTM 79.0° / 100.0°  
Efficiency 93 %  
Peak intensity 0.6 cd/lm  
LEDs/each optic 1  
Light colour/type White  
Required components:



Light distribution files

bridgelux

LED VERO18  
FWHM / FWTM 75.0° / 96.0°  
Efficiency 93 %  
Peak intensity 0.7 cd/lm  
LEDs/each optic 1  
Light colour/type White  
Required components:

Light distribution files

bridgelux

LED VERO29  
FWHM / FWTM 69.0° / 104.0°  
Efficiency 94 %  
Peak intensity 0.7 cd/lm  
LEDs/each optic 1  
Light colour/type White  
Required components:

Light distribution files

### OPTICAL RESULTS (MEASURED):

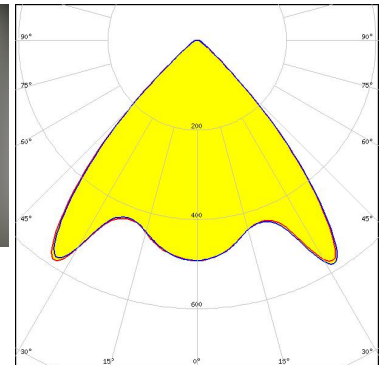
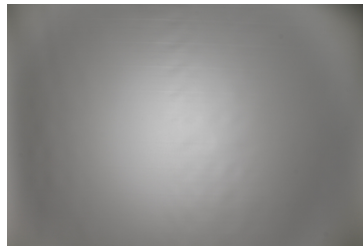
#### CITIZEN

LED	CLL163
FWHM / FWTM	79.0° / 98.0°
Efficiency	94 %
Peak intensity	0.6 cd/m
LEDs/each optic	1
Light colour/type	White
Required components:	

Light distribution files



LED	CXA/B 1816 & CXA/B 1820 & CXA 1850
FWHM / FWTM	87.0° / 104.0°
Efficiency	93 %
Peak intensity	0.6 cd/m
LEDs/each optic	1
Light colour/type	White
Required components:	



Light distribution files



LED	CXA/B 25xx
FWHM / FWTM	83.0° / 102.0°
Efficiency	93 %
Peak intensity	0.6 cd/m
LEDs/each optic	1
Light colour/type	White
Required components:	

### OPTICAL RESULTS (MEASURED):



LED CXA/B 30xx  
FWHM / FWTM 78.0° / 103.0°  
Efficiency 93 %  
Peak intensity 0.6 cd/lm  
LEDs/each optic 1  
Light colour/type White  
Required components:



LED CXA/B 3590  
FWHM / FWTM 72.0° / 106.0°  
Efficiency 93 %  
Peak intensity 0.7 cd/lm  
LEDs/each optic 1  
Light colour/type White  
Required components:



LED LTPL-M074  
FWHM / FWTM 76.0° / 100.0°  
Efficiency 93 %  
Peak intensity 0.7 cd/lm  
LEDs/each optic 1  
Light colour/type White  
Required components:

Light distribution files

### OPTICAL RESULTS (MEASURED):



LED LUXEON CoB 1211  
FWHM / FWTM 71.0° / 93.0°  
Efficiency 93 %  
Peak intensity 0.7 cd/lm  
LEDs/each optic 1  
Light colour/type White  
Required components:

[Light distribution files](#)



LED LUXEON CoB 1213/1216/1812  
FWHM / FWTM 72.0° / 99.0°  
Efficiency 94 %  
Peak intensity 0.7 cd/lm  
LEDs/each optic 1  
Light colour/type White  
Required components:



LED CxM-18 (21.5x21.5)  
FWHM / FWTM 80.0° / 100.0°  
Efficiency 93 %  
Peak intensity 0.6 cd/lm  
LEDs/each optic 1  
Light colour/type White  
Required components:

[Light distribution files](#)

### OPTICAL RESULTS (MEASURED):

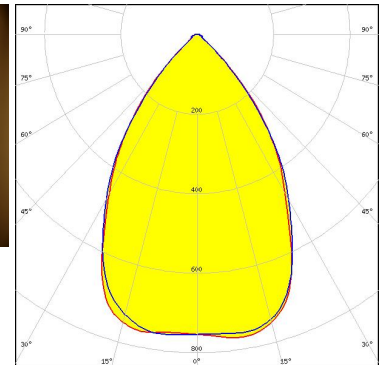
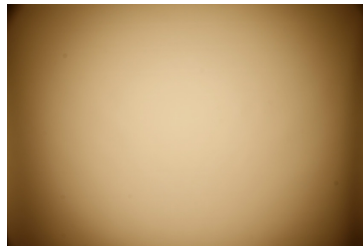


LED CxM-22 (28x28)  
FWHM / FWTM 73.0° / 100.0°  
Efficiency 93 %  
Peak intensity 0.7 cd/lm  
LEDs/each optic 1  
Light colour/type White  
Required components:

Light distribution files



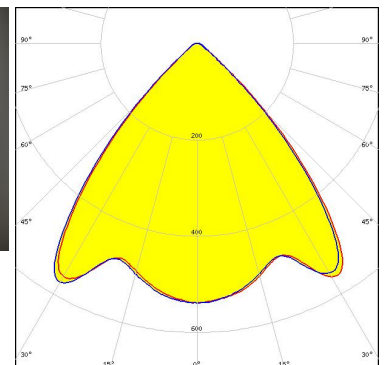
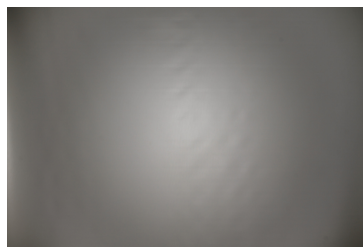
LED CxM-22 (28x28)  
FWHM / FWTM 68.0° / 97.0°  
Efficiency 94 %  
Peak intensity 0.8 cd/lm  
LEDs/each optic 1  
Light colour/type White  
Required components:  
Bender Wirth: 431 Typ L3



Light distribution files



LED COB J-Type  
FWHM / FWTM 85.0° / 103.0°  
Efficiency 94 %  
Peak intensity 0.6 cd/lm  
LEDs/each optic 1  
Light colour/type White  
Required components:



Light distribution files

### OPTICAL RESULTS (MEASURED):

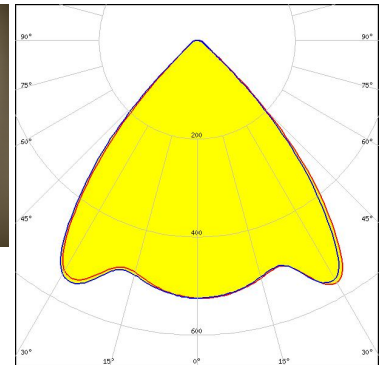
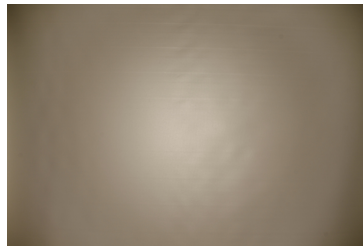
**OSRAM**  
Opto Semiconductors

LED Soleriq S19  
FWHM / FWTM 84.0° / 101.0°  
Efficiency 92 %  
Peak intensity 0.6 cd/lm  
LEDs/each optic 1  
Light colour/type White  
Required components:

Light distribution files

**SAMSUNG**

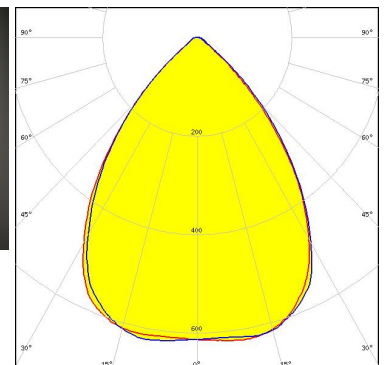
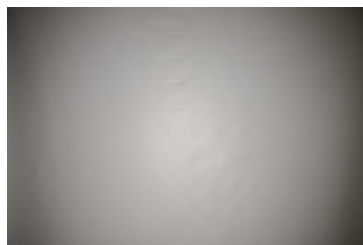
LED LC016D / LC019D / LC026D / LC033D  
FWHM / FWTM 84.0° / 102.0°  
Efficiency 93 %  
Peak intensity 0.6 cd/lm  
LEDs/each optic 1  
Light colour/type White  
Required components:



Light distribution files

**SAMSUNG**


LED LC040D / LC060D / LC080D  
FWHM / FWTM 77.0° / 104.0°  
Efficiency 94 %  
Peak intensity 0.6 cd/lm  
LEDs/each optic 1  
Light colour/type White  
Required components:

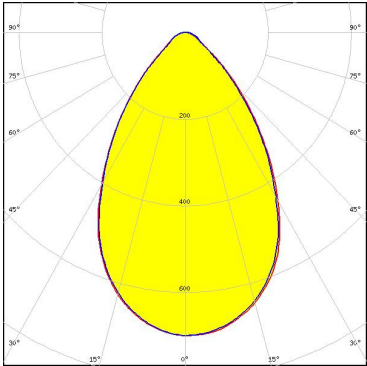


Light distribution files



### OPTICAL RESULTS (MEASURED):

 SEMI SEOUL SEMICONDUCTOR		
LED	MJT COB LES 33	
FWHM / FWTM	68.0° / 107.0°	
Efficiency	94 %	
Peak intensity	0.7 cd/lm	
LEDs/each optic	1	
Light colour/type	White	
Required components:		
Bender Wirth: 458 Typ L4		

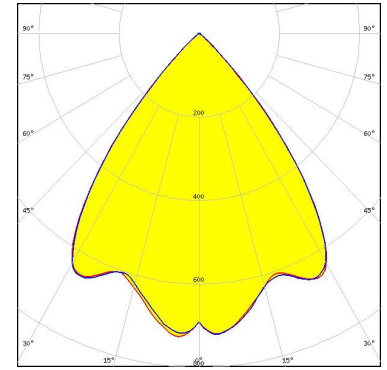


Light distribution files

### OPTICAL RESULTS (SIMULATED):

#### CITIZEN

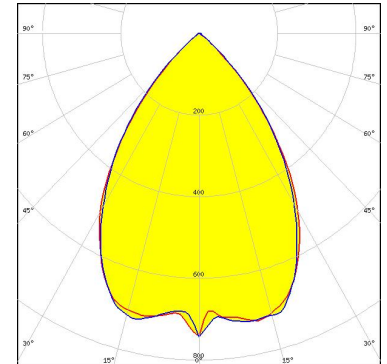
LED CLL03x/CLU03x  
FWHM / FWTM 77.0° / 94.0°  
Efficiency 96 %  
Peak intensity 0.7 cd/lm  
LEDs/each optic 1  
Light colour/type White  
Required components:



Light distribution files

#### CITIZEN

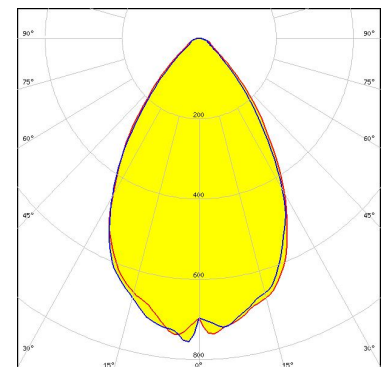
LED CLL04x/CLU04x  
FWHM / FWTM 71.0° / 97.0°  
Efficiency 91 %  
Peak intensity 0.7 cd/lm  
LEDs/each optic 1  
Light colour/type White  
Required components:



Light distribution files

#### CITIZEN

LED CLL05x/CLU05x  
FWHM / FWTM 66.0° / 102.0°  
Efficiency 92 %  
Peak intensity 0.8 cd/lm  
LEDs/each optic 1  
Light colour/type White  
Required components:



Light distribution files

### GENERAL INFORMATION:

NOTE: The typical beam angle will be changed by different color, chip size and chip position tolerance. The typical total beam angle is the full angle measured where the luminous intensity is half of the peak value.

Due to use of high power COB's with this product, special attention to proper thermal design is highly recommended. LEDiL has no liability for direct, indirect or consecutive damages arising from the LEDiL products being used outside of the recommended temperature range.

### MATERIALS:

As part of our continuous research and improvement processes, and to ensure the best possible quality and availability of our products, LEDiL reserves the right to change material grades without notice.

### PRODUCT DATA USER AGREEMENT AND DISCLAIMER:

The measured data in the provided downloadable LEDiL Product Datasheets and Mechanical 2D-Drawings is rounded and provided as reference for planning. LEDiL Oy's optical specifications have been verified by conducting performance testing of the products in accordance with the company's quality system. The reported data are averaged results of multiple measurements with typical variation. LEDiL Oy reserves the right to without prior notification make changes and improvements to its products.

LEDiL Oy assumes neither warranty, nor guarantee nor any other liability of any kind for the contents and correctness of the provided data. The provided data has been generated with highest diligence but the provided data may in reality not represent the complete possible variation range of all intrinsic parameters. Therefore, in certain cases a deviation from the provided data could occur.

LEDiL Oy reserves the right to undertake technical changes of its products without further notification which could lead to changes in the provided data. LEDiL Oy assumes no liability of any kind for the possible deviation from any provided data or any other damage resulting from the usage of the provided data.

The user agrees to this disclaimer and user agreement with the download or usage of the provided files.

#### LEDiL Oy

Joensuunkatu 13  
FI-24240 SALO  
Finland

#### LEDiL Inc.

228 West Page Street  
Suite D  
Sycamore IL 60178  
USA

#### Ledil Optics Technology (Shenzhen) Co., Ltd.

# 405 , Block B  
Casic Motor Building  
Shenzhen 518057  
P.R.CHINA

#### Local sales and technical support

[www.ledil.com/  
where\\_to\\_buy](http://www.ledil.com/where_to_buy)

#### Shipping locations

Poznan, Poland  
Hong Kong, China

#### Distribution Partners

[www.ledil.com/  
where\\_to\\_buy](http://www.ledil.com/where_to_buy)