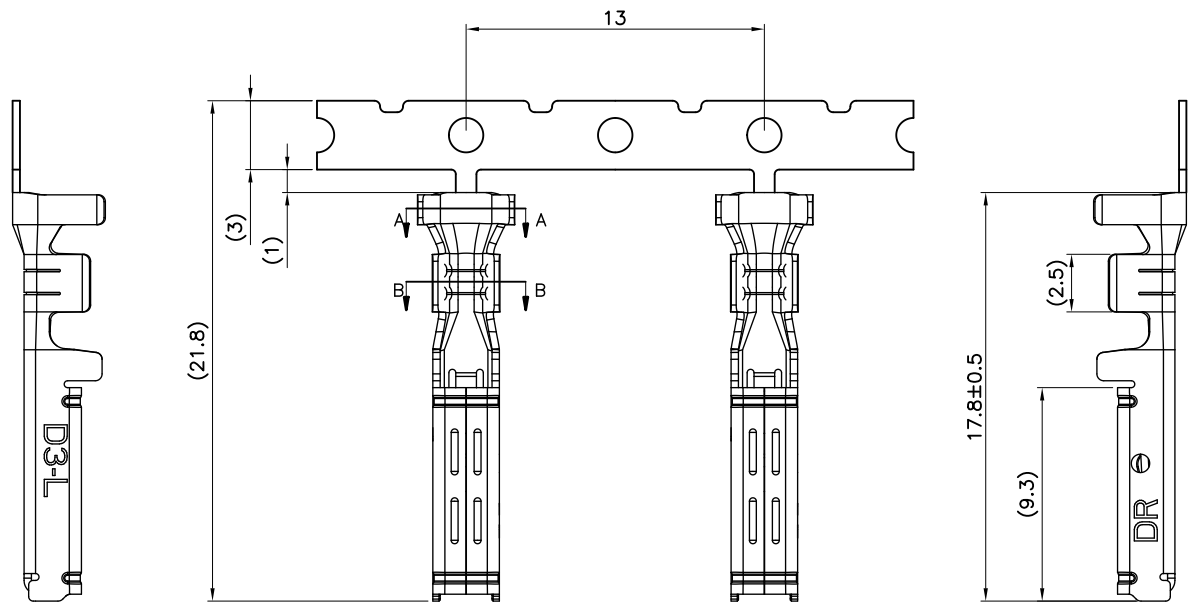
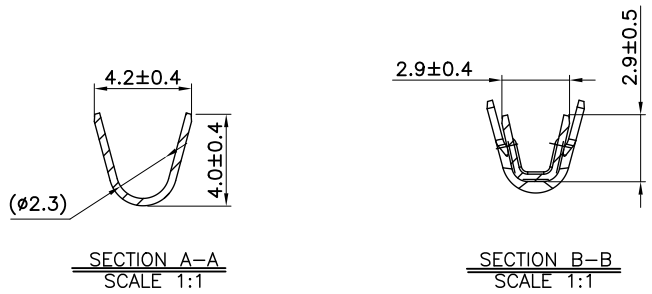
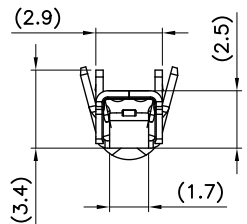


REV.	ECN NO.	LOCATION	DESCRIPTION	DATE	DESIGN
X1			INITIAL RELEASE	22,11,29	JACKY
X2			Modify plating specification	23,04,18	JACKY
X3			Add packaging drawings	23,07,13	JACKY



NOTES:

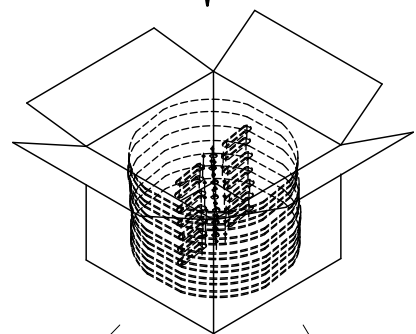
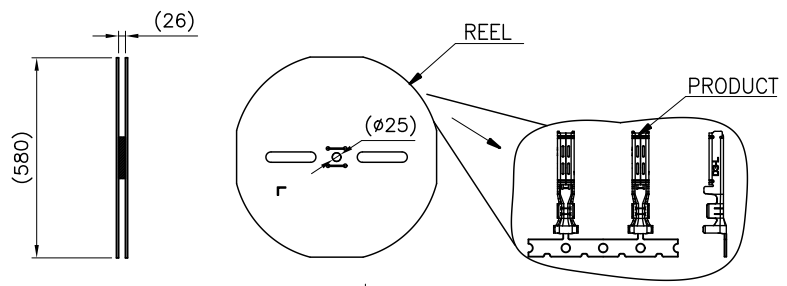
- MATERIAL: COPPER ALLOY
- FINISH:  
SEE PART NUMBER INFORMATION. Au PLATING ON CONTACT AREA.  
30u" [0.76um] MIN NICKEL UNDERPLATING ON ALLOVER AREA.
- WIRE RANGE: SEE PART NUMBER INFORMATION.
- CONTACT TYPE; LOW PRESSURE TYPE (FOR GENERAL)
- CONTACT TYPE; HIGH PRESSURE TYPE (FOR GENERAL)  
(FOR HIGH CURRENT OR ANTI-VIBRATION)
- GOLD PL. CONTACT AREA ONLY
- UNSPECIFIED TOLERANCE: X.±0.30 X.±3°  
.X±0.25 .X±3°  
.XX±0.20
- PART NUMBER INFORMATION:  
5600BG-003R \* \* R \* 0000  
RESERVE NUMBER  
BOX MARK:  
1: WITH DEREN LOGO  
2: WITHOUT DEREN LOGO  
PACKAGE CODE:  
R: REEL  
PLATING CODE:  
4: Au:15u"  
6: BRIGHT-TIN:ALL OVER AREA  
WIRE RANGE:  
1:16~20AWG(INSULATION DIA:φ1.8~2.8mm)



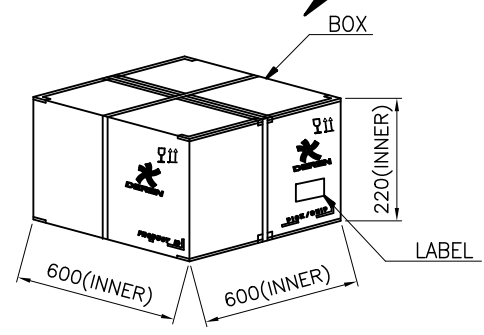
DIM	TOL	DIM	TOL	DEREN SHENZHEN DEREN ELECTRONIC CO., LTD			
X.	±0.30	X.	±2°	C-DWG:	DATE	TITLE: DR380 WIRE REC CONTACT PLATING	
.X	±0.25	.X	±1°			P/N: 5600BG-003R**R*0000	
.XX	±0.20			DRAW NO.	DESIGN: JACKY	23,07,13	SHEET: 1/2
				SC2309386-1	CHECK:		SCALE: N/A
				REV. X3	APPROVAL:		UNIT: mm

1 2 3 4 5 6 7 8

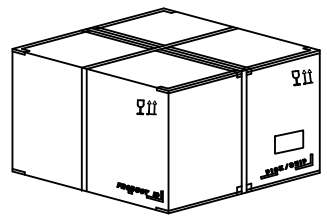
REV.	ECN NO.	LOCATION	DESCRIPTION	DATE	DESIGN
X1			INITIAL RELEASE	22,11,29	JACKY
X2			Modify plating specification	23,04,18	JACKY
X3			Add packaging drawings	23,07,13	JACKY




PART NO.	KPCS/REEL	REEL/BOX	KPCS/BOX
5600BG-003R**R*0000	4	5	20



WITH DEREN LOGO (BOX)



WITHOUT LOGO (BOX)

DIM	TOL	DIM	TOL	DEREN SHENZHEN DEREN ELECTRONIC CO., LTD				
X.	±0.30	X.	±2°		C-DWG:		DATE	TITLE: DR380 WIRE REC CONTACT PLATING
.X	±0.25	.X	±1°		DESIGN:	JACKY	23,07,13	P/N: 5600BG-003R**R*0000
.XX	±0.20			DRAW NO.	SC2309386-1	CHECK:		SHEET: 2/2
				REV.	X3	APPROVAL:		SCALE: N/A
								UNIT: mm

1 2 3 4 5 6 7 8