

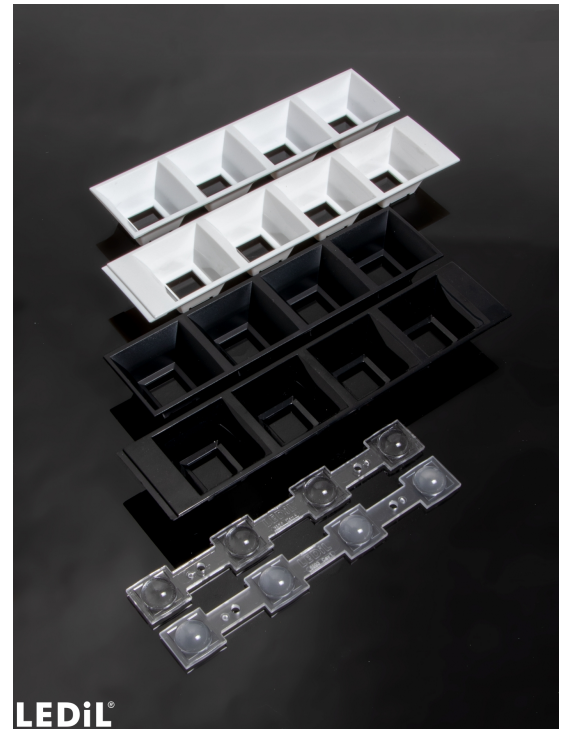
DAISY-4X1-WW

~80° wide beam

SPECIFICATION:

Dimensions	182.0 x 40.0 mm
Height	20.2 mm
Fastening	pin, screw, clips
ROHS compliant	yes ⓘ

MATERIALS:



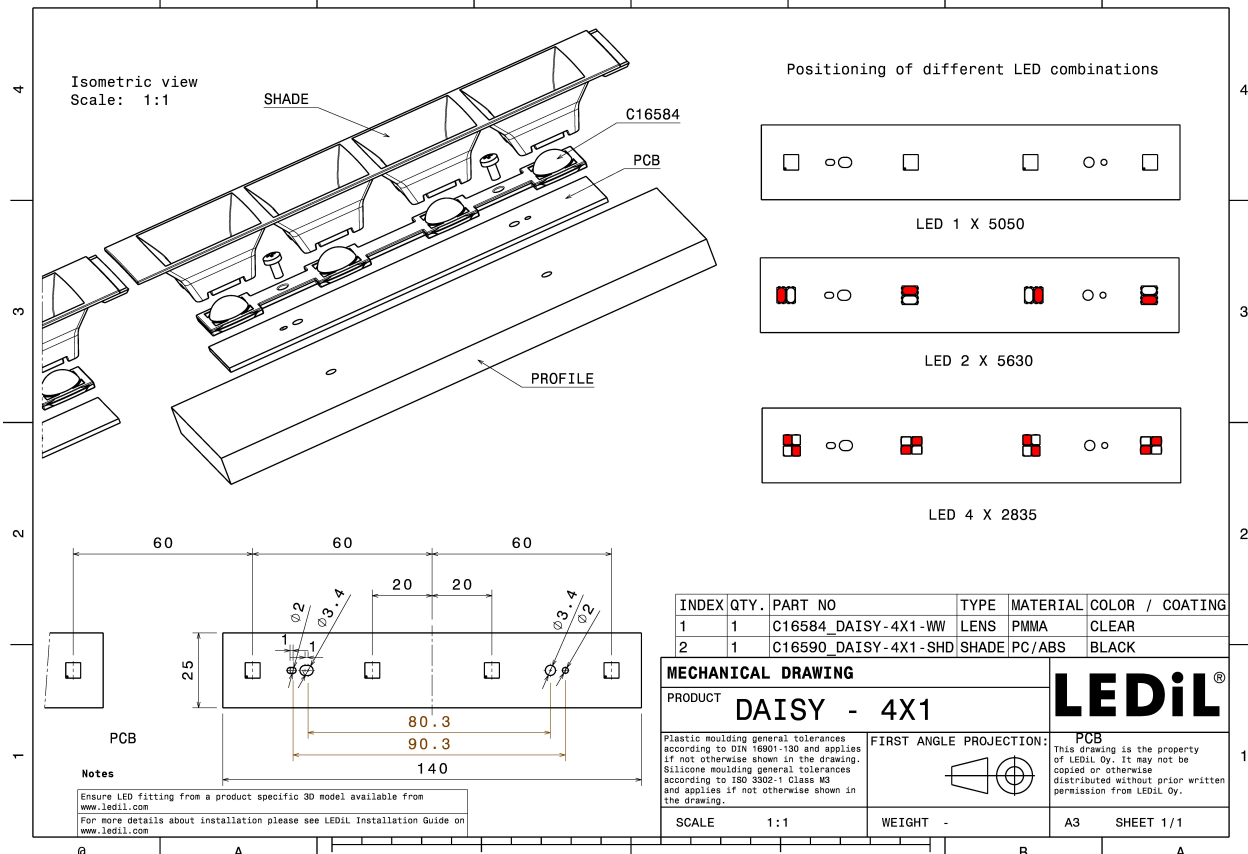
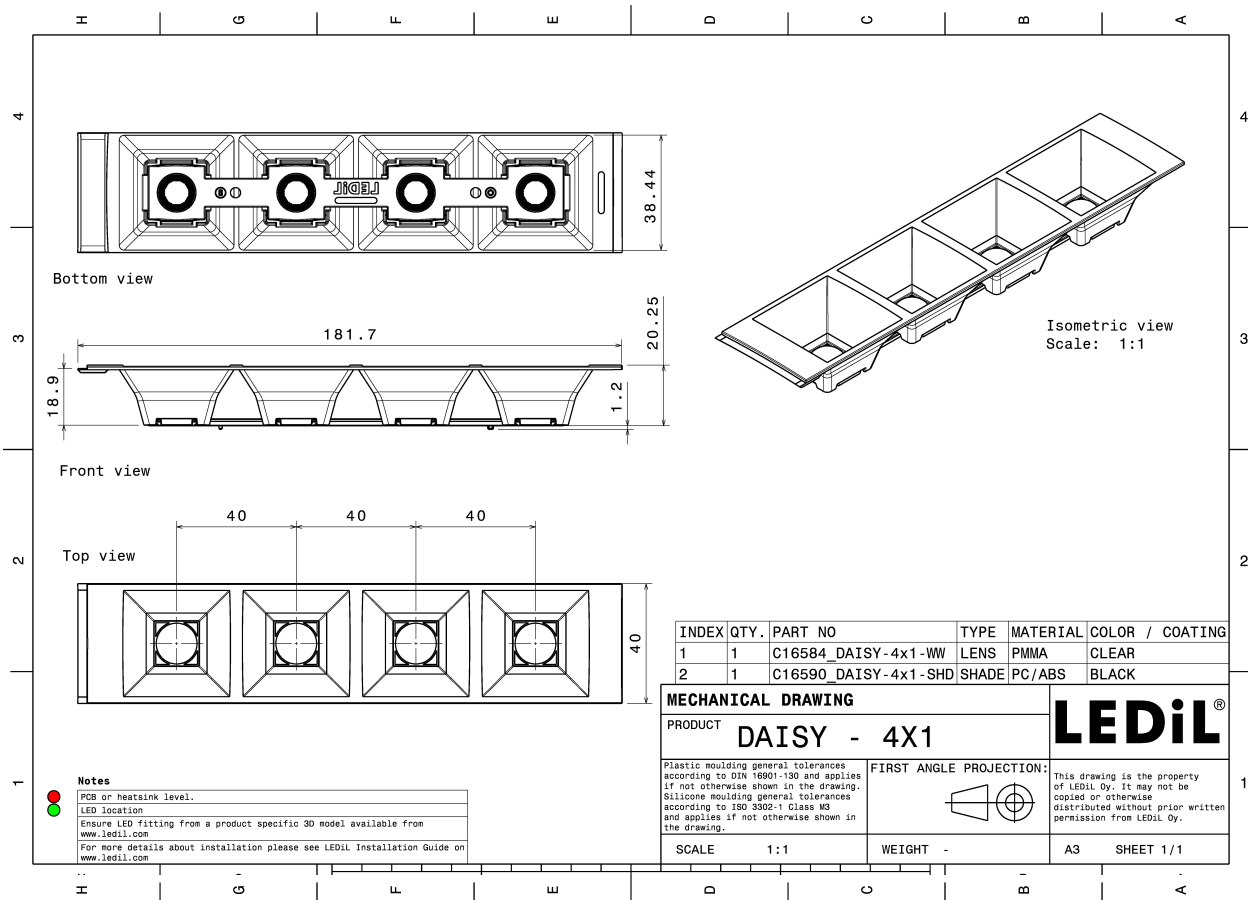
Component	Type	Material	Colour	Finish
C16584_DAISY-4X1-WW	Linear lens	PMMA	clear	
C19075_DAISY-4X1-SHD2	Shade	PC	black	gloss
C18414_DAISY-4X1-SHD-MET-MATT	Shade	PC	metal	matt
C18412_DAISY-4X1-SHD2-MET	Shade	PC	metal	gloss
C18411_DAISY-4X1-SHD2-MET-MATT	Shade	PC	metal	matt
C18407_DAISY-4X1-SHD-MET	Shade	PC	metal	gloss
C17423_DAISY-4X1-SHD2-WHT-MATT	Shade	PC	white	matt
C17422_DAISY-4X1-SHD2-MATT	Shade	PC	black	matt
C16784_DAISY-4X1-SHD-WHT	Shade	PC	white	gloss
C16590_DAISY-4X1-SHD	Shade	PC	black	gloss

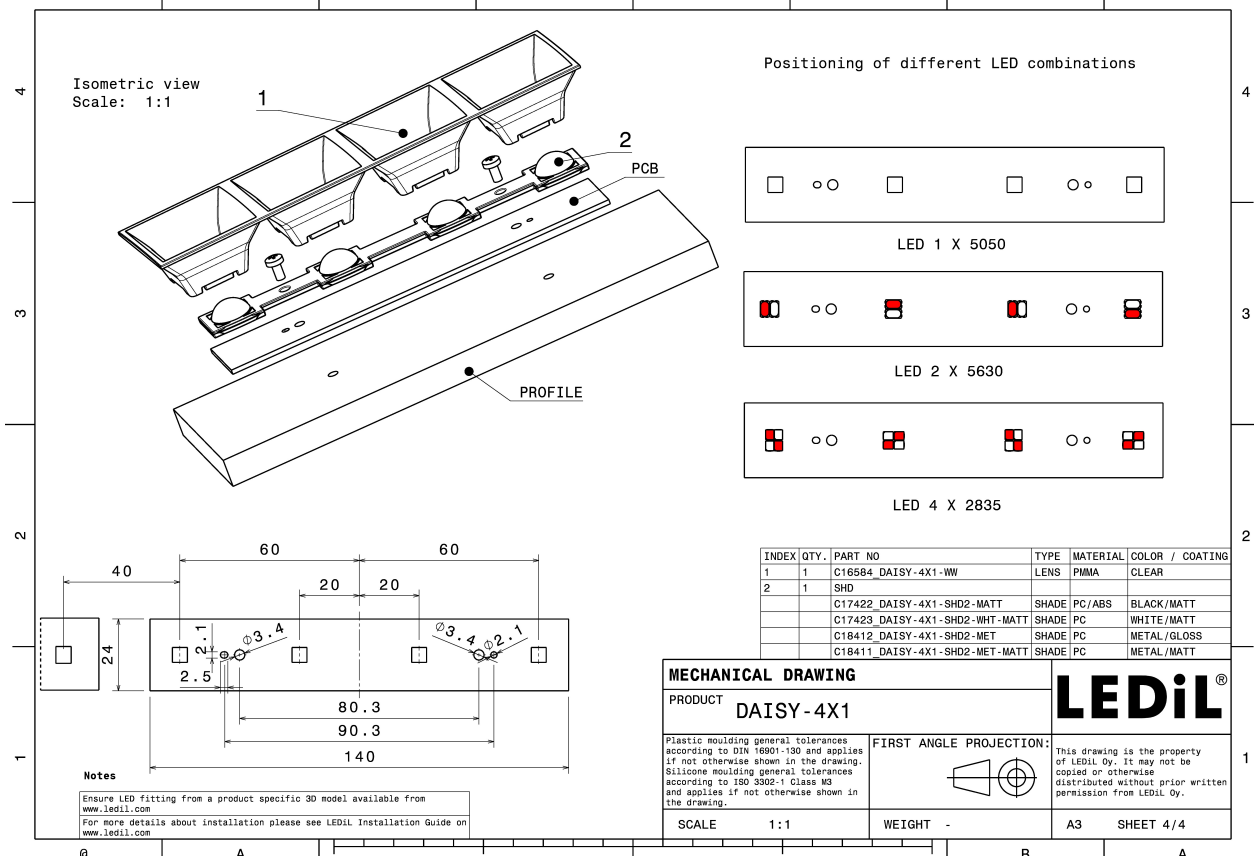
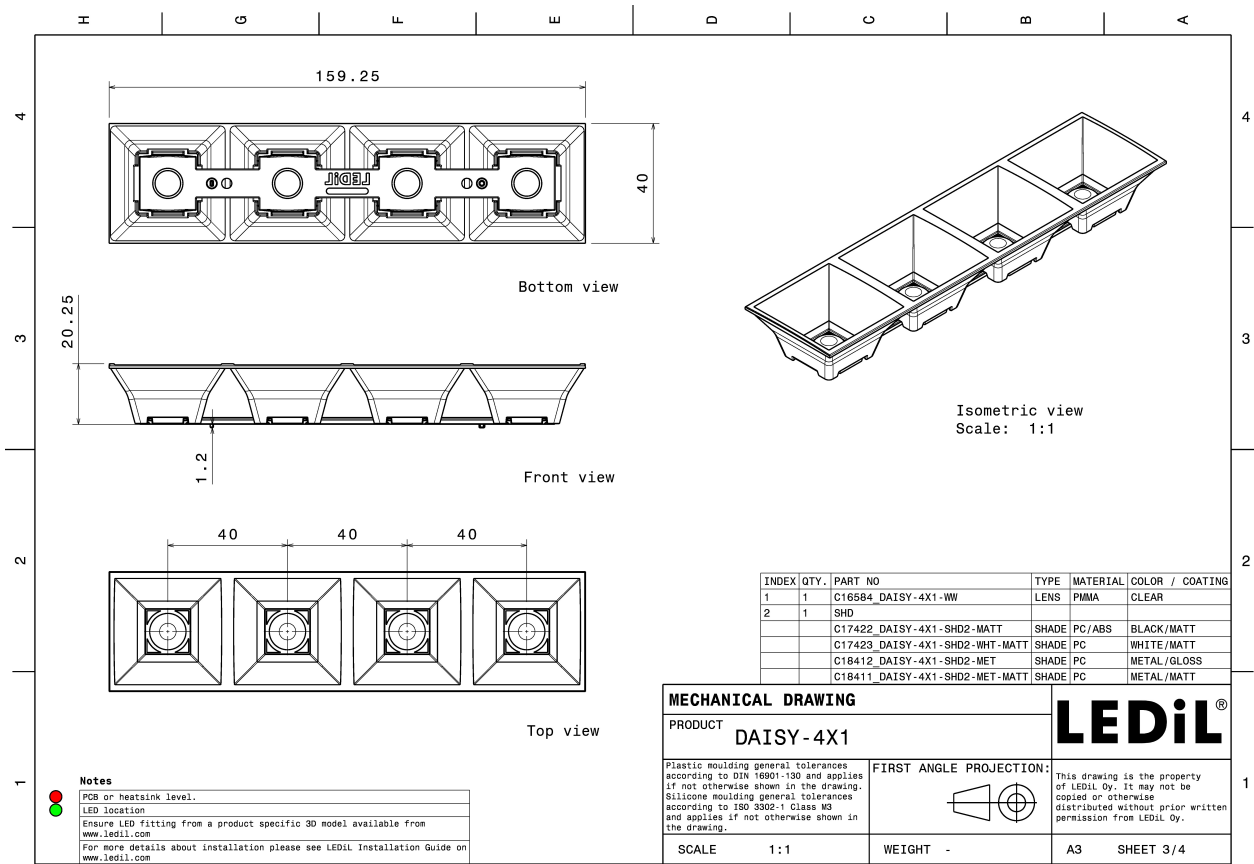
ORDERING INFORMATION:

Quantities for one set:

Linear lens	1
Shade	1

Component		Qty in box	MOQ	MPQ	Box weight (kg)
C16584_DAISY-4X1-WW » Box size: 480 x 280 x 300 mm	Linear lens	504	336	21	5.6
C18411_DAISY-4X1-SHD2-MET-MATT » Box size: 480 x 280 x 300 mm	Shade	168	336	42	4.7
C17422_DAISY-4X1-SHD2-MATT » Box size: 480 x 280 x 300 mm	Shade	168	336	42	4.7
C18412_DAISY-4X1-SHD2-MET » Box size: 480 x 280 x 300 mm	Shade	168	336	42	
C17423_DAISY-4X1-SHD2-WHT-MATT » Box size: 480 x 280 x 300 mm	Shade	168	336	42	4.9
C18414_DAISY-4X1-SHD-MET-MATT » Box size: 480 x 280 x 300 mm	Shade	168	336	42	4.3
C16590_DAISY-4X1-SHD » Box size: 480 x 280 x 300 mm	Shade	168	336	42	4.9
C18407_DAISY-4X1-SHD-MET » Box size: 480 x 280 x 300 mm	Shade	168	336	42	4.3
C19075_DAISY-4X1-SHD2 » Box size: 480 x 280 x 300 mm	Shade	168	336	42	4.4
C16784_DAISY-4X1-SHD-WHT » Box size: 480 x 280 x 300 mm	Shade	168	336	42	5.2



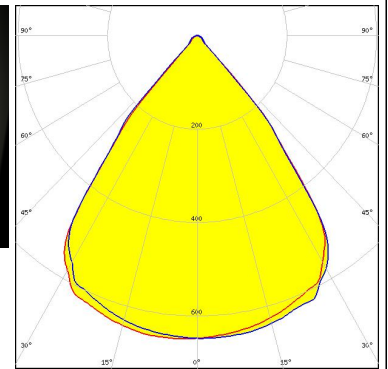


See also our general installation guide: www.ledil.com/installation_guide

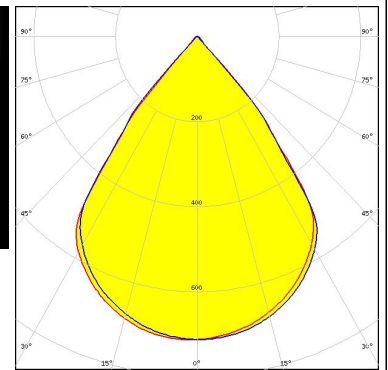
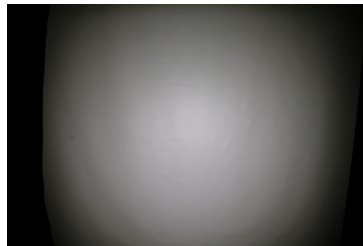
OPTICAL RESULTS (MEASURED):



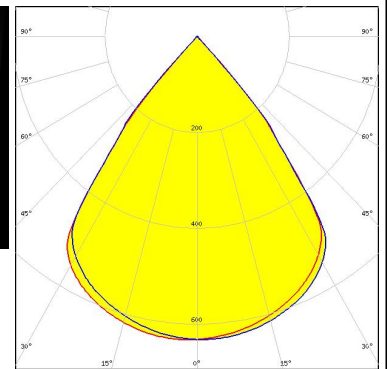
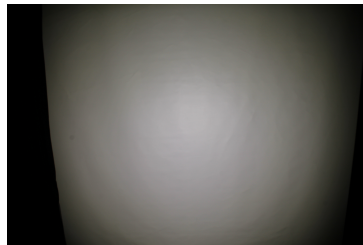
LED LIGHT ENGINE DAISY 16 LEDs 156mm x 20mm
FWHM / FWTM 76.0° / 87.5°
Efficiency 95 %
Peak intensity 0.7 cd/lm
LEDs/each optic 4
Light colour White
Required components:
C16784_DAISY-4X1-SHD-WHT



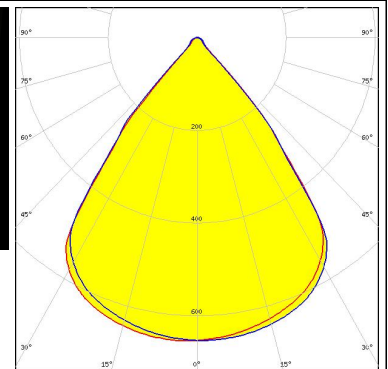
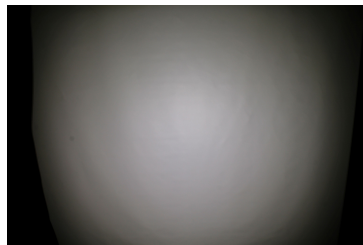
LED LIGHT ENGINE DAISY 16 LEDs 156mm x 20mm
FWHM / FWTM 75.0° / 87.0°
Efficiency 94 %
Peak intensity 0.7 cd/lm
LEDs/each optic 4
Light colour White
Required components:
C17535_DAISY-4X1-SHD2-MET-MATT



LED LIGHT ENGINE DAISY 16 LEDs 156mm x 20mm
FWHM / FWTM 76.0° / 87.0°
Efficiency 86 %
Peak intensity 0.6 cd/lm
LEDs/each optic 4
Light colour White
Required components:
C17422_DAISY-4X1-SHD2-MATT



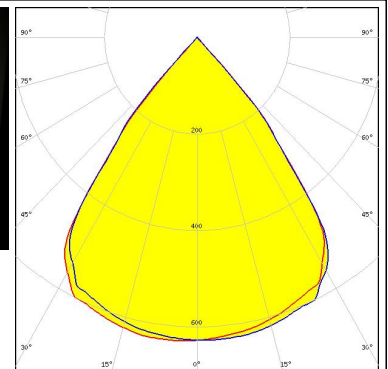
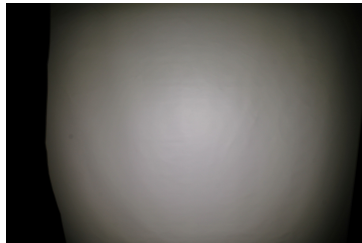
LED LIGHT ENGINE DAISY 16 LEDs 156mm x 20mm
FWHM / FWTM 76.0° / 87.5°
Efficiency 95 %
Peak intensity 0.7 cd/lm
LEDs/each optic 4
Light colour White
Required components:
C17225_DAISY-7X1-SHD-WHT-MATT



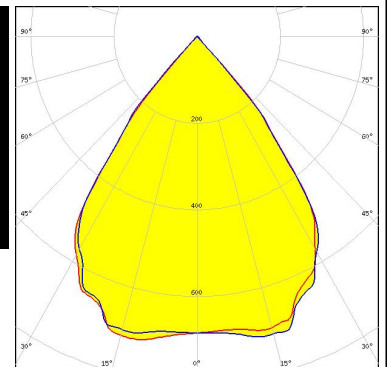
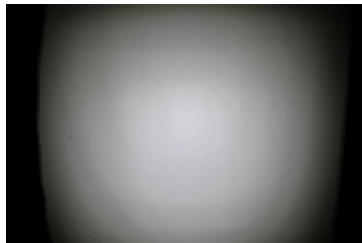
OPTICAL RESULTS (MEASURED):



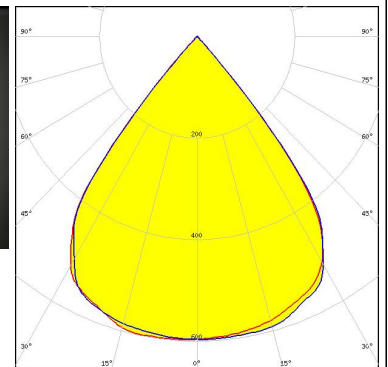
LED LIGHT ENGINE DAISY 16 LEDs 156mm x 20mm
 FWHM / FWTM 76.0° / 87.0°
 Efficiency 87 %
 Peak intensity 0.6 cd/lm
 LEDs/each optic 4
 Light colour White
 Required components:
 C16590_DAISY-4X1-SHD



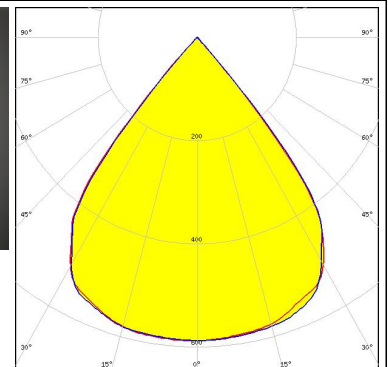
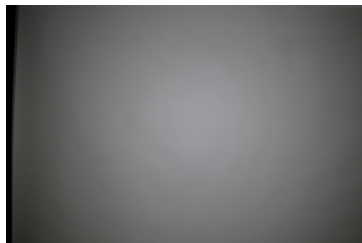
LED LIGHT ENGINE DAISY 16 LEDs 156mm x 20mm
 FWHM / FWTM 74.0° / 87.0°
 Efficiency 96 %
 Peak intensity 0.7 cd/lm
 LEDs/each optic 4
 Light colour White
 Required components:
 C17528_DAISY-4X1-SHD-MET



LED J Series 2835
 FWHM / FWTM 77.0° / 86.0°
 Efficiency 86 %
 Peak intensity 0.6 cd/lm
 LEDs/each optic 2
 Light colour White
 Required components:
 C16590_DAISY-4X1-SHD



LED LUXEON 2835 Line
 FWHM / FWTM 78.0° / 86.0°
 Efficiency 87 %
 Peak intensity 0.6 cd/lm
 LEDs/each optic 2
 Light colour White
 Required components:
 C16590_DAISY-4X1-SHD

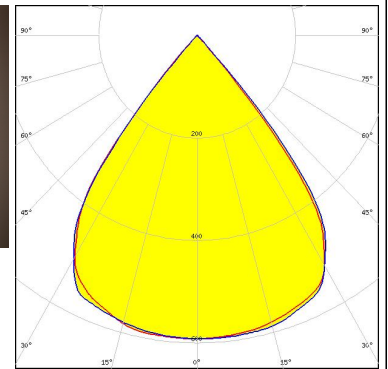


OPTICAL RESULTS (MEASURED):

MST

Your solutions

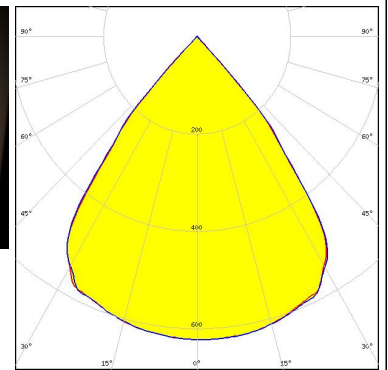
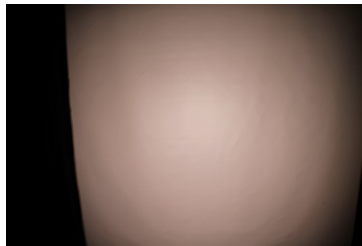
LED LinLED 156x28mm 2x200lm 827-865 2x2C 12V Opt G1
FWHM / FWTM 77.0° / 85.0°
Efficiency 85 %
Peak intensity 0.6 cd/lm
LEDs/each optic 2
Light colour Tunable White
Required components:
C16590_DAISSY-4X1-SHD



MST

Your solutions

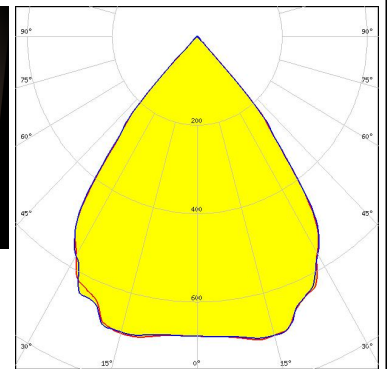
LED LinLED 156x28mm 2x400lm 827-865 2x2C 12V Opt G1
FWHM / FWTM 76.0 + 76.5° / 87.5°
Efficiency 87 %
Peak intensity 0.6 cd/lm
LEDs/each optic 4
Light colour Tunable White
Required components:
C16590_DAISSY-4X1-SHD



MST

Your solutions

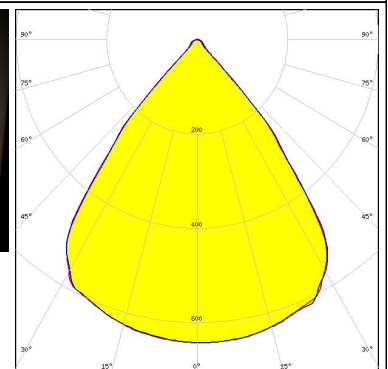
LED LinLED 156x28mm 2x400lm 827-865 2x2C 12V Opt G1
FWHM / FWTM 74.5 + 75.5° / 87.5°
Efficiency 95 %
Peak intensity 0.7 cd/lm
LEDs/each optic 4
Light colour Tunable White
Required components:
C17528_DAISSY-4X1-SHD-MET



MST

Your solutions

LED LinLED 156x28mm 2x400lm 827-865 2x2C 12V Opt G1
FWHM / FWTM 76.5 + 77.0° / 88.5°
Efficiency 95 %
Peak intensity 0.6 cd/lm
LEDs/each optic 4
Light colour Tunable White
Required components:
C16784_DAISSY-4X1-SHD-WHT

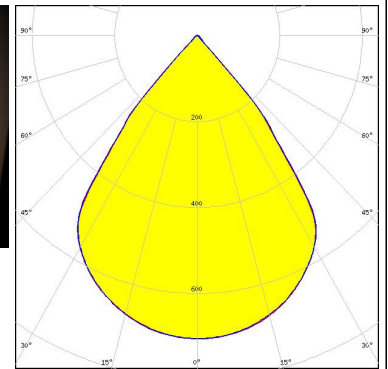


OPTICAL RESULTS (MEASURED):

MST

Your solutions

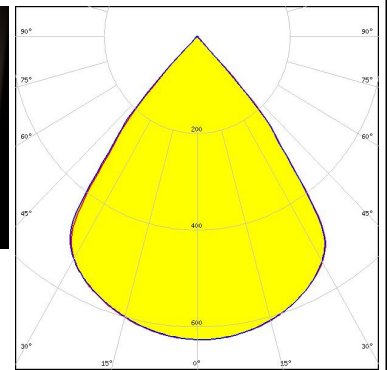
LED LinLED 156x28mm 2x400lm 827-865 2x2C 12V Opt G1
FWHM / FWTM 75.5° / 88.0 + 87.5°
Efficiency 94 %
Peak intensity 0.7 cd/lm
LEDs/each optic 4
Light colour Tunable White
Required components:
C17535_DAISSY-4X1-SHD2-MET-MATT



MST

Your solutions

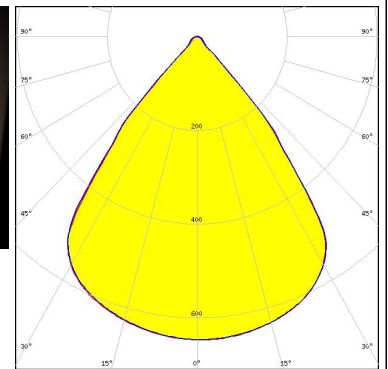
LED LinLED 156x28mm 2x400lm 827-865 2x2C 12V Opt G1
FWHM / FWTM 76.0 + 76.5° / 87.5°
Efficiency 86 %
Peak intensity 0.6 cd/lm
LEDs/each optic 4
Light colour Tunable White
Required components:
C17422_DAISSY-4X1-SHD2-MATT



MST

Your solutions

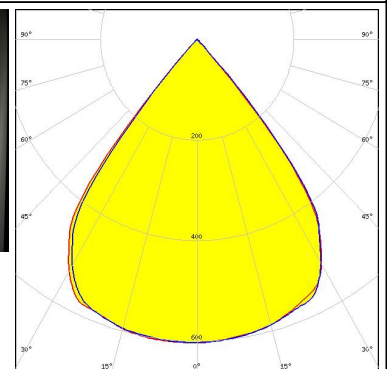
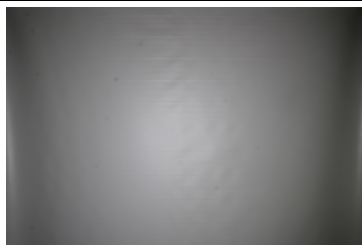
LED LinLED 156x28mm 2x400lm 827-865 2x2C 12V Opt G1
FWHM / FWTM 76.5 + 77.0° / 88.5°
Efficiency 95 %
Peak intensity 0.6 cd/lm
LEDs/each optic 4
Light colour Tunable White
Required components:
C17423_DAISSY-4X1-SHD2-WHT-MATT



MST

Your solutions

LED LinLED 156x28mm 400lm 8x0 2C 12V Opt G1
FWHM / FWTM 77.0° / 86.0°
Efficiency 87 %
Peak intensity 0.6 cd/lm
LEDs/each optic 2
Light colour White
Required components:
C16590_DAISSY-4X1-SHD

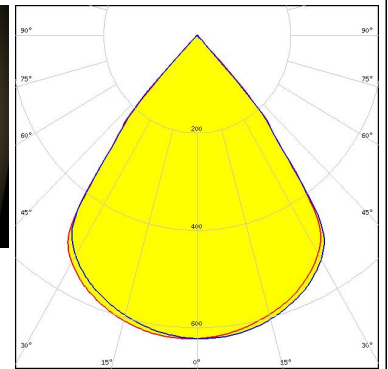


OPTICAL RESULTS (MEASURED):

MST

Your solutions

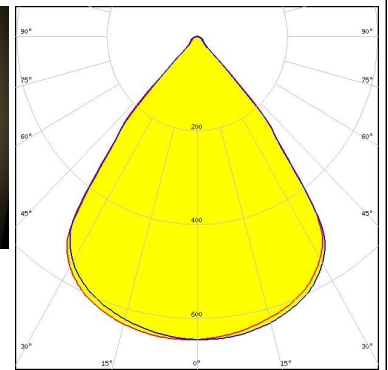
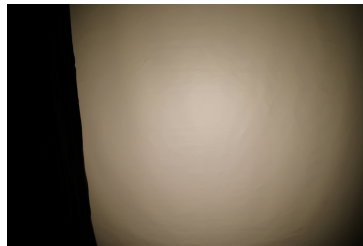
LED LinLED 156x28mm 800lm 8x0 2C 12V Opt G1
FWHM / FWTM 75.5 + 76.0° / 87.5°
Efficiency 85 %
Peak intensity 0.6 cd/lm
LEDs/each optic 4
Light colour White
Required components:
C17422_DAISSY-4X1-SHD2-MATT



MST

Your solutions

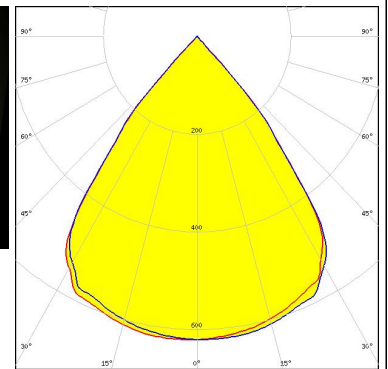
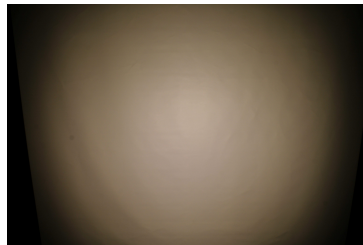
LED LinLED 156x28mm 800lm 8x0 2C 12V Opt G1
FWHM / FWTM 76.0 + 76.5° / 88.0°
Efficiency 94 %
Peak intensity 0.6 cd/lm
LEDs/each optic 4
Light colour White
Required components:
C17423_DAISSY-4X1-SHD2-WHT-MATT



MST

Your solutions

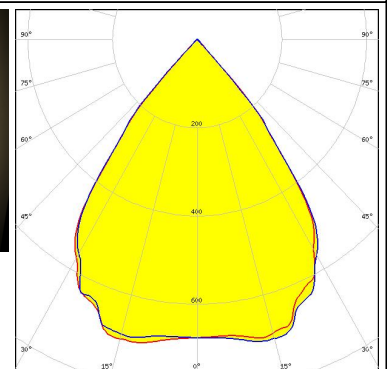
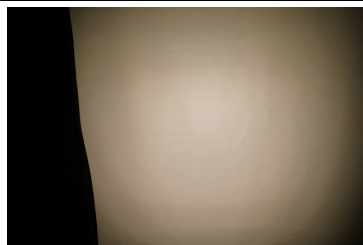
LED LinLED 156x28mm 800lm 8x0 2C 12V Opt G1
FWHM / FWTM 76.0 + 75.5° / 87.5 + 87.0°
Efficiency 86 %
Peak intensity 0.6 cd/lm
LEDs/each optic 4
Light colour White
Required components:
C16590_DAISSY-4X1-SHD



MST

Your solutions

LED LinLED 156x28mm 800lm 8x0 2C 12V Opt G1
FWHM / FWTM 74.5° / 87.5 + 87.0°
Efficiency 95 %
Peak intensity 0.7 cd/lm
LEDs/each optic 4
Light colour White
Required components:
C17528_DAISSY-4X1-SHD-MET

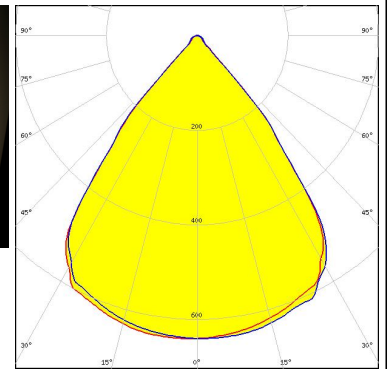


OPTICAL RESULTS (MEASURED):

MST

Your solutions

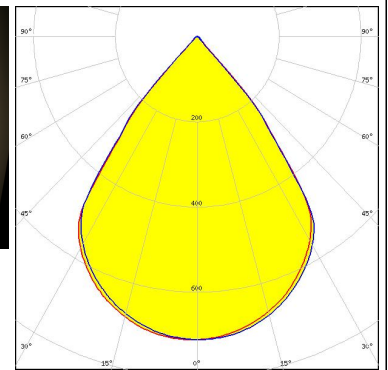
LED LinLED 156x28mm 800lm 8x0 2C 12V Opt G1
FWHM / FWTM 76.5° / 88.5 + 88.0°
Efficiency 94 %
Peak intensity 0.6 cd/lm
LEDs/each optic 4
Light colour White
Required components:
C16784_DAISY-4X1-SHD-WHT



MST

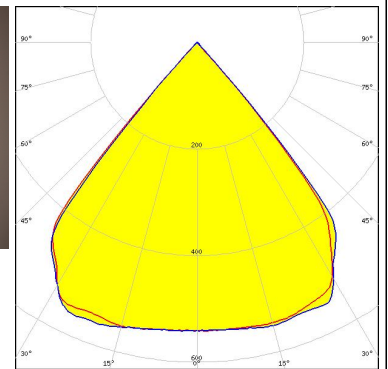
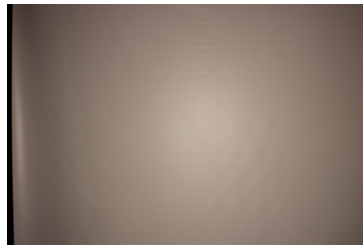
Your solutions

LED LinLED 156x28mm 800lm 8x0 2C 12V Opt G1
FWHM / FWTM 74.5° / 87.5°
Efficiency 94 %
Peak intensity 0.7 cd/lm
LEDs/each optic 4
Light colour White
Required components:
C17535_DAISY-4X1-SHD2-MET-MATT



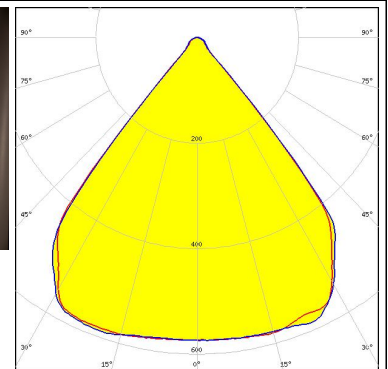
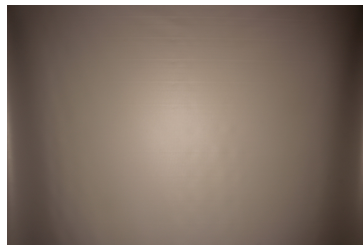
NICHIA

LED NF2W757G-MT (Tunable White)
FWHM / FWTM 79.0° / 85.0°
Efficiency 86 %
Peak intensity 0.6 cd/lm
LEDs/each optic 1
Light colour Tunable White
Required components:
C16590_DAISY-4X1-SHD



NICHIA

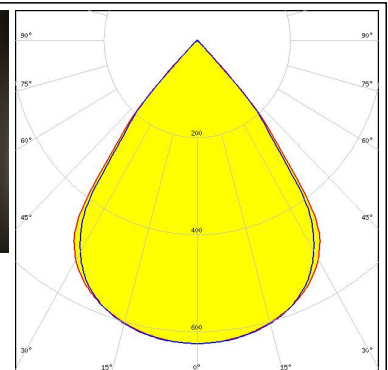
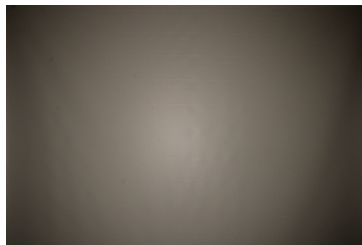
LED NF2W757G-MT (Tunable White)
FWHM / FWTM 79.0° / 86.0°
Efficiency 96 %
Peak intensity 0.6 cd/lm
LEDs/each optic 1
Light colour Tunable White
Required components:
C16784_DAISY-4X1-SHD-WHT



OPTICAL RESULTS (MEASURED):

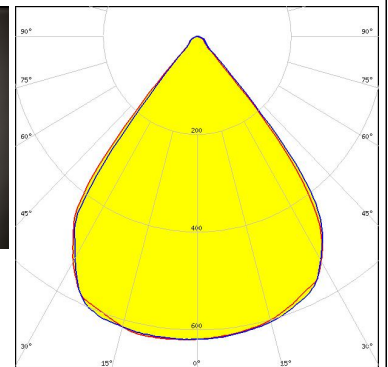
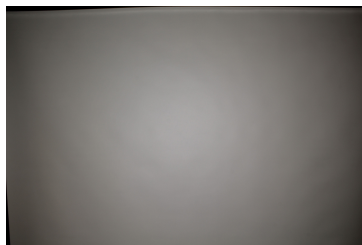
OSRAM

LED PL-LIN-1000 140x24mm
FWHM / FWTM 75.0° / 89.0°
Efficiency 83 %
Peak intensity 0.6 cd/lm
LEDs/each optic 4
Light colour White
Required components:
C17422_DAISSY-4X1-SHD2-MATT



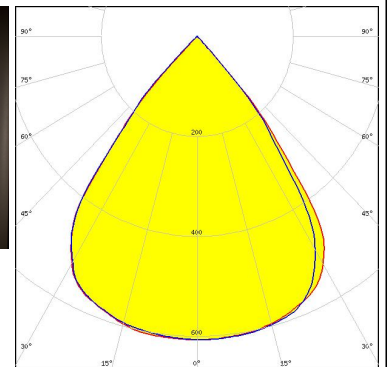
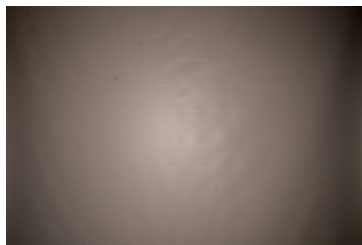
SAMSUNG

LED LM28xB Series
FWHM / FWTM 77.0° / 87.0°
Efficiency 94 %
Peak intensity 0.6 cd/lm
LEDs/each optic 2
Light colour White
Required components:
C16784_DAISSY-4X1-SHD-WHT



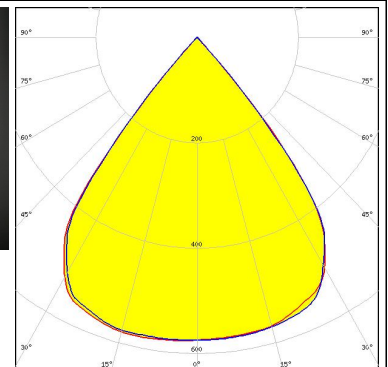
SAMSUNG

LED LM28xB Series
FWHM / FWTM 75.0° / 88.0°
Efficiency 84 %
Peak intensity 0.6 cd/lm
LEDs/each optic 4
Light colour White
Required components:
C16590_DAISSY-4X1-SHD



SAMSUNG

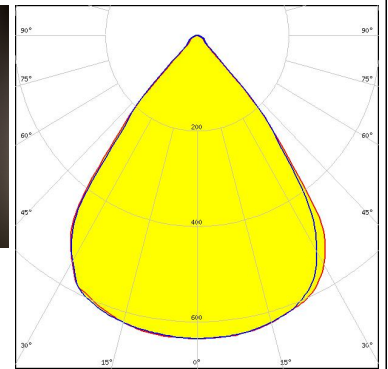
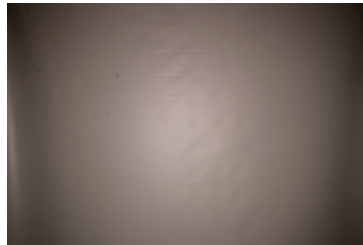
LED LM28xB Series
FWHM / FWTM 78.0° / 86.0°
Efficiency 84 %
Peak intensity 0.6 cd/lm
LEDs/each optic 2
Light colour White
Required components:
C16590_DAISSY-4X1-SHD



OPTICAL RESULTS (MEASURED):

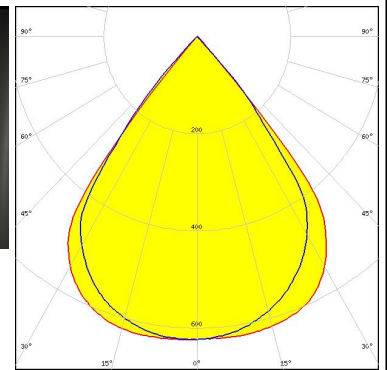
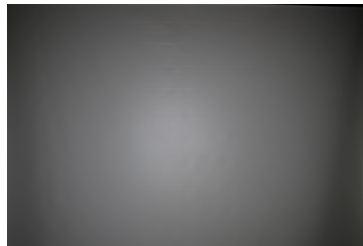
SAMSUNG


LED LM28xB Series
FWHM / FWTM 76.0° / 89.0°
Efficiency 94 %
Peak intensity 0.6 cd/lm
LEDs/each optic 4
Light colour White
Required components:
C16784_DAISY-4X1-SHD-WHT

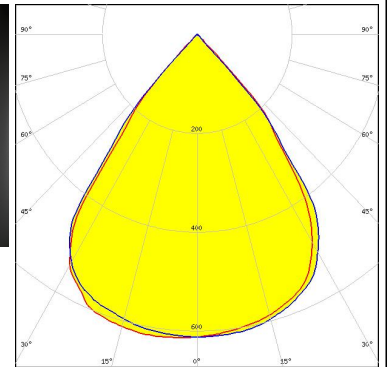
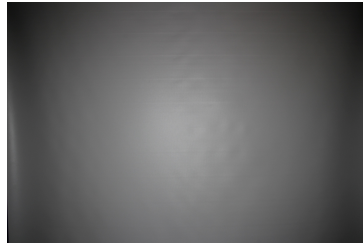



SAMSUNG

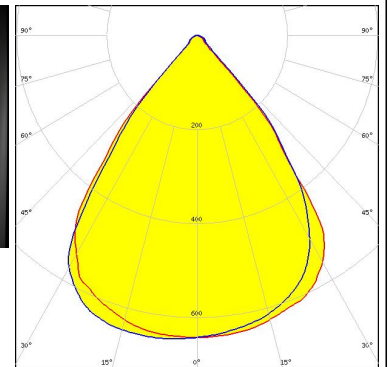
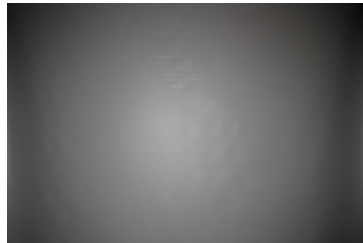
LED LM28xB Series
FWHM / FWTM 76.0° / 85.0°
Efficiency 86 %
Peak intensity 0.6 cd/lm
LEDs/each optic 1
Light colour White
Required components:
C17422_DAISY-4X1-SHD2-MATT



 SEOUL SEMICONDUCTOR
LED SEOUL DC 3030
FWHM / FWTM 75.0° / 89.0°
Efficiency 83 %
Peak intensity 0.6 cd/lm
LEDs/each optic 4
Light colour Tunable White
Required components:
C16590_DAISY-4X1-SHD



 SEOUL SEMICONDUCTOR
LED SEOUL DC 3030
FWHM / FWTM 75.0° / 89.0°
Efficiency 92 %
Peak intensity 0.7 cd/lm
LEDs/each optic 4
Light colour Tunable White
Required components:
C16784_DAISY-4X1-SHD-WHT



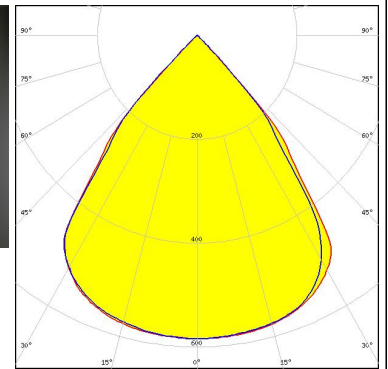
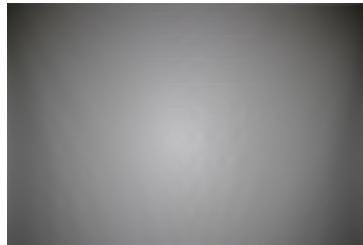
OPTICAL RESULTS (MEASURED):

<p>SEOUL SEMICONDUCTOR</p> <p>LED: SEOUL DC 3528</p> <p>FWHM / FWTM: 77.0° / 86.0°</p> <p>Efficiency: 87 %</p> <p>Peak intensity: 0.6 cd/lm</p> <p>LEDs/each optic: 2</p> <p>Light colour: White</p> <p>Required components: C16590_DAISY-4X1-SHD</p>		
<p>SEOUL SEMICONDUCTOR</p> <p>LED: SEOUL DC 3528</p> <p>FWHM / FWTM: 78.0° / 86.0°</p> <p>Efficiency: 87 %</p> <p>Peak intensity: 0.6 cd/lm</p> <p>LEDs/each optic: 2</p> <p>Light colour: White</p> <p>Required components: C16590_DAISY-4X1-SHD</p>		
<p>TEPCOMP group</p> <p>LED: PassivePAQ-L-0.5F35-SSA3-1.6K-840-3-DC</p> <p>FWHM / FWTM: 80.0° / 91.0°</p> <p>Efficiency: 94 %</p> <p>Peak intensity: 0.6 cd/lm</p> <p>LEDs/each optic: 4</p> <p>Light colour: White</p> <p>Required components: C16784_DAISY-4X1-SHD-WHT</p>		
<p>TEPCOMP group</p> <p>LED: PassivePAQ-L-0.5F35-SSA3-1.6K-840-3-DC</p> <p>FWHM / FWTM: 79.0° / 91.0°</p> <p>Efficiency: 94 %</p> <p>Peak intensity: 0.6 cd/lm</p> <p>LEDs/each optic: 4</p> <p>Light colour: White</p> <p>Required components: C17423_DAISY-4X1-SHD2-WHT-MATT</p>		

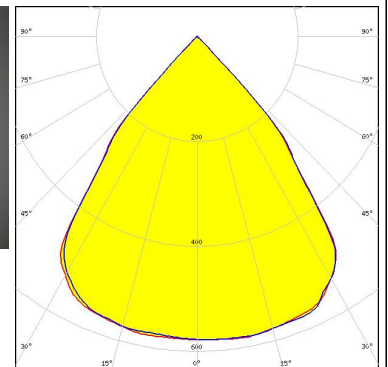
OPTICAL RESULTS (MEASURED):



LED PassivePAQ-L-0.5F35-SSA3-1.6K-840-3-DC
 FWHM / FWTM 80.0 + 77.0° / 91.0°
 Efficiency 83 %
 Peak intensity 0.6 cd/lm
 LEDs/each optic 4
 Light colour White
 Required components:
 C17422_DAISSY-4X1-SHD2-MATT

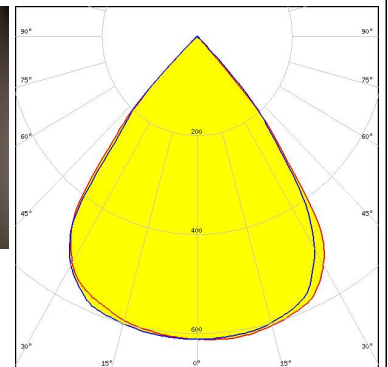
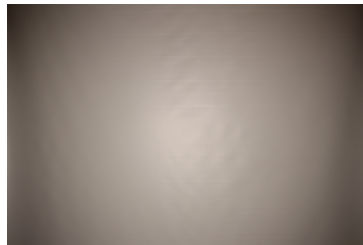


LED PassivePAQ-L-0.5F35-SSA3-1.6K-840-3-DC
 FWHM / FWTM 79.0° / 91.0°
 Efficiency 85 %
 Peak intensity 0.6 cd/lm
 LEDs/each optic 4
 Light colour White
 Required components:
 C16590_DAISSY-4X1-SHD



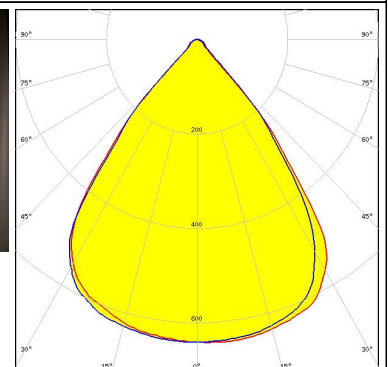
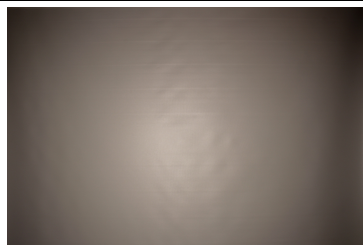
TRIDONIC

LED LLE 24x140mm 400lm 827-865 LVD ADV1
 FWHM / FWTM 76.0° / 89.0°
 Efficiency 85 %
 Peak intensity 0.6 cd/lm
 LEDs/each optic 4
 Light colour White
 Required components:
 C16590_DAISSY-4X1-SHD



TRIDONIC

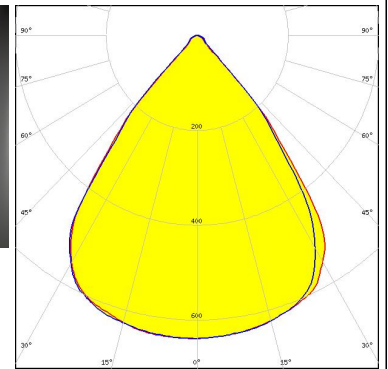
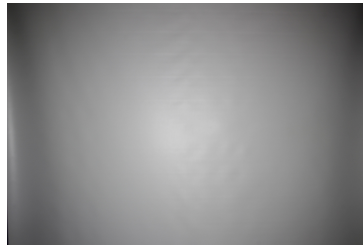
LED LLE 24x140mm 400lm 827-865 LVD ADV1
 FWHM / FWTM 76.0° / 90.0°
 Efficiency 94 %
 Peak intensity 0.6 cd/lm
 LEDs/each optic 4
 Light colour White
 Required components:
 C16784_DAISSY-4X1-SHD-WHT



OPTICAL RESULTS (MEASURED):

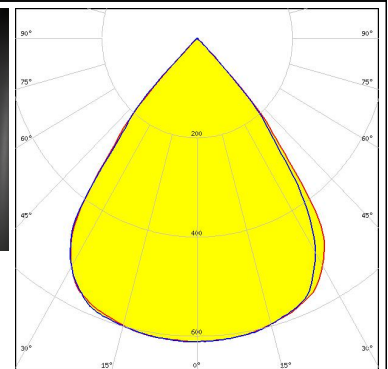
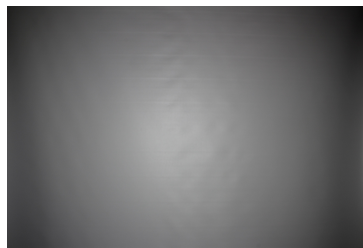
TRIDONIC

LED LLE 24x140mm 400lm 8x0 LVD ADV1
FWHM / FWTM 77.0° / 90.0°
Efficiency 94 %
Peak intensity 0.6 cd/lm
LEDs/each optic 4
Light colour White
Required components:
C16784_DAISY-4X1-SHD-WHT



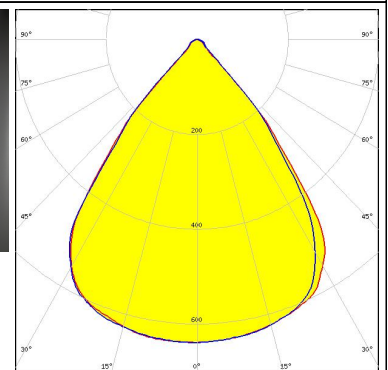
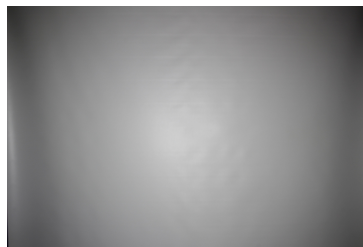
TRIDONIC

LED LLE 24x140mm 400lm 8x0 LVD ADV1
FWHM / FWTM 76.0° / 89.0°
Efficiency 85 %
Peak intensity 0.6 cd/lm
LEDs/each optic 4
Light colour White
Required components:
C16590_DAISY-4X1-SHD



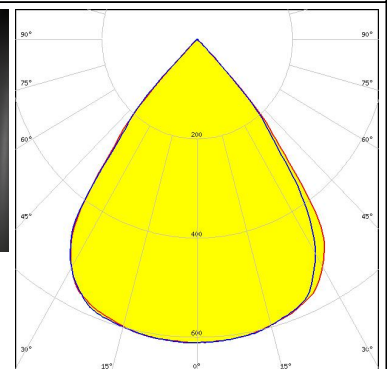
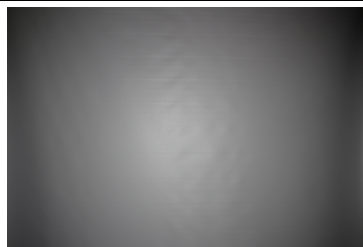
TRIDONIC

LED LLE 24x280mm 750lm 8x0 LVD ADV1
FWHM / FWTM 76.0° / 90.0°
Efficiency 94 %
Peak intensity 0.6 cd/lm
LEDs/each optic 4
Light colour White
Required components:
C16784_DAISY-4X1-SHD-WHT



TRIDONIC

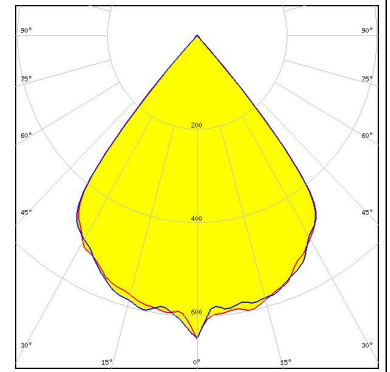
LED LLE 24x280mm 750lm 8x0 LVD ADV1
FWHM / FWTM 76.0° / 89.0°
Efficiency 85 %
Peak intensity 0.6 cd/lm
LEDs/each optic 4
Light colour White
Required components:
C16590_DAISY-4X1-SHD



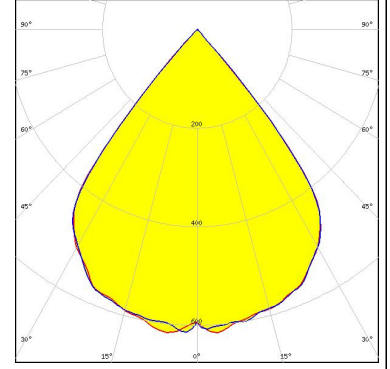
OPTICAL RESULTS (SIMULATED):



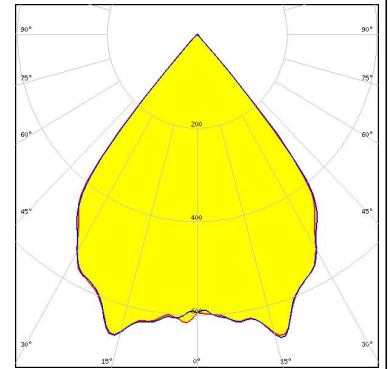
LED J Series 2835
FWHM / FWTM 78.0° / 85.0°
Efficiency 83 %
Peak intensity 0.6 cd/lm
LEDs/each optic 1
Light colour White
Required components:
C17422_DAISSY-4X1-SHD2-MATT



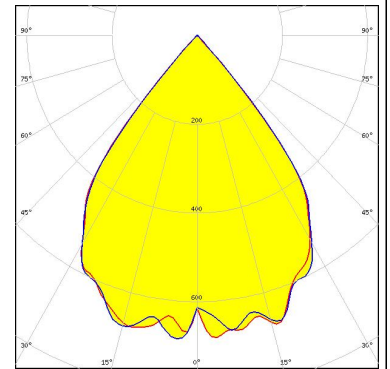
LED J Series 5050 Round LES
FWHM / FWTM 78.0° / 86.0°
Efficiency 84 %
Peak intensity 0.6 cd/lm
LEDs/each optic 1
Light colour White
Required components:
C17422_DAISSY-4X1-SHD2-MATT



LED LUXEON 3535L
FWHM / FWTM 76.0° / 85.0°
Efficiency 90 %
Peak intensity 0.7 cd/lm
LEDs/each optic 1
Light colour White
Required components:
C16590_DAISSY-4X1-SHD



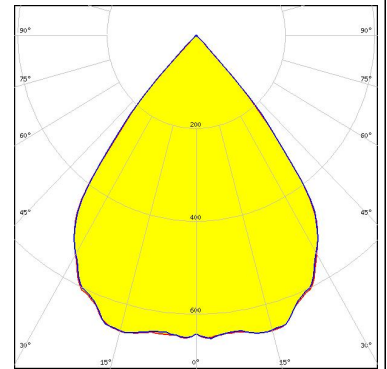
LED LUXEON 5050 Round LES
FWHM / FWTM 76.0° / 88.0°
Efficiency 90 %
Peak intensity 0.7 cd/lm
LEDs/each optic 1
Light colour White
Required components:
C16590_DAISSY-4X1-SHD



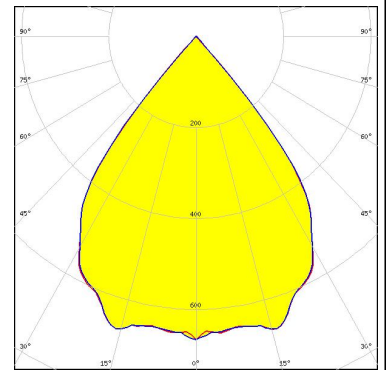
OPTICAL RESULTS (SIMULATED):



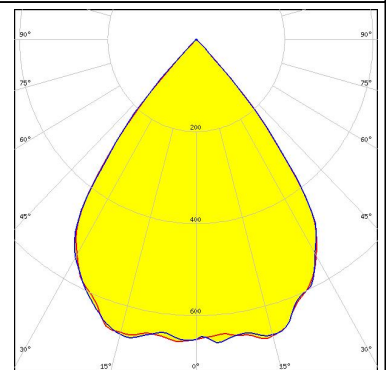
LED NF2W757G-MT (Tunable White)
FWHM / FWTM 76.0° / 88.0°
Efficiency 90 %
Peak intensity 0.7 cd/lm
LEDs/each optic 4
Light colour Tunable White
Required components:
C16590_DAISY-4X1-SHD



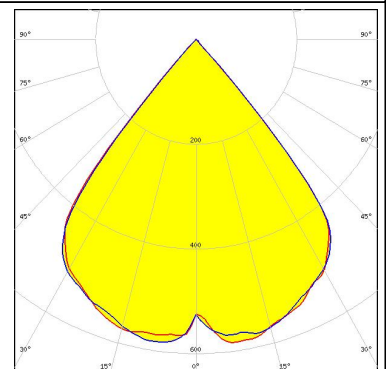
LED NF2W757G-MT (Tunable White)
FWHM / FWTM 76.0 + 78.0° / 86.0°
Efficiency 90 %
Peak intensity 0.7 cd/lm
LEDs/each optic 2
Light colour Tunable White
Required components:
C16590_DAISY-4X1-SHD



LED Duris E 2835
FWHM / FWTM 76.0° / 88.0°
Efficiency 89 %
Peak intensity 0.7 cd/lm
LEDs/each optic 4
Light colour White
Required components:
C16585_DAISY-28X1-SHD



LED Duris E 2835
FWHM / FWTM 80.0° / 86.0°
Efficiency 83 %
Peak intensity 0.6 cd/lm
LEDs/each optic 1
Light colour White
Required components:
C16590_DAISY-4X1-SHD

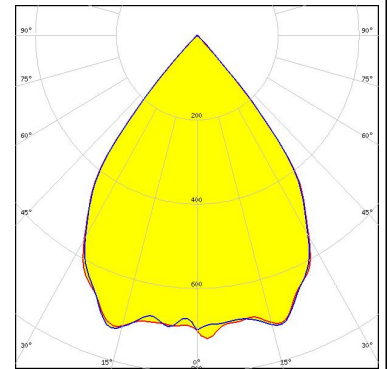


OPTICAL RESULTS (SIMULATED):

OSRAM

Opto Semiconductors

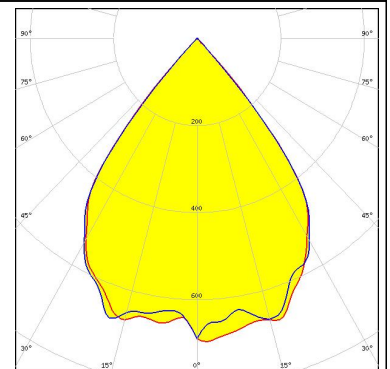
LED Duris E 2835
FWHM / FWTM 76.0° / 88.0°
Efficiency 95 %
Peak intensity 0.7 cd/lm
LEDs/each optic 2
Light colour White
Required components:
C16590_DAISY-4X1-SHD



OSRAM

Opto Semiconductors

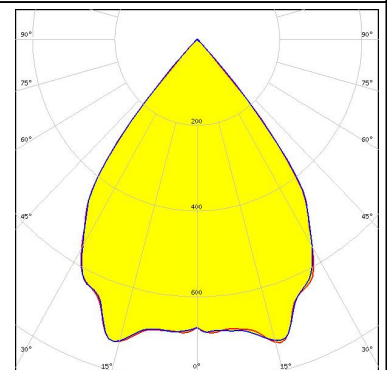
LED Duris S8
FWHM / FWTM 76.0° / 88.0°
Efficiency 90 %
Peak intensity 0.7 cd/lm
LEDs/each optic 1
Light colour White
Required components:
C16590_DAISY-4X1-SHD



OSRAM

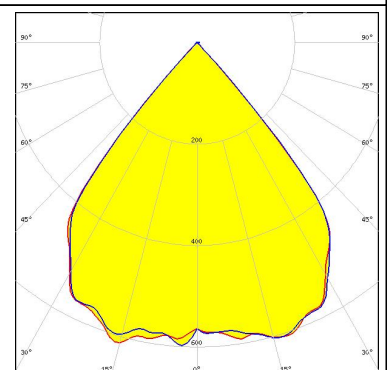
Opto Semiconductors

LED Duris S8
FWHM / FWTM 76.0° / 86.0°
Efficiency 95 %
Peak intensity 0.7 cd/lm
LEDs/each optic 1
Light colour White
Required components:
C16784_DAISY-4X1-SHD-WHT



SAMSUNG

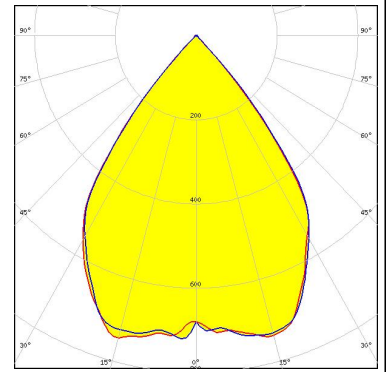
LED LH351B
FWHM / FWTM 79.0° / 88.0°
Efficiency 90 %
Peak intensity 0.6 cd/lm
LEDs/each optic 1
Light colour White
Required components:
C16590_DAISY-4X1-SHD



OPTICAL RESULTS (SIMULATED):

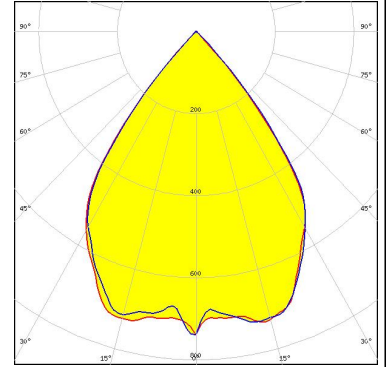
SAMSUNG

LED LM28xB Series
FWHM / FWTM 75.0° / 88.0°
Efficiency 95 %
Peak intensity 0.8 cd/lm
LEDs/each optic 4
Light colour White
Required components:
C17423_DAISSY-4X1-SHD2-WHT-MATT



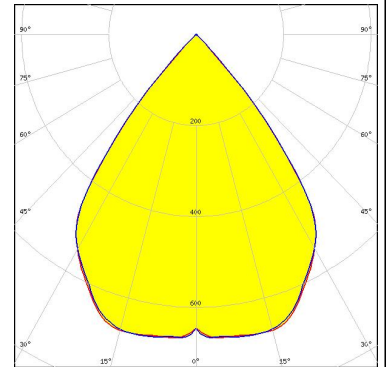
SAMSUNG

LED LM28xB Series
FWHM / FWTM 74.0° / 88.0°
Efficiency 93 %
Peak intensity 0.7 cd/lm
LEDs/each optic 4
Light colour White
Required components:
C18411_DAISSY-4X1-SHD2-MET-MATT



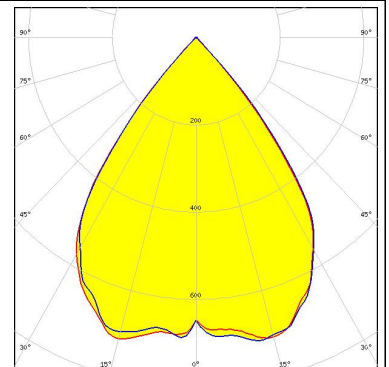
SAMSUNG

LED LM28xB Series
FWHM / FWTM 76.0° / 88.0°
Efficiency 90 %
Peak intensity 0.7 cd/lm
LEDs/each optic 4
Light colour White
Required components:
C17422_DAISSY-4X1-SHD2-MATT



SAMSUNG

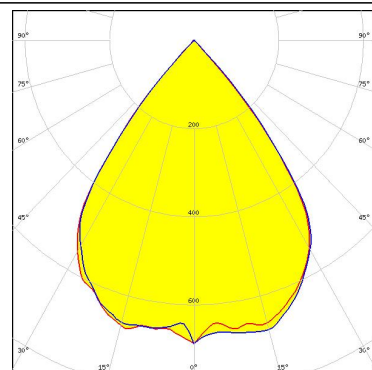
LED LM28xB Series
FWHM / FWTM 75.0° / 88.0°
Efficiency 93 %
Peak intensity 0.7 cd/lm
LEDs/each optic 4
Light colour White
Required components:
C18412_DAISSY-4X1-SHD2-MET



OPTICAL RESULTS (SIMULATED):

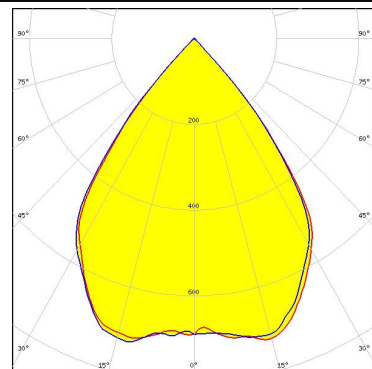
SAMSUNG

LED LM28xB Series
FWHM / FWTM 76.0° / 88.0°
Efficiency 89 %
Peak intensity 0.7 cd/lm
LEDs/each optic 4
Light colour White
Required components:
C19075_DAISSY-4X1-SHD2



TRIDONIC

LED LLE 24x140mm 400lm 8x0 LVD ADV1
FWHM / FWTM 75.0° / 88.0°
Efficiency 94 %
Peak intensity 0.7 cd/lm
LEDs/each optic 1
Light colour White
Required components:
C17423_DAISSY-4X1-SHD2-WHT-MATT



GENERAL INFORMATION:

NOTE: The typical beam angle will be changed by different color, chip size and chip position tolerance. The typical total beam angle is the full angle measured where the luminous intensity is half of the peak value.

MATERIALS:

As part of our continuous research and improvement processes, and to ensure the best possible quality and availability of our products, LEDiL reserves the right to change material grades without notice.

PRODUCT DATA USER AGREEMENT AND DISCLAIMER:

The measured data in the provided downloadable LEDiL Product Datasheets and Mechanical 2D-Drawings is rounded and provided as reference for planning. LEDiL Oy's optical specifications have been verified by conducting performance testing of the products in accordance with the company's quality system. The reported data are averaged results of multiple measurements with typical variation. LEDiL Oy reserves the right to without prior notification make changes and improvements to its products.

LEDiL Oy assumes neither warranty, nor guarantee nor any other liability of any kind for the contents and correctness of the provided data. The provided data has been generated with highest diligence but the provided data may in reality not represent the complete possible variation range of all intrinsic parameters. Therefore, in certain cases a deviation from the provided data could occur.

LEDiL Oy reserves the right to undertake technical changes of its products without further notification which could lead to changes in the provided data. LEDiL Oy assumes no liability of any kind for the possible deviation from any provided data or any other damage resulting from the usage of the provided data.

The user agrees to this disclaimer and user agreement with the download or usage of the provided files.

LEDiL Oy

Joensuunkatu 13
FI-24240 SALO
Finland

LEDiL Inc.

228 West Page Street
Suite D
Sycamore IL 60178
USA

Ledil Optics Technology (Shenzhen) Co., Ltd.

405 , Block B
Casic Motor Building
Shenzhen 518057
P.R.CHINA

Local sales and technical support

[www.ledil.com/
where_to_buy](http://www.ledil.com/where_to_buy)

Shipping locations

Salo, Finland
Hong Kong, China

Distribution Partners

[www.ledil.com/
where_to_buy](http://www.ledil.com/where_to_buy)