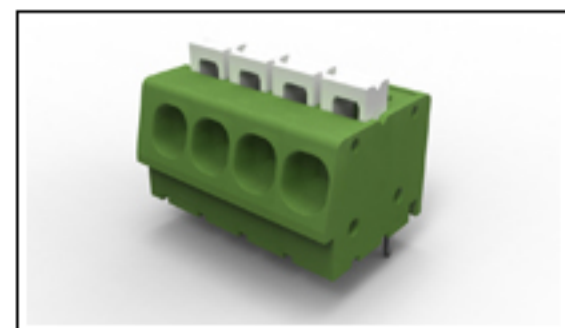




1986712-3 Product Details

[Share](#) | [Print](#) | [Email](#)


1986712-3

TE Internal Number: 1986712-3

[Active](#)

Terminal Block Connectors

[Always EU RoHS/ELV Compliant \(Statement of Compliance\)](#)

Product Highlights:

- Connector
- Type of Connector = Spring (Straight)
- Not Shrouded
- Housing Color = Green
- Side Stackable

[View all Features](#)

[Add to My Part List](#) [Request Sample](#) [Find Similar Products](#) [Buy Product](#)

Quick Links

- ▶ [Check Pricing & Availability](#)
- ▶ [Search for Tooling](#)
- ▶ [Product Feature Selector](#)
- ▶ [Contact Us About This Product](#)

Documentation & Additional Information	
<p>Product Drawings:</p> <ul style="list-style-type: none"> • SPRING TYPE, SIDE WIRE ENTRY TERMINAL SIDE STACKABLE... (PDF, English) <p>Catalog Pages/Data Sheets:</p> <ul style="list-style-type: none"> • None Available <p>Product Specifications:</p> <ul style="list-style-type: none"> • None Available <p>Application Specifications:</p> <ul style="list-style-type: none"> • None Available <p>Instruction Sheets:</p> <ul style="list-style-type: none"> • None Available <p>CAD Files:</p> <ul style="list-style-type: none"> • None Available 	<p>Additional Information:</p> <ul style="list-style-type: none"> • Product Line Information <p>Related Products:</p> <ul style="list-style-type: none"> • Tooling

[List all Documents](#)

Product Features (Please use the Product Drawing for all design activity)	
<p>Product Type Features:</p> <ul style="list-style-type: none"> • Product Type = Connector • Type of Connector = Spring (Straight) • Shrouded = No • Mount Angle = Vertical • UL File Number = E60677 <p>Electrical Characteristics:</p> <ul style="list-style-type: none"> • Current Rating, Max. (A) = 16 • Voltage (VAC) = 300 • Lever Color = White <p>Body Features:</p> <ul style="list-style-type: none"> • Side Stackable = Yes • Number of Positions = 3 • Number of Rows = Single • Centerline (mm [in]) = 5.08 [0.200] • Wire Entry Diameter (Solid Wire) (mm²) = 0.05 - 3.00 • Wire Entry Diameter (Stranded Wire) (mm²) = 0.05 - 3.00 • Wire Entry Angle = Side • Interlock = Without • Wire Range (mm [AWG]) = 0.05-3.00 [30-12] • Pin Length (mm [in]) = 3.50 [0.138] 	<p>Contact Features:</p> <ul style="list-style-type: none"> • Threaded Flange = Without • Screw Flange = Without • Contact Plating, Mating Area, Material = Tin over Copper Alloy <p>Housing Features:</p> <ul style="list-style-type: none"> • Housing Color = Green • Housing Material = Polyamide <p>Industry Standards:</p> <ul style="list-style-type: none"> • RoHS/ELV Compliance = RoHS compliant, ELV compliant • Lead Free Solder Processes = Wave solder capable to 240°C, Wave solder capable to 260°C, Wave solder capable to 265°C • RoHS/ELV Compliance History = Always was RoHS compliant <p>Other:</p> <ul style="list-style-type: none"> • Brand = Tyco Electronics

Corporate Information

[Who We Are](#)
[Investors](#)
[News Room](#)
[Supplier Portal](#)
[Careers](#)

Quick Links

[Check Distributor Inventory](#)
[Cross Reference](#)
[Find Documents & Drawings](#)
[Product Compliance Support Center](#)
[Site Map](#)

Customer Support

[Email or Chat With Us](#)
[Find a Phone Number](#)
[Search Knowledge Base](#)
[Manage your Account](#)

Keep Me Informed

Receive TE News, Events & Technology Updates

