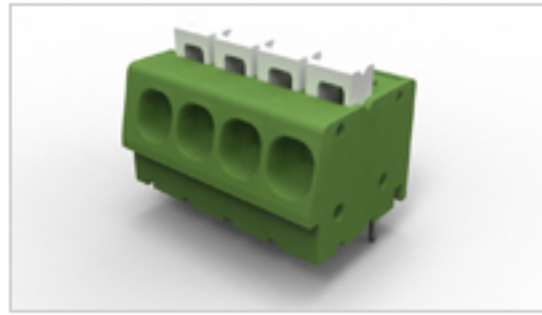


1986712-7 Product Details

[Share](#) | [Print](#) | [Email](#)


Active

[View 3D PDF](#)

Terminal Block Connectors

SCREWLESS, SW, 7P, 5.08 PCB

1986712-7

TE Internal Number: 1986712-7

Product Highlights [View All](#)

- Connector
- Type of Connector = Spring (Straight)
- Not Shrouded
- Housing Color = Green
- Side Stackable

- [Pricing & Availability](#)
- [Request Sample](#)
- [Add to My Part List](#)
- [Buy Product through Distributor](#)

Feedback

[Documents](#) | [Features](#) | [Compliance](#)

Please Note:
Use the Product Drawing for all design activity

Product Type Features	
Product Type	Connector
Type of Connector	Spring (Straight)
Mount Angle	Vertical

Electrical Characteristics	
Current Rating, Max. (A)	16
Voltage (VAC)	300

Dimensions	
Pin Length (mm [in])	3.50 [0.138]

Body Features	
Wire Entry Diameter (Solid Wire) (mm ²)	0.05 - 3.00
Wire Entry Diameter (Stranded Wire) (mm ²)	0.05 - 3.00
Wire Entry Angle	Side
Interlock	Without
Wire Range (mm [AWG])	0.05-3.00 ² [30-12]
Lever Color	White

Contact Features	
Contact Plating, Mating Area, Material	Tin over Copper Alloy

Housing Features	
Housing Color	Green
Centerline (mm [in])	5.08 [0.200]
Housing Material	Polyamide - GF

Configuration Features	
Shrouded	No
Side Stackable	Yes
Threaded Flange	Without
Screw Flange	Without
Number of Positions	7
Number of Rows	Single

Industry Standards	
RoHS/ELV Compliance	RoHS compliant, ELV compliant
Lead Free Solder Processes	Wave solder capable to 240°C, Wave solder capable to 260°C, Wave solder capable to 265°C
RoHS/ELV Compliance History	Always was RoHS compliant
UL File Number	E60677

Other	
Brand	TE Connectivity
Node Classification	Terminal Block Headers & Receptacles

Related Products

Not quite the product you're looking for?
[Find Similar Products](#)

[View Part in Product Feature Selector](#)

[Check for Tooling](#)

- Corporate Information**
- [About TE](#)
 - [Investors](#)
 - [News Room](#)
 - [Supplier Portal](#)
 - [Careers](#)
 - [Terms & Conditions](#)
 - [Privacy Policy](#)
 - [Global Accessibility Statement](#)

- Quick Links**
- [Distributor Inventory](#)
 - [Product Cross Reference](#)
 - [Documents & Drawings](#)
 - [Product Compliance Support Center](#)
 - [Site Map](#)

- Customer Support**
- [Email or Chat With Us](#)
 - [Find a Phone Number](#)
 - [Knowledge Base](#)
 - [Manage Your Account](#)

Keep Me Informed