

LS5 LENSES FOR SAMSUNG SUNNIX5 LEDs



- Specially designed for Samsung Sunnix5 series of LEDs.
- Special care taken to make a uniform white or warm white illumination. Lenses work well with other colors, too.
- Lens material optical grade PMMA. Allows use of high current and temperature conditions
- Best available optical efficiency, more than 90%, with an extremely good cutoff of light
- Fastening of holden to PCB with appropriate adhesive, e.c. epoxy or polyurethane based. NOTE: DO NOT USE SUPERGLUE.

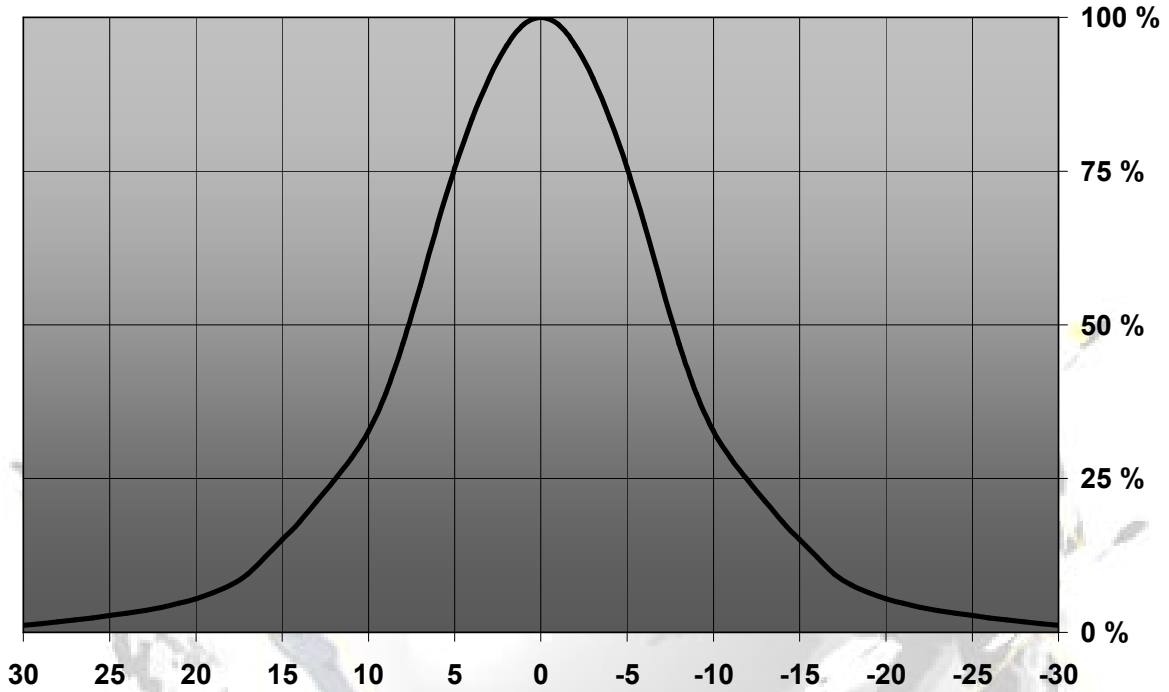
LENS TYPES

NAME	ORDERING CODE	FWHM Angle
LS5 REAL SPOT	FA11060_LS5-RS	±8°
LS5 DIFFUSER	FA11061_LS5-D	±10°
LS5 MEDIUM	FA11062_LS5-M	±14°
LS5 OVALE	FA11063_LS5-O-90	±9°x±20°
LS5 RECTANGULAR	FA11064_LS5-REC	±13°x±19°

© Ledil Oy – PRELIMINARY - Subject to change without prior notice

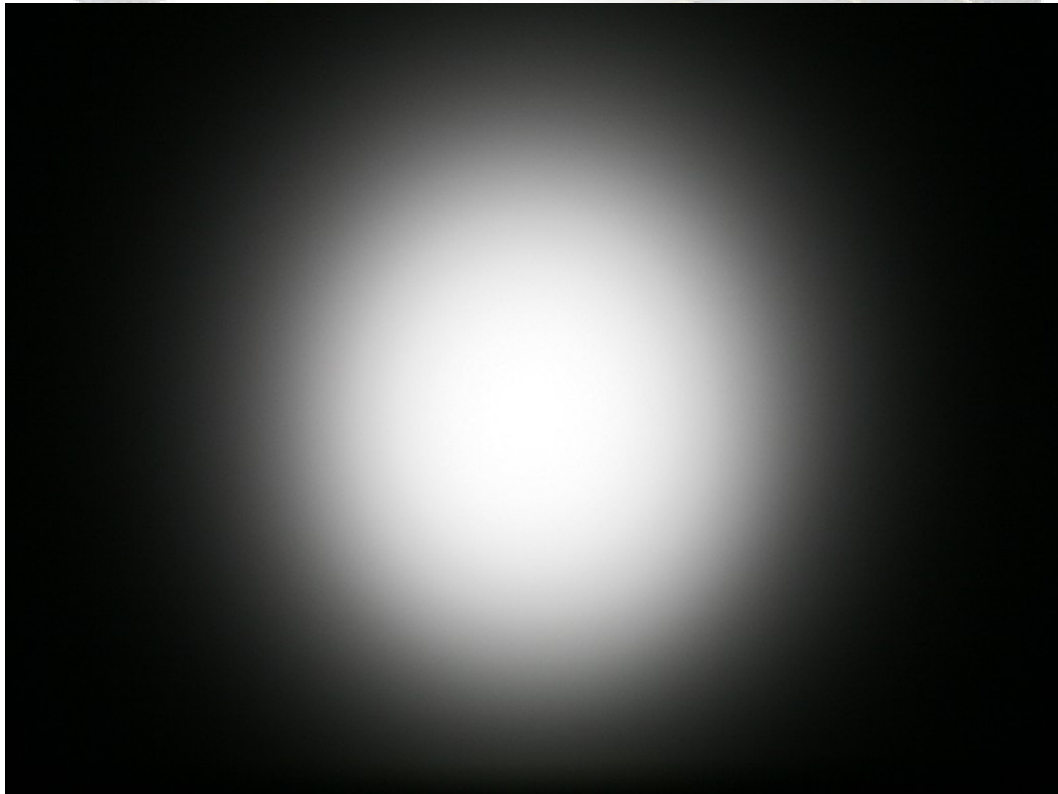
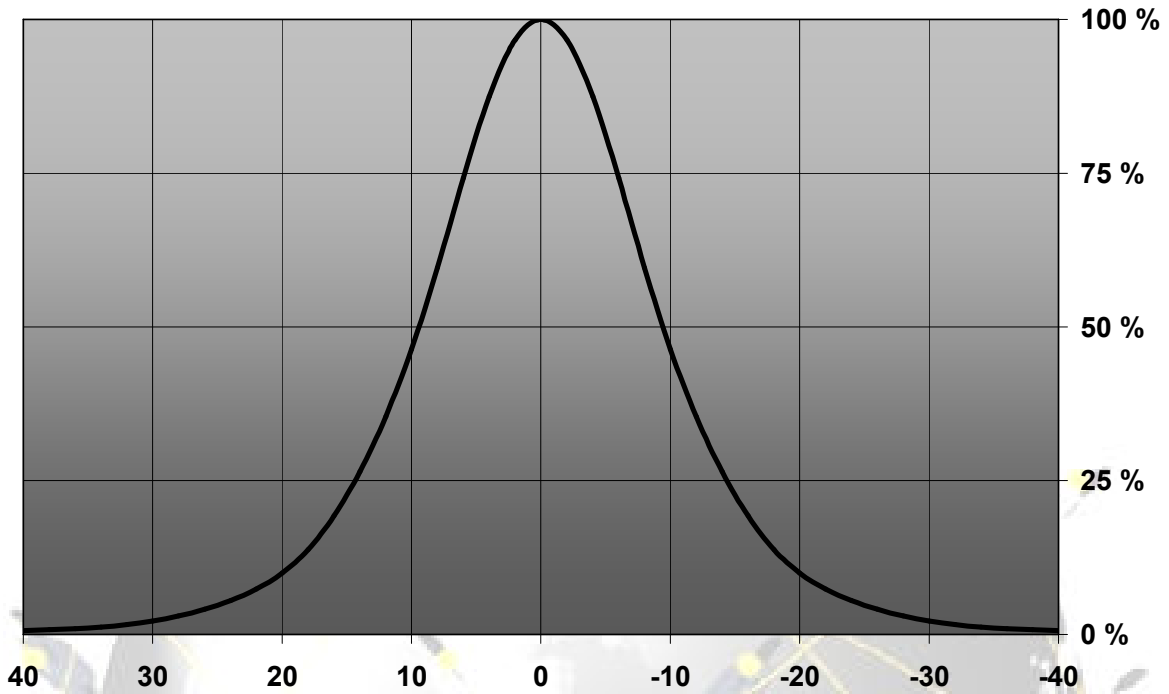
MEASUREMENT DATA

Relative Intensity of FA11060_LS5-RS



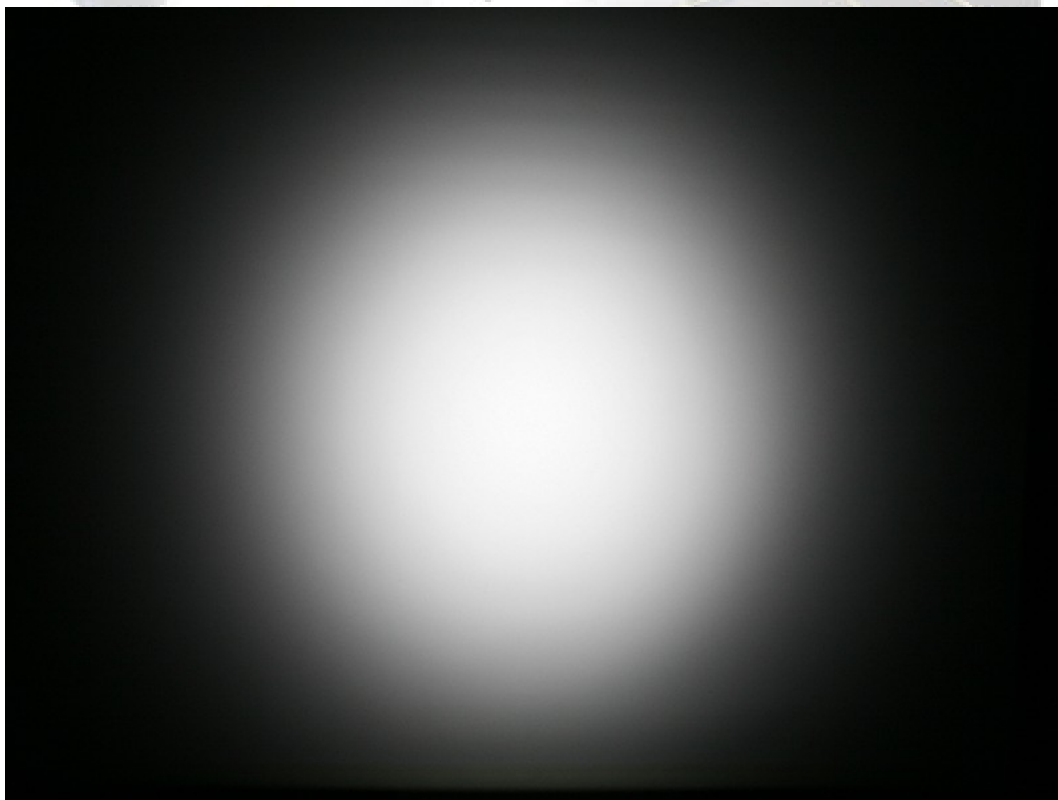
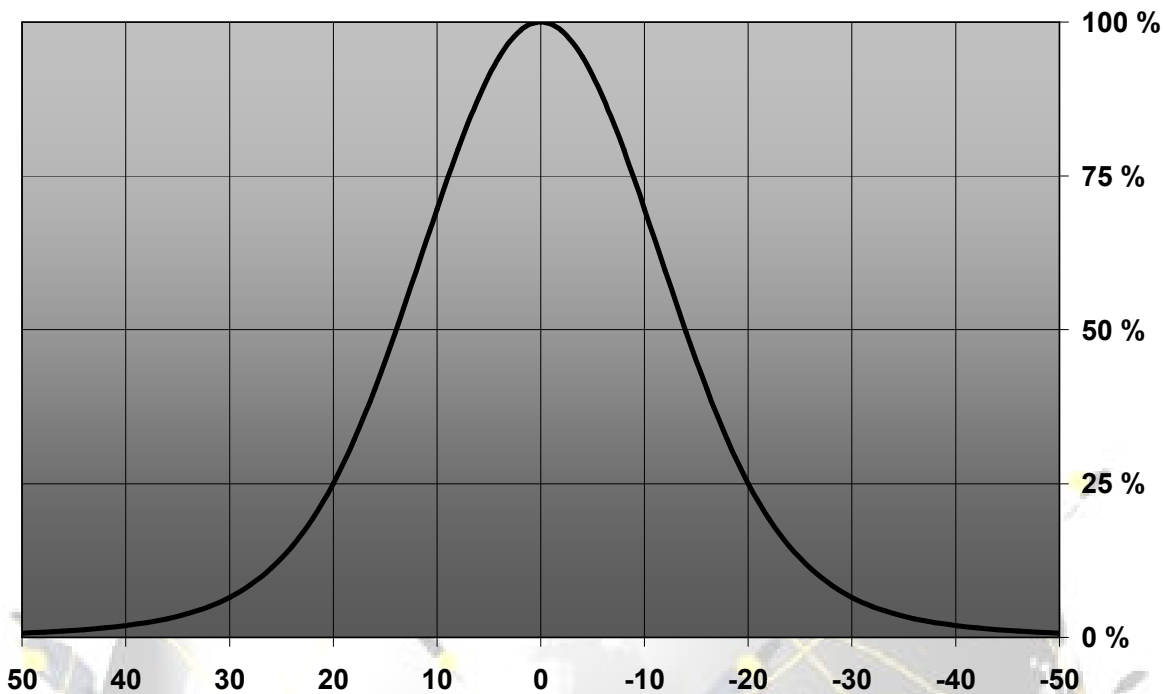
© Ledil Oy – PRELIMINARY - Subject to change without prior notice

Relative Intensity of FA11061_LS5-D



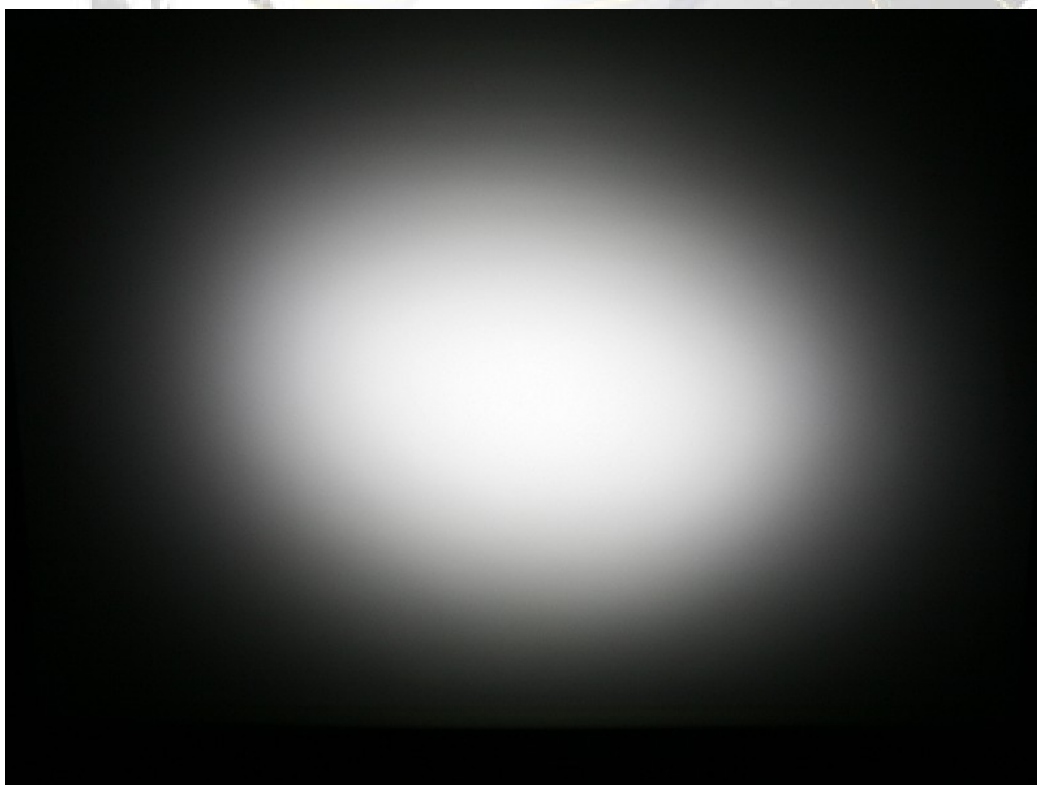
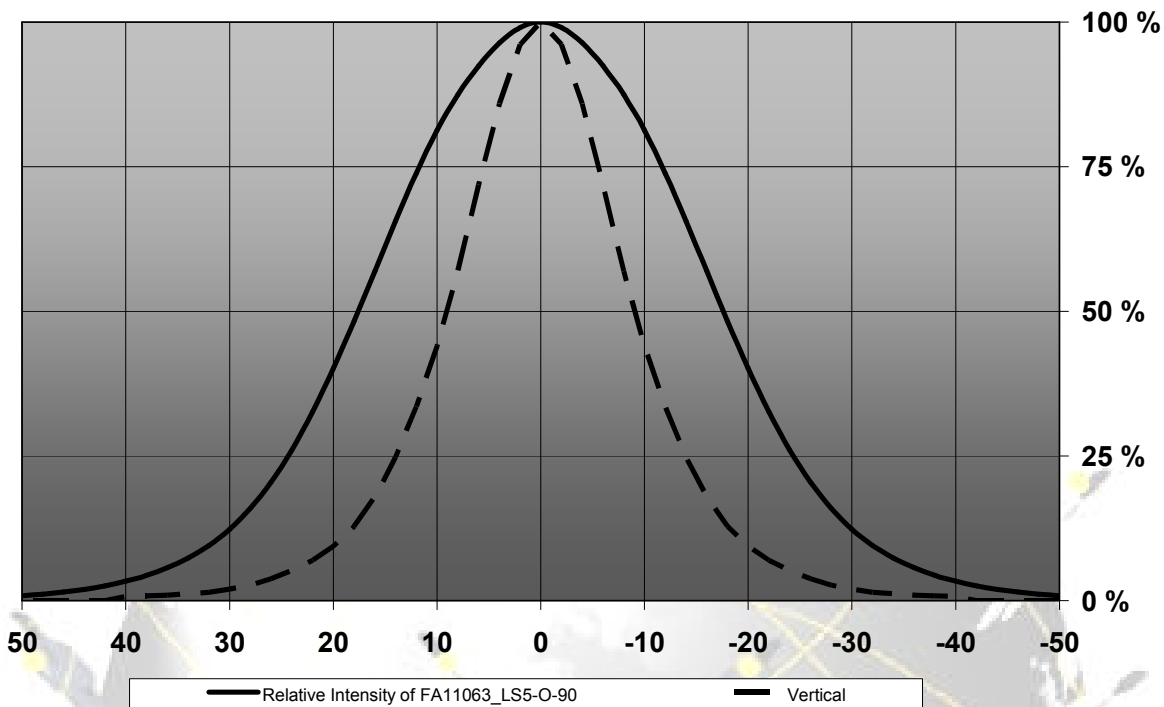
© Ledil Oy – PRELIMINARY - Subject to change without prior notice

Relative Intensity of FA11062_LS5-M



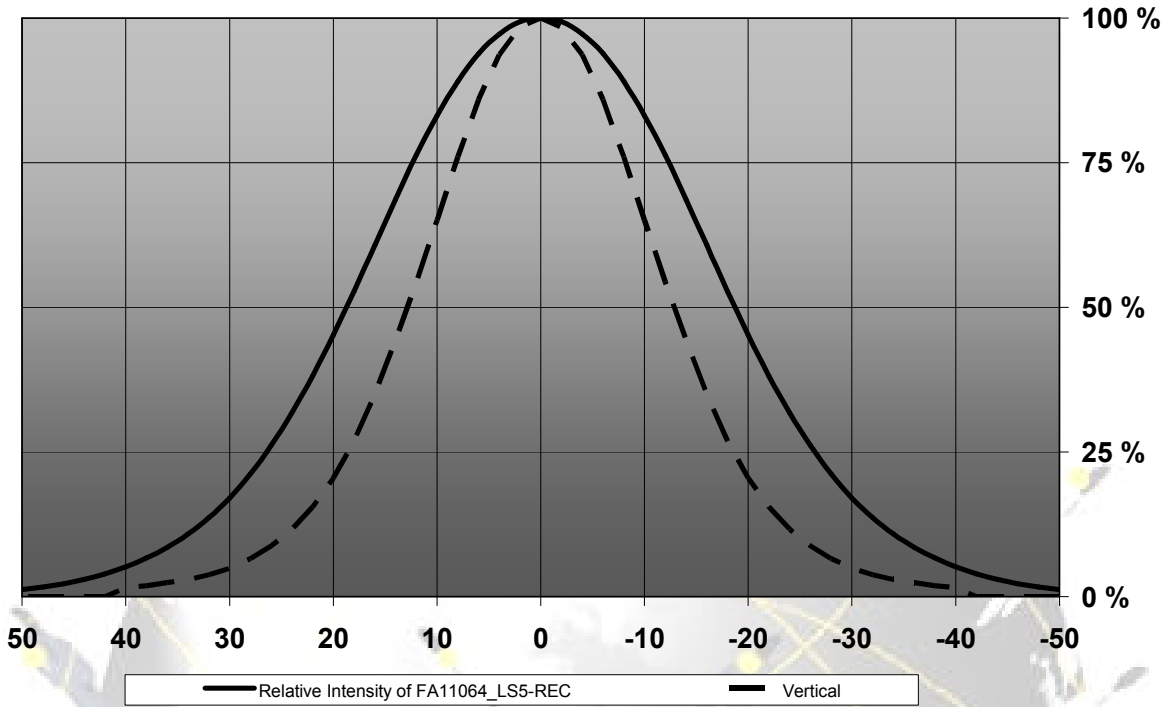
© Ledil Oy – PRELIMINARY - Subject to change without prior notice

Relative Intensity of FA11063_LS5-O-90



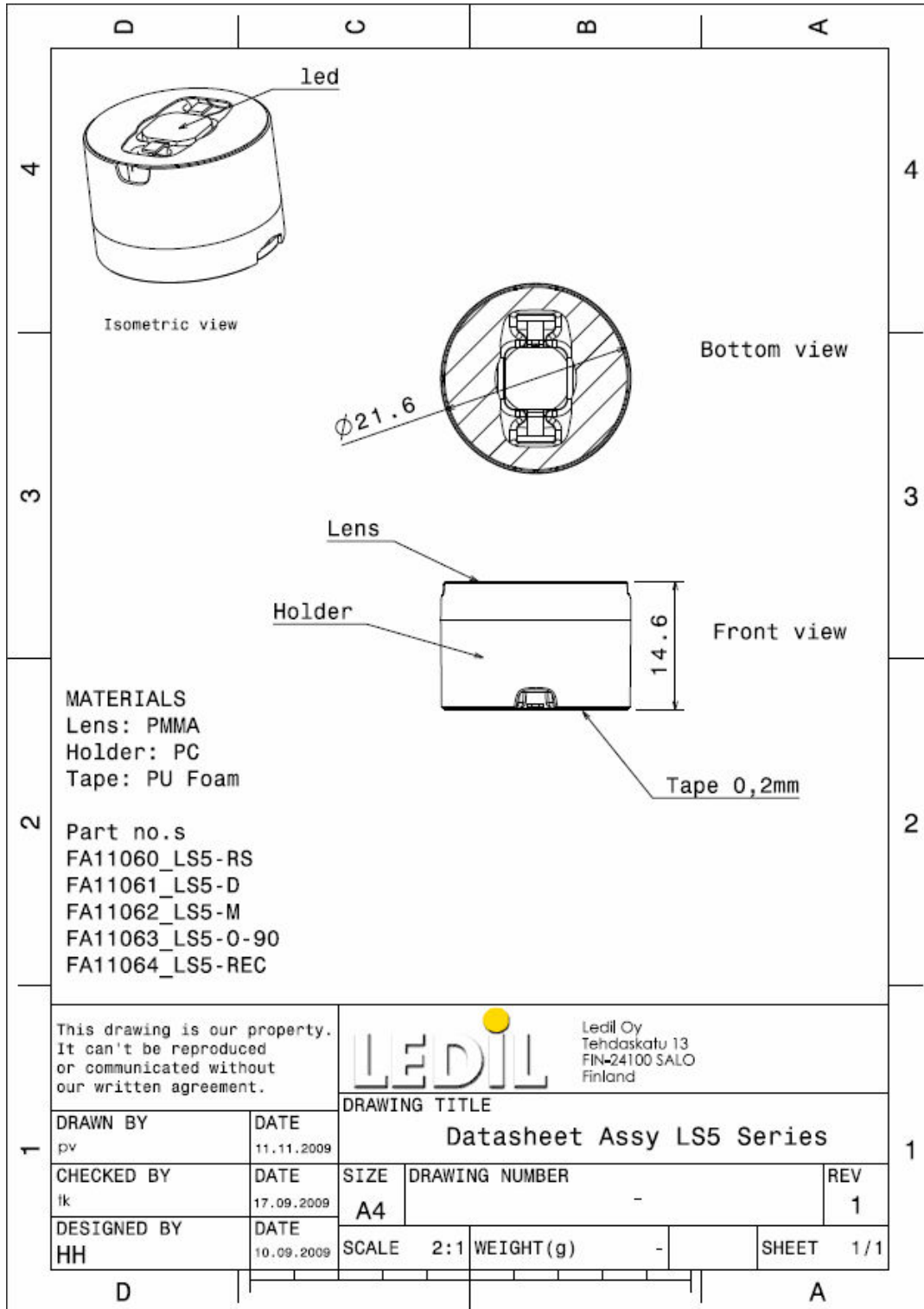
© Ledil Oy – PRELIMINARY - Subject to change without prior notice

Relative Intensity of FA11064_LS5-REC



© Ledil Oy – PRELIMINARY - Subject to change without prior notice

DRAWINGS



© Ledit Oy – PRELIMINARY - Subject to change without prior notice