

# .040 MULTILOCK Connectors (Mark II) Wire-to-Board Applications

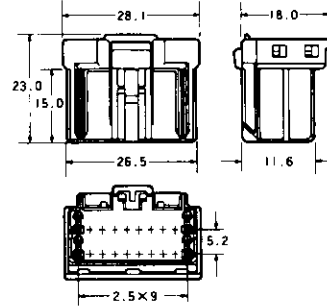
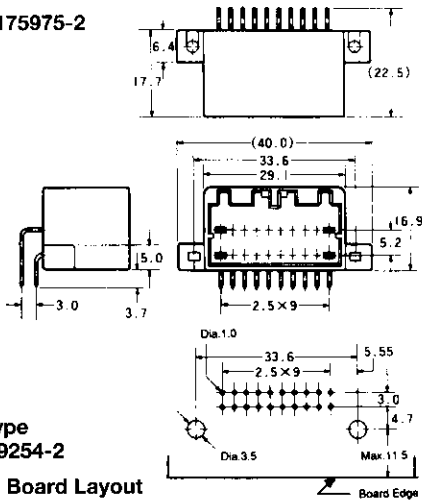
## Cap (Horizontal Mount Type)

## Plug

Part Number : □-175975-2

**20  
Pos.**

Part Number : □-175967-2

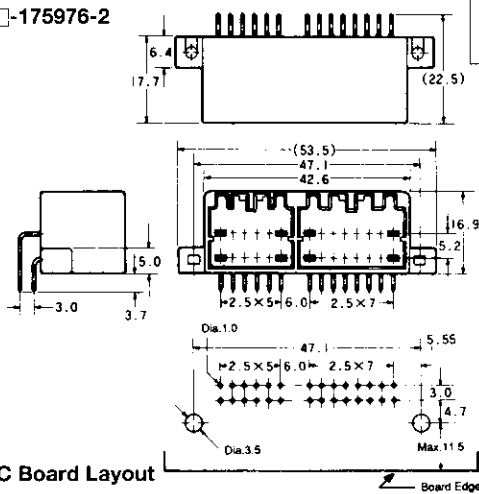


Vertical Mount Type  
Part Number : 179254-2

PC Board Layout

Part Number : □-175976-2

**28  
Pos.**



Accepts 12 pos. and 16 pos. plugs.

12 pos. plugs.

Part Number : 175965-2

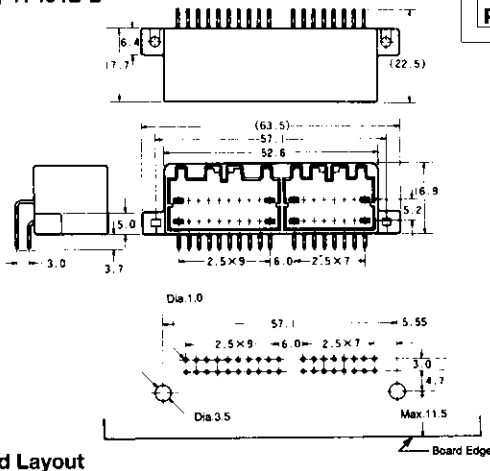
16 pos. plugs.

Part Number : 175966-2

PC Board Layout

Part Number : □-174912-2

**36  
Pos.**



Accepts 20 pos. and 16 pos. plugs.

20 pos. plugs.

Part Number : 175967-2

16 pos. plugs.

Part Number : 175966-2

PC Board Layout

- \*The color of housing is black, and that of double lock plate is white.
- \*The material of housings, cap is of PBT with glass, plug and double lock plate are of PBT.
- \*The materials and finish of tab contacts are of pretinned brass.
- \*The figures in □ before part numbers vary according to finishes, configurations, etc.

5