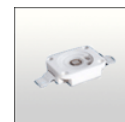
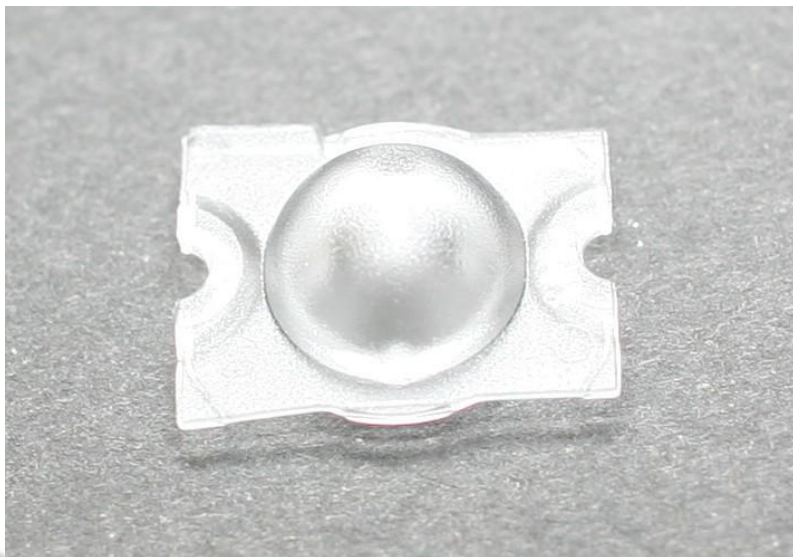


## STRADA-C-GD LENSES FOR OSRAM-OS DRAGON SERIES OF LEDs



- Specially designed for Osram-os Golden Dragon Plus LEDs.
- New extremely wide BATWING design with very and uniform light distribution.
- Lens material optical grade PMMA. Allows use of high current and temperature conditions
- Best available optical efficiency, approximately 95%.
- Fastening to heat sink with or without PU foam adhesive tape of automotive grade, please select which suits the best for your needs.

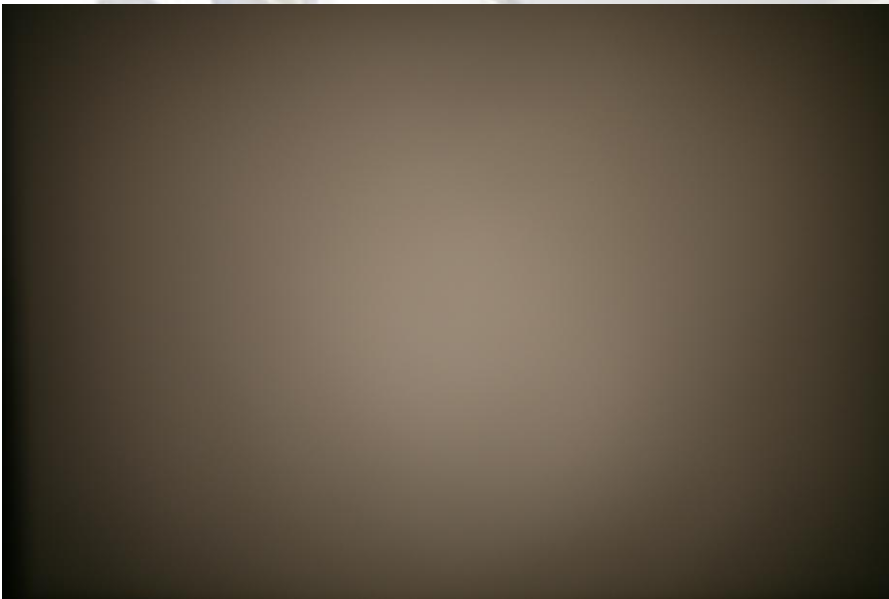
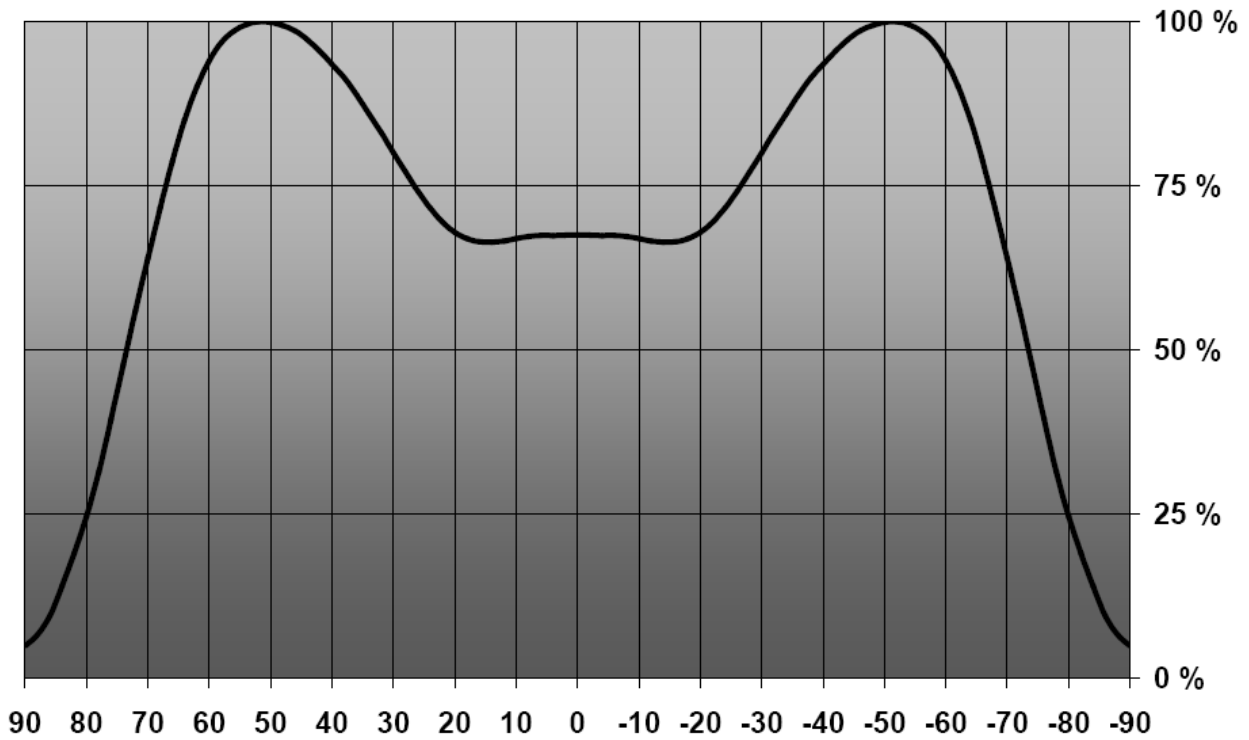
### LENS TYPES

| NAME             | ORDERING CODE           | FWHM Angle |
|------------------|-------------------------|------------|
| Strada-CGD       | C10915_Strada-C-GD      | ±73°       |
| Strada-C-GD-TAPE | C10916_Strada-C-GD-tape | ±73°       |

EULUMDAT & IES FILES AVAILABLE BY REQUEST

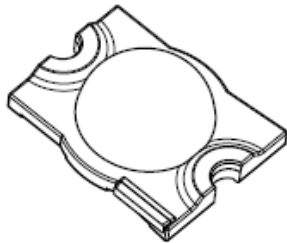
## MEASUREMENT DATA

Relative Intensity of C10915\_Strada-C-GD



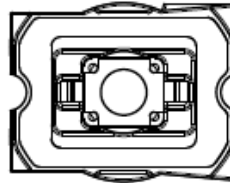
© Ledil Oy – PRELIMINARY - Subject to change without prior notice

## DRAWING

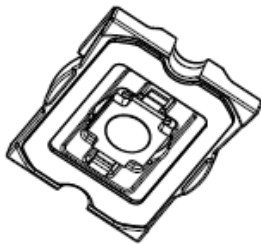
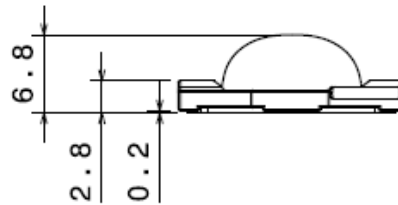


Isometric view

Bottom view

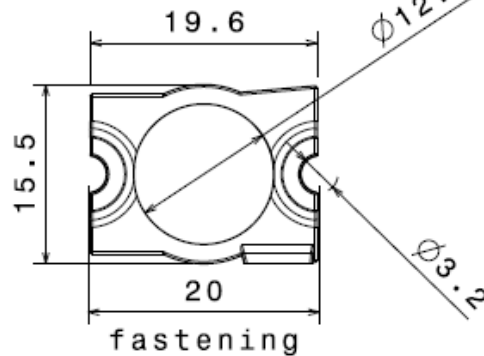


Front view



Isometric view

Top view



Material: PMMA

Part no. lens only:  
C10915 (height: -0.15mm)

This drawing is our property.  
It can't be reproduced  
or communicated without  
our written agreement.

Ledil Oy  
Tehdaskatu 13  
FIN-24100 SALO  
Finland

DRAWING TITLE

Datasheet Strada-C-GD Assy

|                   |                    |            |  |                           |           |
|-------------------|--------------------|------------|--|---------------------------|-----------|
| DRAWN BY<br>ol    | DATE<br>16.12.2009 | SIZE<br>A4 |  | DRAWING NUMBER<br>CA10916 | REV<br>1  |
| CHECKED BY<br>hh  | DATE<br>16.12.2009 | SCALE 2:1  |  | WEIGHT(g)                 | SHEET 1/1 |
| DESIGNED BY<br>ol | DATE<br>16.12.2009 |            |  |                           |           |

© Ledil Oy – PRELIMINARY - Subject to change without prior notice