

IEC Appliance Inlet C14 with Filter, Line Switch 1- or 2-pole, Front or Rear Side Mounting

Standard- or Medical-Filter



Screw-on Version
from front side



Snap-In Version
from front side



Screw-on Version
from front side, protection class II



Description

- Panel Mount:
Screw-on version from front or rear side, snap-in version from front side
- 3 Functions:
Appliance Inlet protection class I or II, Line Switch 1- or 2-pole, Line filter in standard and medical version
- Quick connect terminals 6.3 x 0.8 mm

Approvals

- VDE Certificate Number: 40001522
- UL File Number: E72928

Characteristics

- Compact design with optimal shielding
- Rear side mounting for efficient cost-saving assembly
- All single elements are already wired
- Line switch non-illuminated or illuminated
- Universal line filter for standard applications
- Ideal for application with high transient loads
- Suitable for use in equipment according to IEC/UL 60950
- Suitable for use in medical equipment according to IEC/UL 60601-1

Other versions on request

- Solder terminals
- Other rocker marking
- Capacitance CX1

References

Alternative: version without line filter [DC11](#)
Substitute for type [KFB1](#); [KFB2](#)

Weblinks

[pdf-datasheet](#), [html-datasheet](#), [General Product Information](#), [Approvals](#), [CE declaration of conformity](#), [RoHS](#), [CHINA-RoHS](#), [REACH](#), [Mating Connectors](#), [e-Shop](#), [SCHURTER-Stock-Check](#), [Distributor-Stock-Check](#), [CAD-Drawings](#), [Accessories](#), [Wire Harnessing](#), [Detailed request for product](#)

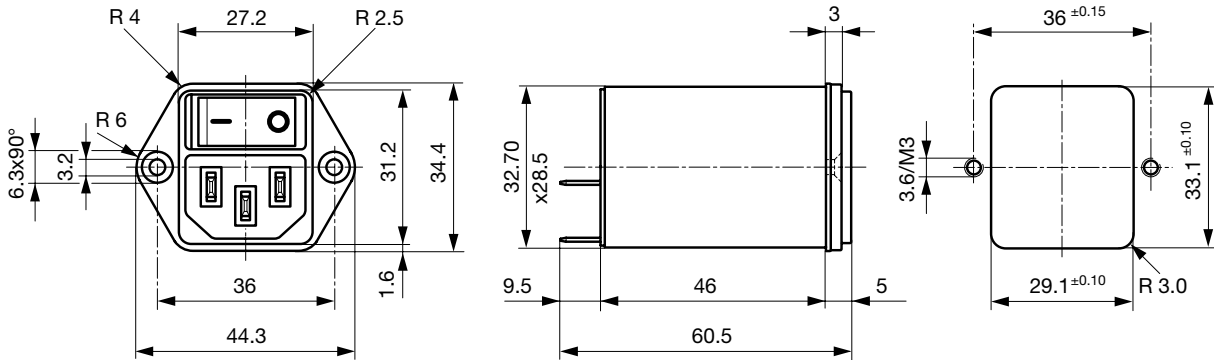
Newly available variants corresponding to V-Lock mating cordset. The connector is equipped with a notch intended for use with the latching cordset. The cord latching system prevents against accidental removal of the cordset.

Technical Data

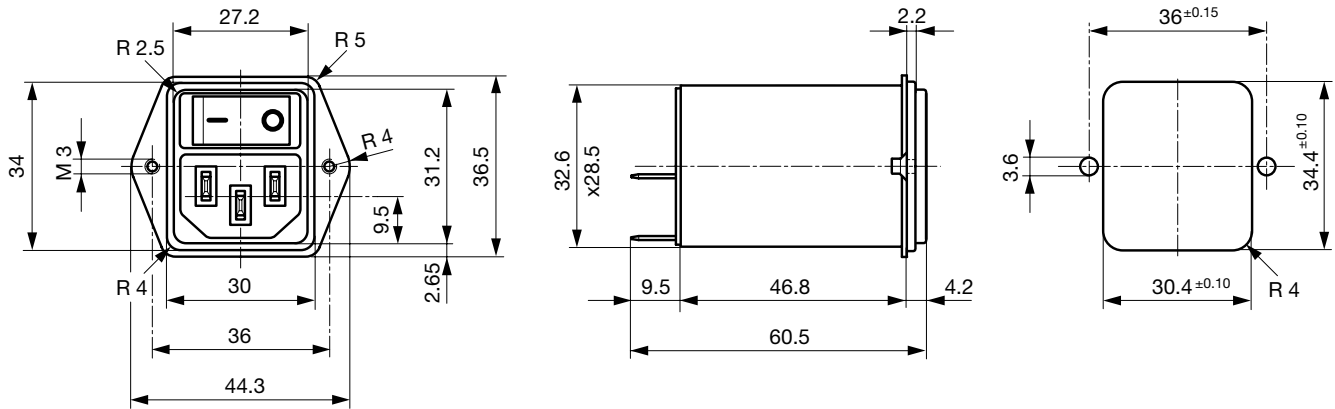
| | | | |
|---------------------------|-----------------------------------------------------------------------------|-------------------------|------------------------------------------------------------------------------------------------------------------------------------|
| Ratings IEC | 1 - 10A @ Ta 40 °C / 250VAC; 50Hz | Appliance-Inlet/-Outlet | C14 / C18 acc. to IEC 60320-1, UL 498, CSA C22.2 no. 42 (for cold conditions) pin-temperature 70 °C, 10A, Protection Class I or II |
| Ratings UL/CSA | 1 - 10A @ Ta 40 °C / 125VAC; 60Hz | Line Switch | Rocker switch 1 or 2 pole, non-illuminated or illuminated, acc. to IEC 61058-1 Technical Details |
| Leakage Current | standard < 0.5mA (250V / 60Hz) medical < 5 µA (250 V / 60 Hz) | Line Filter | Standard and Medical Version, IEC 60939, UL 1283, CSA C22.2 no. 8 Technical Details |
| Dielectric Strength | > 1.7kVDC between L-N > 2.7kVDC between L/N-PE Test voltage (2sec) | MTBF | > 1'900'000h acc. to MIL-HB-217 F |
| Allowable Operation Temp. | -25 °C to 85 °C | | |
| Climatic Category | 25/085/21 acc. to IEC 60068-1 | | |
| Degree of Protection | from front side IP 40 acc. to IEC 60529 | | |
| Protection Class | Suitable for appliances with protection class I or II acc. to IEC 61140 | | |
| Terminal | Quick connect terminals 6.3 x 0.8 mm | | |
| Panel Thickness s | Screw: max 8 mm Mounting screw torque max 0.5Nm Snap-in: 1 mm to 3 mm | | |
| Material: Housing | Thermoplastic, black / white, UL 94V-0 | | |

Dimensions

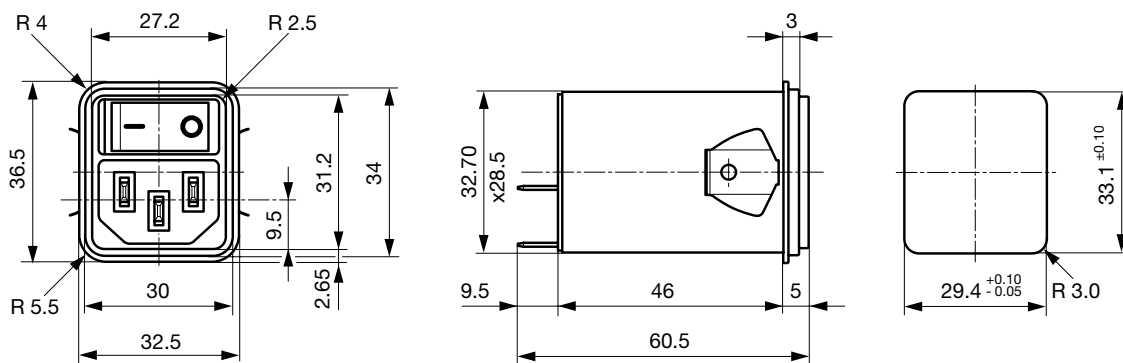
Screw-on mounting from front side



Screw-On Version from rear side (metal flange)



Snap-in mounting from front side

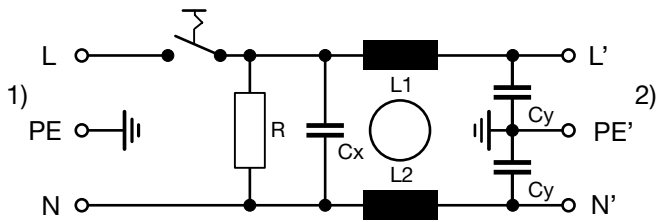


Technical Data of Filter-Components

| Rated Current [A] | Filter-Type | Inductances L [mH] | Capacitance CX [nF] | Capacitance CY [nF] | R [MΩ] |
|-------------------|-----------------------|--------------------|---------------------|---------------------|--------|
| 1 | Standard Version | 2 x 10 | 100 | 2.2 | 1 |
| 2 | Standard Version | 2 x 4 | 100 | 2.2 | 1 |
| 4 | Standard Version | 2 x 1.5 | 100 | 2.2 | 1 |
| 6 | Standard Version | 2 x 0.8 | 100 | 2.2 | 1 |
| 10 | Standard Version | 2 x 0.3 | 100 | 2.2 | 1 |
| 1 | Medical Version (M5) | 2 x 10 | 100 | - | 1 |
| 2 | Medical Version (M5) | 2 x 4 | 100 | - | 1 |
| 4 | Medical Version (M5) | 2 x 1.5 | 100 | - | 1 |
| 6 | Medical Version (M5) | 2 x 0.8 | 100 | - | 1 |
| 10 | Medical Version (M5) | 2 x 0.3 | 100 | - | 1 |
| 1 | Medical Version (M80) | 2 x 10 | 100 | 0.47 | 1 |
| 2 | Medical Version (M80) | 2 x 4 | 100 | 0.47 | 1 |
| 4 | Medical Version (M80) | 2 x 1.5 | 100 | 0.47 | 1 |
| 6 | Medical Version (M80) | 2 x 0.8 | 100 | 0.47 | 1 |
| 10 | Medical Version (M80) | 2 x 0.3 | 100 | 0.47 | 1 |

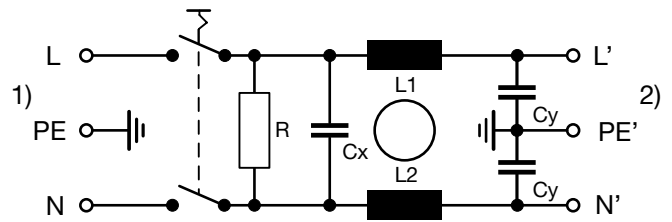
Diagrams

Standard filter 1-pole



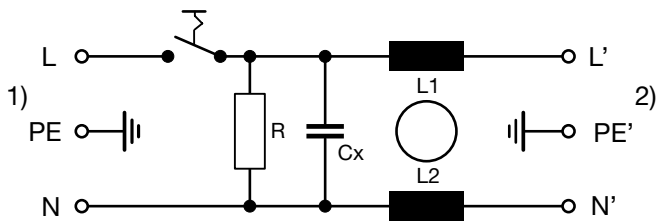
1) Line
2) Load

Standard filter 2-pole



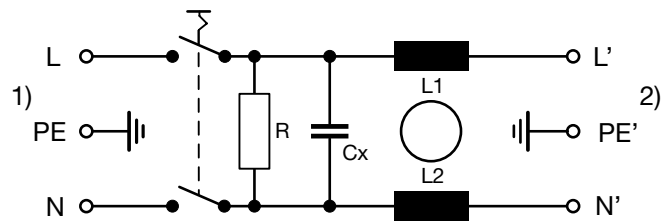
1) Line
2) Load

Medical filter 1-pole (M5)



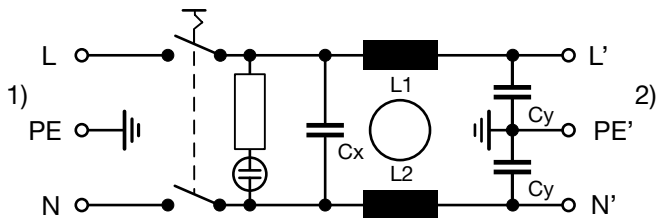
1) Line
2) Load

Medical filter 2-pole (M5)



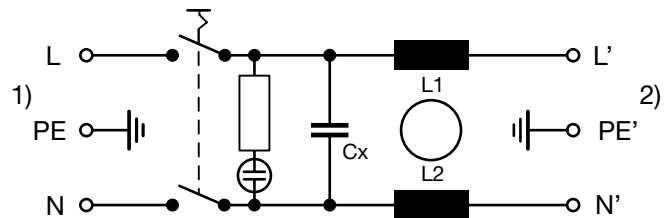
1) Line
2) Load

Standard filter 2-pole illuminated



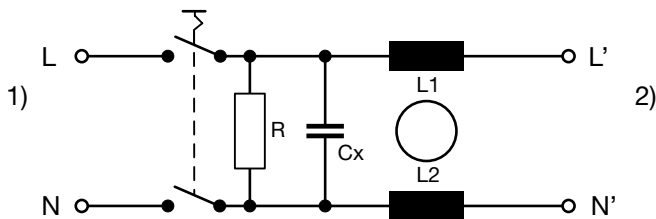
1) Line
2) Load

Medical Filter 2-pole (M5) illuminated



1) Line
2) Load

Medical filter 2-pole (M5) protection class II

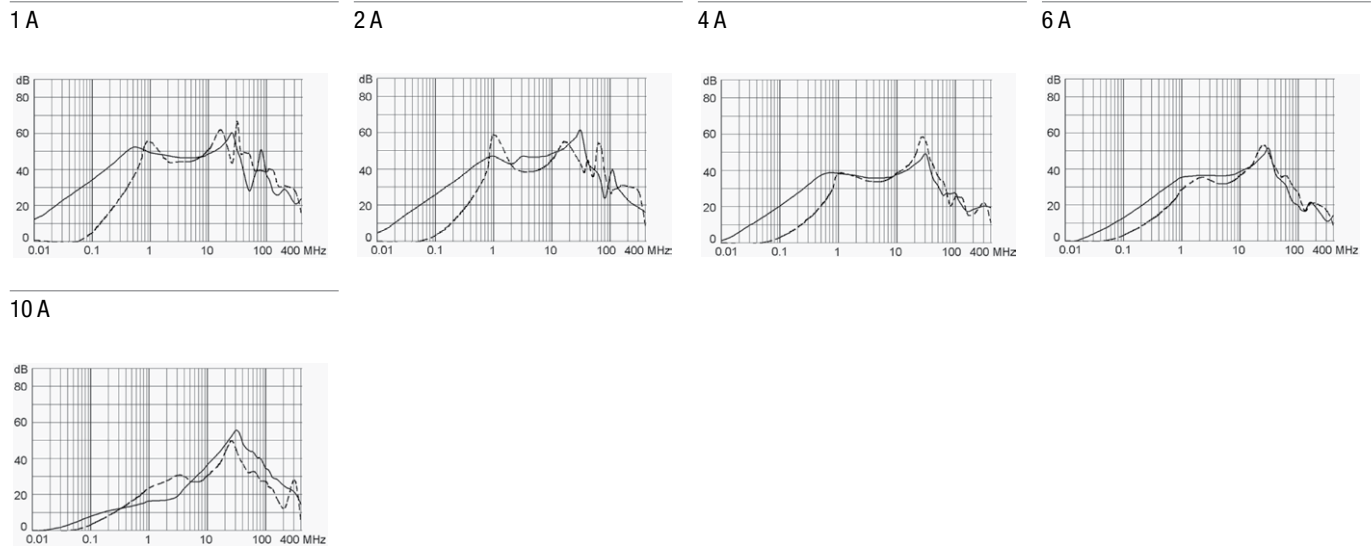


1) Line
2) Load

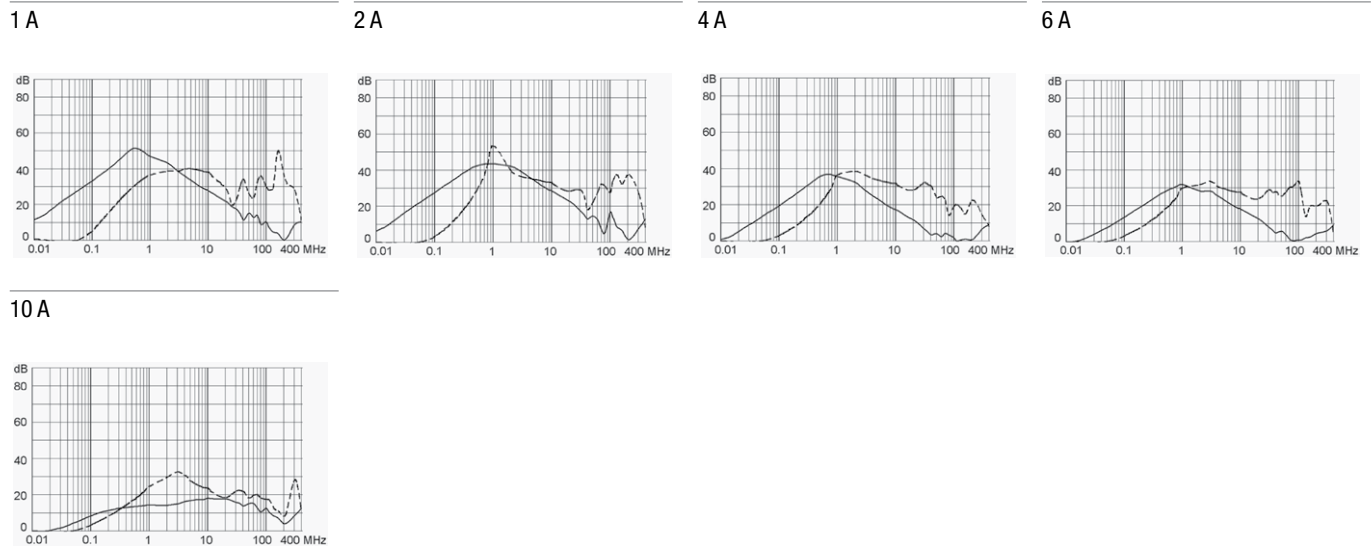
Attenuation Loss

Standard version

--- 50Ω differential mode ___ 50Ω common mode



Medical version (M5)



All Variants

| Rated current | Filter-Type | Panel mounting | Mounting side | Line Switch | Illumination | Color | Pro-tection | Order Number |
|---------------|------------------|----------------|---------------|-------------|-----------------|-------|-------------|-------------------------------|
| 1 | Standard Version | Snap-in | Front Side | 1-pole | non-illuminated | black | I | DC12.1102.103 |
| 2 | Standard Version | Snap-in | Front Side | 1-pole | non-illuminated | black | I | DC12.2102.103 |
| 4 | Standard Version | Snap-in | Front Side | 1-pole | non-illuminated | black | I | DC12.3102.103 |
| 6 | Standard Version | Snap-in | Front Side | 1-pole | non-illuminated | black | I | DC12.4102.103 |
| 10 | Standard Version | Snap-in | Front Side | 1-pole | non-illuminated | black | I | DC12.5102.103 |
| 1 | Standard Version | Snap-in | Front Side | 2-pole | non-illuminated | black | I | DC12.1102.101 |
| 2 | Standard Version | Snap-in | Front Side | 2-pole | non-illuminated | black | I | DC12.2102.101 |
| 4 | Standard Version | Snap-in | Front Side | 2-pole | non-illuminated | black | I | DC12.3102.101 |
| 6 | Standard Version | Snap-in | Front Side | 2-pole | non-illuminated | black | I | DC12.4102.101 |
| 10 | Standard Version | Snap-in | Front Side | 2-pole | non-illuminated | black | I | DC12.5102.101 |
| 1 | Standard Version | Screw | Front Side | 1-pole | non-illuminated | black | I | DC12.1102.003 |
| 2 | Standard Version | Screw | Front Side | 1-pole | non-illuminated | black | I | DC12.2102.003 |
| 4 | Standard Version | Screw | Front Side | 1-pole | non-illuminated | black | I | DC12.3102.003 |
| 6 | Standard Version | Screw | Front Side | 1-pole | non-illuminated | black | I | DC12.4102.003 |
| 10 | Standard Version | Screw | Front Side | 1-pole | non-illuminated | black | I | DC12.5102.003 |

| Rated current | Filter-Type | Panel mounting | Mounting side | Line Switch | Illumination | Color | Pro-tection | Order Number |
|---------------|----------------------|----------------|---------------|-------------|-------------------|-------|-------------|------------------|
| 10 | Standard Version | Screw | Front Side | 1-pole | non-illuminated | black | I | DC12.5102.003.21 |
| 1 | Standard Version | Screw | Front Side | 2-pole | non-illuminated | black | I | DC12.1102.001 |
| 2 | Standard Version | Screw | Front Side | 2-pole | non-illuminated | black | I | DC12.2102.001 |
| 4 | Standard Version | Screw | Front Side | 2-pole | non-illuminated | black | I | DC12.3102.001 |
| 6 | Standard Version | Screw | Front Side | 2-pole | non-illuminated | black | I | DC12.4102.001 |
| 10 | Standard Version | Screw | Front Side | 2-pole | non-illuminated | black | I | DC12.5102.001 |
| 10 | Standard Version | Screw | Front Side | 2-pole | non-illuminated | black | I | DC12.5102.001.21 |
| 1 | Standard Version | Screw | Rear Side | 1-pole | non-illuminated | black | I | DC12.1102.203 |
| 2 | Standard Version | Screw | Rear Side | 1-pole | non-illuminated | black | I | DC12.2102.203 |
| 4 | Standard Version | Screw | Rear Side | 1-pole | non-illuminated | black | I | DC12.3102.203 |
| 6 | Standard Version | Screw | Rear Side | 1-pole | non-illuminated | black | I | DC12.4102.203 |
| 10 | Standard Version | Screw | Rear Side | 1-pole | non-illuminated | black | I | DC12.5102.203 |
| 1 | Standard Version | Screw | Rear Side | 2-pole | non-illuminated | black | I | DC12.1102.201 |
| 2 | Standard Version | Screw | Rear Side | 2-pole | non-illuminated | black | I | DC12.2102.201 |
| 4 | Standard Version | Screw | Rear Side | 2-pole | non-illuminated | black | I | DC12.3102.201 |
| 6 | Standard Version | Screw | Rear Side | 2-pole | non-illuminated | black | I | DC12.4102.201 |
| 10 | Standard Version | Screw | Rear Side | 2-pole | non-illuminated | black | I | DC12.5102.201 |
| 1 | Medical Version (M5) | Snap-in | Front Side | 1-pole | non-illuminated | black | I | DC12.1202.103 |
| 2 | Medical Version (M5) | Snap-in | Front Side | 1-pole | non-illuminated | black | I | DC12.2202.103 |
| 4 | Medical Version (M5) | Snap-in | Front Side | 1-pole | non-illuminated | black | I | DC12.3202.103 |
| 6 | Medical Version (M5) | Snap-in | Front Side | 1-pole | non-illuminated | black | I | DC12.4202.103 |
| 10 | Medical Version (M5) | Snap-in | Front Side | 1-pole | non-illuminated | black | I | DC12.5202.103 |
| 1 | Medical Version (M5) | Snap-in | Front Side | 2-pole | non-illuminated | black | I | DC12.1202.101 |
| 1 | Medical Version (M5) | Snap-in | Front Side | 2-pole | non-illuminated | black | II | DC12.1202.121 |
| 1 | Medical Version (M5) | Snap-in | Front Side | 2-pole | non-illuminated | white | II | DC12.1202.131 |
| 2 | Medical Version (M5) | Snap-in | Front Side | 2-pole | non-illuminated | black | I | DC12.2202.101 |
| 2 | Medical Version (M5) | Snap-in | Front Side | 2-pole | non-illuminated | black | II | DC12.2202.121 |
| 2 | Medical Version (M5) | Snap-in | Front Side | 2-pole | non-illuminated | white | II | DC12.2202.131 |
| 4 | Medical Version (M5) | Snap-in | Front Side | 2-pole | non-illuminated | black | I | DC12.3202.101 |
| 4 | Medical Version (M5) | Snap-in | Front Side | 2-pole | non-illuminated | black | II | DC12.3202.121 |
| 4 | Medical Version (M5) | Snap-in | Front Side | 2-pole | non-illuminated | white | II | DC12.3202.131 |
| 6 | Medical Version (M5) | Snap-in | Front Side | 2-pole | non-illuminated | black | I | DC12.4202.101 |
| 6 | Medical Version (M5) | Snap-in | Front Side | 2-pole | non-illuminated | black | II | DC12.4202.121 |
| 6 | Medical Version (M5) | Snap-in | Front Side | 2-pole | non-illuminated | white | II | DC12.4202.131 |
| 10 | Medical Version (M5) | Snap-in | Front Side | 2-pole | non-illuminated | black | I | DC12.5202.101 |
| 10 | Medical Version (M5) | Snap-in | Front Side | 2-pole | non-illuminated | black | II | DC12.5202.121 |
| 10 | Medical Version (M5) | Snap-in | Front Side | 2-pole | non-illuminated | white | II | DC12.5202.131 |
| 6 | Medical Version (M5) | Snap-in | Front Side | 2-pole | illuminated green | black | I | DC12.4232.101 |
| 1 | Medical Version (M5) | Screw | Front Side | 1-pole | non-illuminated | black | I | DC12.1202.003 |
| 2 | Medical Version (M5) | Screw | Front Side | 1-pole | non-illuminated | black | I | DC12.2202.003 |
| 4 | Medical Version (M5) | Screw | Front Side | 1-pole | non-illuminated | black | I | DC12.3202.003 |
| 6 | Medical Version (M5) | Screw | Front Side | 1-pole | non-illuminated | black | I | DC12.4202.003 |
| 10 | Medical Version (M5) | Screw | Front Side | 1-pole | non-illuminated | black | I | DC12.5202.003 |
| 1 | Medical Version (M5) | Screw | Front Side | 2-pole | non-illuminated | black | I | DC12.1202.001 |
| 1 | Medical Version (M5) | Screw | Front Side | 2-pole | non-illuminated | black | II | DC12.1202.021 |
| 1 | Medical Version (M5) | Screw | Front Side | 2-pole | non-illuminated | white | II | DC12.1202.031 |
| 2 | Medical Version (M5) | Screw | Front Side | 2-pole | non-illuminated | black | I | DC12.2202.001 |
| 2 | Medical Version (M5) | Screw | Front Side | 2-pole | non-illuminated | black | II | DC12.2202.021 |
| 2 | Medical Version (M5) | Screw | Front Side | 2-pole | non-illuminated | white | II | DC12.2202.031 |
| 4 | Medical Version (M5) | Screw | Front Side | 2-pole | non-illuminated | black | I | DC12.3202.001 |
| 4 | Medical Version (M5) | Screw | Front Side | 2-pole | non-illuminated | black | II | DC12.3202.021 |
| 4 | Medical Version (M5) | Screw | Front Side | 2-pole | non-illuminated | white | II | DC12.3202.031 |
| 6 | Medical Version (M5) | Screw | Front Side | 2-pole | non-illuminated | black | I | DC12.4202.001 |
| 6 | Medical Version (M5) | Screw | Front Side | 2-pole | non-illuminated | black | I | DC12.4202.001.21 |
| 6 | Medical Version (M5) | Screw | Front Side | 2-pole | non-illuminated | black | II | DC12.4202.021 |

| Rated current | Filter-Type | Panel mounting | Mounting side | Line Switch | Illumination | Color | Pro-tection | Order Number |
|---------------|-----------------------|----------------|---------------|-------------|-----------------|-------|-------------|------------------|
| 6 | Medical Version (M5) | Screw | Front Side | 2-pole | non-illuminated | white | II | DC12.4202.031 |
| 10 | Medical Version (M5) | Screw | Front Side | 2-pole | non-illuminated | black | I | DC12.5202.001 |
| 10 | Medical Version (M5) | Screw | Front Side | 2-pole | non-illuminated | black | I | DC12.5202.001.21 |
| 10 | Medical Version (M5) | Screw | Front Side | 2-pole | non-illuminated | black | II | DC12.5202.021 |
| 10 | Medical Version (M5) | Screw | Front Side | 2-pole | non-illuminated | white | II | DC12.5202.031 |
| 1 | Medical Version (M5) | Screw | Rear Side | 2-pole | non-illuminated | black | I | DC12.1202.201 |
| 2 | Medical Version (M5) | Screw | Rear Side | 2-pole | non-illuminated | black | I | DC12.2202.201 |
| 4 | Medical Version (M5) | Screw | Rear Side | 2-pole | non-illuminated | black | I | DC12.3202.201 |
| 6 | Medical Version (M5) | Screw | Rear Side | 2-pole | non-illuminated | black | I | DC12.4202.201 |
| 10 | Medical Version (M5) | Screw | Rear Side | 2-pole | non-illuminated | black | I | DC12.5202.201 |
| 1 | Medical Version (M80) | Screw | Rear Side | 2-pole | non-illuminated | black | I | DC12.1602.201 |
| 2 | Medical Version (M80) | Screw | Rear Side | 2-pole | non-illuminated | black | I | DC12.2602.201 |
| 4 | Medical Version (M80) | Screw | Rear Side | 2-pole | non-illuminated | black | I | DC12.3602.201 |
| 6 | Medical Version (M80) | Screw | Rear Side | 2-pole | non-illuminated | black | I | DC12.4602.201 |
| 10 | Medical Version (M80) | Screw | Rear Side | 2-pole | non-illuminated | black | I | DC12.5602.201 |

Most Popular.

Availability for all products can be searched real-time: <http://www.schurter.com/en/Stock-Check/Stock-Check-SCHURTER>

Suffix "21" corresponds to the version with V-Lock mating cordset. The connector is equipped with a notch intended for use with the latching cordset. The cord latching system prevents against accidental removal of the cordset. Available only for screw-on versions.

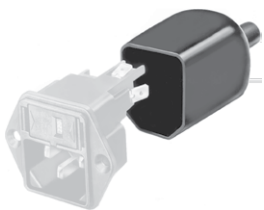
Packaging unit 10 Pcs

Accessories

Description



Wire Harness
Wire harness for SCHURTER products



Assorted Covers
Rear Cover



Cord retaining kits
Cord retaining strain relief

| | |
|----------------|-----------|
| Flat head, A | 4700.0001 |
| Countersunk, B | 4700.0002 |

Mating Outlets/Connectors

Category / Description

Connector Overview complete



| | |
|----------------------------------------------------------------------------------------------|---------|
| 4782 Mounting: Power Cord, 3 x 1 mm ² / 3 x 18 AWG, Cable, Connector: IEC C13 | 4782 |
| 4022 Mounting: Power Supply Cord, 3 x 1.5 mm ² , Screw clamps, Connector: IEC C13 | 4022 |
| 4785 Mounting: Power Cord, 3 x 1 mm ² / 3 x 18 AWG, Cable, Connector: IEC C13 | 4785 |
| 4300-06 Mounting: Power Cord, 3 x 1 mm ² / 3 x 18 AWG, Cable, Connector: IEC C13 | 4300-06 |
| 4012 Mounting: Power Supply Cord, 3 x 1.5 mm ² , Screw clamps, Connector: IEC C13 | 4012 |
| Connector further types to DC12 | ... |

Interconnection Cord Overview complete



| | |
|----------------------------------------------------------------------|-----------|
| Cord Sets 10 A, Interconnection, 1.0 m, Connector IEC C13, cord end: | 6007.0212 |
| Cord Sets 10 A, Interconnection, 2.0 m, Connector IEC C13, cord end: | 6007.0214 |
| Interconnection Cord further types to DC12 | ... |

Power Supply Cord Overview complete



| | |
|---------------------------------------------------------------------------------------------------|-----------|
| Cord Sets 10 A, Europlug, 2.0 m, Connector IEC C13, cord end: | 6004.0114 |
| Cord Sets 10 A, Europlug, 2.5 m, Connector IEC C13, cord end: | 6004.0215 |
| Cord Sets 10 A, Europlug, 2.5 m, Connector IEC C13, cord end: | 6003.0215 |
| Cord Sets 10 A, Europlug, Black, 2.5 m, H05VV-F 3G1,0mm2, Connector IEC C13, 002500 mm, cord end: | 6004.0225 |
| Cord Sets 10 A, diverse, Black, 5.0 m, H05VV-F 3G1,0mm2, Connector IEC C13, 002500 mm, cord end: | 6052.0026 |
| Power Supply Cord further types to DC12 | ... |

Power Supply or Interconnection Cord Overview complete



| | |
|----------------------------------------------------------------------------|-----------|
| Kabelverbindung 10 A, United Kingdom, 2.0 m, Connector IEC C13, cord end: | 6045.0114 |
| Kabelverbindung 10 A, diverse, diverse m, Connector IEC C13, cord end: | 6003.0205 |
| Kabelverbindung 10 A, diverse, diverse m, Connector IEC C13, cord end: | 6026.0205 |
| Kabelverbindung 10 A, diverse, diverse m, Connector IEC C13, cord end: | 6049.0007 |
| Power Supply or Interconnection Cord further types to DC12 | ... |

Mating Outlets/Connectors shuttered



Power Cord Overview complete

| | |
|---------------------------------------------------------|---------|
| VAC13KS, Overview, diverse Connector IEC C13, cord end: | VAC13KS |
| Power Cord further types to DC12 | ... |