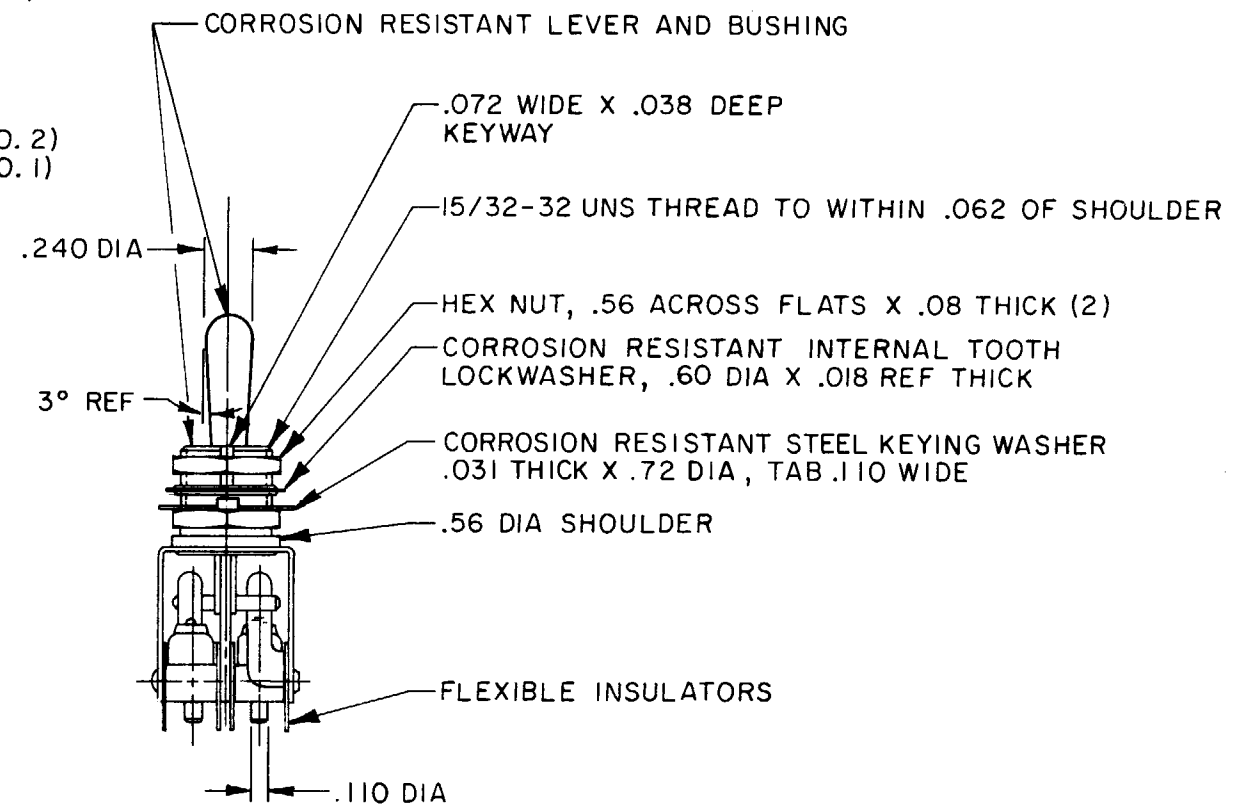
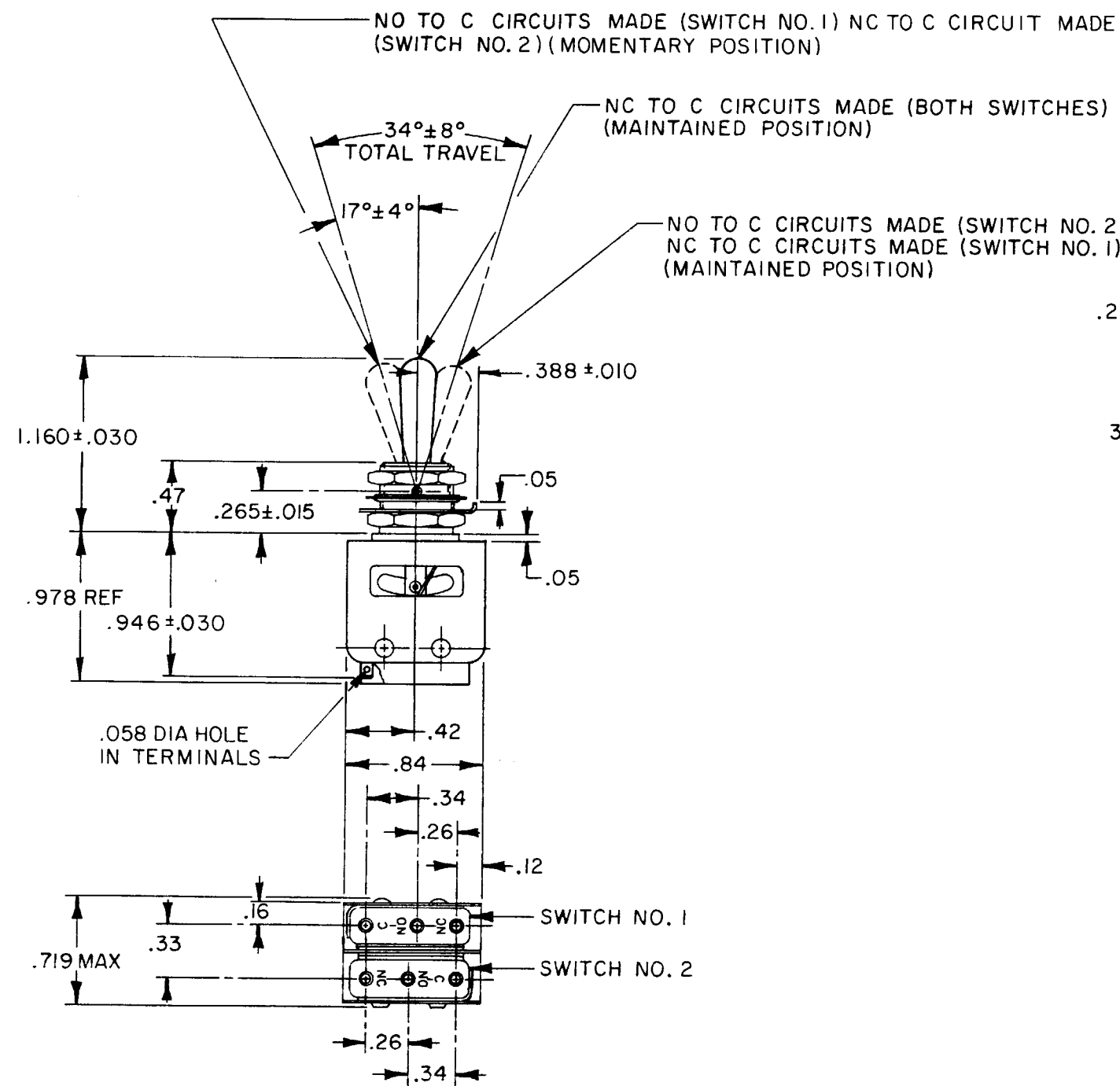


MICRO SWITCH
 FREEPORT, ILLINOIS, U.S.A.
 A DIVISION OF HONEYWELL
 FED. MFG. CODE 91929

**ASSEMBLY -
 TOGGLE SWITCH**

CATALOG LISTING
13AT3

13AT3
 M
 DRAWING NUMBER
 II
 ISSUE
 REVISIONS
 A CO-52725
 K A G
 23 MAY 83
 B CO 66089
 D A W
 8 FEB 91
 CHECK
 MAY 83
 CHECK
 MAY 83
 CHECK
 MAY 83
 DRAWN
 K A G
 23 MAY 83
 PO-92851-B



NOTES
 1 - UNIT INCLUDES (2) CATALOG LISTING "1SM1" TYPE BASIC SWITCHES
 2 - TERMINALS ARE PLATED FOR SOLDERING

THIS DRAWING COVERS A PROPRIETARY ITEM AND IS THE PROPERTY OF MICRO SWITCH, A DIVISION OF HONEYWELL. THIS DRAWING IS NOT TO BE COPIED OR USED WITHOUT THE APPROVAL OF MICRO SWITCH.

SCALE FULL			
DO NOT SCALE PRINT			
TOLERANCES			
APPLY TO DESIGN UNITS. CONVERSIONS ARE ONLY FOR REFERENCE. UNLESS NOTED, TOLERANCES ARE ±			
DIM.	TOL.	DIM.	TOL.
mm	mm/in	in	mm/in
NO PLACES	X	1/64	
ONE PLACE	X,X	0.4/018	X,X 0.8/03
TWO PLACES	X,XX	0.15/008	X,XX 0.38/018
THREE PLACES	X,XXX		X,XXX 0.13/005
ANGLES			
DESIGN UNITS		US CUSTOMARY	
METRIC		US CUSTOMARY	
THIRD ANGLE PROJECTION			
WEIGHT .06 LB			

CHARACTERISTICS	ELECTRICAL DATA
	CONTACT ARRANGEMENT S P D T (2)
	250 VAC----- 5 AMP
	30 VOLTS DC RATING
	INDUCTIVE -----SEA LEVEL-- 3 AMP
	50,000 FT -- 2.5 AMP
	RESISTIVE -----SEA LEVEL-- 5 AMP
	50,000 FT -- 5 AMP
	MAXIMUM INRUSH -----24 AMP