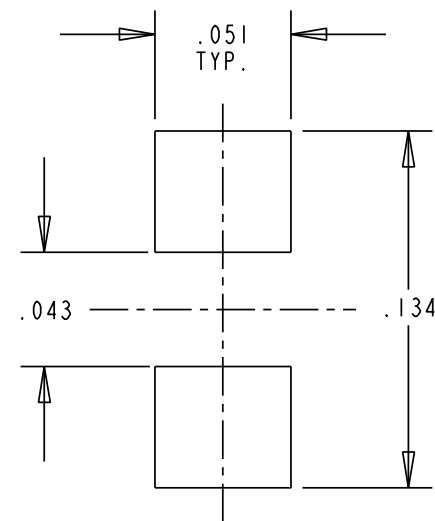
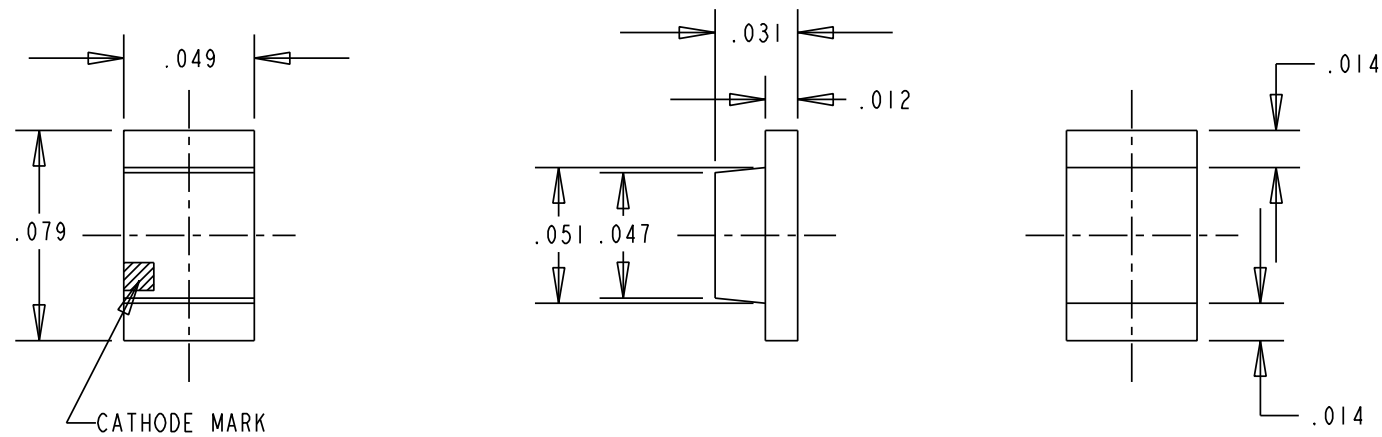


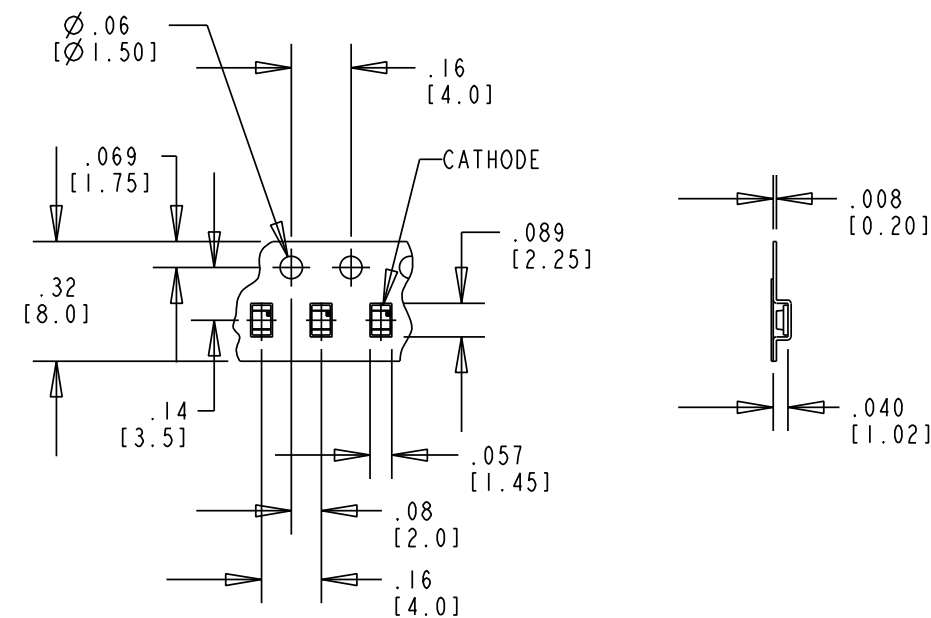
OPERATING CHARACTERISTICS AT 25 °C AMBIENT

DIALIGHT P/N	LED COLOR	LED CHIP MATERIAL	EPOXY COLOR	I <sub>F</sub> (mA)	FORWARD VOLTAGE (V)		LUMINOUS INTENSITY (mcd)			REVERSE CURRENT (μA) (@ V <sub>R</sub> = 5 V)	PEAK WAVELENGTH (nm)	DOMINANT WAVELENGTH (nm)			VIEWING ANGLE (2 θ 1/2) (DEGREES)	REVISIONS			
					TYP.	MAX.	MIN.	TYP.	MAX.	MAX.		MIN.	TYP.	MAX.		REV.	ECN.	DRN.	DATE
597-3003-407	RED	AlInGaP	WHITE DIFFUSED	20	1.9	2.4	25.0	50.0	75.0	100	635	620	626	635	150	D	---	YIS	2-19-03
597-3212-407	ORANGE			20	1.9	2.4	25.0	65.0	105.0	100	609	600	605	612	150	D	---	YIS	2-19-03
597-3222-407	AMBER			20	1.9	2.4	25.0	65.0	105.0	100	592	583	590	597	150	D	---	YIS	2-19-03

REV.	ECN NO.	REVISIONS	DRN.	CKD.	APP.	DATE
A	---	NEW RELEASE	MC		N.O.	7-14-97
B	---	ADDED P/N: 597-3222-407 AND WHITE DIFF. WAS CLEAR DIFF.	MC		D.C.	8-15-97
C	---	ADDED NOTES 2 AND 3.	TC		N.O.	6-9-99
D	---	UPDATED LED SPEC.	YIS			



SOLDER PAD LAYOUT



TAPE & REEL SPECIFICATION  
NO SCALE

NOTES:

- PARTS PACKAGED ON 180 mm DIA. REEL, 8 mm TAPE, 4000/REEL (SEE SKETCH).
- TAPE AND REEL LEDS MAY REQUIRE RE-TAPING AFTER TWELVE MONTHS.
- DIALIGHT PART NUMBER: 597-3003-407, 597-3212-407, 597-3222-407.

ABSOLUTE MAXIMUM RATING AT 25°C AMBIENT	597-XXXX-407			UNITS
	3001 RED	3212 ORANGE	3222 AMBER	
POWER DISSIPATION	81			mW
CONTINUOUS FORWARD CURRENT	30			mA
PEAK FORWARD CURRENT (< 1/20 DUTY CYCLE T <sub>w</sub> < 1 msec)	100			mA
DERATE LINEAR FROM 25 °C	.43			mA/°C
REVERSE VOLTAGE	5			V
OPERATING TEMPERATURE	-40 TO +85			°C
STORAGE TEMPERATURE	-40 TO +100			°C

THIS DRAWING AND THE CONTENTS HEREIN ARE CONFIDENTIAL AND THE SOLE PROPERTY OF DIALIGHT. REPRODUCTION OF THIS DRAWING OR CONSTRUCTION OF ANY PARTS WITHIN THIS DRAWING ARE FORBIDDEN WITHOUT THE WRITTEN CONSENT OF DIALIGHT.

SCALE 12:1	DRAWING NUMBER	REV
ALL DIM'S IN: INCHES (MM)	C-16248	D
TOLERANCES: UNLESS OTHERWISE SPECIFIED	TITLE	
FRACTIONS: ±1/64	SMT LED	
DECIMALS (.XX): ±.02	MATERIAL	
DECIMALS (.XXX): ±.015	Dialight	
ANGLES: ±3°	1501 ROUTE 34 SOUTH FARMINGDALE, NJ 07727	
FINISH:	FSCM 83330	SHEET OF FAMILY TABLE: