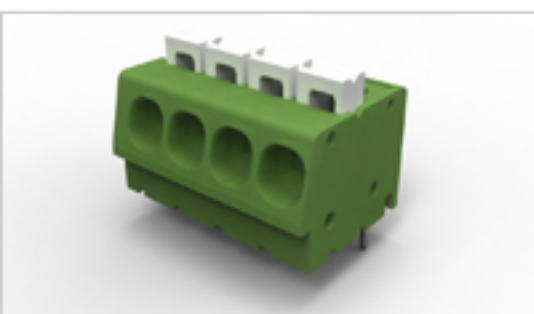


1986711-5 Product Details

[Share](#) | [Print](#) | [Email](#)


Terminal Block Connectors

SCREWLESS, SW,5P,5.0 PCB

1986711-5 

TE Internal Number: 1986711-5

 **Active**

 [View 3D PDF](#)

Product Highlights [View All](#)

- Connector
- Type of Connector = Spring (Straight)
- Not Shrouded
- Housing Color = Green
- Side Stackable

[Pricing & Availability](#) 

[Request Sample](#) 

[Add to My Part List](#) 

[Buy Product through Distributor](#) 

[Documents](#) | [Features](#) | [Compliance](#)

Related Products

Not quite the product you're looking for?
[Find Similar Products](#)

[View Part in Product Feature Selector](#)

[Check for Tooling](#)

Feedback

Please Note:
Use the Product Drawing for all design activity

Product Type Features

Product Type 	Connector
Type of Connector	Spring (Straight)
Mount Angle 	Vertical





Electrical Characteristics

Current Rating, Max. (A)	16
Voltage (VAC)	300

Dimensions

Pin Length (mm [in])	3.50 [0.138]
----------------------	--------------


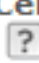
Body Features

Wire Entry Diameter (Solid Wire) (mm ²) 	0.05 - 3.00
Wire Entry Diameter (Stranded Wire) (mm ²) 	0.05 - 3.00
Wire Entry Angle 	Side
Interlock 	Without
Wire Range (mm [AWG])	0.05-3.00 ² [30-12]
Lever Color	White

Contact Features

Contact Plating, Mating Area, Material	Tin over Copper Alloy
--	-----------------------

Housing Features

Housing Color 	Green
Centerline (mm [in]) 	5.00 [0.197]
Housing Material	Polyamide - GF

Configuration Features

Shrouded 	No
Side Stackable 	Yes
Threaded Flange 	Without
Screw Flange 	Without
Number of Positions 	5
Number of Rows 	Single

Industry Standards

RoHS/ELV Compliance 	RoHS compliant, ELV compliant
Lead Free Solder Processes 	Wave solder capable to 240°C, Wave solder capable to 260°C, Wave solder capable to 265°C
RoHS/ELV Compliance History	Always was RoHS compliant
UL File Number	E60677

Other

Brand	TE Connectivity
Node Classification	Terminal Block Headers & Receptacles

Corporate Information

- [About TE](#)
- [Investors](#)
- [News Room](#)
- [Supplier Portal](#)
- [Careers](#)
- [Terms & Conditions](#)
- [Privacy Policy](#)
- [Global Accessibility Statement](#)

Quick Links

- [Distributor Inventory](#)
- [Product Cross Reference](#)
- [Documents & Drawings](#)
- [Product Compliance Support Center](#)
- [Site Map](#)

Customer Support

- [Email or Chat With Us](#)
- [Find a Phone Number](#)
- [Knowledge Base](#)
- [Manage Your Account](#)

Keep Me Informed

