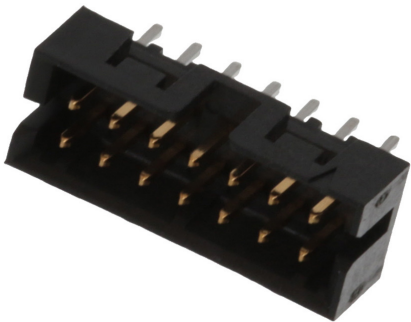




Part Number : [878311421](#)
Product Description : 2.00mm Pitch, Milli-Grid
PCB Header, Dual Row, Vertical, Through
Hole, Shrouded, 14 Circuits, 0.76µm Gold (Au)
Plating, with Center Polarization Slot, with
Locking Window, without PCB Locator, Tube
Series Number : 87831
Status : Active
Product Category : PCB Headers and
Receptacles



Documents & Resources

Drawings
[Drawing 878311421_sd.pdf](#)
[Packaging Design Drawing PK-87831-001-001.pdf](#)

3D Models and Design Files
[3D Model 878311421_stp.zip](#)
[3D Model PDF 878311421.pdf](#)

Specifications
[Application Specification 503940001-AS-000.pdf](#)
[Product Specification PS-87831-027-001.pdf](#)

Product Environment Compliance

Compliance

GADSL/IMDS	Not Relevant
China RoHS	
EU ELV	Not Relevant
Low-Halogen Status	Not Low-Halogen per IEC 61249-2-21
REACH SVHC	Not Contained per D(2023)3788-DC (14 Jun 2023)
EU RoHS	Compliant per EU 2015/863

Multiple Part Product Compliance Statements
- Eu RoHS
- REACH SVHC

- Low-Halogen

Multiple Part Industry Compliance Documents

- IPC 1752A Class C
- IPC 1752A Class D
- Molex Product Compliance Declaration
- IEC-62474
- chemSHERPA (xml)

EU RoHS Certificate of Compliance

Part Details

General

Status	Active
Category	PCB Headers and Receptacles
Series	87831
Description	2.00mm Pitch, Milli-Grid PCB Header, Dual Row, Vertical, Through Hole, Shrouded, 14 Circuits, 0.76µm Gold (Au) Plating, with Center Polarization Slot, with Locking Window, without PCB Locator, Tube
Application	Signal, Wire-to-Board
Comments	Contact Molex for application in automotive industry
Component Type	PCB Header
Product Family	Milli-Grid Connector System
Product Name	Milli-Grid
UPC	822348274093

Agency

CSA	LR19980
UL	E29179

Electrical

Current - Maximum per Contact	2.0A
Voltage - Maximum	125V

Physical

Breakaway	No
Circuits (Loaded)	14
Circuits (maximum)	14
Color - Resin	Black
Durability (mating cycles max)	100
First Mate / Last Break	No
Flammability	94V-0
Glow-Wire Capable	No
Guide to Mating Part	No
Keying to Mating Part	None
Lock to Mating Part	Yes
Material - Metal	Phosphor Bronze
Material - Plating Mating	Gold
Material - Plating Termination	Tin
Material - Resin	Nylon
Net Weight	0.705/g
Number of Rows	2
Orientation	Vertical
Packaging Type	Tube
PC Tail Length	2.50mm
PCB Locator	No
PCB Retention	None
PCB Thickness - Recommended	1.60mm
Pitch - Mating Interface	2.00mm
Pitch - Termination Interface	2.00mm
Plating min - Mating	0.762µm
Plating min - Termination	1.905µm
Polarized to PCB	No
Shrouded	Yes
Stackable	No
Temperature Range - Operating	-55° to +105°C
Termination Interface Style	Through Hole

Solder Process Data

Max-Duration	10
--------------	----

Lead-Free Process Capability	WAVE
Max-Cycle	1
Max-Temp	260

Mates With / Use With

Mates with Part(s)

Description	Part Number
Milli-Grid Dual Row Receptacle Housings	<u>51110</u>
Milli-Grid Vertical Through Hole PCB Receptacles	<u>78787</u>
Milli-Grid Top Entry Surface Mount PCB Receptacles	<u>78788</u>
Milli-Grid Vertical Through Hole PCB Receptacles	<u>79107</u>
Milli-Grid Vertical Through Hole PCB Receptacles	<u>79108</u>
Milli-Grid Top/Bottom Entry Surface Mount PCB Receptacles	<u>79109</u>
Milli-Grid Dual Row Cable-to-Board Receptacles	<u>87568</u>