

[Connectors](#) > [PCB Connectors](#) > [Wire-To-Board Connectors](#) > [Headers & Receptacles](#)

EP2.5 HDR 2P VERT W/O BOSS,TAPING,YELLOW



✓ ACTIVE

Economy Power 2.5

TE Part # **4-2299683-2**

TE Internal #: **4-2299683-2**

Connector Assembly Type : **PCB Mount Header**

PCB Mount Orientation : **Vertical**

Connector System : **Wire-to-Board**

Number of Positions : **2**

Centerline (Pitch) : **2.5 mm [.098 in]**

Add to List ▾

[Similar Products](#)



ORDER SAMPLES

Compatible Parts & Tooling

SHOP OUR DISTRIBUTORS (1)

North America ▾

Distributor	Phone Number	Buy
ARROW ELECTRONICS INC.	1-855-326-4757	Visit Site
14,250 in stock		

We are here to help!

Get in touch with our product experts.



CHAT WITH US



EMAIL US



CALL US

DOCUMENTS

FEATURES

PRODUCT COMPLIANCE

Product Drawings

EP2.5 HDR 2P VERT W/O BOSS,TAPING,YELLOW

[EP2.5 HDR 2P VERT W/O BOSS,TAPING,YELLOW](#)

English

CAD Files

3D PDF

[3D_CVM_CVM_4-2299683-2_A.pdf](#) 3D

Customer View Model

[ENG_CVM_CVM_4-2299683-2_A.2d_dxf.zip](#)

English

[ENG_CVM_CVM_4-2299683-2_A.3d_igs.zip](#)

English

[ENG_CVM_CVM_4-2299683-2_A.3d_stp.zip](#)

English

Product Specifications

Application Specification

[ENG_SS_114-13315_G.pdf](#) English

Product Specification

[ENG_SS_108-2418_H.pdf](#) English

Please review product documents or [contact us](#) for the latest agency approval information. Please Note: Use the Product Drawing for all design activity.

Product Type Features

Connector Assembly Type :

PCB Mount Header

Connector System : **Wire-to-Board**

Header Type : **Shrouded**

Sealable : **No**

Connector & Contact Terminates To :

Printed Circuit Board

Product Type : **Connector**

Connector Type : **Connector Assembly**

Glow Wire Rating : **Standard Part - Not Glow Wire**

Configuration Features

Selectively Loaded : **No**

PCB Mount Orientation : **Vertical**

Number of Positions : **2**

Number of Rows : **1**

Backwall/Post Interruptions :

Without

Electrical Characteristics

Operating Voltage (VAC): **250**

Contact Features

Contact Base Material : **Brass**

Contact Shape : **Round**

Contact Mating Area Plating Material :

Tin

Contact Mating Area Plating Material Finish :

Tin

Contact Mating Area Plating Thickness :

2.03 μm [80 μin]

Contact Type : **Pin**

Contact Current Rating (Max) (A):

4.2

Contact Style : **Straight**

PCB Contact Termination Area Plating Thickness :

2.032 μm [80 μin]

Contact Layout : **Inline**

Contact Transmits (Typical) :

Power, Signal (Data)

PCB Contact Termination Area Plating Material :

Tin

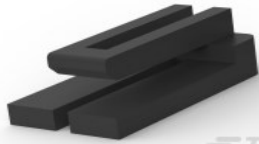
Contact Design : **Round Post**

Termination Features	Termination Method to PC Board : Through Hole - Solder Termination Method to Wire & Cable : Solder
Mechanical Attachment	PCB Mounting Style : Through Hole PCB Mount Alignment : Without Mating Retention : With PCB Mount Retention : Without Mating Alignment : With Mating Retention Type : Latch Mating Alignment Type : Polarization Contact Retention : Without
Housing Features	Centerline (Pitch) : 2.5 mm [.098 in] Housing Color : Yellow Housing Material : PBT
Dimensions	Height : 8.8 mm [.346 in] Tail Length : 3.4 mm [.134 in] Width : 6.4 mm [.252 in] PCB Thickness (Recommended) : 1.6 mm [.063 in] Length : 7.5 mm [.3 in] Mating Post Length : 3.6 mm [.142 in]
Usage Conditions	Operating Temperature Range : -55 – 105 °C [131 – 221 °F]
Operation/Application	Circuit Application : Power For Use With : Connector/Cable Assembly
Statement of Compliance	Statement of Compliance pdf



TE Part # 1969442-2
EP 2.5 TPA Housing,
2 Pos

[View Product](#)



TE Part # 1969443-2
EP 2.5 TPA Retainer,
2 Pos

[View Product](#)



TE Part # 2232983-1
EP 2.5 LIF RCPT
CONTACT, 2... AWG

[View Product](#)



TE Part # 1744423-1
EP 2.5 RCPT
CONTACT, 2... AWG

[View Product](#)

Also in the Series | Economy Power 2.5



PCB Latches, Locks & Retainers (36)



Wire-to-Board Connector Contacts (6)



Wire-to-Board Connector Housings (196)



Wire-to-Board Headers & Receptacles (272)

About TE Connectivity

For Partners

Customer Support

CALL US

LIVE CHAT

United States

Our Company

Events

TE News Center

Careers

Investors

Corporate Responsibility

Terms and Conditions of Sale

Distributors

Suppliers

Email or Call Us

Find Authorized Distributors

What's New on TE.com

Product FAQs

Select Country & Language

United States (EN)

Germany (DE)

China (中文)

Japan (日本語)

Find Your Country/Region ▾

[Terms of Use](#) | [Privacy](#) | [Cookie Policy](#) | [Accessibility](#) | [Site Map](#)



© 2018 TE Connectivity. All Rights Reserved.