
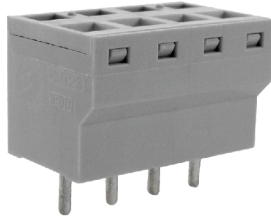


5.08mm & 10.16mm Pitch Screwless Top Entry Terminal Blocks

- 2-24 pole solid block
5.08mm pitch
- 1-10 pole solid block
10.16mm pitch
- Top entry for cable
and release point
- Moulded in grey UL94-V0 Flame
retardant PA
- 0.5-1.5mm² (30-16AWG)
solid & stranded cable
-  approved

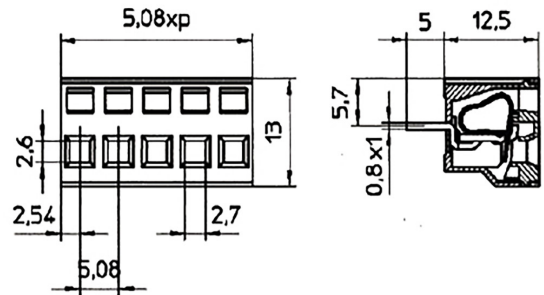
CSTBV23



SPECIFICATION	5.08mm	10.16mm
Rating	16A/320V UL=10A/300V VDE&IMQ=16A/450V	16A/630V UL=10A/300V VDE&IMQ=16A750V
Dielectric strength	≥ 2.5kV	≥ 3kV
Impulse withstand voltage	4kV	6kV
Working temperature	110°C	
Moulding	Grey UL 94 V0 flame retardant PA	
Pin/contact	Copper alloy, NI & SN	
Spring	INOX Steel	
Recommened PCB hole size	ø1.1mm	

5.08mm

TYPE NO.	POLES	LENGTH
CSTBV23/2	2	10.2mm
CSTBV23/3	3	15.2mm
CSTBV23/4	4	20.3mm
CSTBV23/5	5	25.4mm
CSTBV23/6	6	30.5mm
CSTBV23/7	7	35.6mm
CSTBV23/8	8	40.6mm
CSTBV23/9	9	45.7mm
CSTBV23/10	10	50.8mm
CSTBV23/11	11	55.9mm
CSTBV23/12	12	61mm
CSTBV23/13	13	66mm
CSTBV23/14	14	71.1mm
CSTBV23/15	15	76.2mm
CSTBV23/16	16	81.3mm
CSTBV23/17	17	86.4mm
CSTBV23/18	18	91.4mm
CSTBV23/19	19	96.5mm
CSTBV23/20	20	101.6mm
CSTBV23/21	21	106.7mm
CSTBV23/22	22	111.8mm
CSTBV23/23	23	121.9mm
CSTBV23/24	24	131.9mm



CAMDENBOSS

We operate a constant improvement
policy, our products are subject to
change without notice.

Ver 1.1

+44 (0)1638 716101
info@camdenboss.com
www.camdenboss.com



FM 28614 EMS 613558