

LZ1 LENSES FOR SEOUL SEMICONDUCTOR P4 LEDs




SEOUL SEMICONDUCTOR



- Specially designed for Seoul Semiconductor P4 series of LEDs.
- Special care taken to make a uniform white or warm white illumination. Lenses work well with other colors, too.
- Lens material optical grade PMMA. Allows use of high current and temperature conditions
- Best available optical efficiency, more than 90%, with an extremely good cutoff of light
- Fastening of holden to PCB with appropriate adhesive, e.c. epoxy or polyurethane based. NOTE: DO NOT USE SUPERGLUE.

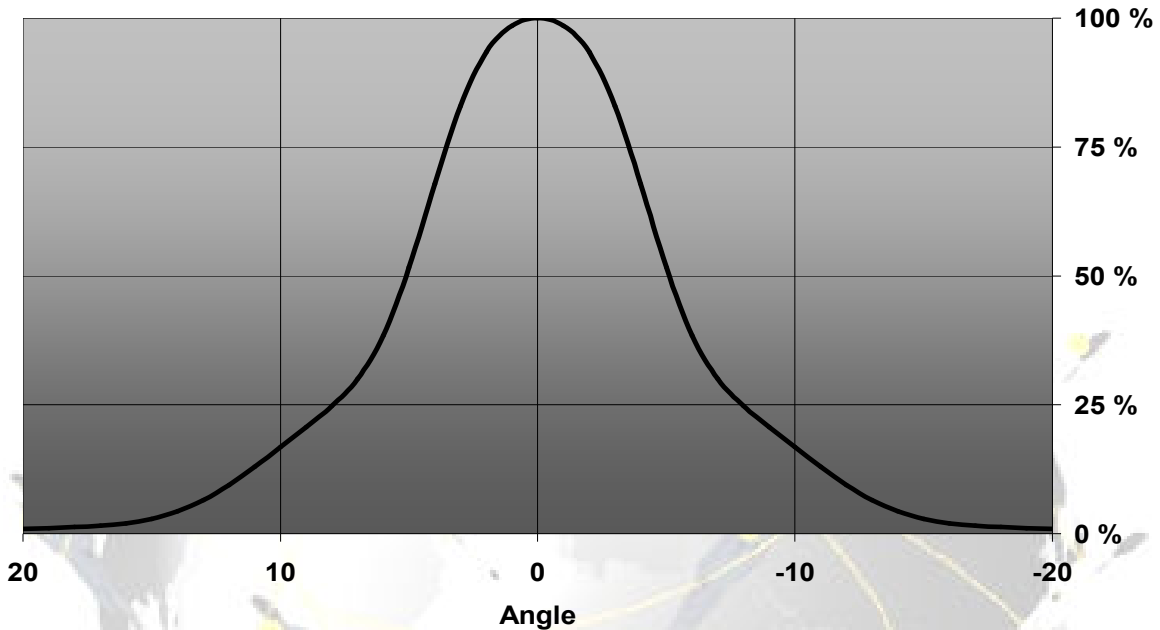
LENS TYPES

NAME	ORDERING CODE	FWHM Angle
LZ1 REAL SPOT	FA10788 LZ1-RS	±5
LZ1 DIFFUSER	FA10790 LZ1-D	X
LZ1 MEDIUM	FA10787 LZ1-M	±13
LZ1 OVAL	FA11102 LZ1-O-90	coming soon
LZ1 RECTANGULAR	FA10789 LZ1-Rec	±18 x ±12

© Ledil Oy – PRELIMINARY - Subject to change without prior notice

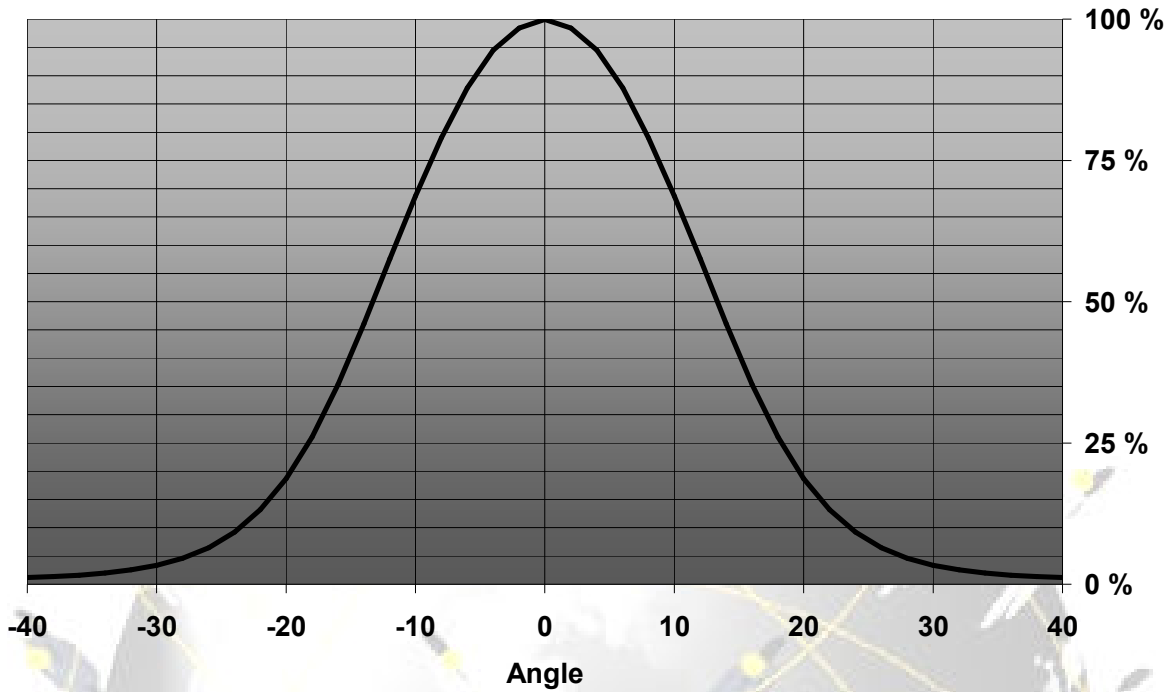
MEASUREMENT DATA

Relative Intensity of LZ1-RS (n. 10450)

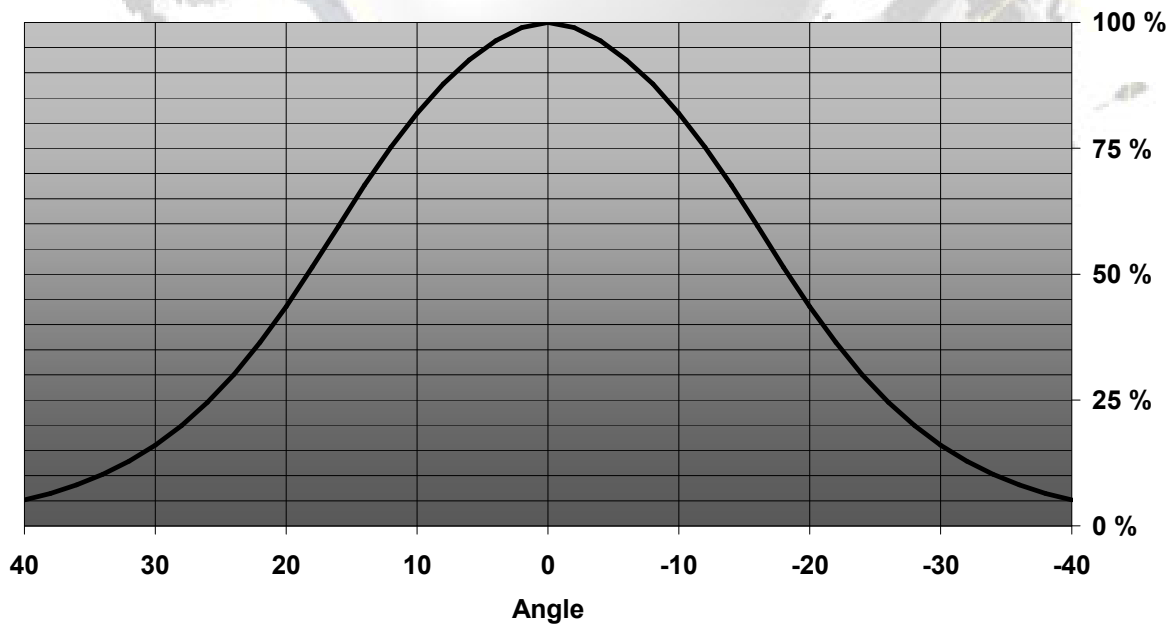


© Ledil Oy – PRELIMINARY - Subject to change without prior notice

Relative Intensity of LZ1_M

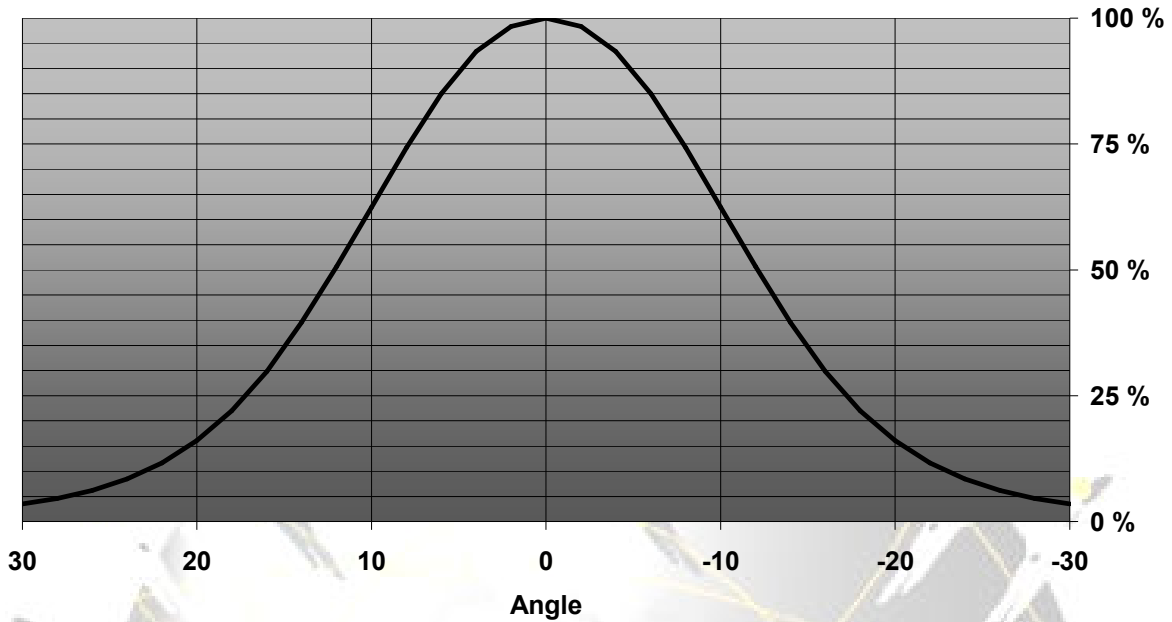


Relative Intensity of LZ1_REC (horizontal direction)



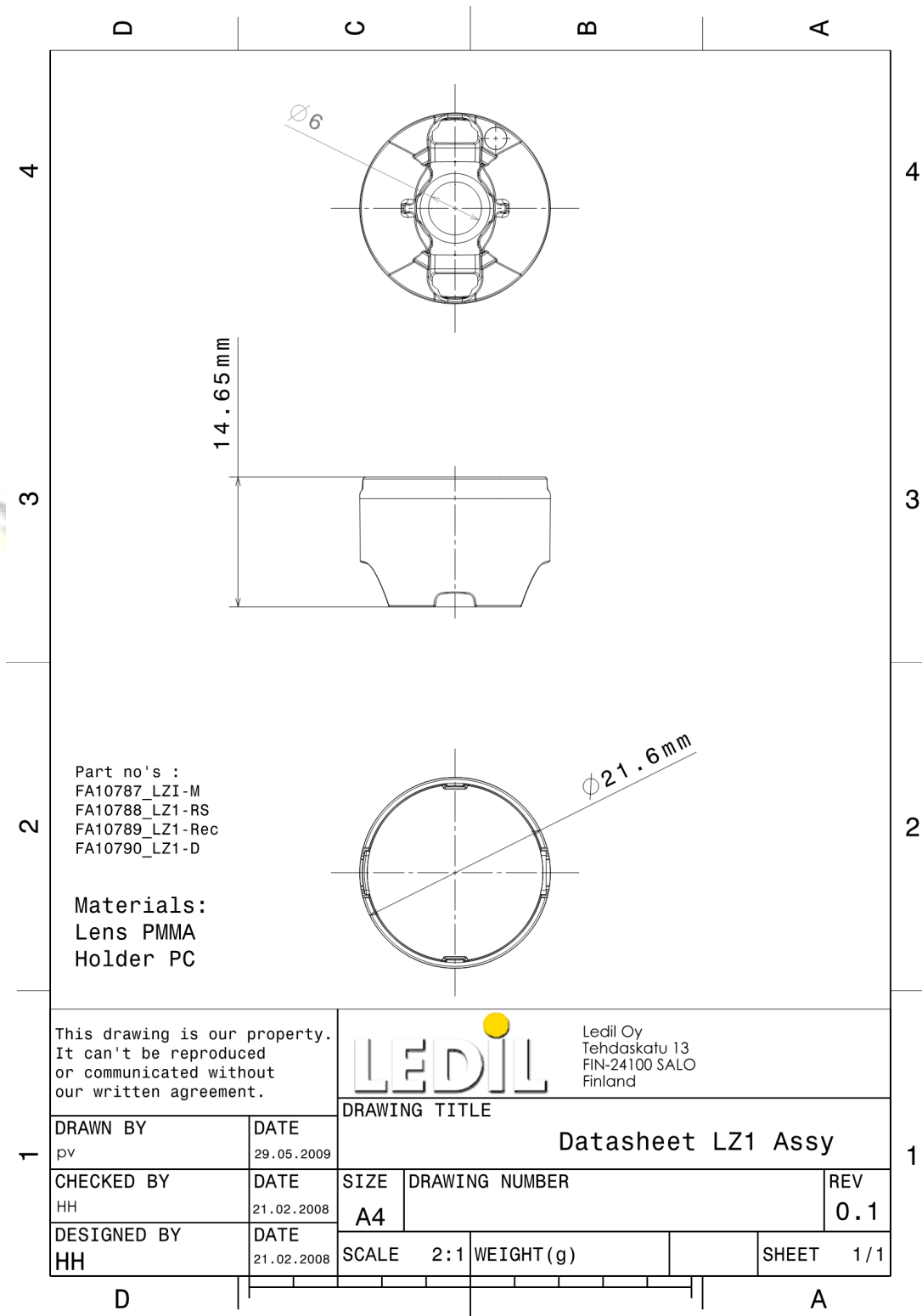
© Ledil Oy – PRELIMINARY - Subject to change without prior notice

Relative Intensity of LZ1_REC (vertical direction)



EULUMDAT & IES FILES AVAILABLE BY REQUEST

DRAWINGS



© Ledil Oy - PRELIMINARY - Subject to change without prior notice