

## Zyklop Hybrid Set, 2 pieces

### The Zyklop Hybrid Ratchet, 1/2"



<b>EAN:</b>	4013288184320	<b>Size:</b>	305x115x45 mm
<b>Part number:</b>	05004095001	<b>Weight:</b>	967 g
<b>Article number:</b>	Zyklop Hybrid Set	<b>Country of origin:</b>	CZ
		<b>Customs tariff number:</b>	82041100

- Zyklop Hybrid ratchet with long overall length (leverage effect) and slim ratchet head
- Fine-pitched with 72 teeth for a return angle of only 5°
- Extension with unlocking pin

Zyklop Hybrid ratchet set, 1/2" drive, metric. Including Zyklop Hybrid ratchet and Hybrid handle extension, extension and 10 sockets.

#### Web link

[http://products.wera.de/en/zyklop\\_ratchets\\_and\\_accessories\\_the\\_zyklop\\_ratchets\\_the\\_zyklop\\_ratchets\\_1\\_2\\_the\\_zyklop\\_hybrid\\_ratchet\\_1\\_2\\_zyklop\\_hybrid\\_set.html](http://products.wera.de/en/zyklop_ratchets_and_accessories_the_zyklop_ratchets_the_zyklop_ratchets_1_2_the_zyklop_hybrid_ratchet_1_2_zyklop_hybrid_set.html)

Wera - Zyklop Hybrid Set  
05004095001 - 4013288184320

Wera Werkzeuge GmbH  
Korzter Straße 21-25  
D-42349 Wuppertal  
Tel: +49 (0)2 02 / 40 45-0  
E-Mail: [info@wera.de](mailto:info@wera.de)

## Zyklop Hybrid Set, 2 pieces

### The Zyklop Hybrid Ratchet, 1/2"



#### Set contents:



**8006 C**  
05003780001 1 x 1/2"x281.0



**8797 C**  
05003781001 1 x 271.0

#### The Zyklop Hybrid Ratchet

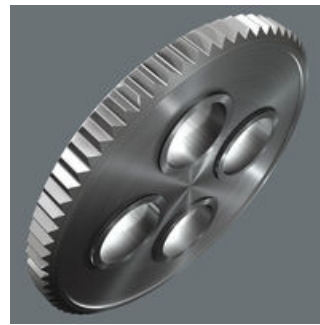


We wanted to integrate all the mostly-desired ratchet advantages in a single tool. Our idea was to develop a light ratchet with an ergonomic handle, slim design, long lever and an extension option. Since the term "hybrid" refers to a combination from various sectors, it was quite easy to decide on the name.



Combines robustness, slim design, and little weight.

#### Low return angle



The reversible ratchet with 72 fine-pitched teeth has a low return angle of only 5°. This short stroke allows fast and precise work in all types of installation.

#### Ball lock



The ball lock holds the sockets and attachments securely, ensuring safe working. A changeover into any predefined position is completed by simply pressing the release button – this is even the case in the 90° position.

#### Kraftform



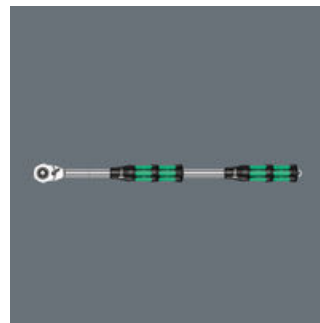
Multi-component Kraftform handle for optimum pressure and tensile loads.

#### Higher torque transfer



Larger overall length for higher torque transfer.

#### Hybrid extension



Even more torque can be applied by using the extension.

#### Ideal for working in confined spaces



Very slim ratchet head.

#### Web link

[http://products.wera.de/en/zyklop\\_ratchets\\_and\\_accessories\\_the\\_zyklop\\_ratchets\\_the\\_zyklop\\_ratchets\\_1\\_2\\_the\\_zyklop\\_hybrid\\_ratchet\\_1\\_2\\_zyklop\\_hybrid\\_set.html](http://products.wera.de/en/zyklop_ratchets_and_accessories_the_zyklop_ratchets_the_zyklop_ratchets_1_2_the_zyklop_hybrid_ratchet_1_2_zyklop_hybrid_set.html)

Wera - Zyklop Hybrid Set  
05004095001 - 4013288184320

Wera Werkzeuge GmbH  
Korzter Straße 21-25  
D-42349 Wuppertal  
Tel: +49 (0)2 02 / 40 45-0  
E-Mail: [info@wera.de](mailto:info@wera.de)