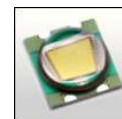


## Lily-SST90 reflector for Luminus SST90 LEDs



LUMINUS  
www.luminus.com

- Specially designed for Luminus SST-90 series of LEDs.
- Special care taken to make a uniform white or warm white illumination. Lenses work well with other colors, too.
- Lens material optical grade metallized PC. Allows use of high current and temperature conditions (130°C / 266°)
- Best available optical efficiency over 90%.
- Compact dimensions, D=22.6mm & H=13.6mm

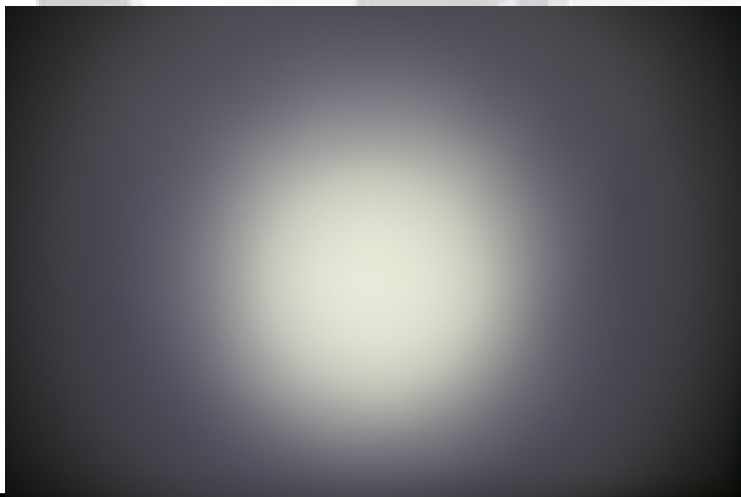
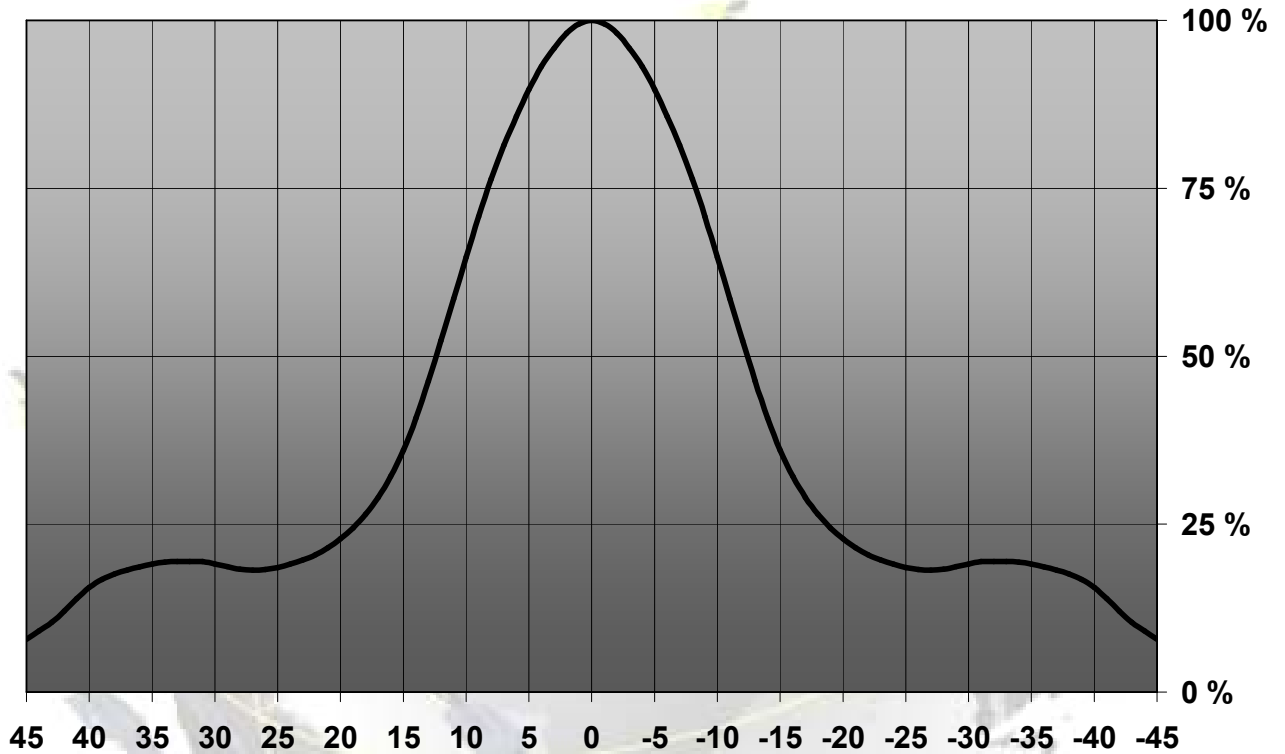
### LENS TYPES

NAME	ORDERING CODE	FWHM Angle
Lily-SST90 Spot	C10977_Lily-SST90-S	±12°
Lily-SST90 Medium	C10978_Lily-SST90-M	±13°
Lily-SST90 Wide	C10979_Lily-SST90-W	±28°

© Ledil Oy – PRELIMINARY - Subject to change without prior notice

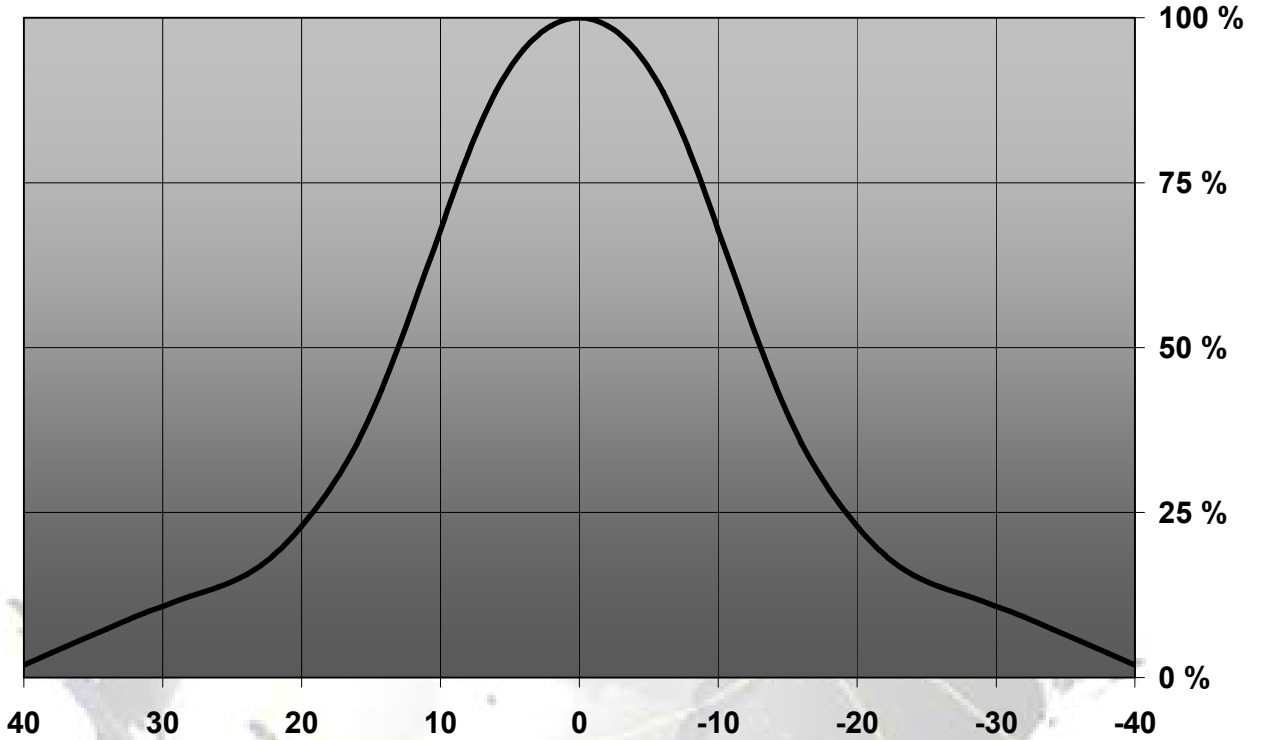
## MEASUREMENT DATA

Relative Intensity of C10977\_Lily-SST90-S



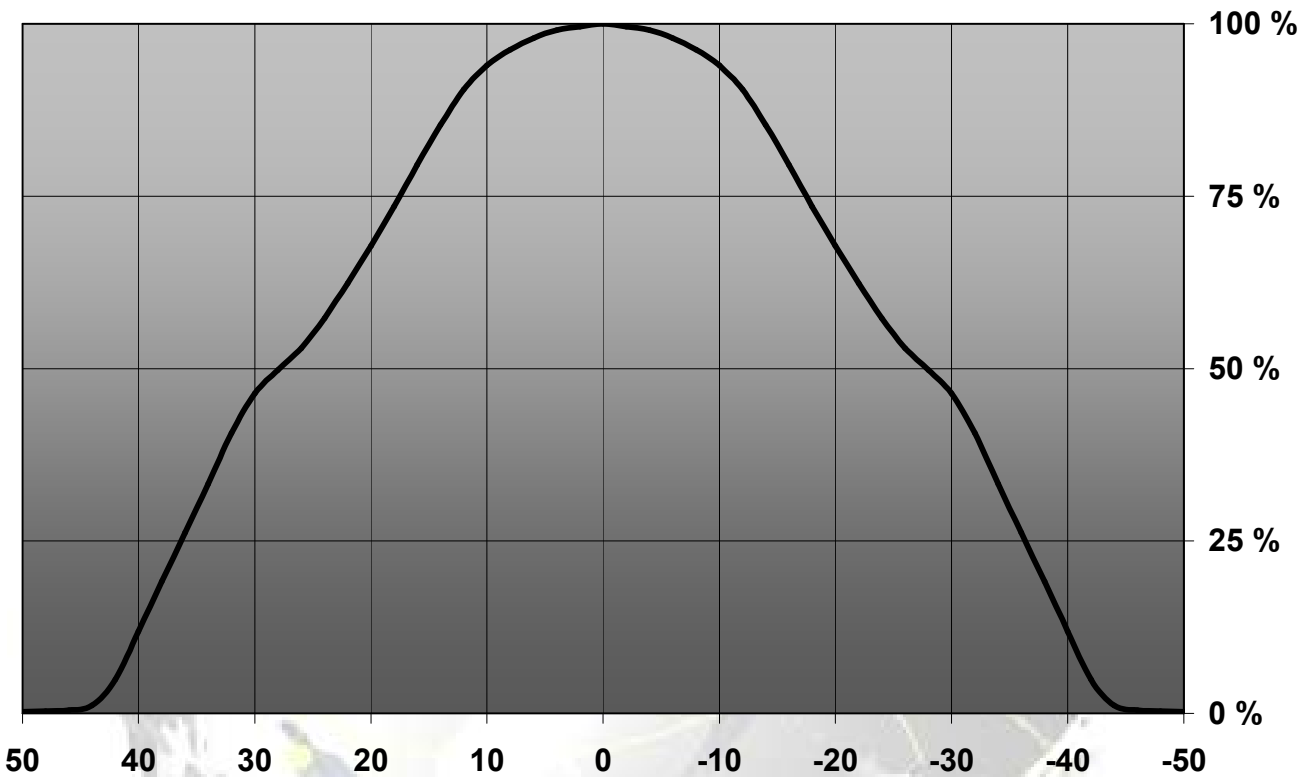
© Ledil Oy – PRELIMINARY - Subject to change without prior notice

Relative Intensity of C10978\_Lily-SST90-M



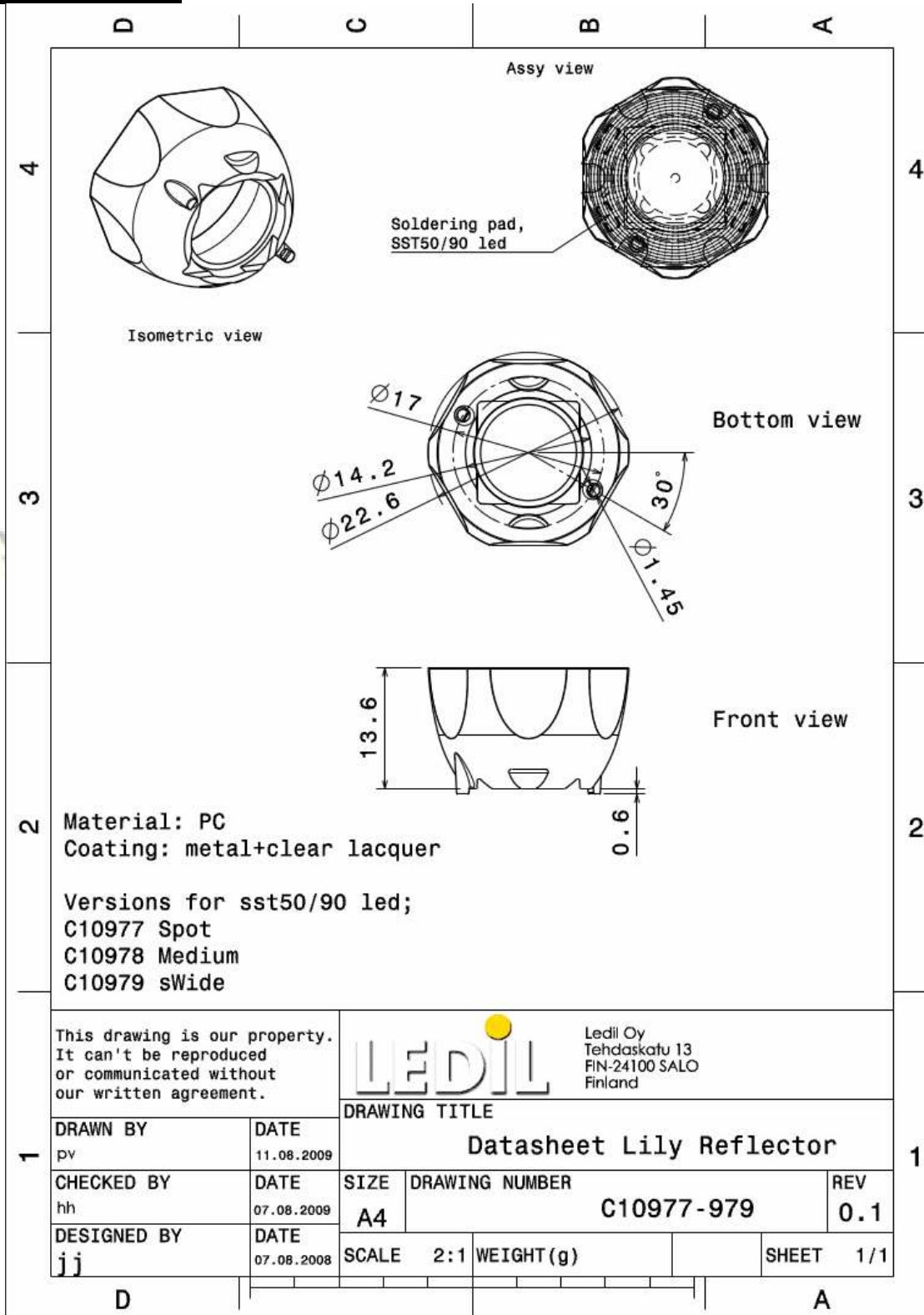
© Ledil Oy – PRELIMINARY - Subject to change without prior notice

Relative Intensity of C10979\_Lily-SST90-W



© Ledil Oy – PRELIMINARY - Subject to change without prior notice

## DRAWINGS



© Ledi Oy - PRELIMINARY - Subject to change without prior notice