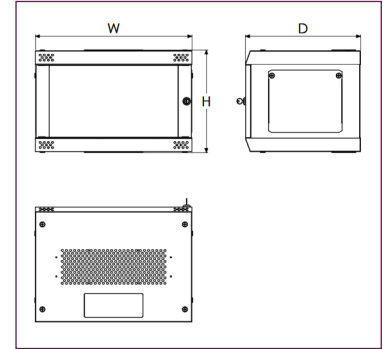


CamRack-QX

Product overview

19" wall mounted cabinets, designed for cabling, telecommunications, IT, industrial and home installations.

- Delivered flat packed for ease of access to all installations. Also reduces associated logistic costs and offers greater protection during transit
- Fast and efficient 3 minute assembly without tools
- 2x 19" mounting profiles. Variable depth, in 20mm increments
- Fast fixings 1/4 turn locks
- Quick release door. Tempered safety glass
- Easily removable side panels with 2x 1/4 turn locks
- Easily drilled plastic blanking covers for cable entry
- Template for wall mounting, included
- Maximum recommended load capacity: 45kg
- Finishes: Epoxy paint, RAL 7016
- Flat packed - assembled in 3 minutes!



RED	BLUE	ORANGE	WHITE	BLACK	U	WIDTH	DEPTH	HEIGHT
CQX064211	CQX064212	CQX064213	CQX064214	CQX064215	6U	578mm	421mm	376mm
CQX094211	CQX094212	CQX094213	CQX094214	CQX094215	9U	578mm	421mm	509mm
CQX125211	CQX125212	CQX125213	CQX125214	CQX125215	12U	578mm	521mm	643mm
CQX155211	CQX155212	CQX155213	CQX155214	CQX155215	15U	578mm	521mm	776mm

KEY FEATURES

Quick release door | Fast and efficient | Supplied flat-pack

Standard corner colours:



White



Red



Blue



Orange



Black

Other corner colours available upon request:



Yellow



Green



Purple



Lilac



Grey

ACCESSORIES

19" profiles

- Extra pair of 19" mount profiles
- Manufactured in steel
- Powder coated anthracite RAL 7016

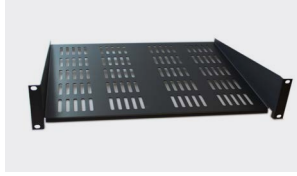


PART NO.	U	DESCRIPTION
CQX010006	6U	CamRack-QX 6U profiles (pair)
CQX010009	9U	CamRack-QX 9U profiles (pair)
CQX010012	12U	CamRack-QX 12U profiles (pair)
CQX010015	15U	CamRack-QX 15U profiles (pair)

ACCESSORIES

Cantilever tray

- Manufactured from 1.5mm steel
- 19" assembly with four anchoring points on the front sections
- Recommended maximum static load: 10/20 Kg
- Standard ventilation slots
- Front fastening height 2U
- One tray with mounting hardware
- Standard depths 180, 280, 350, 400mm
- Grey graphite epoxy paint, anthracite - RAL 7016
- One tray (screws not included)



PART NO.	U	DEPTH
CAX2TY180	2U	180mm
CAX2TY280	2U	280mm
CAX2TY350	2U	350mm
CAX2TY400	2U	400mm

Cantilever telescopic tray

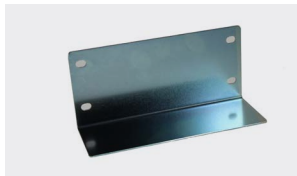
- Ideal for holding keyboards
- Manufactured from 1.5mm steel
- 19" assembly with four anchoring points on the front sections
- Recommended maximum static load- 10kg
- Standard ventilation slots
- Front fastening height 2U
- Standard depths 280mm
- Grey graphite epoxy paint, anthracite - RAL 7016
- Telescopic guide rails nickel plated
- One tray, one pair telescopic guides, one front handle



PART NO.	U	DEPTH
CAXCTT280	2U	280mm

Front guides mounting

- 19" support guides, used as additional support for 19" equipment
- Attached to rack by two anchoring points with M6 bolts
- Manufactured from 2mm zintec
- Zintec plated coating
- One pair of guides and assembly hardware



PART NO.	DESCRIPTION
CAXFMG001	Front guide mounting

Attachment set

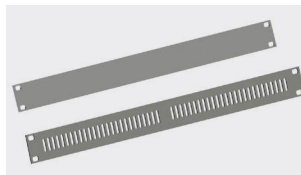
- M6x15mm screw, PA washer, M6 caged nut



PART NO.	DESCRIPTION
CAX000001	Attachment set (pack of 4)

19" silver front panel

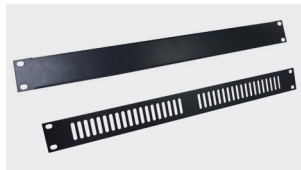
- Manufactured from 3mm aluminium, clear anodised
- Vented and solid profiles



STANDARD FRONT	VENTED FRONT	U	HEIGHT (MM)
CAX19SPS1	CAX19VPS1	1U	43.6mm
CAX19SPS2	CAX19VPS2	2U	88.1mm
CAX19SPS3	CAX19VPS3	3U	132.5mm
CAX19SPS4	CAX19VPS4	4U	177.0mm
CAX19SPS5	CAX19VPS5	5U	221.5mm
CAX19SPS6	CAX19VPS6	6U	265.9mm
CAX19SPS9	CAX19VPS9	9U	399.2mm

19" panel anthracite

- Manufactured from steel
- Powder coated (RAL 7016)
- Vented and solid panels



STANDARD FRONT	VENTED FRONT	U	HEIGHT (MM)
CAX19SPA1	CAX19VPA1	1U	43.6mm
CAX19SPA2	CAX19VPA2	2U	88.1mm
CAX19SPA3	CAX19VPA3	3U	132.5mm
CAX19SPA4	CAX19VPA4	4U	177.0mm
CAX19SPA5	CAX19VPA5	5U	221.5mm
CAX19SPA6	CAX19VPA6	6U	265.9mm
CAX19SPA9	CAX19VPA9	9U	399.2mm