

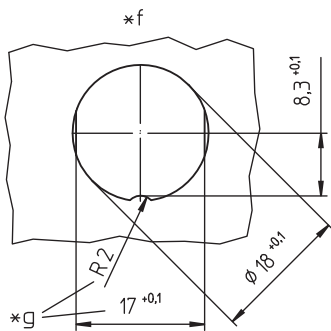
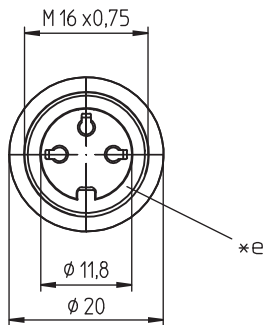
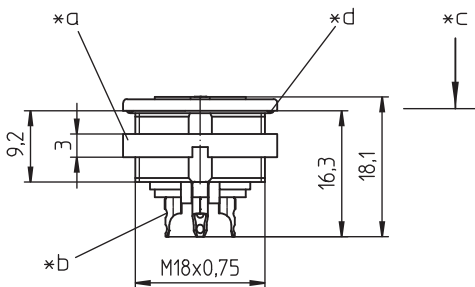
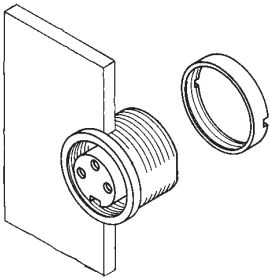
03 0304

Circular connectors with threaded joint M16 acc. to IEC 61076-2-106, IP40/IP67/IP68



Chassis socket acc. to IEC 61076-2-106, IP68, with threaded joint and solder terminals, for front mounting

03 0304



### Environmental conditions

Temperature range -40 °C/+85 °C

### Materials

Insulating body	PA GF, V-0 according to UL94
Contact bush	CuZn, silver-plated and flash gold-plated (3-8 poles) CuZn, pre-nickel and gold-plated (12-14 poles)
Housing	Zn diecast, pre-copper and nickel-plated
Ring screw	CuZn, nickel-plated
Seal	CR (flat), NBR (O-ring)

### Mechanical data

Insertion force/contact	$\leq 5.0 \text{ N}^1$
Withdrawal force/contact	$\geq 1.2 \text{ N}$ (3-8 poles) $\geq 0.9 \text{ N}$ (12-14 poles) <sup>1</sup>
Tightening torque connector	1-3 Nm
Tightening torque nut	1-3 Nm
Protection class	IP68 <sup>2</sup>

<sup>1</sup> measured with a polished steel pin, nominal thickness 1.5 mm (1.0 mm with 12-14 poles)

<sup>2</sup> according to IEC DIN EN 60529, only in locked condition with an appropriate counterpart; IPX8 requirements under agreement between manufacturer and user

### Connectable conductors for solder area

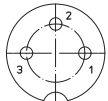
Section	$\leq 0.75 \text{ mm}^2$ (AWG 20) (3-8 poles) $\leq 0.25 \text{ mm}^2$ (AWG 24) (12-14 poles)
---------	--

### Electrical data (at $T_{\text{amb}} 20 \text{ }^\circ\text{C}$ )

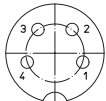
Contact resistance	$\leq 5 \text{ m}\Omega$
Rated current	5 A ( $T_{\text{amb}} 40 \text{ }^\circ\text{C}$ , 3-8 poles) 3 A ( $T_{\text{amb}} 40 \text{ }^\circ\text{C}$ , 12-14 poles)
Rated voltage	with pollution degree 1: 300 V (versions 03, 04, 05-1, 06, 07) 100 V (versions 05, 07-1, 08, 08-1) 160 V (versions 12, 14) with pollution degree 2: 250 V (versions 03, 04) 32 V (versions 05, 07-1, 08, 08-1) 160 V (versions 05-1, 06, 07, 12, 14)
Rated impulse voltage	1500 V (versions 03, 04, 05-1, 06, 07, 12, 14) 500 V (versions 05, 07-1, 08, 08-1)
Material group	II (IEC)/1 (UL) (400 $\leq$ CTI < 600)
Overvoltage category	I
Insulation resistance	> 100 M $\Omega$

**03 0304**

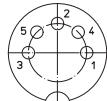
**Pin configurations, solder side view**



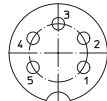
**03-a**  
**0304 03**



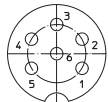
**04-a**  
**0304 04**



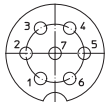
**05-b**  
**0304 05**



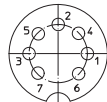
**05-a**  
**0304 05-1**



**06-a**  
**0304 06**



**07-a**  
**0304 07**



**07-b**  
**0304 07-1**



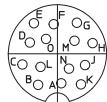
**0304 08**



**08-a**  
**0304 08-1**









**12-a**  
**0304 12**










**14-a**  
**0304 14**

**Associated products**

Counterparts

 0331	 0332	 0332-1
 033200	 0365	 036500

Accessories

 0322 C 16	 0381	 038199
 0382	 0384	 0385
 038799		

- \*a nut enclosed separately
- \*b cup-shaped solder terminal
- \*c mounting direction
- \*d O-ring gasket
- \*e flat gasket
- \*f port in mounting plate
- \*g anti-rotation, alternative execution

03 0304

Designation	Pole Number	PU (Pieces)	MDQ (Pieces)
0304 03	3	50	100
0304 04	4	50	100
0304 05	5	50	100
0304 05-1	5	50	100
0304 06	6	50	100
0304 07	7	50	100
0304 07-1	7	50	100
0304 08	8	50	100
0304 08-1	8	50	100
0304 12	12	50	100
0304 14	14	50	100

**Packaging:**  
in a cardboard box