

## Flush-type connector - SACC-DSIV-MS-4CON-L180SCOTHRSH - 1439984


Please be informed that the data shown in this PDF Document is generated from our Online Catalog. Please find the complete data in the user's documentation. Our General Terms of Use for Downloads are valid (<http://phoenixcontact.com/download>)



Sensor/actuator flush-type connector, connector, 4-pos., M12 SPEEDCON, shielded, A-coded, rear/screw mounting with M12 thread, with straight THR solder connection



### Key Commercial Data

Packing unit	1 pc
Minimum order quantity	60 pc
GTIN	 4 046356 476669
GTIN	4046356476669
Weight per Piece (excluding packing)	8.300 g
Custom tariff number	85366990
Country of origin	Germany

### Technical data

#### Ambient conditions

Ambient temperature (operation)	-25 °C ... 85 °C (Plug / socket)
Degree of protection	IP67

#### General

Rated current at 40°C	4 A
Rated voltage	250 V
Number of positions	4
Insulation resistance	≥ 100 MΩ
Coding	A - standard
Status display	No
Overvoltage category	II

## Flush-type connector - SACC-DSIV-MS-4CON-L180SCOTHRSH - 1439984

### Technical data

#### General

Degree of pollution	3
Connection method	THR solder connection
Mounting type	Rear mounting M12 x 1 With flat nut

#### Material

Flammability rating according to UL 94	V0
Contact material	CuZn
Contact surface material	Au
Contact carrier material	PPA
Material, knurls	Zinc die-cast, nickel-plated
Sealing material	FKM / EPDM

#### Standards and Regulations

Flammability rating according to UL 94	V0
--	----

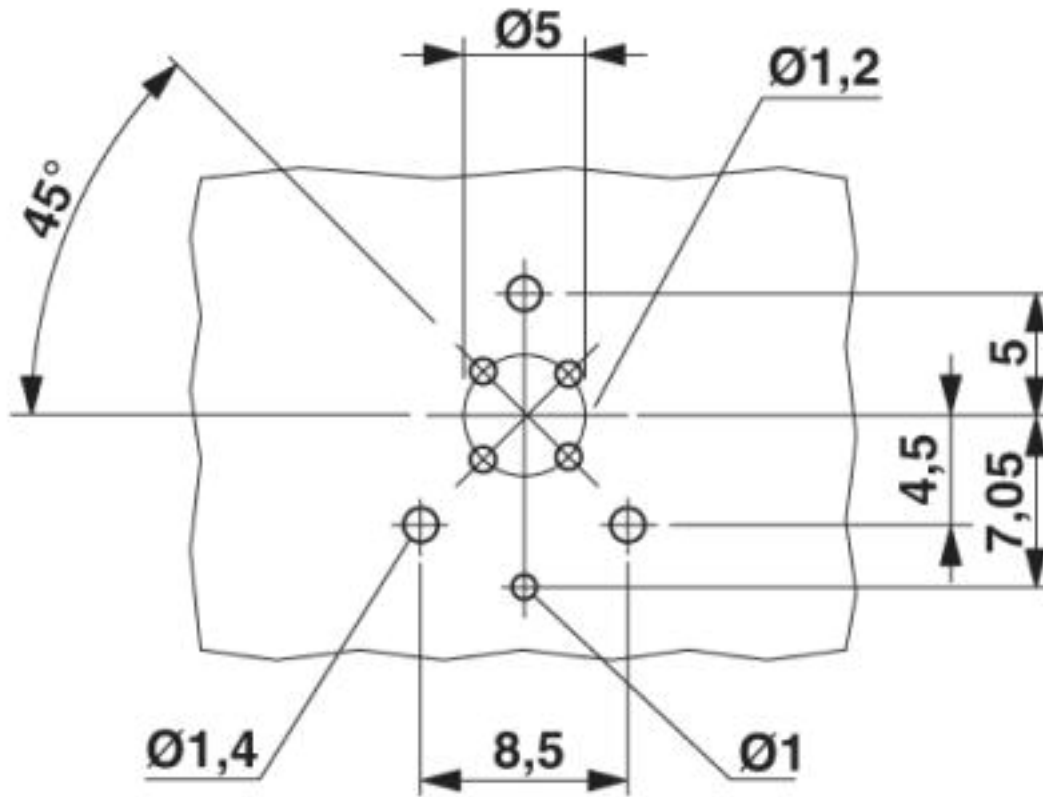
#### Environmental Product Compliance

	Lead 7439-92-1
China RoHS	Environmentally Friendly Use Period = 50
	For details about hazardous substances go to tab "Downloads", Category "Manufacturer's declaration"

### Drawings

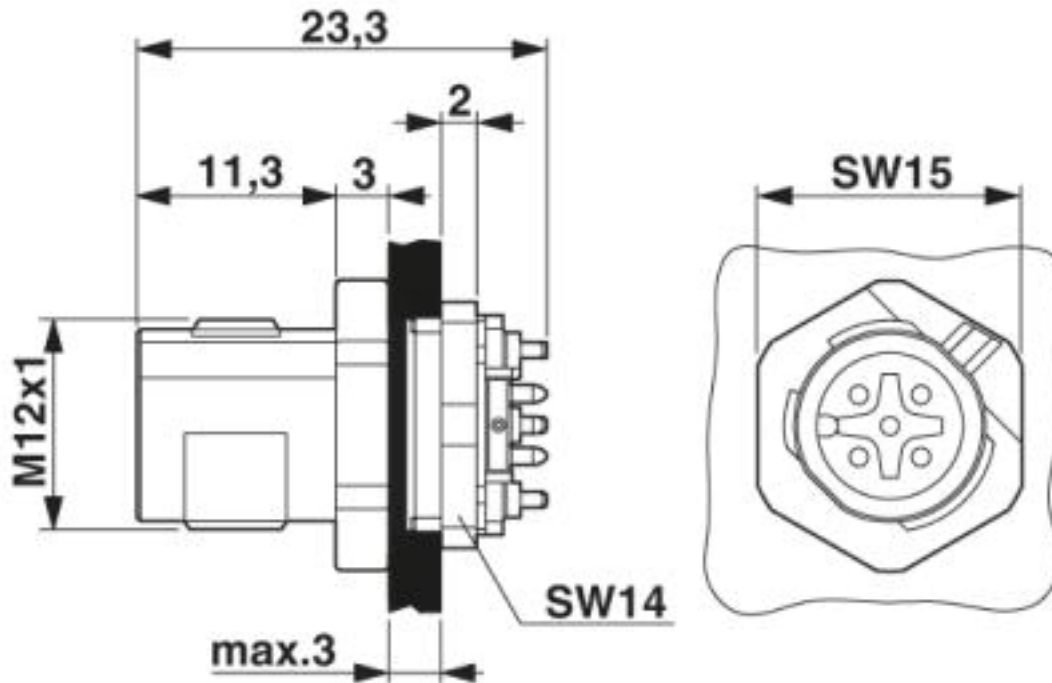
## Flush-type connector - SACC-DSIV-MS-4CON-L180SCOTHRSH - 1439984

Drilling diagram



## Flush-type connector - SACC-DSIV-MS-4CON-L180SCOTHRSH - 1439984

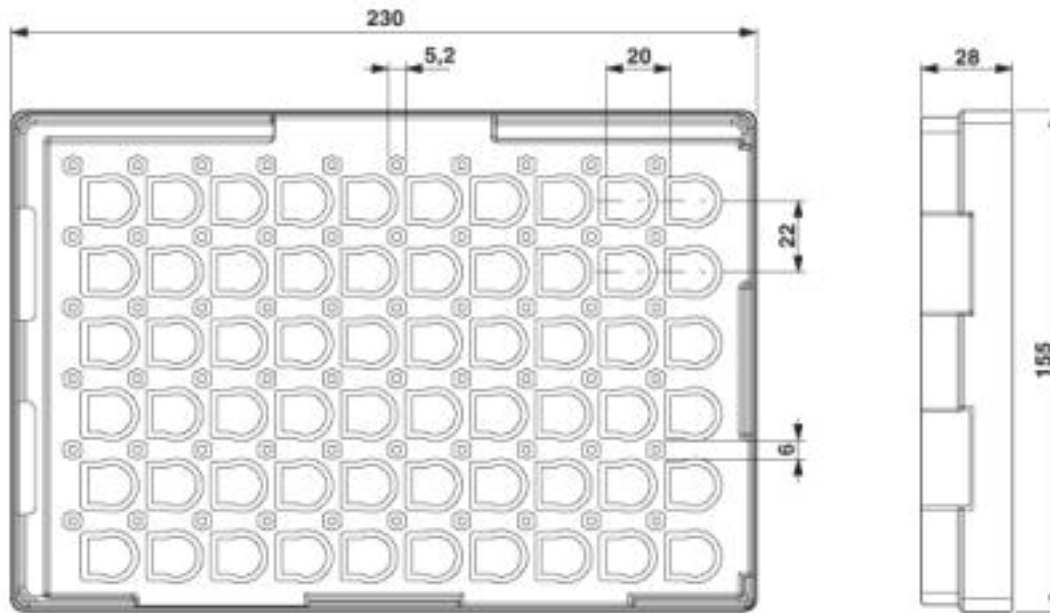
Dimensional drawing



M12 flush-type connector

## Flush-type connector - SACC-DSIV-MS-4CON-L180SCOTHRSH - 1439984

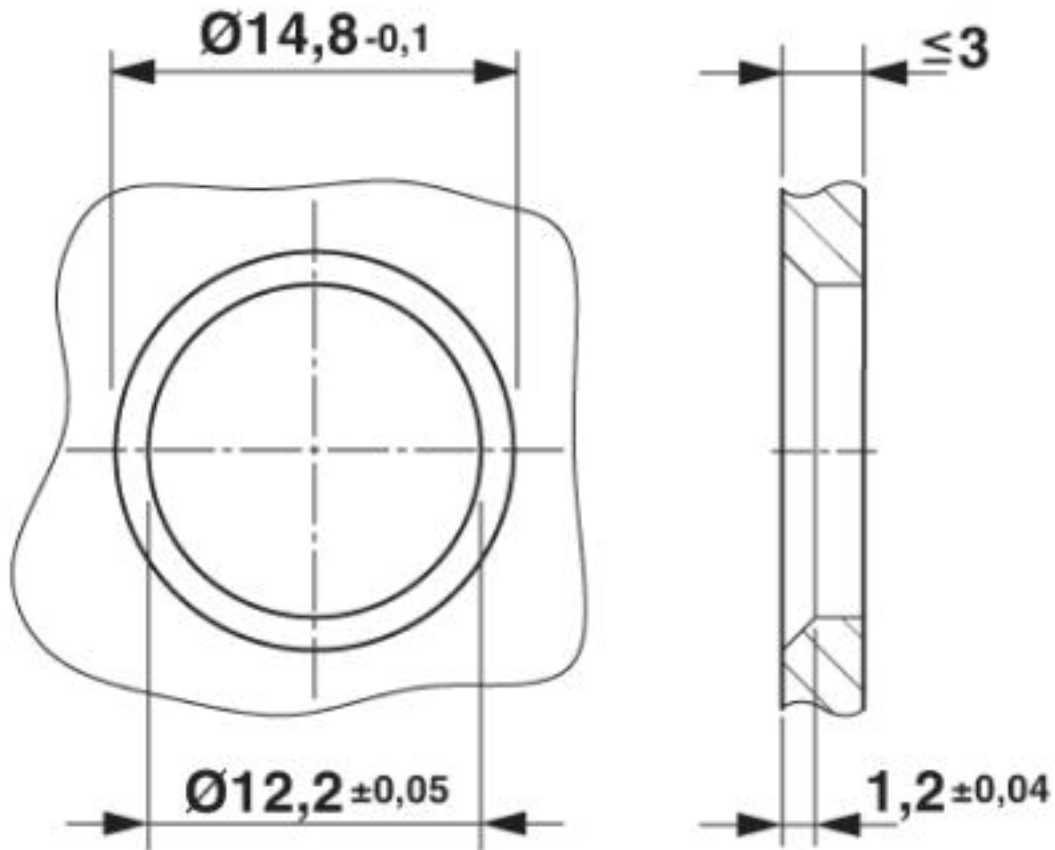
Dimensional drawing



THR tray packaging

## Flush-type connector - SACC-DSIV-MS-4CON-L180SCOTHRSH - 1439984

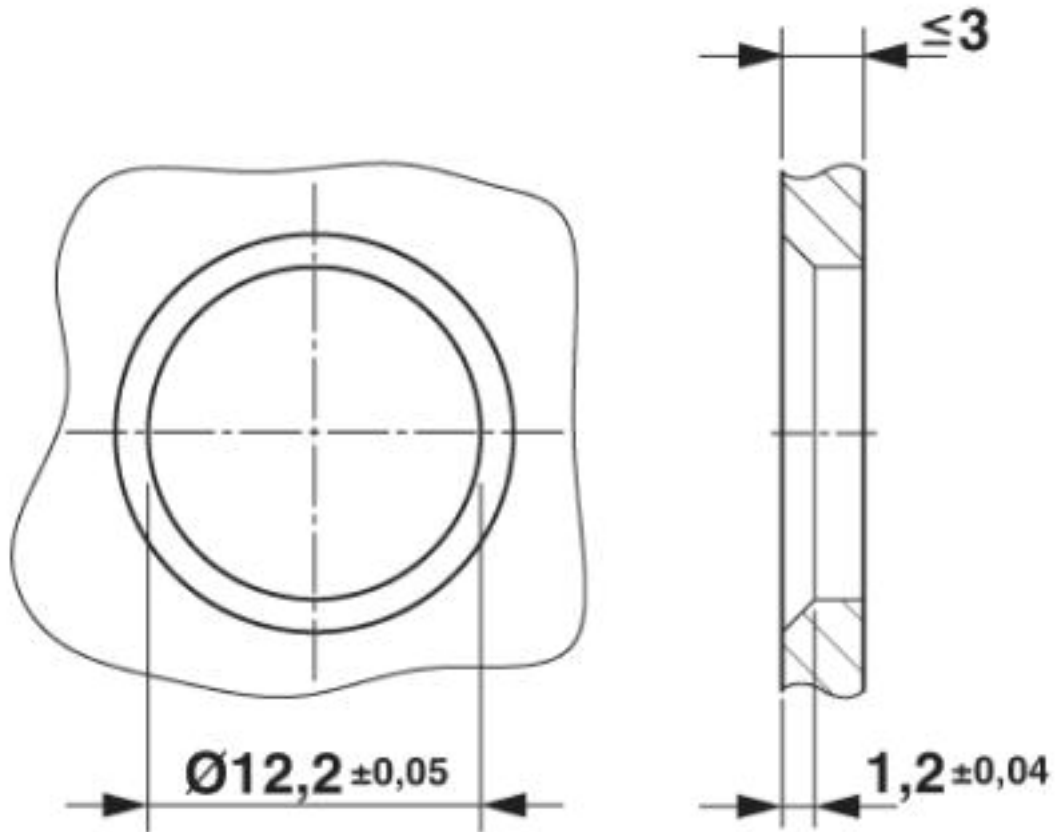
Dimensional drawing



Housing cut-out for two-part M12 flush-type connectors with THR and wave soldering connection, version 1

## Flush-type connector - SACC-DSIV-MS-4CON-L180SCOTHRSH - 1439984

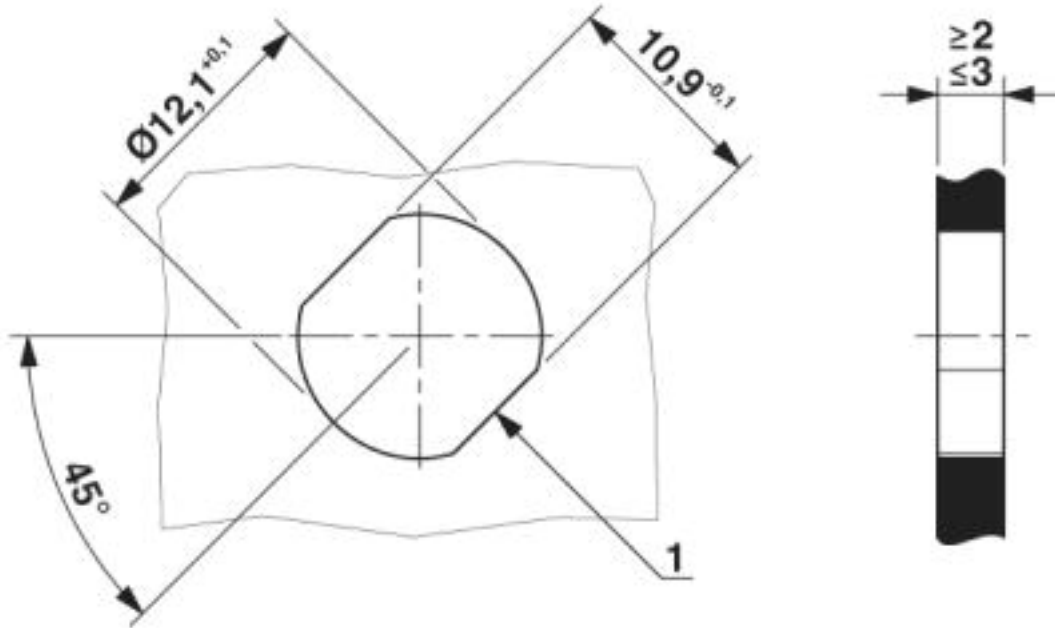
Dimensional drawing



Housing cut-out for two-part M12 flush-type connectors with THR and wave soldering connection, version 2

## Flush-type connector - SACC-DSIV-MS-4CON-L180SCOTHRSH - 1439984

Dimensional drawing

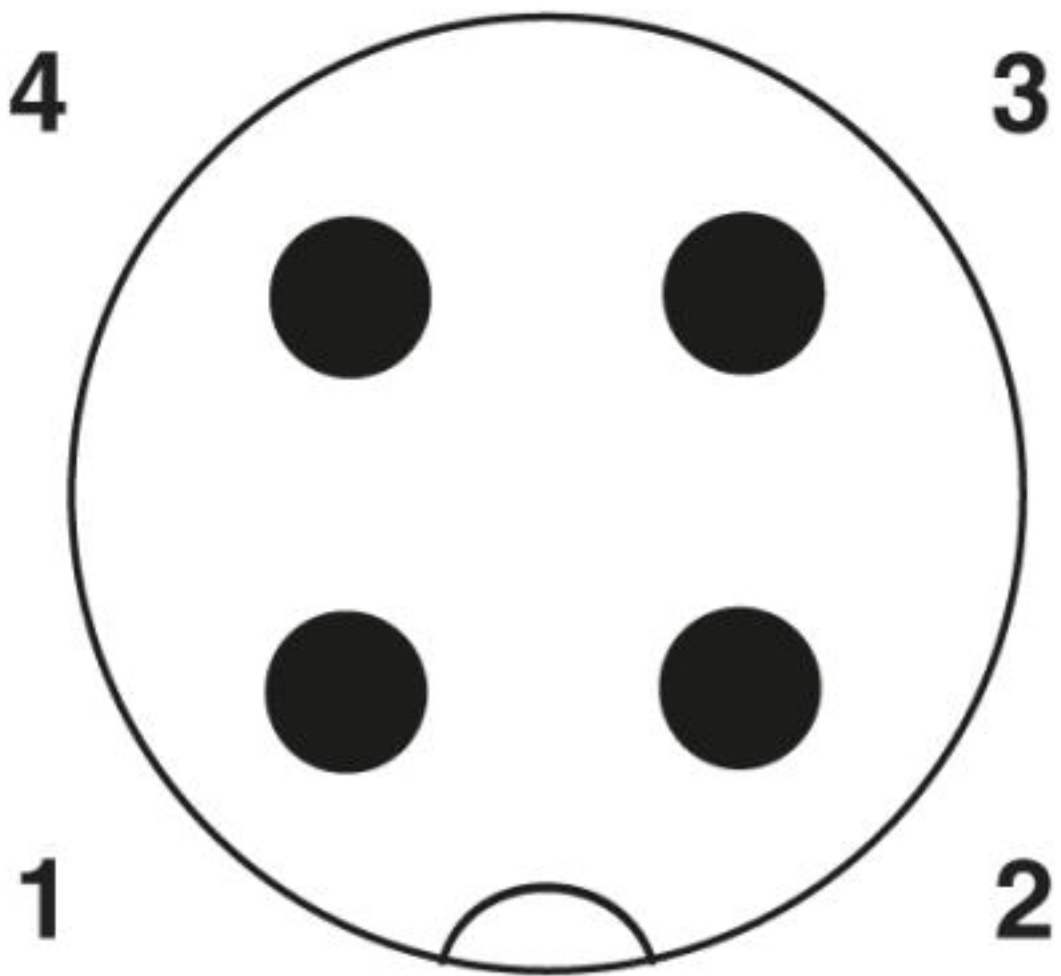


Housing cutout for M12 fastening thread, mounting panel with feed-through hole (alternative with surface as protection against rotation)



Flush-type connector - SACC-DSIV-MS-4CON-L180SCOTHRSH - 1439984

Schematic diagram



Pin assignment M12 plug, 4-pos., A-coded, view plug side

Classifications

eCl@ss

eCl@ss 10.0.1	27440102
eCl@ss 4.0	27140800
eCl@ss 4.1	27140800
eCl@ss 5.0	27143400
eCl@ss 5.1	27143400
eCl@ss 6.0	27279200
eCl@ss 7.0	27440103

## Flush-type connector - SACC-DSIV-MS-4CON-L180SCOTHRSH - 1439984

### Classifications

#### eCl@ss

eCl@ss 8.0	27440103
eCl@ss 9.0	27440102

#### ETIM

ETIM 3.0	EC002061
ETIM 4.0	EC002061
ETIM 5.0	EC002061
ETIM 6.0	EC002061

#### UNSPSC

UNSPSC 6.01	31251501
UNSPSC 7.0901	31251501
UNSPSC 11	31251501
UNSPSC 12.01	31251501
UNSPSC 13.2	39121413

### Approvals


#### Approvals

#### Approvals

#### EAC

#### Ex Approvals

### Approval details

EAC		B.01742
-----	---	---------