

## Distributed I/O device - FLM DI 8 M12 - 2736288

Please be informed that the data shown in this PDF Document is generated from our Online Catalog. Please find the complete data in the user's documentation. Our General Terms of Use for Downloads are valid (<http://phoenixcontact.com/download>)



The local bus device has digital inputs. Functions: 8 digital inputs, 3 ms filter time, 500 kbaud/2 Mbaud selection, channel-specific diagnostics, short-circuit and overload protection, 600 mA nominal current, M12 fast connection technology.

### Product Features

- Flexible power supply concept
- SPEEDCON fast locking system
- Short-circuit and overload protection
- Diagnostic and status indicators
- Consistent connection via M12 connectors



### Key Commercial Data

Packing unit	1 pc
Weight per Piece (excluding packing)	347.8 g
Custom tariff number	85176200
Country of origin	Germany

### Technical data

#### Note

Utilization restriction	EMC: class A product, see manufacturer's declaration in the download area
-------------------------	---

#### Environmental Product Compliance

REACH SVHC	DEHP 117-81-7
------------	---------------

#### Dimensions

Width	70 mm
Height	178.5 mm
Depth	50 mm
Drill hole spacing	168 mm

## Distributed I/O device - FLM DI 8 M12 - 2736288

### Technical data

#### Ambient conditions

Ambient temperature (operation)	-25 °C ... 60 °C
Ambient temperature (storage/transport)	-25 °C ... 85 °C
Permissible humidity (storage/transport)	95 %
Air pressure (operation)	80 kPa ... 106 kPa (up to 2000 m above sea level)
Air pressure (storage/transport)	70 kPa ... 106 kPa (up to 3000 m above sea level)
Degree of protection	IP65/IP67

#### General

Mounting type	Wall mounting
Net weight	290 g

#### Interfaces

Designation	Fieldline local bus
Connection method	M12 connector, B-coded
Designation connection point	Copper cable
Transmission speed	500 kBit/s / 2 MBit/s
Number of positions	5

#### Power supply for module electronics

Connection method	M12 connector
Designation	$U_L$
Supply voltage	24 V DC
Supply voltage range	18 V DC ... 30 V DC (including ripple)

#### Fieldline potentials

Voltage supply $U_L$	24 V DC
Power supply at $U_L$	max. 4 A
Current consumption from $U_L$	max. 50 mA (At 2 Mbaud)
	typ. 40 mA (At 2 Mbaud)
	max. 50 mA (At 500 kBaud)
	typ. 35 mA (At 500 kBaud)
Voltage supply $U_S$	24 V DC
Power supply at $U_S$	max. 4 A
Current consumption from $U_S$	typ. 5 mA (plus power supply for sensors)
	max. 600 mA

#### Digital inputs

Input name	Digital inputs
Connection method	M12 connector
	2, 3, 4-wire

## Distributed I/O device - FLM DI 8 M12 - 2736288

### Technical data

#### Digital inputs

Number of inputs	8
Protective circuit	Reverse polarity protection
Filter time	3 ms
Input characteristic curve	IEC 61131-2 type 1
Input voltage	24 V DC
Input voltage range "0" signal	-30 V DC ... 5 V DC
Input voltage range "1" signal	13 V DC ... 30 V DC
Delay at signal change from 0 to 1	3.1 ms
Delay at signal change from 1 to 0	4.1 ms

#### Standards and Regulations

Test section	To I/O 500 V AC
Mechanical tests	Shock in acc. with EN 60068-2-27/IEC 60068-2-27 Load 30g, half sine wave, positive and negative per direction
	Vibration resistance in acc. with EN 60068-2-6/IEC 60068-2-6 5g in each space direction
Connection in acc. with standard	CUL
Protection class	III, IEC 61140, EN 61140, VDE 0140-1

### Classifications

#### eCl@ss

eCl@ss 4.0	27250302
eCl@ss 4.1	27250302
eCl@ss 5.0	27250302
eCl@ss 5.1	27242604
eCl@ss 6.0	27242604
eCl@ss 7.0	27242604
eCl@ss 8.0	27242604
eCl@ss 9.0	27242604

#### ETIM

ETIM 2.0	EC001430
ETIM 3.0	EC001599
ETIM 4.0	EC001599
ETIM 5.0	EC001599

#### UNSPSC

UNSPSC 6.01	43172015
-------------	----------

# Distributed I/O device - FLM DI 8 M12 - 2736288

## Classifications

### UNSPSC

UNSPSC 7.0901	43201404
UNSPSC 11	43172015
UNSPSC 12.01	43201404
UNSPSC 13.2	43201404

## Approvals

### Approvals

#### Approvals

UL Recognized / cUL Recognized / EAC / cULus Recognized

#### Ex Approvals

UL Recognized / cUL Recognized / cULus Recognized

#### Approvals submitted

### Approval details

UL Recognized 

cUL Recognized 

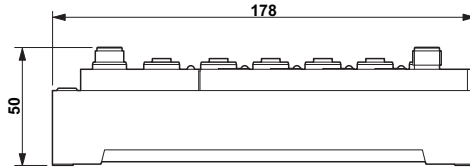
EAC

cULus Recognized 

## Drawings

# Distributed I/O device - FLM DI 8 M12 - 2736288

Dimensional drawing



Connection diagram

