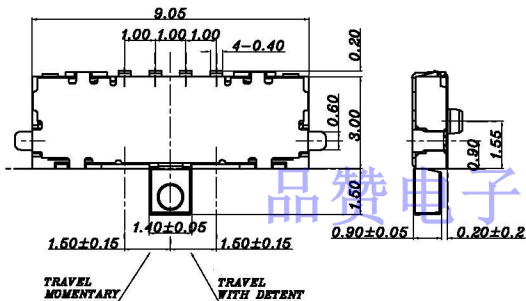
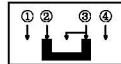
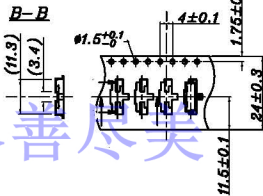


CIRCUIT DIAGRAM  
SEE DIRECTION



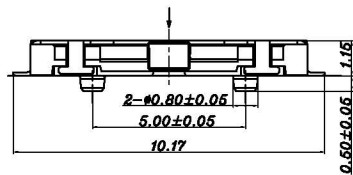
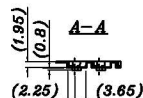
CARRIER TAPE



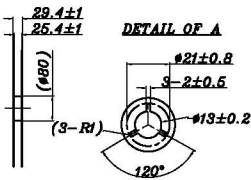
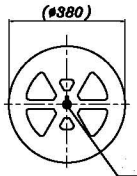
MK-14C03L-G015

侧拨形式  
品名系列编号

G015=1.5mm



REEL



COVER TAPE



G-Switch:  
使用温度范围: -20~70℃  
耐压: AC250V 50Hz 1min  
额定负荷: DC 12V 0.5A  
操作力: 200g±100gf  
接触电阻: ≤0.05Ω  
动作寿命: 10000次  
绝缘电阻: ≥100MΩ



**b-Switch**  
Unless otherwise specified, Tolerance:  
X. ±0.30  
X.x ±0.20  
X.xx ±0.15  
X.xxx ±0.10  
Angles ±0.5°

**G-Switch Electronic (HongKong) CO.,Ltd.**

DESIGN 陈伟帆	DATE 2016.05.29	TITLE: MK-14C03L-G015	
CHECKED	DATE		
APPROVED	DATE		
<a href="http://www.dg-switch.com">http://www.dg-switch.com</a>		REV.: X1	SCALE: 4:1
TEL:0769-82388879		UNIT: mm	
SIZE: A4	SHEET: 1/1		