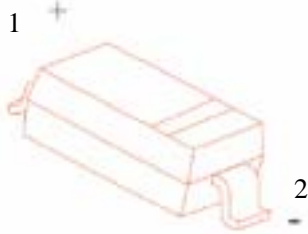


SOD-123

 MARKING: BAV19W: A8
 BAV20W: T2
 BAV21W: T3

特征 Features

- 开关速度小于 50nS; Fast Switching Device (TRR <50nS)
- 最大功率耗散 500mW; Power Dissipation of 500mW
- 高稳定性和可靠性。High Stability and High Reliability
- 反向漏电流小。Low reverse leakage

机械数据 Mechanical Data

- 封装: SOD-123 封装 SOD-123 Small Outline Plastic Package
- 极性: 色环端为负极 Polarity: Color band denotes cathode end
- 安装位置: 任意 Mounting Position: Any

极限值和温度特性(TA = 25 除非另有规定)

Maximum Ratings & Thermal Characteristics (Ratings at 25 ambient temperature unless otherwise specified.)

参数 Parameters	符号 Symbol	数值 Value			单位 Unit
		BAV19W	BAV20W	BAV21W	
反向电压 Reverse Voltage	VR	120	200	250	V
反向峰值电压 Peak Reverse Voltage	VRM	100	150	250	V
功率消耗 Power Dissipation	Pd	500			mW
工作结温 Operating junction temperature	Tj	150			
存储温度 Storage temperature range	Ts	-65-+150			
反向工作电压 Working Inverse Voltage	WIV	75			V
平均整流电流 Average Rectified Current	IO	200			mA
正向(不重复)电流 Non-repetitive Peak Forward Current	IFM	400			mA
正向(不重复)浪涌电流 Peak Forward Surge Current	IFSM	2.5			A

@tp=1ms; TA=25

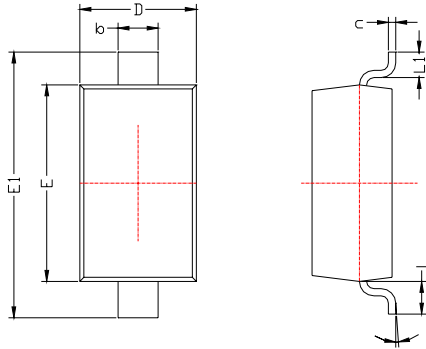
Valid provided that electrodes are kept at ambient temperature.

电特性 Electrical Characteristics (Ratings at 25 ambient temperature unless otherwise specified).

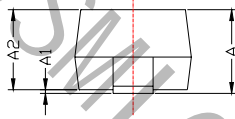
符号 Symbols	参数 Parameter	测试条件 Test Condition	界限 Limits		单位 Unit
			Min	Max	
VRB	反向击穿电压 Reverse Voltage	IB=100uA BAV19W	120	---	V
		BAV20W	200		
		BAV21W	250		
IR	反向漏电流 Reverse Leakage Current	VR=100V BAV19W	---	0.1	uA
		VR=150V BAV20W			
		VR=200V BAV21W			
VF	正向电压 Forward Voltage	IF=100mA	---	1.00	V
		IF=200mA	---	1.25	
TRR	反向恢复时间 Reverse Recovery Time	IF= 30mA, IR=30mA RL=100Ω IRR=3mA	---	50	nS
C	结电容 Capacitance	VR=0V, f=1MHZ	---	5	pF

SOD-123 PACKAGE OUTLINE

Plastic surface mounted package

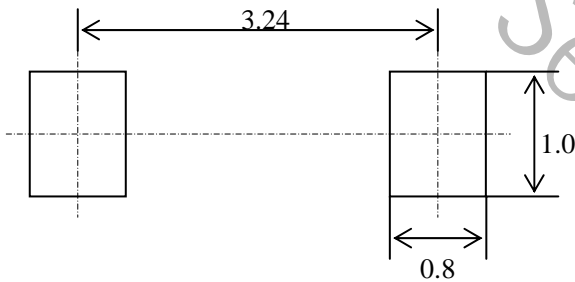


SYMBOL	DIMENSIONS	
	MIN.	MAX.
A	1.050	1.250
A1	0.000	0.100
A2	1.050	1.150
b	0.450	0.650
c	0.080	0.150
D	1.500	1.700
E	2.600	2.800
E1	3.550	3.850
L	0.500REF	
L1	0.250	0.450
	0°	8°


焊盘设计参考

Precautions: PCB Design

Recommended land dimensions for SOD-123 diode. Electrode patterns for PCBs


 技术要求:
 1, 塑封体尺寸: 2.70 X 1.60
 2: 未注公差为: ± 0.05
 3, 所有单位: mm