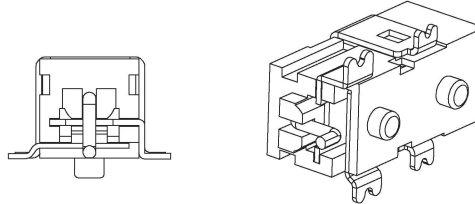
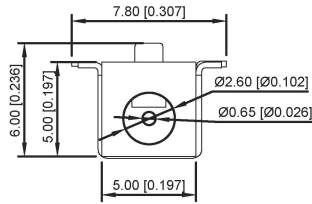
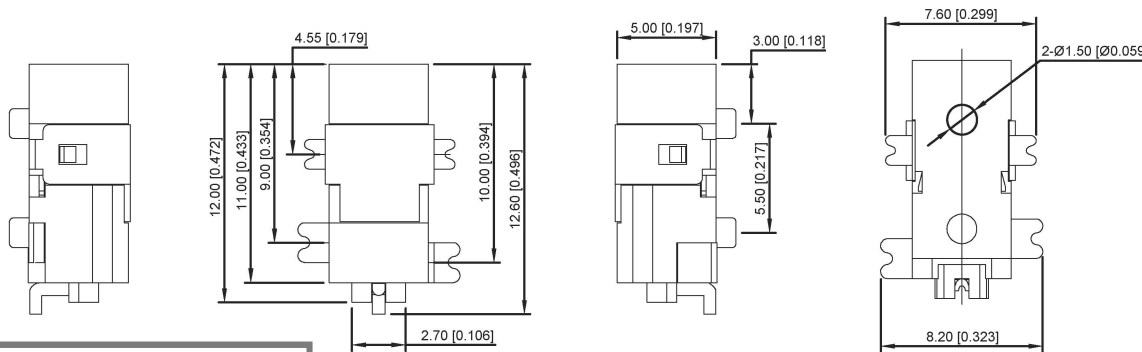


Main technical performance

| | |
|-----------------------|------------------|
| Voltage rating | DC 30V/0.5A |
| Contact resistance | ≤0.03Ω |
| Insulation resistance | ≥100MΩ |
| Withstanding voltage | AC500V(50Hz)/min |
| Insertion force | 3-20N |
| Temperature range | -30-70℃ |
| Life | 5000次 |



| | |
|------------|-------------|
| SCHEMATIC | |
| Model | DC-011C-SMT |
| Center Pin | Ø0.65 mm |



| | MATERIAL | PLATING |
|------------|-----------------|---------|
| center pin | Brass | tin |
| terminal 1 | Brass | ni |
| terminal 2 | Brass | tin |
| terminal 3 | Brass | ag |
| terminal 4 | Phosphor Bronze | ag |
| plastic | PPA | |

广东星坤科技股份有限公司

| | |
|------|-----|
| 生 | 日期 |
| 發 | 日期 |
| ΔX | |
| MARK | |
| 文件 | 工程章 |

| REVISIONS | DATE | REVISED | APPROVED | UNSPECIFIED TOLERANCES |
|-------------|------|---------|----------|------------------------|
| ANGLAR | | | | ±5° |
| L ≤ 4 | | | | ±0.2 |
| 4 < L ≤ 16 | | | | ±0.3 |
| 16 < L ≤ 63 | | | | ±0.4 |
| L > 63 | | | | ±0.5 |

| | | |
|------|------|-------------|
| DSND | DATE | SCALE: N/A |
| DWN | DATE | VIEW: |
| CHKD | DATE | UNIT: mm/in |
| APPD | DATE | SIZE: A4 |

| | | |
|-------------|---------------|----------|
| MODEL TYPE: | DC POWER JACK | |
| PART NO.: | | |
| DWG NO.: | DC-011C-SMT | |
| WEIGHT | SHEET | REVISION |
| 1.0g | 1/1 | A0 |

KKB INDUSTRIAL PRECISION CO., LIMITED