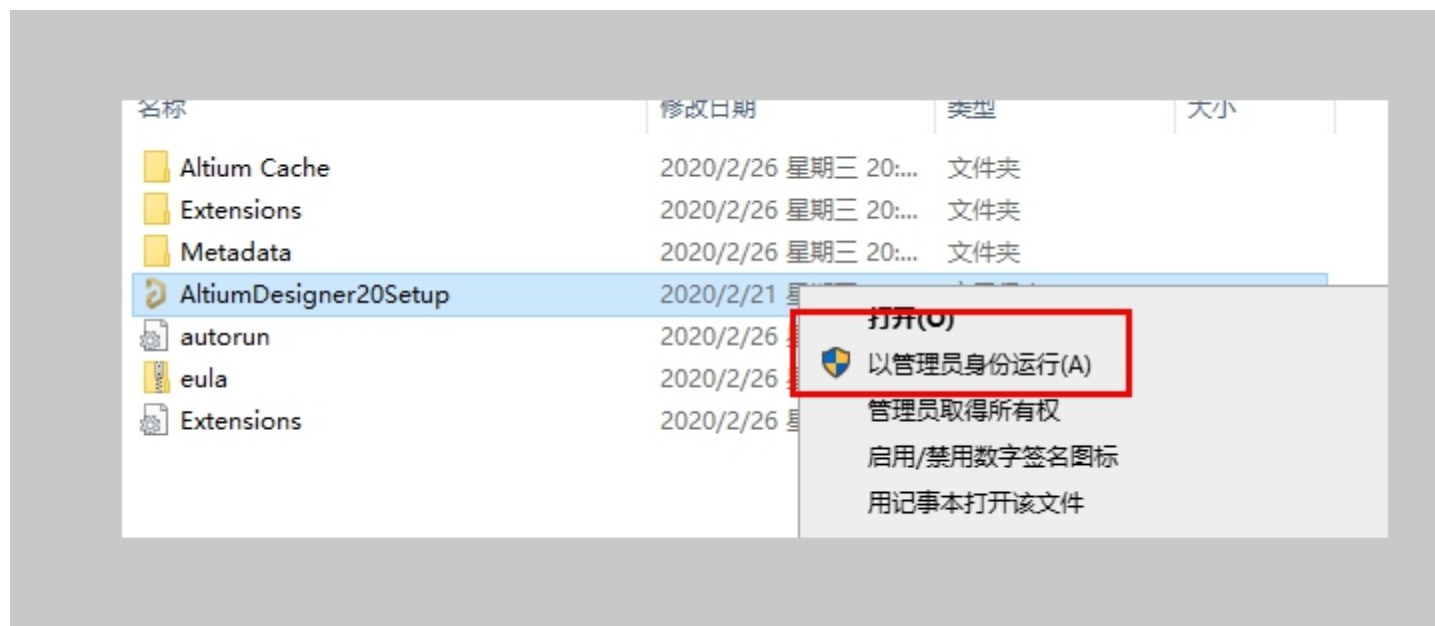


AD软件安装教程

ad09-24版本

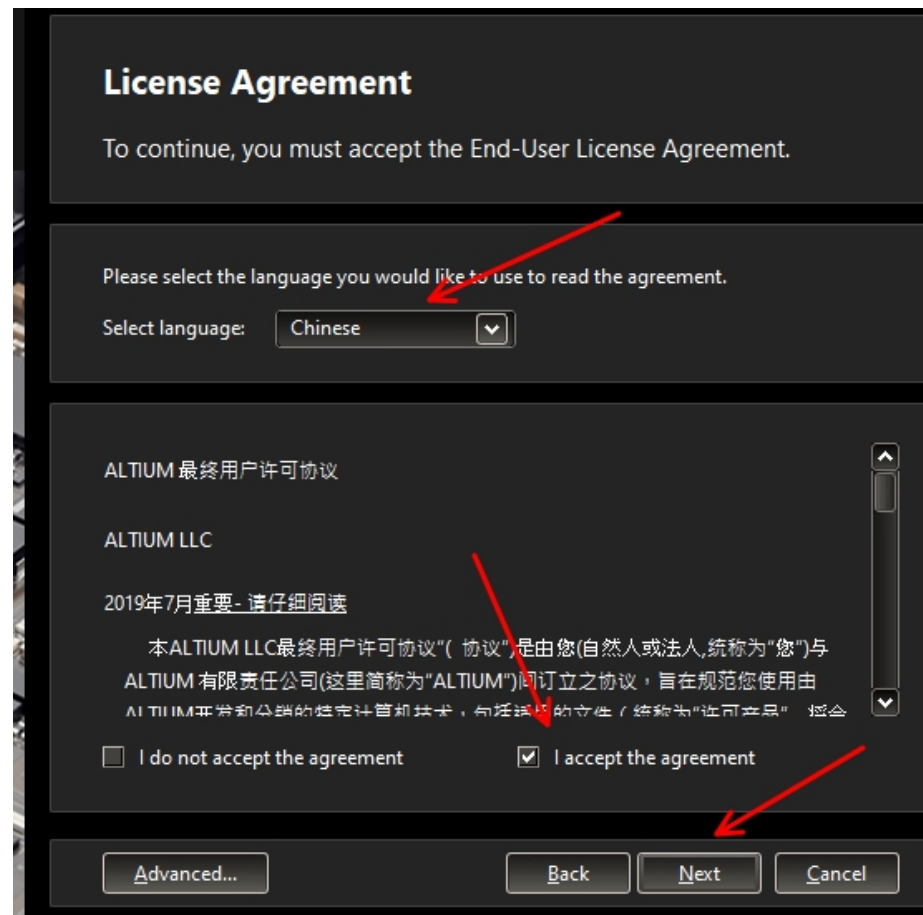
1.解压后右键以管理员身份运行主程序setup



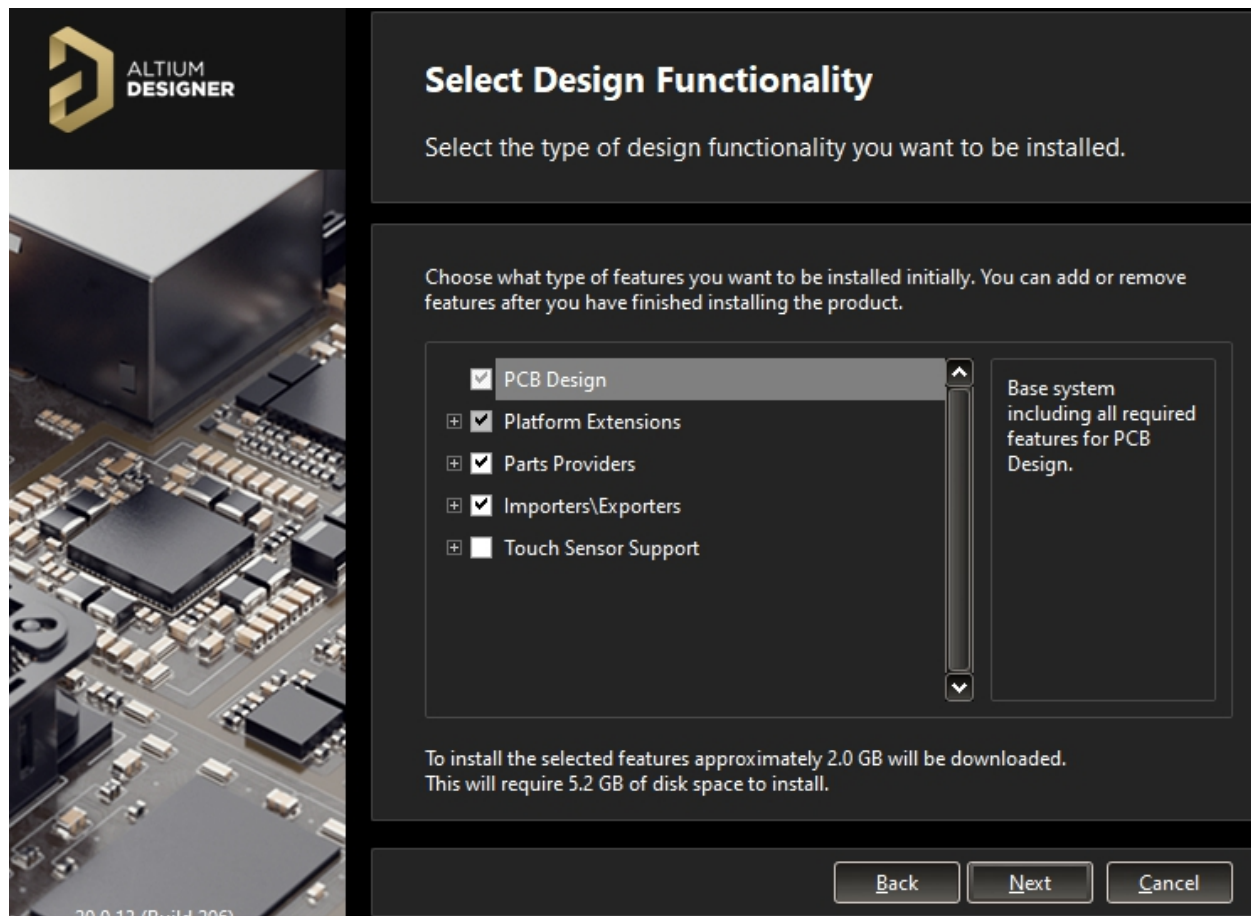
2. 点击下一步



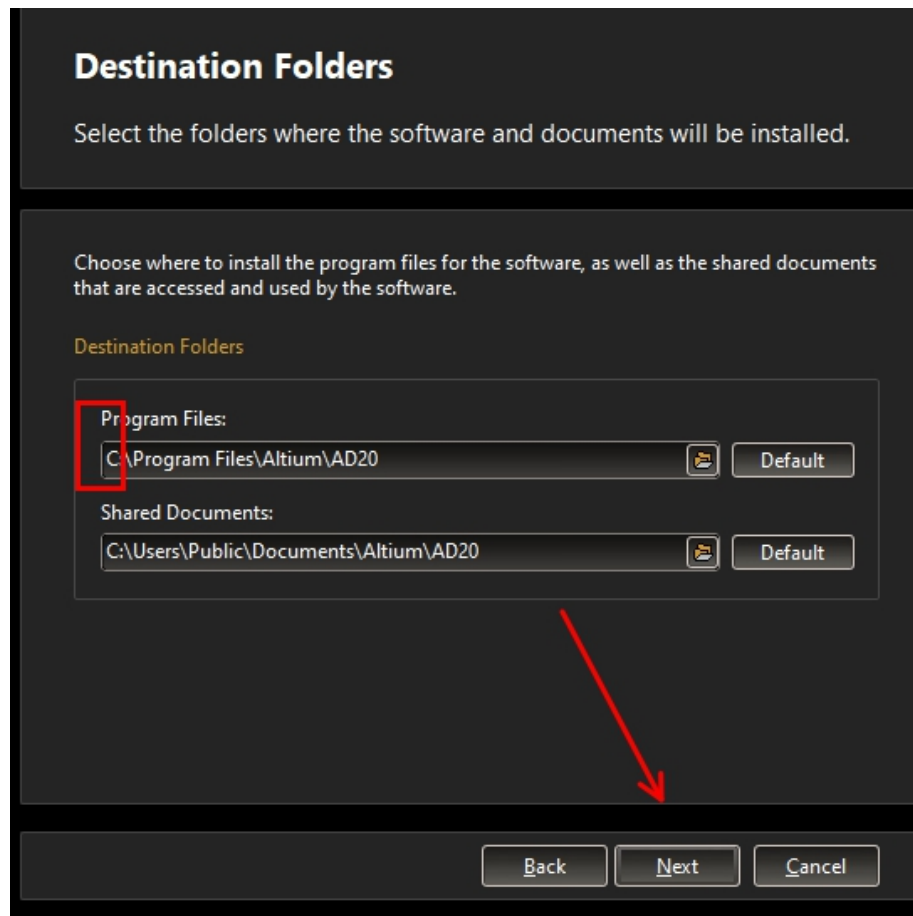
3.选择【Chinese】，勾选【I accept the agreement】，点击【Next】



4. 点击next



5. 点击【文件夹图标】可更改安装位置（可以在D盘或其它磁盘下新建一个“AD20”文件夹。注：这里只做演示不更改了），点击【Next】。



6. 点击next

Customer Experience Improvement Program

Would you like to participate in the Program?

The Altium Customer Experience Improvement Program ("Program") is designed to enhance our understanding of how our customers utilize Altium products and services. This information enables us to further develop and create products and services that better meet your needs and improve your overall experience with Altium.

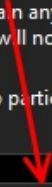
As an Altium customer, you have an option to share information with us regarding how you use our desktop and cloud products ("usage information").

We analyze such usage information to help measure product performance and quality, optimize current features, and make product development decisions. This information is associated with your AltiumLive user profile and it can be used to personalize and improve your application and website experience, as well as to communicate with you.

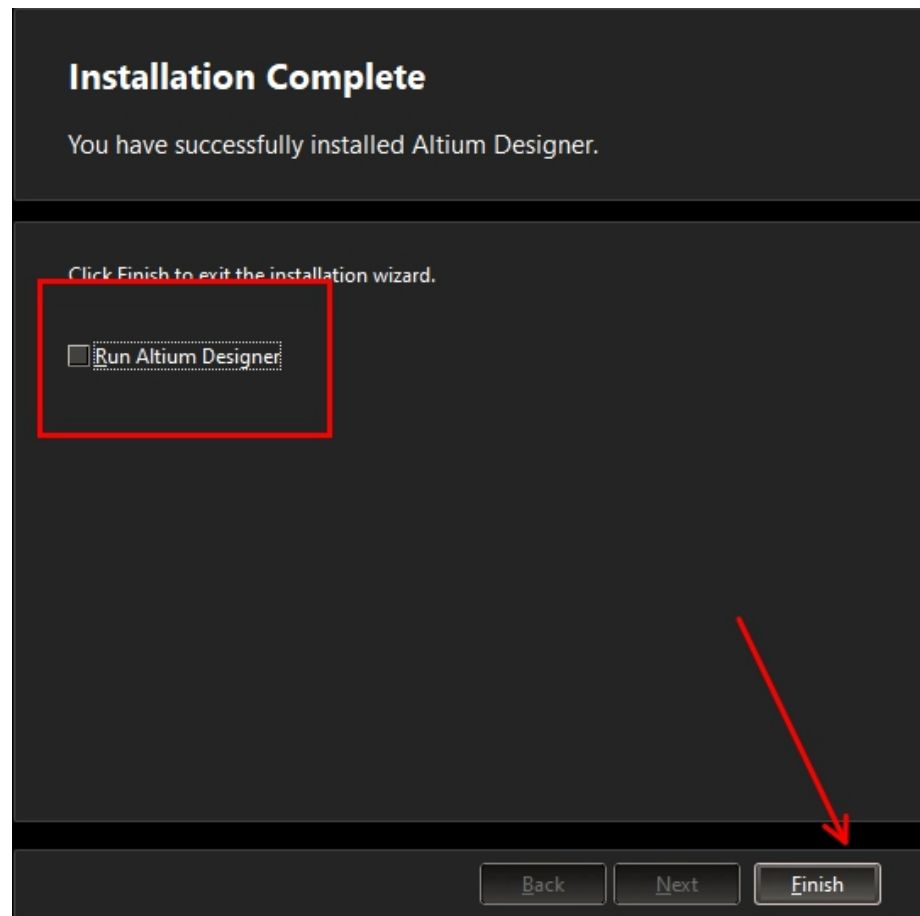
How is my privacy protected?

The data we collect cannot be used to recreate your work or your products and designs. The data is transmitted via a secure connection, it does not contain any information that can identify you or your company to any third party, and it will not be meaningful

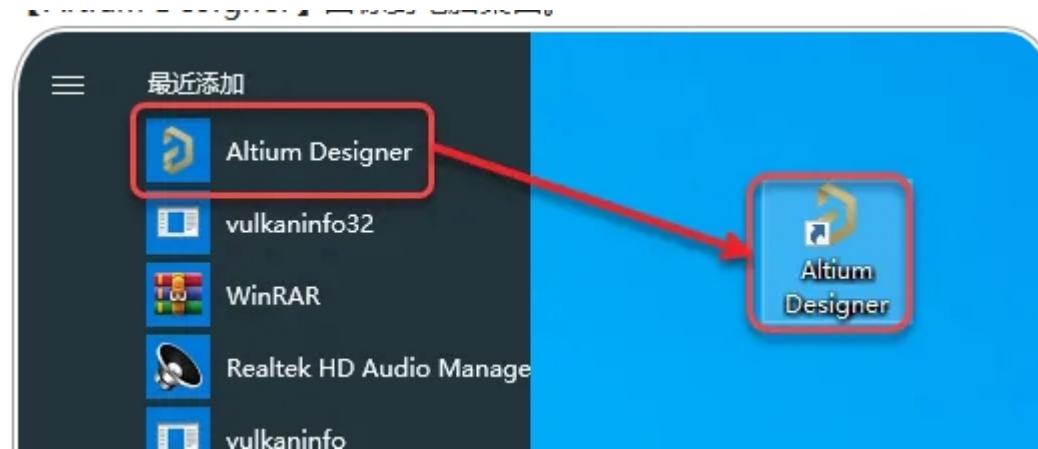
Don't participate Yes, I want to participate



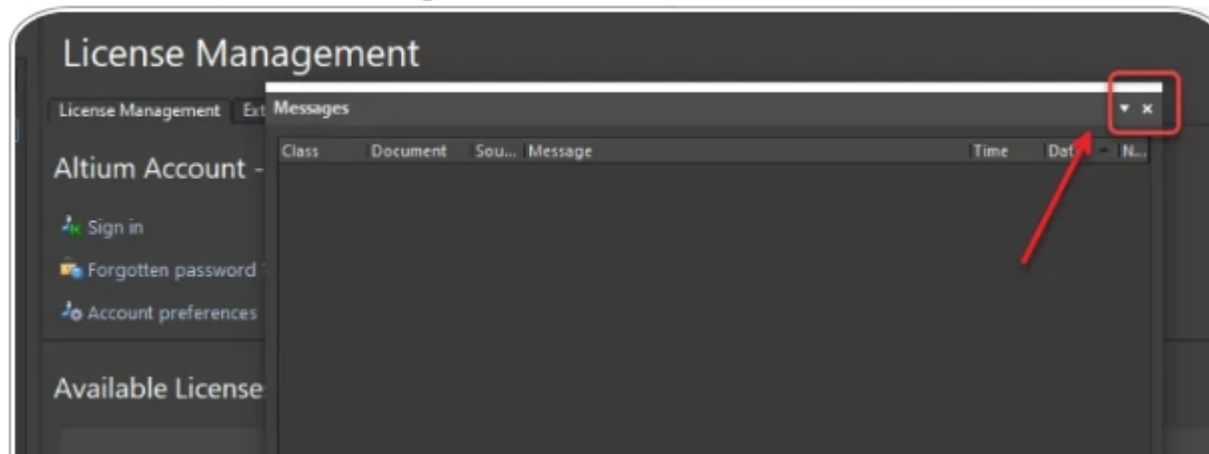
7.取消勾选【Run Altium Designer】， 点击【Finish】



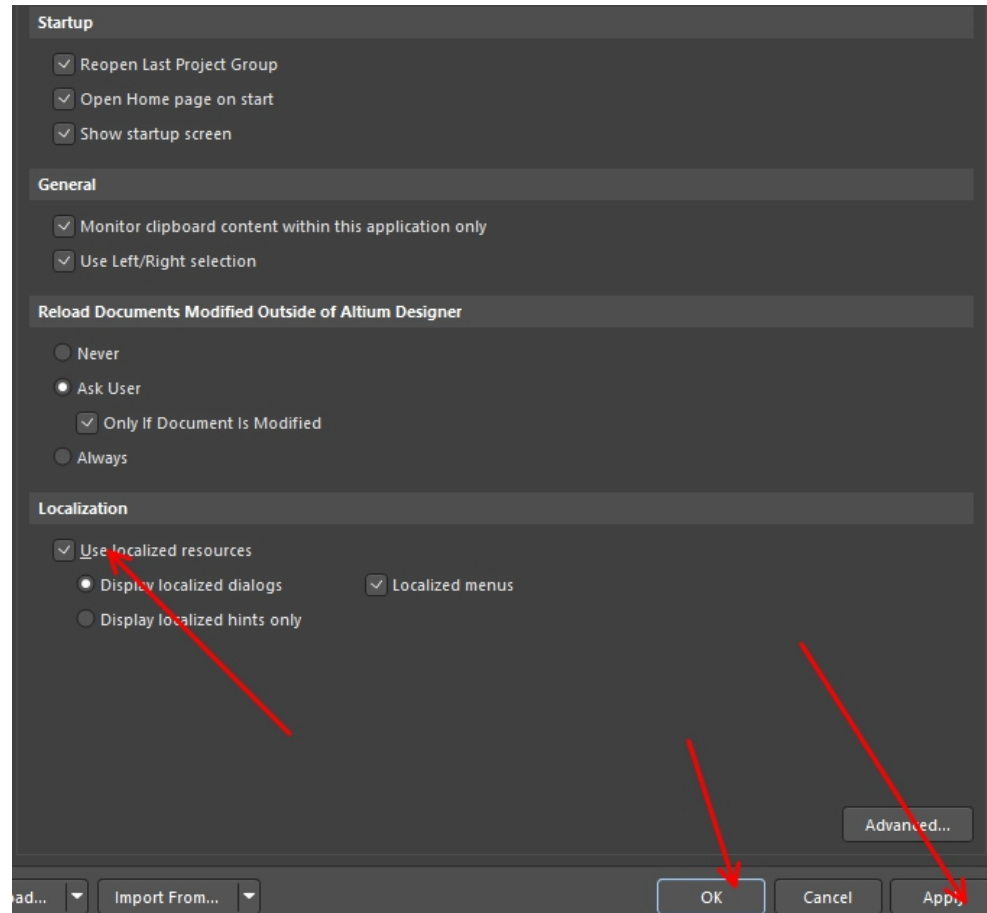
8.创建桌面启动快捷方式：点击桌面左下角【开始】图标，点击【所有应用】
→找到并拖动【Altium Designer】图标到电脑桌面



9. 双击桌面快捷方式打开软件如下



10.勾选【use localized resources】， 点击【OK】



11. 双击桌面【Altium Designer】图标重新启动软件，至此软件安装成功

